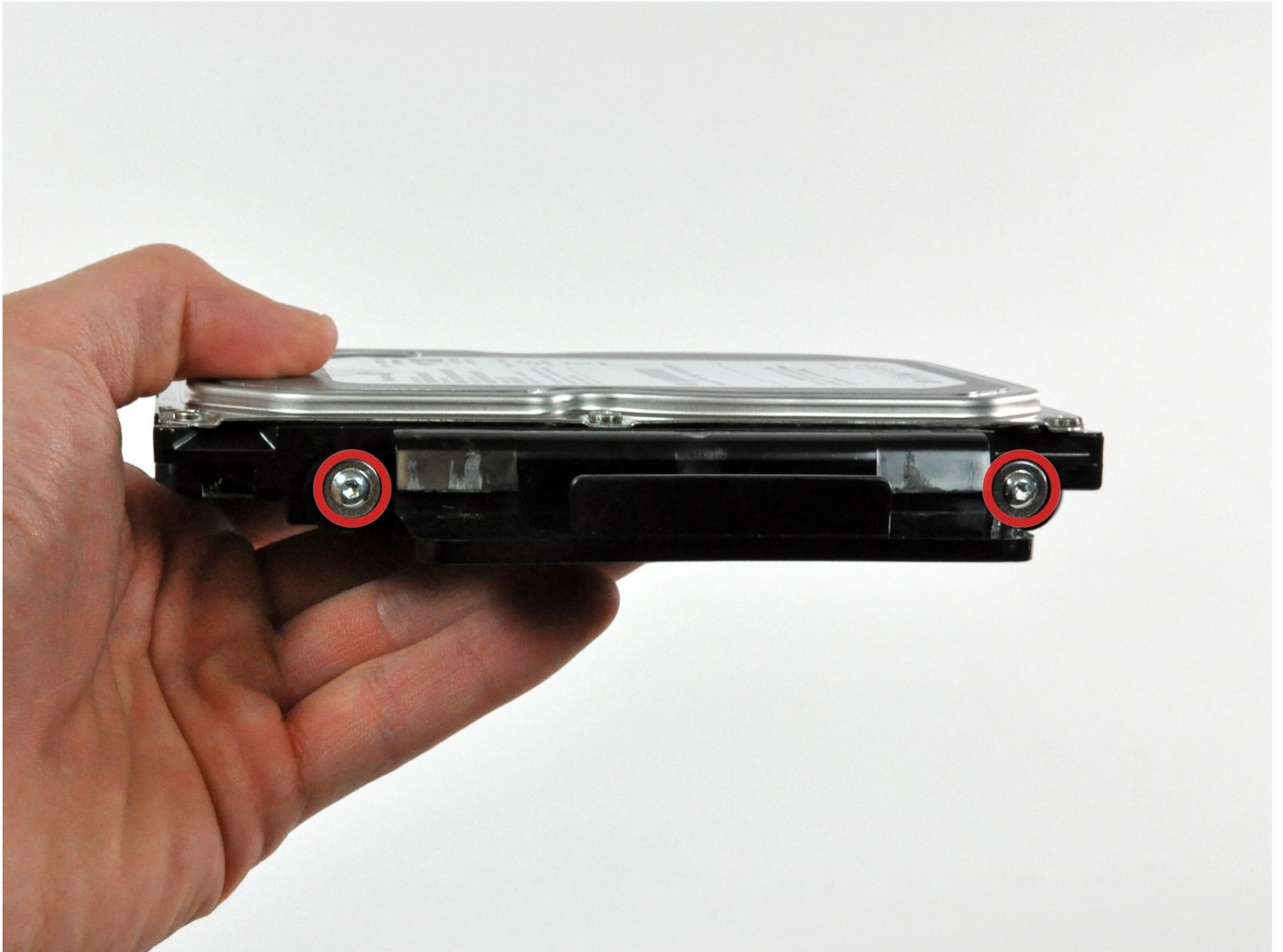




# iMac Intel 17" Hard Drive Replacement

Upgrade your hard drive to gain more storage...

Written By: Walter Galan



# INTRODUCTION

Upgrade your hard drive to gain more storage space!

## TOOLS:

Phillips #1 Screwdriver (1)  
Plastic Cards (1)  
Spudger (1)  
TR10 Torx Security Screwdriver (1)  
T6 Torx Screwdriver (1)  
TR8 Torx Security Screwdriver (1)

## PARTS:

iMac Intel 17", 20", and 24" 2006 SSD Upgrade Kit (1)  
2 TB SATA Desktop Hard Drive (1)  
1 TB 7200 RPM 3.5" Hard Drive (1)  
3 TB SATA Desktop Hard Drive (1)  
Universal Drive Adapter (1)  
4 TB 3.5" Hard Drive (1)  
2 TB SSD Hybrid 3.5" Hard Drive (1)  
1 TB SSD Hybrid 3.5" Hard Drive (1)  
4 TB SSD Hybrid 3.5" Hard Drive (1)  
iFixit 2.5" to 3.5" SSD/HDD Adapter (1)

## Step 1 — Access Door



- Loosen the two captive Phillips screws securing the access door to the iMac.
- Remove the access door from the iMac.

 **Before beginning the repair, unplug the computer and press and hold the power switch for 20-30 seconds, to discharge internal capacitors.**

## Step 2 — Front Bezel



- Remove the following four screws:
  - Three 6 mm T8 Torx.
  - One 8 mm T8 Torx.

### Step 3



- Flip your iMac over and lay it stand-side down on a flat surface.
- To lift the front bezel off the iMac, simultaneously:
  - Use your thumbs to press in the RAM arms and hold the iMac down.
  - Use your index fingers to pull the small bridge of material on the front bezel toward yourself.
  - Pull the Front bezel up with your index fingers.
- Once the small bridge of material has cleared the RAM arms, lift the front bezel by its lower edge just enough to clear the bottom edge of the rear case.

## Step 4



- ① Re-orient your iMac so it sits upright on the stand.
- Insert a [plastic card](#) up into the corner of the air vent slot near the top of the rear case.
- Push the card toward the top of the iMac to release the front bezel latch.
- Pull the front bezel away from the rear case.
- Repeat this process for the other side of the front bezel.
- ① It may be necessary to apply several layers of duct tape to the top of the access card to aid in releasing the latches.
- If the bezel refuses to release, try pressing the lower edge back onto the rear case and repeat this opening process.

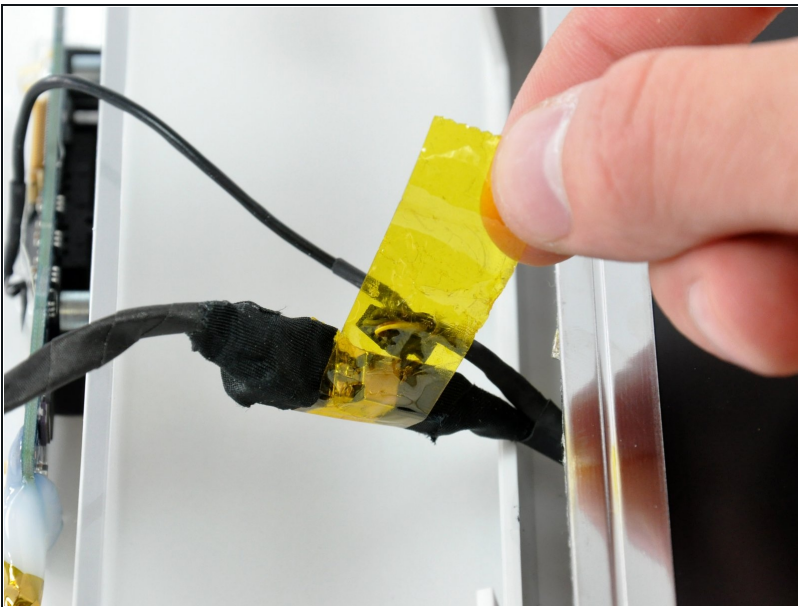


## Step 5



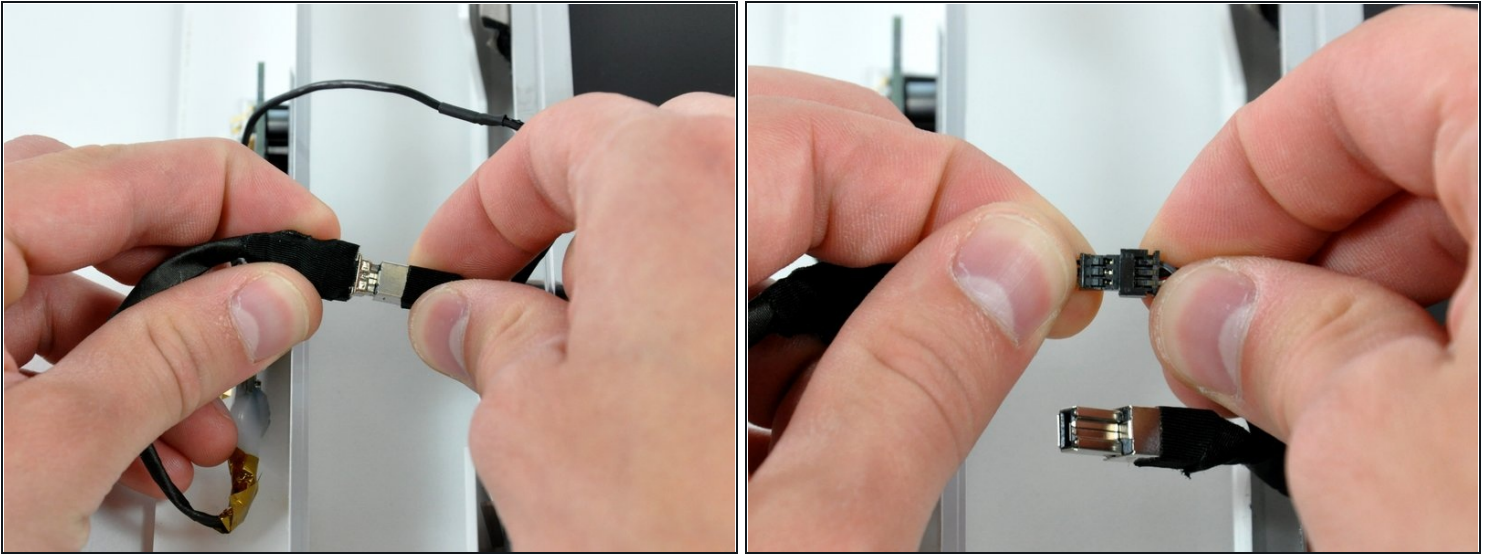
- Lay your iMac stand-side down on a table.
- Lift the front bezel from its lower edge and rotate it away from the rest of your iMac, minding the RAM arms that may get caught.
- Lay the front bezel above the rest of the iMac.

## Step 6



- If necessary, remove the piece of kapton tape(it is ok to toss this) wrapped around the microphone and camera cables.

## Step 7



- Disconnect both the camera and microphone cables.

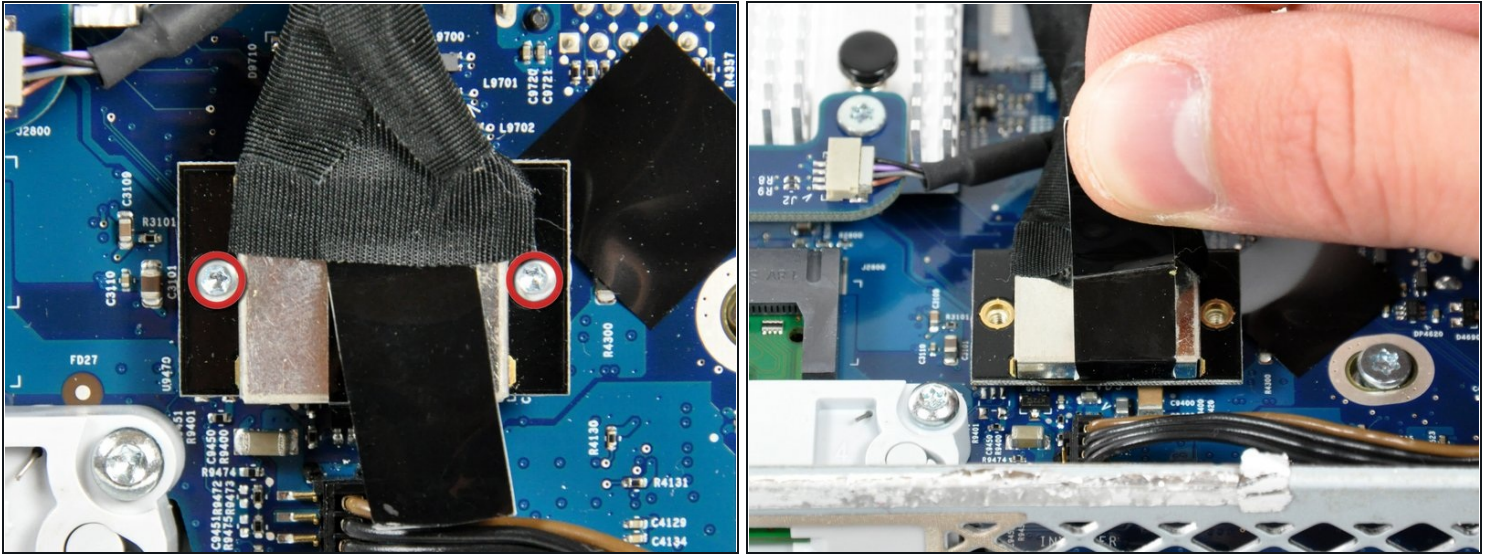
## Step 8 — Display



- Peel up the lower EMI shield from the rear case.
- ① It is only necessary to peel the shield up from three sides. Leave it attached to the display.
- ① We have found it helpful to tape the EMI shield against the display to keep it out of the way.

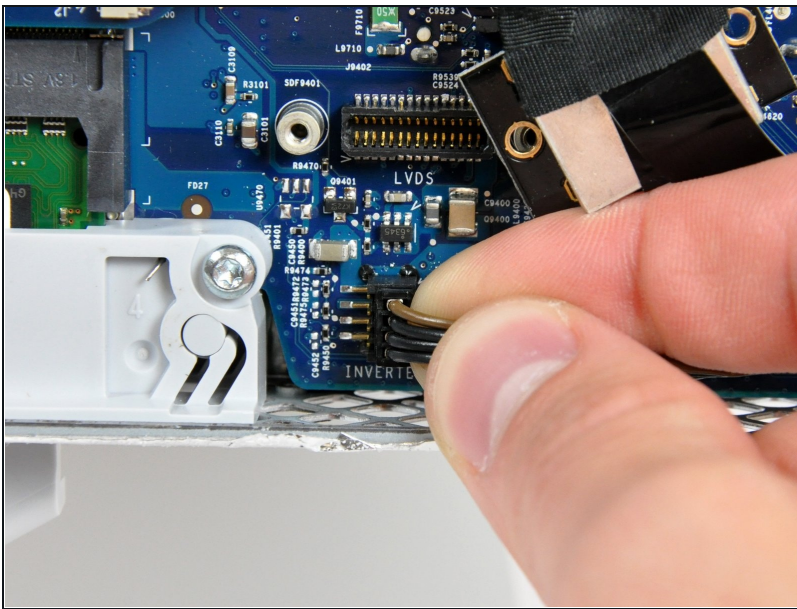


## Step 9



- Remove the two 4.8 mm T6 Torx screws securing the display data cable to the logic board.
- Grab the display data cable connector by its black tab and pull it straight up off the logic board.

## Step 10



- Inverter cable on 24inch iMac pulls off to the left.
- Pull the inverter cable connector straight up off its socket on the logic board.



## Step 11



- Peel back the aluminum EMI tape from the two vertical edges of the display.
- ★ During reassembly, it is helpful to use several small strips of tape to hold the EMI shielding along the left and right edges of the display footprint out of the way before lowering the display into the rear case of your iMac.

## Step 12



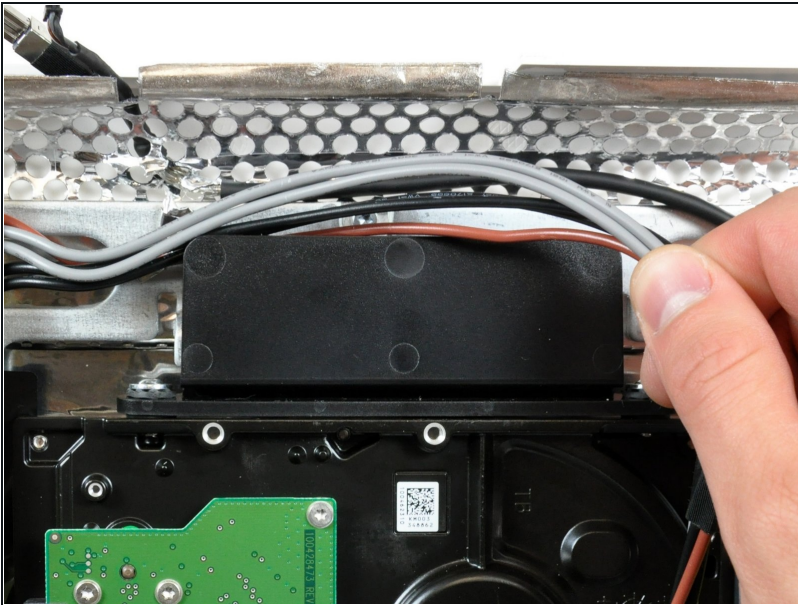
- ☑ Allow the EMI shield to hang down from the display.
- Remove the four 8 mm with 2 mm thick head coarse-thread T10 Torx screws securing the display to the rear case.
- ⓘ These screws are recessed, so a thin screwdriver such as [this](#) is essential for removal. Bit drivers tend to be too short for this application.
- ⓘ It is strongly recommended to use a magnetized screwdriver so the screws won't fall into the iMac.

## Step 13



- Lift the display from its lower edge and pull it toward yourself to peel off the EMI shield attached to its top edge.
- ⓘ Be mindful of any cables that may get caught during removal.

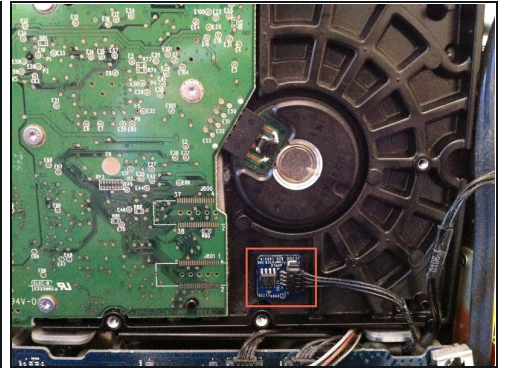
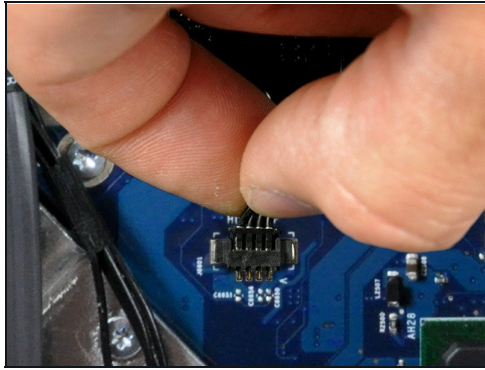
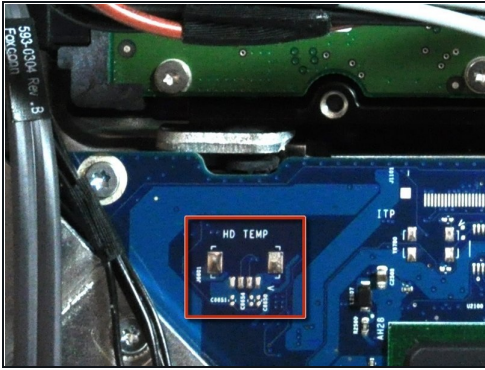
## Step 14 — Hard Drive



- De-route the bundle of power supply cables from behind the hard drive bracket.

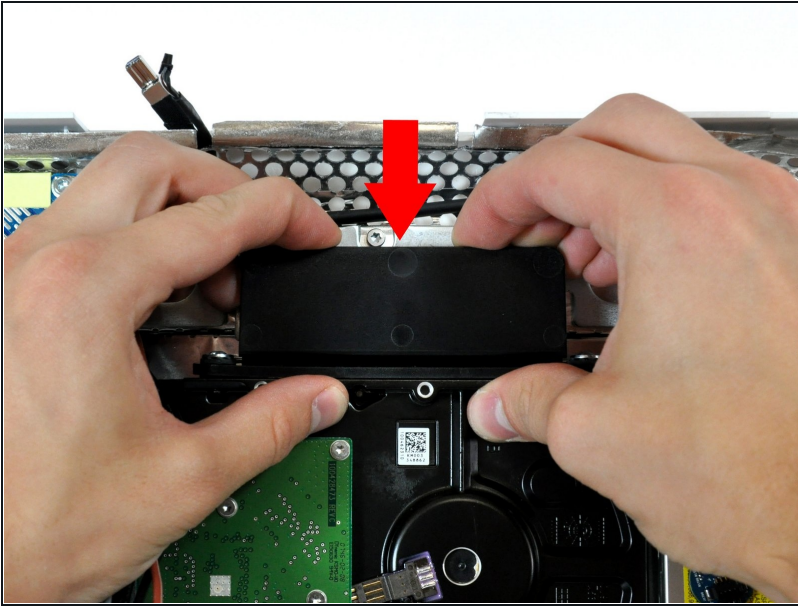


## Step 15



- ⚠ A hard drive thermal sensor may be present on some models. If your logic board is missing the hard drive thermal sensor socket highlighted in red in the first picture, skip this step.
- Pull the hard drive thermal sensor connector away from its socket on the logic board.
  - ⓘ Pull this connector parallel to the face of the logic board toward the top edge of the iMac.
  - 🔧 Use a spudger to pry the thermal sensor and adhesive off the hard drive and install it in the same location on the replacement drive.

## Step 16



- Press the hard drive bracket down to free it from the rear case, then rotate the top of the drive toward yourself.

⚠ Pressing the top of the hard drive bracket down to release it from the rear case requires a substantial amount of force, so we recommend laying your iMac stand-side down on a table to avoid knocking it over.

- ⓘ If you have trouble releasing the hard drive bracket, it can be removed from the hard drive, by removing the two T8 or T10 Torx screws securing the bracket to the drive.

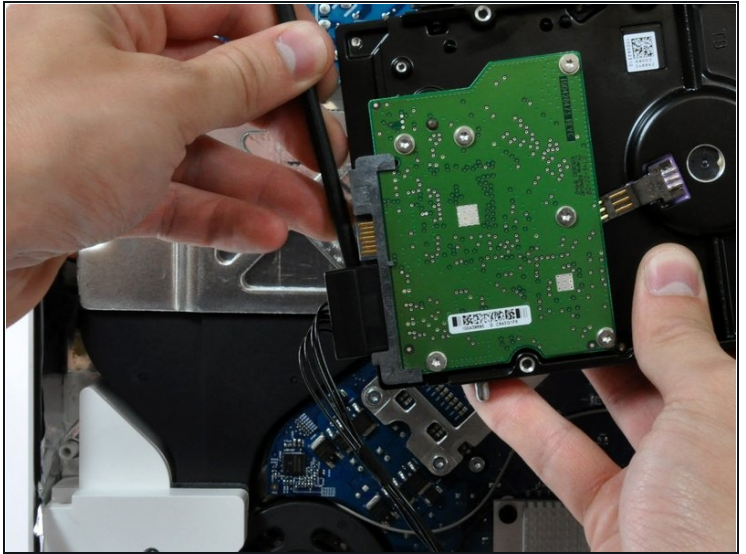
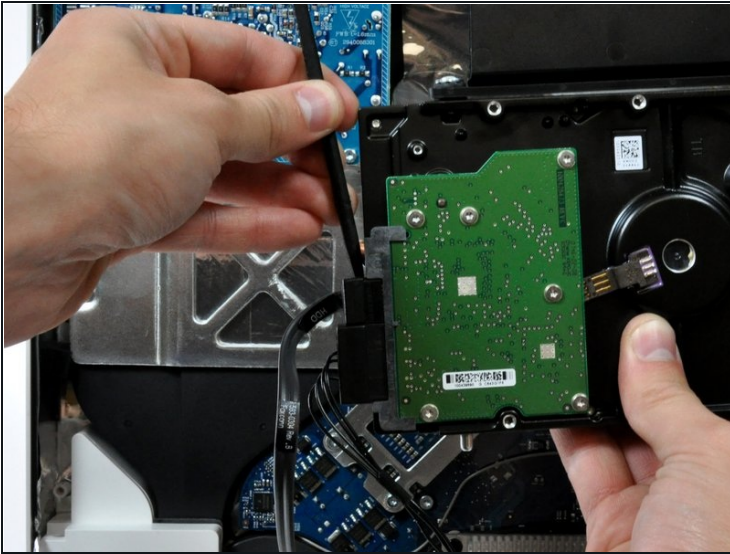
## Step 17



- Lift the hard drive off its lower pins and pull it out of the rear case, minding the power supply cables that may get caught.
- ☑ When reinstalling your hard drive, be careful not to push the two rubber grommets through their holes in the chassis. Retrieving them would require removing the logic board.

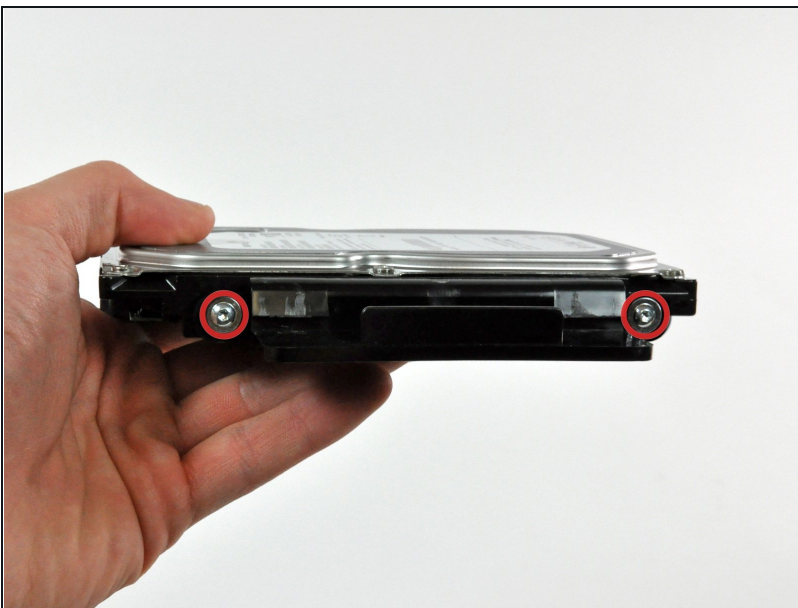


## Step 18



- Insert a spudger between the SATA connectors and twist it to separate the connector from the hard drive.
- Disconnect both SATA connectors.

## Step 19 — Hard Drive



- Remove the two T8 Torx screws securing the hard drive bracket to the hard drive.
- ☑ Lift the bracket off your old hard drive and transfer to it to your new drive.

## Step 20



- Remove the two T8 Torx hard drive pin on the other side of the drive.

★ The pins attach to the connector side of the hard drive.

⚠ If a thermal sensor is present on your hard drive, use the flat end of a spudger to pry it off and transfer it to your new hard drive.

ⓘ If you are installing a new hard drive, we have an [OS X install guide](#) to get you up and running.

---

To reassemble your device, follow these instructions in reverse order.