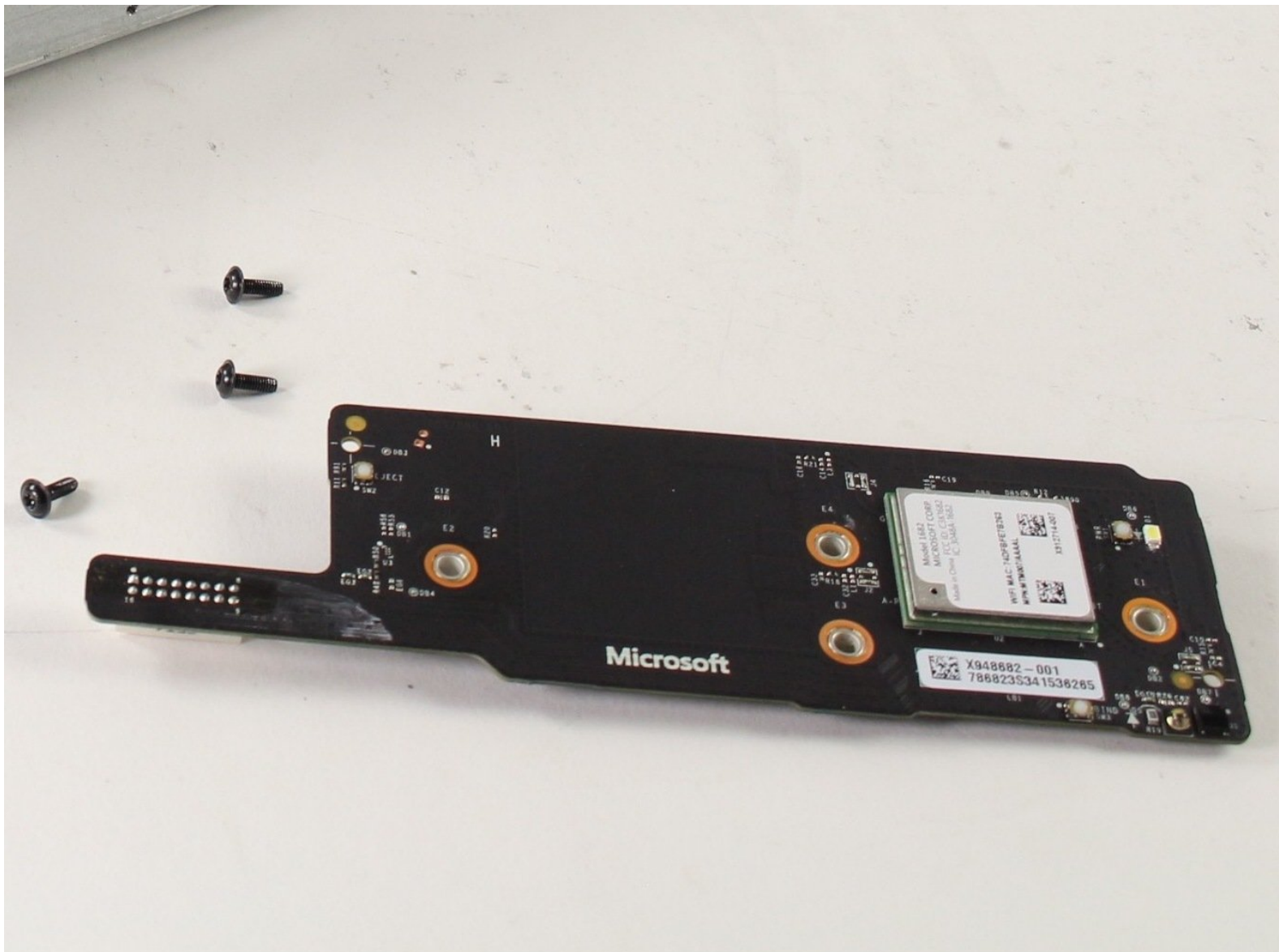




# Xbox One S IR Blaster and Wireless Controller Replacement

This is the wireless connection for the Xbox...

Written By: Christopher Chen



## INTRODUCTION

This is the wireless connection for the Xbox controllers and Headsets with the Xbox Series One S. You'll notice it has a Wifi mac address. Headsets and controllers disconnecting is a symptom of this card having issues. It's possible removing the card, cleaning the contacts, and reseating will return the card to normal behavior before ordering a replacement.

If your Xbox One S is not picking up motion signals when playing certain games follow this guide to replace your IR blaster. Make sure to check that you are within line of sight of the front of the Xbox One S and there is no barrier between the user and the device.



### TOOLS:

- [iFixit Opening Tool](#) (1)
- [TR10 Torx Security Screwdriver](#) (1)
- [TR8 Torx Security Screwdriver](#) (1)



### PARTS:

- [Xbox One S Top Case](#) (1)
- [Xbox One S Bottom Panel](#) (1)
- [Xbox One S Chassis and Rear Panel](#) (1)
- [Xbox One S IR Blaster](#) (1)

## Step 1 — Case



- Flip the Xbox One S so that the bottom of the case is facing upward.

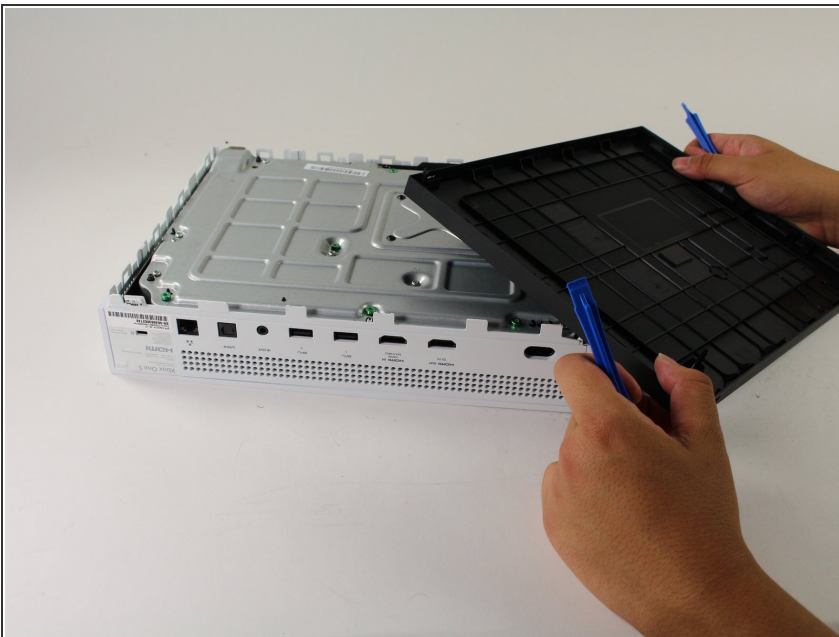
## Step 2



- Begin by working at the case on the rear where the warranty sticker is located. Insert the plastic opening tool into the gap between the bottom of the case and the grated top side. Then find the clips in between that hold the case in place. Use the opening tool to pop the clips out. The best method is to pry the black case away from the bottom.

- Use the opening tool to pop the clips out. The best method is to pry the black case away from the bottom.
- ⓘ You will hear clicking sounds when you are prying the case open. It may be fairly difficult to remove the bottom.
- ⚠ It's possible that the clips may break when you remove the bottom from the case.
- ⓘ We recommend starting at the back where the warranty sticker is located. Pry along the rear edge until all clips are free. From there do each side. When three sides are free start at the end of the front opposite the sync button. Be cautious and take your time and all should separate without any damage.

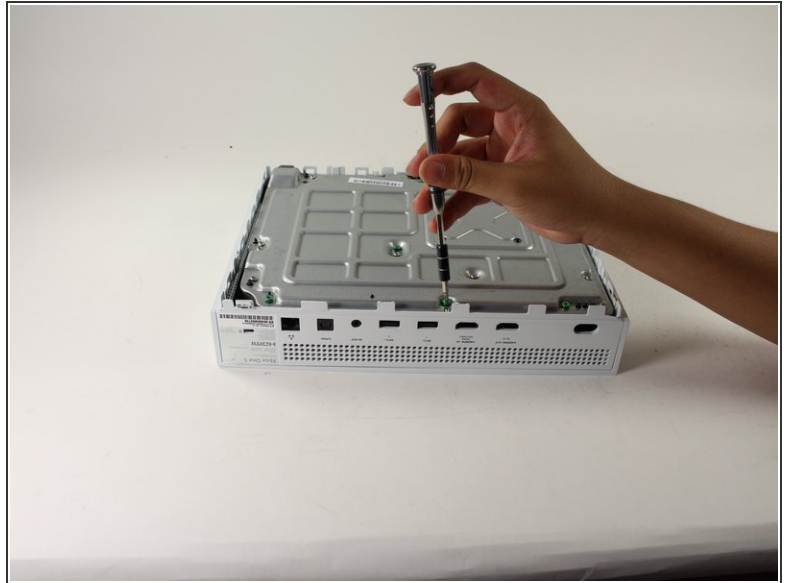
### Step 3



- Once all of the clips are opened, remove the bottom part of the case.

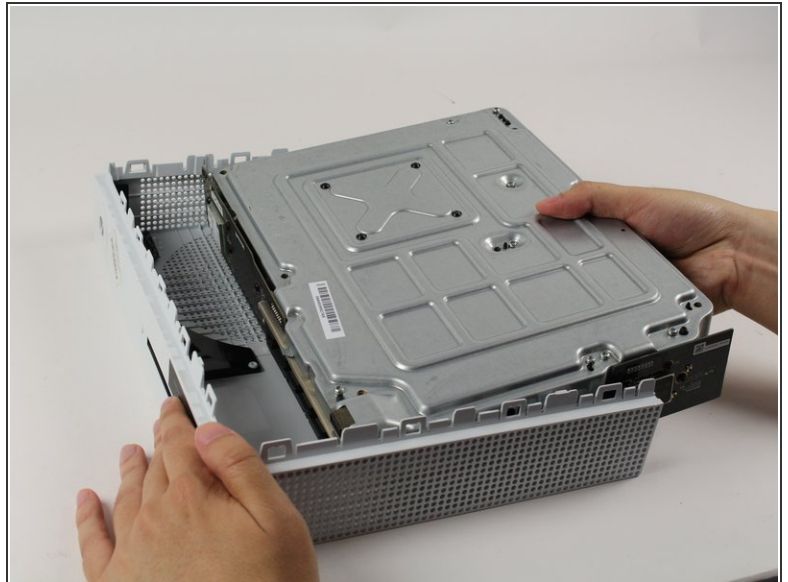
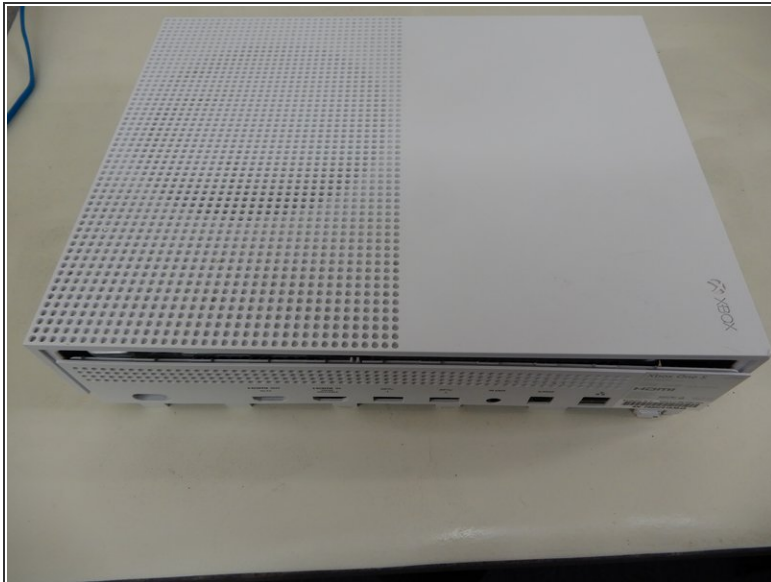


## Step 4



- Use a T10 Torx screwdriver to remove the six green 50 mm long screws from the metal case labeled F1 through F6.

## Step 5



- Gently separate the interior case from the white exterior case using the appropriate method.
- Pry the white plastic sides outwards at the rear to separate from the plastic I/O shield

## Step 6 — IR Blaster and Controller Wireless Connection



- i** The IR blaster can be identified on one of the sides of the interior case. It will be next to the disc drive and near the fan.

## Step 7



- Use a Torx T8 screwdriver to remove the four 15 mm screws with orange circles around them.
- Gently pull the IR blaster off the case.

To reassemble your device, follow these instructions in reverse order.