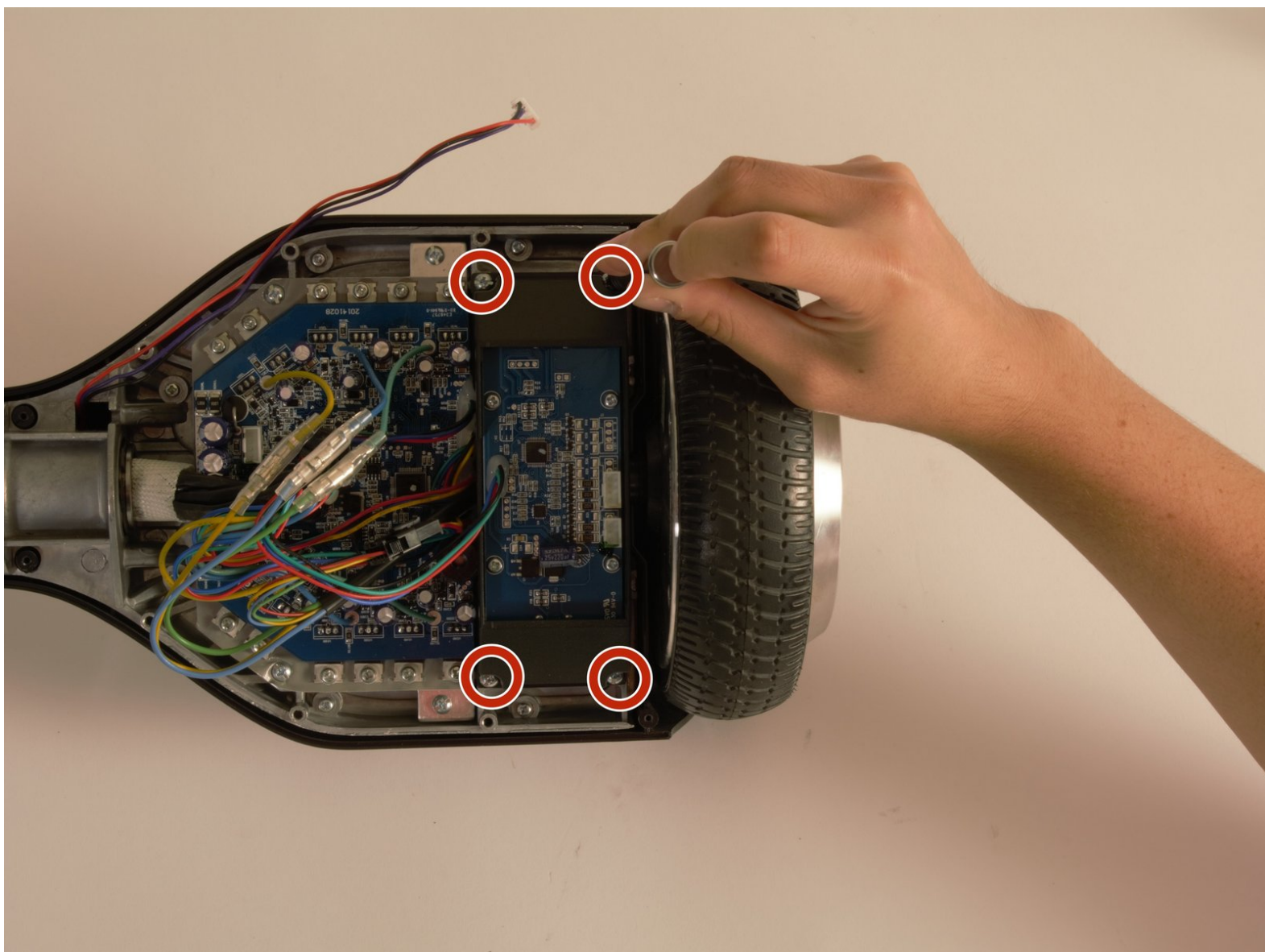




# SwagTron T1 Wheel Replacement

Replacing the wheel of the SwagTron T1.

Written By: Teagan Allen



## INTRODUCTION

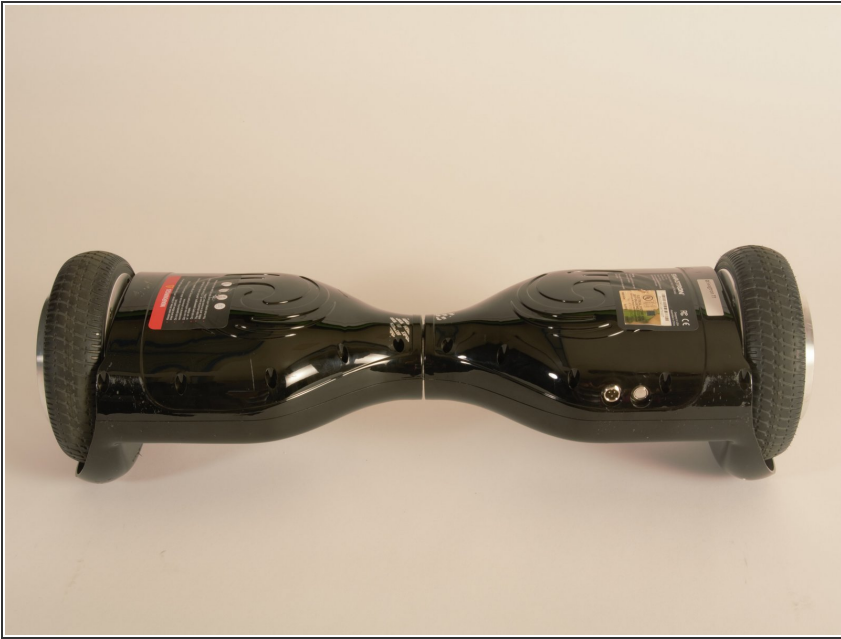
This guide will outline how to replace the wheel of the SwagTron T1 hoverboard. This may be necessary for any critical damage done to the hoverboard's wheel.

---

### TOOLS:

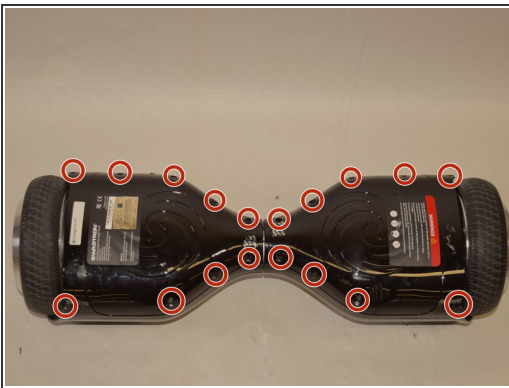
- [Phillips #2 Screwdriver](#) (1)
  - [Allen Wrench](#) (1)
-

## Step 1 — Back Panels



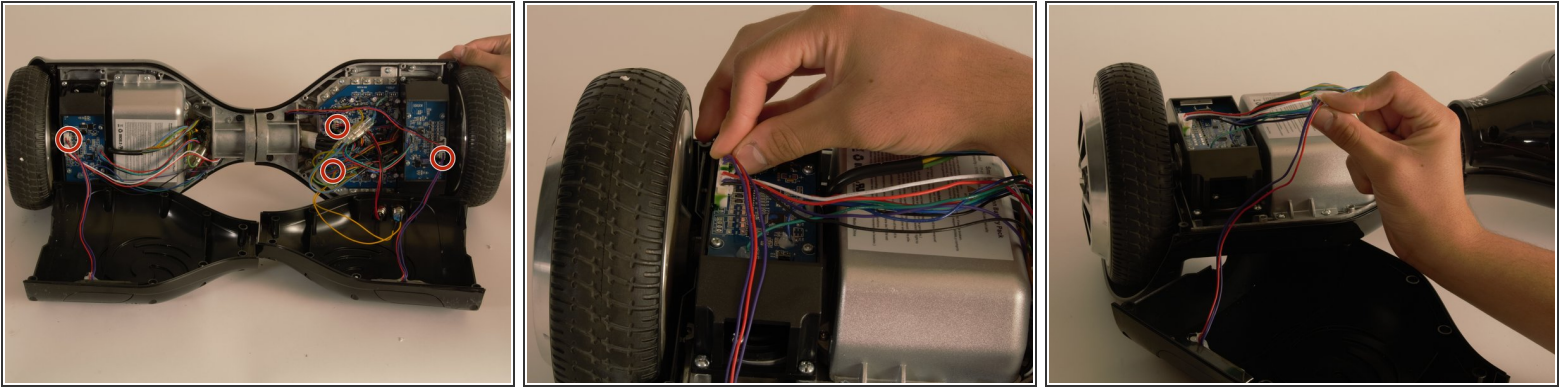
- ⚠ Ensure that the SwagTron is off.
- Turn the SwagTron upside down to see the underside.

## Step 2



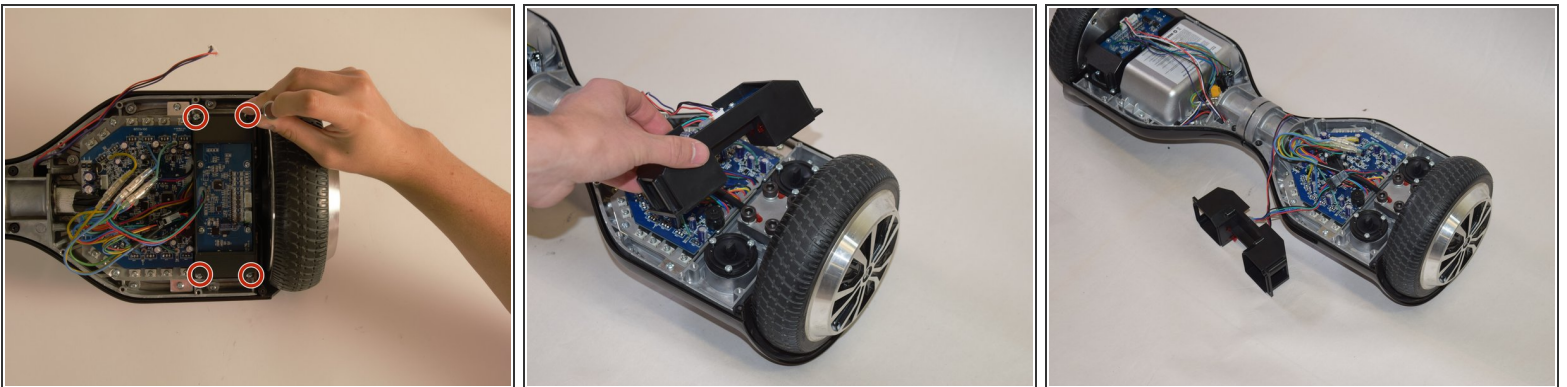
- Unscrew the eighteen 10mm screws that secure the back panels using a Phillips #2 screwdriver.
- ⓘ The screws are tightly in place. It will take effort to screw them out.
- ⚠ The panel is still attached to the SwagTron by wires that go to the motherboard.
- Carefully lift the panels off

## Step 3



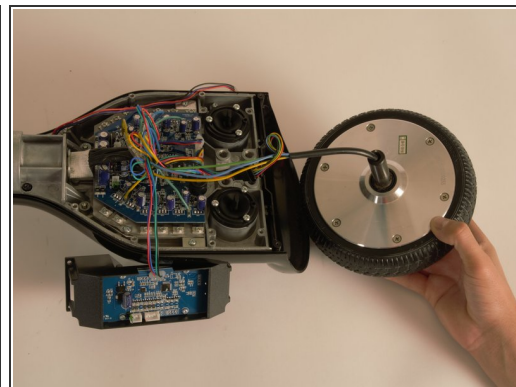
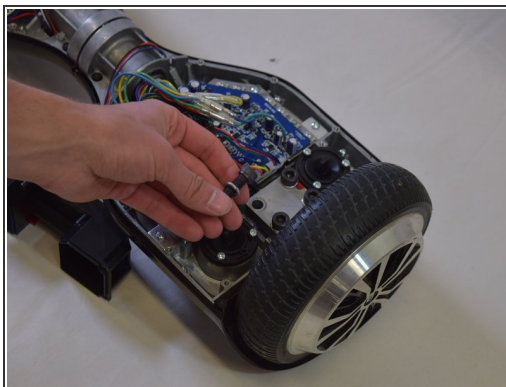
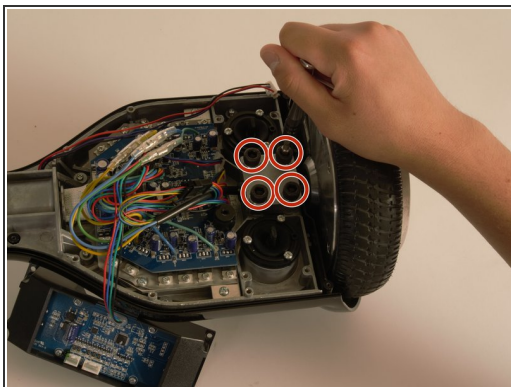
- Follow the wires from the panels to the motherboard.
  - You may need to cut any zip ties that are holding the wires together.
  - There is one connection on the battery side and three on the other side that must be removed.
- ⚠ These connections may be difficult to remove. Try to securely press the connection and pull firmly.
- Your back panels are now completely removed.

## Step 4 — Wheel



- Using your Phillips #2 screwdriver, remove the four 1cm screws that attach the gyroscope and its black case to the hoverboard.
- Carefully remove this component and set it off to the side.

## Step 5

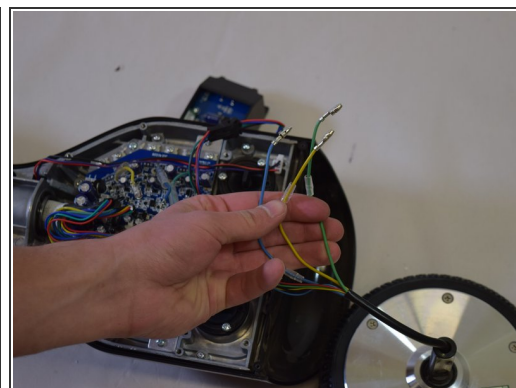
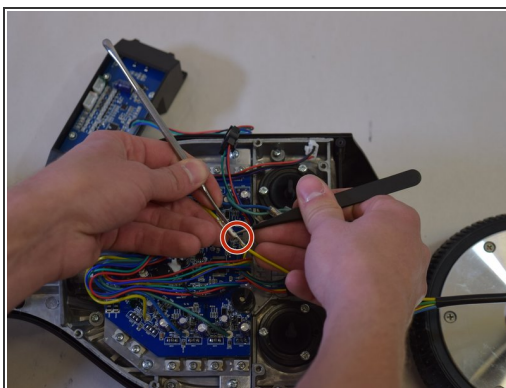
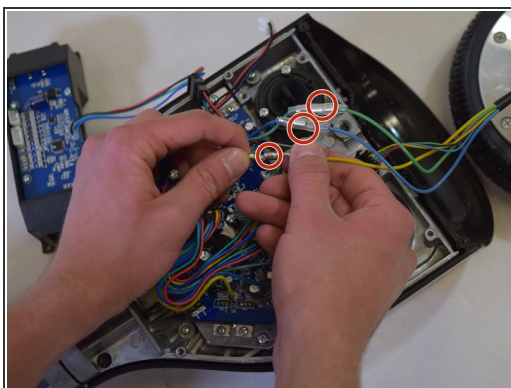


- Using your H 6.0 allen wrench, remove the four 20mm black bolts shown in the picture.
- Take off the iron plate holding the wheel in place.
- Remove the Motor/Wheel and set it aside close by to the hoverboard.

⚠ The wires from the Motor/Wheel should still be connected to the motherboard.

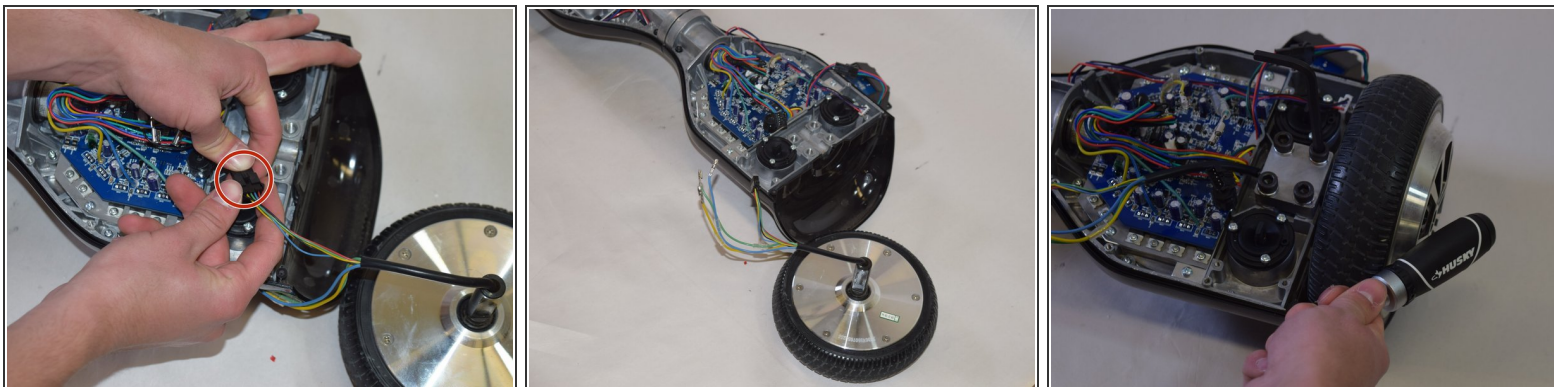
⚠ These bolts are very tight, it may be difficult to remove them. Try using a tool with a long handle.

## Step 6



- Slide the protective plastic off the connectors on the marked wires (green, blue, and yellow) using your hands or a set of tweezers.
- ⓘ The connectors on the wires of your hoverboard may be different from those shown in the pictures on the left due to differences in manufacturing.
- Separate the set of marked green, blue, and yellow wires from their connectors.

## Step 7



- Finally separate the last connector shown on the left.
- Your wheel is completely removed; slide in a new Motor/Wheel into the slot and follow the previous steps in reverse order.
- ⓘ Make sure the replacement wheel is snug. Neither rubbing on the outer rim nor on the side of the hoverboard.

To reassemble your device, follow these instructions in reverse order.