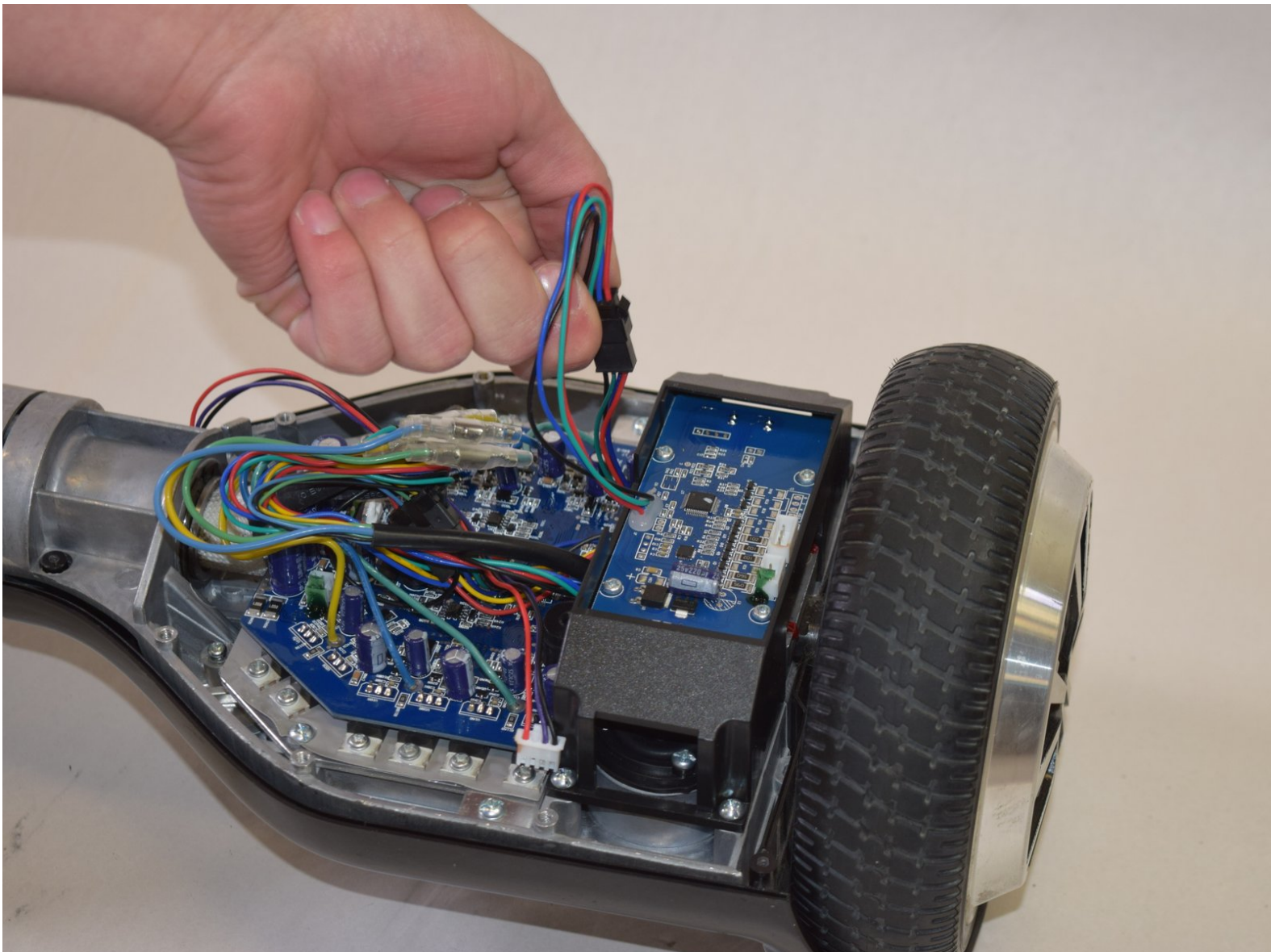




# SwagTron T1 Gyroscope Replacement

A guide on how to replace the gyroscope component of the SwagTron T1.

Written By: Teagan Allen



---

## INTRODUCTION

This guide will show you how to replace the gyroscope component of your SwagTron T1. This may be necessary if the self-balancing function of your hoverboard is not working correctly. **Before attempting this replacement, recalibrate your SwagTron.** If the problem persists, continue with this replacement. This replacement can be done for the gyroscope component on either side of your SwagTron T1.



### TOOLS:

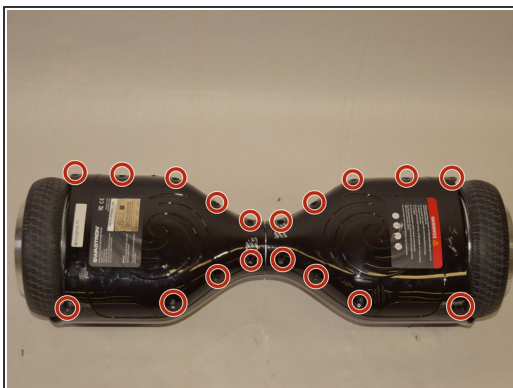
- [Phillips #2 Screwdriver](#) (1)
-

## Step 1 — Back Panels



- ⚠ Ensure that the SwagTron is off.
- Turn the SwagTron upside down to see the underside.

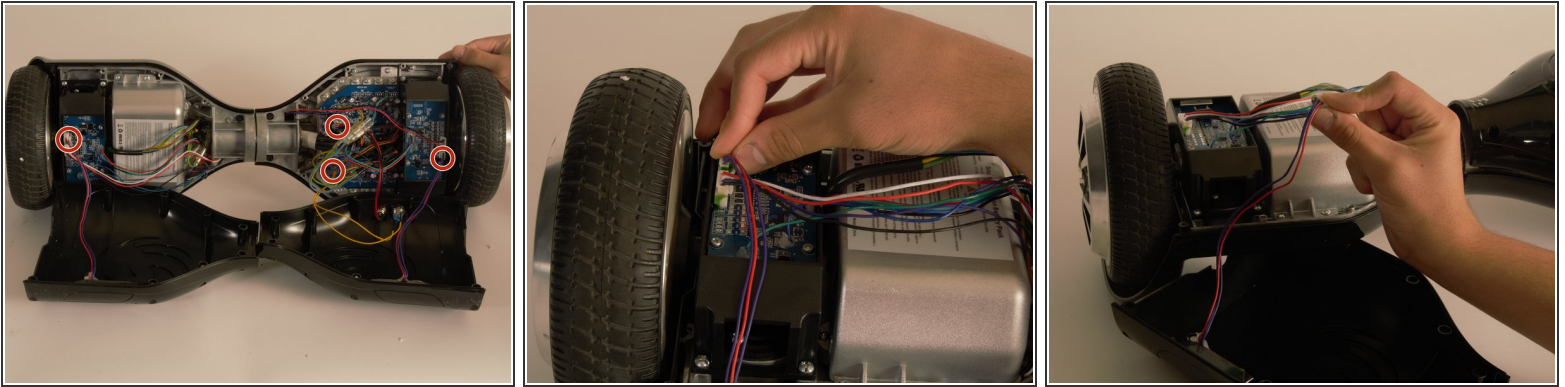
## Step 2



- Unscrew the eighteen 10mm screws that secure the back panels using a Phillips #2 screwdriver.
- ⓘ The screws are tightly in place. It will take effort to screw them out.
- ⚠ The panel is still attached to the SwagTron by wires that go to the motherboard.
- Carefully lift the panels off

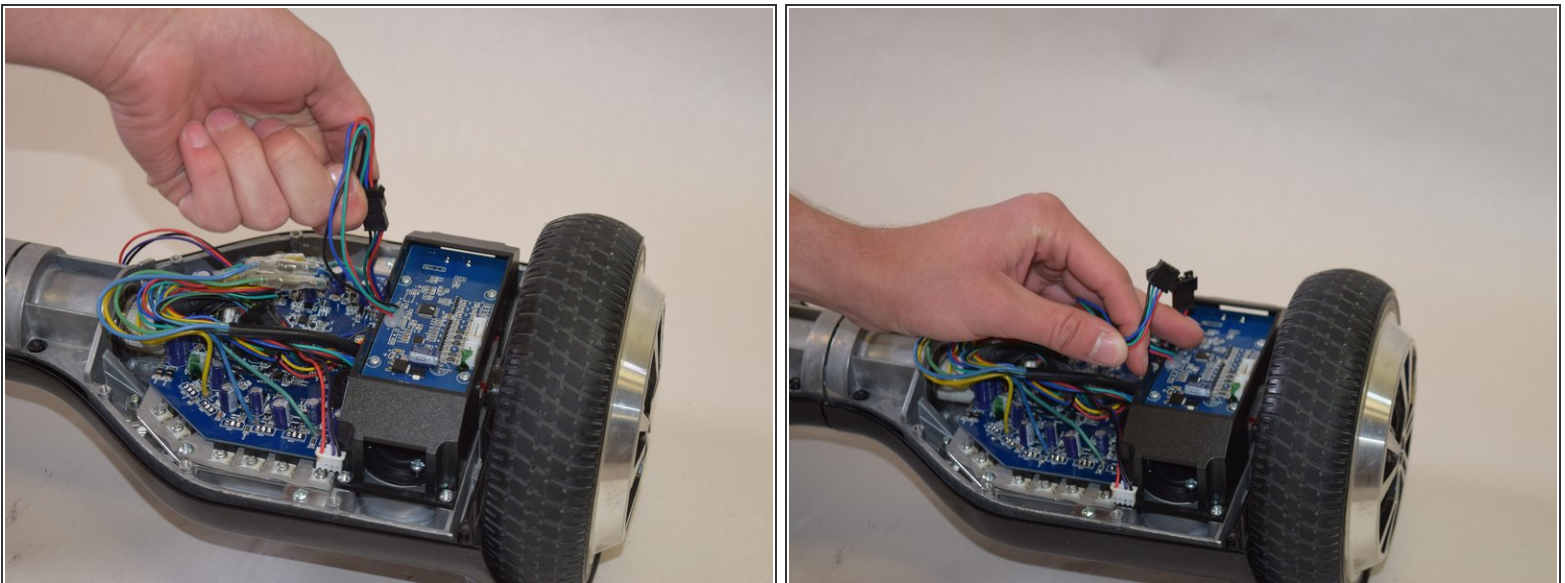


### Step 3



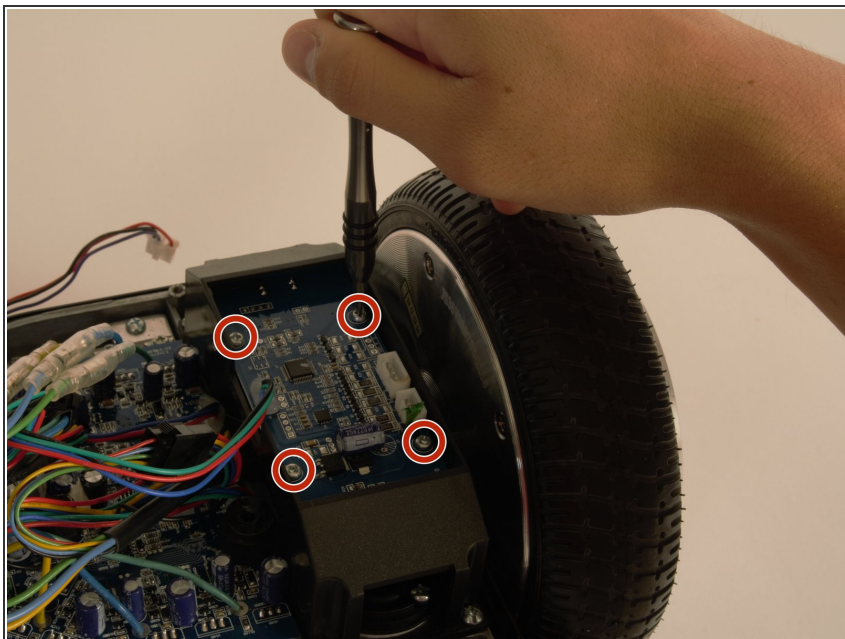
- Follow the wires from the panels to the motherboard.
  - You may need to cut any zip ties that are holding the wires together.
  - There is one connection on the battery side and three on the other side that must be removed.
- ⚠ These connections may be difficult to remove. Try to securely press the connection and pull firmly.
- Your back panels are now completely removed.

### Step 4 — Gyroscope



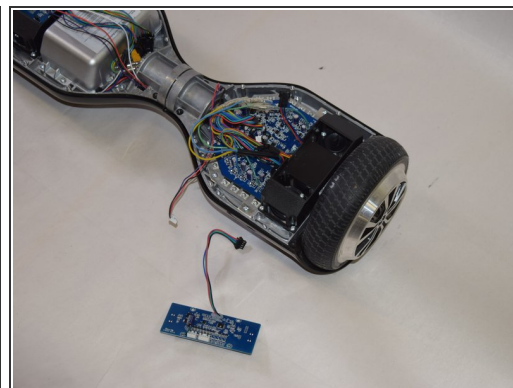
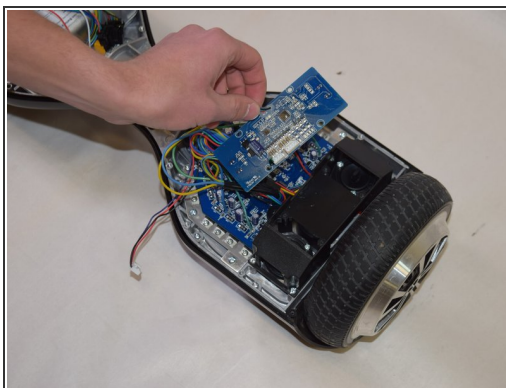
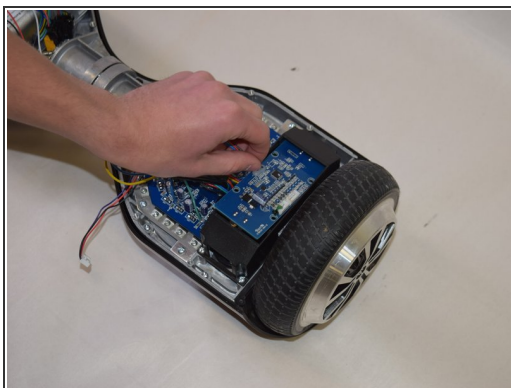
- Disconnect the gyroscope by disconnecting the wires attached to it. These wires are black, green, blue and red.

## Step 5



- Using your Phillips #2 screwdriver, remove the four 8mm screws marked in red from the gyroscope.

## Step 6



- Carefully remove the gyroscope component from the SwagTron.

To reassemble your device, follow these instructions in reverse order.