



Acer Chromebook CB3-431-C5EX Wireless Card Replacement

Use this guide to replace the Wireless Adapter on Your Chromebook

Written By: Holden Kurfess



INTRODUCTION

This repair guide is designed to instruct you on how to replace the wireless adapter in your Chromebook. All you will need for this replacement is a Phillips #0 screwdriver and a plastic spudger. Remember to completely power down your Chromebook before working on it, and handle the internal components of you Chromebook with care as they are fragile.



TOOLS:

- [Phillips #0 Screwdriver](#) (1)
 - [iFixit Opening Tool](#) (1)
-

Step 1 — Bottom Panel



⚠ Working on your device while it is turned on may result in electric shock. Make sure to shut down and unplug your device before you begin.

- Turn device over so the bottom panel is facing you.

Step 2



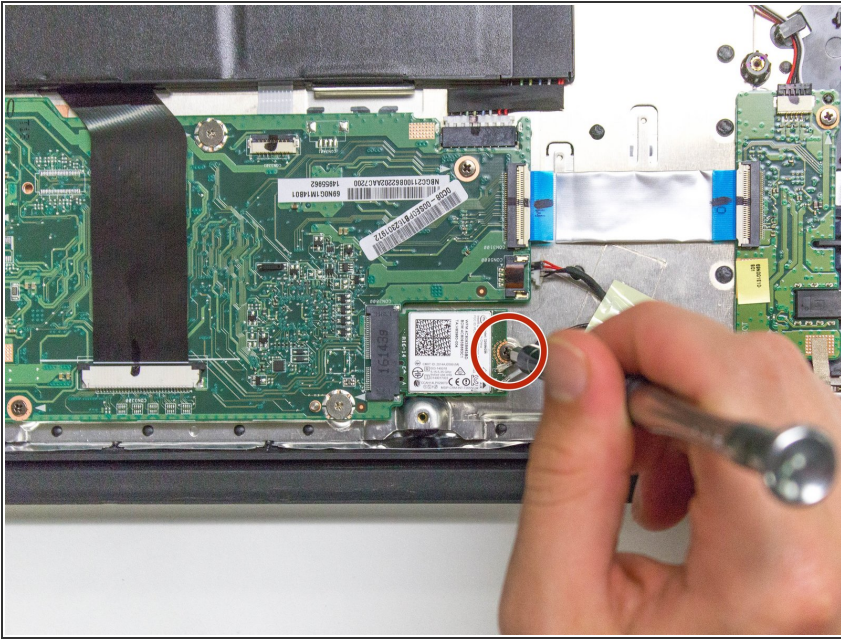
- Remove the eight 4mm Phillips #0 screws.
- Remove the two 6mm Phillips #0 screws.

Step 3



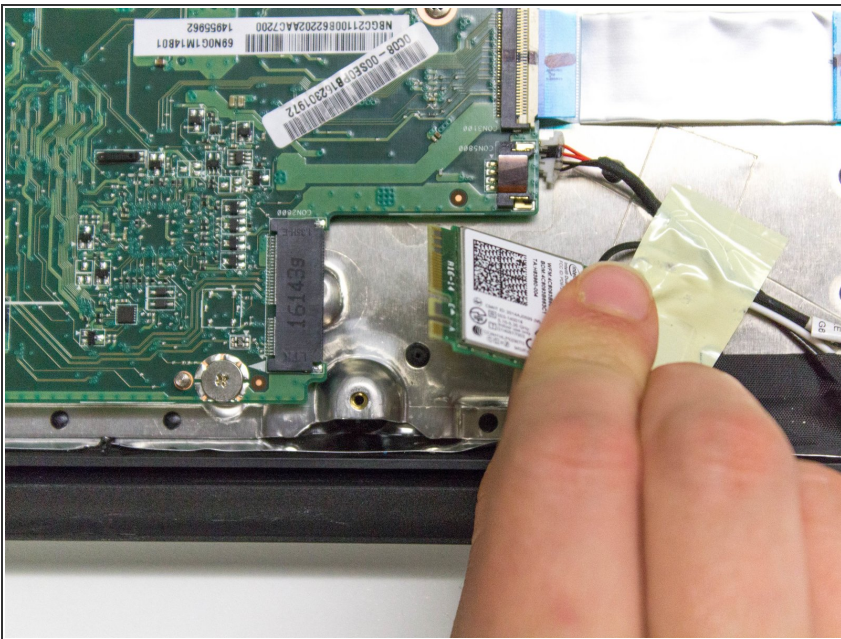
- Insert a plastic opening tool into the crack between the bottom panel and the side of the computer.
- Gently pry the panel off the computer by continuously pulling up and on the panel and moving the plastic opening tool around the crack until the panel comes off.
- ⓘ There are several clips holding the cover in place.
- Remove the bottom panel and set it aside.

Step 4 — Wireless Card



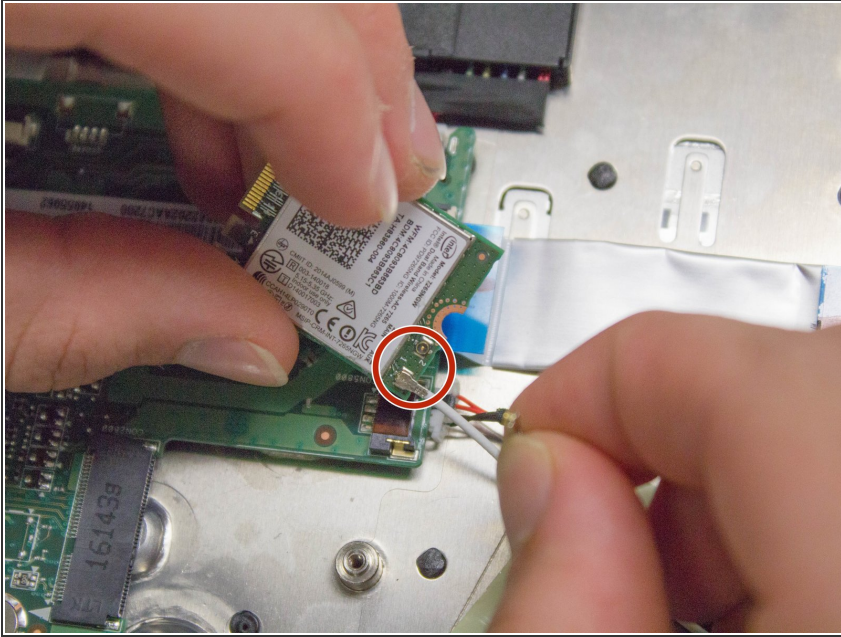
- Remove the 4mm Phillips #0 screw securing the wireless adapter to the main circuit board.

Step 5



- Unplug the Wireless adapter from the main circuit board by giving the adapter light pressure and sliding it out of its port.

Step 6



- Detach the two cables from the Adapter by pulling directly up on them, and then remove the adapter.
- ⓘ Note that the black cable is already detached in this photo to show what it looks like with the cables removed.
- ★ Be sure to note the original locations of the black and white cables when installing the new wireless adapter.

To reassemble your device, follow these instructions in reverse order.