



Acer Chromebook CB3-431-C5EX Power Port Replacement

This guide will instruct you on how to replace the power port on your Acer Chromebook.

Written By: Cayley Ho



INTRODUCTION

This is a guide designed to instruct you on how to replace the power port on your Chromebook. Make sure that your computer is powered off before you begin to work on it. All you need for this replacement is a Phillips #0 screwdriver, a plastic spudger, and tweezers. Remember to be careful when handling the internal components of your computer as they are fragile.



TOOLS:

- [Phillips #0 Screwdriver](#) (1)
-

Step 1 — Bottom Panel



⚠ Working on your device while it is turned on may result in electric shock. Make sure to shut down and unplug your device before you begin.

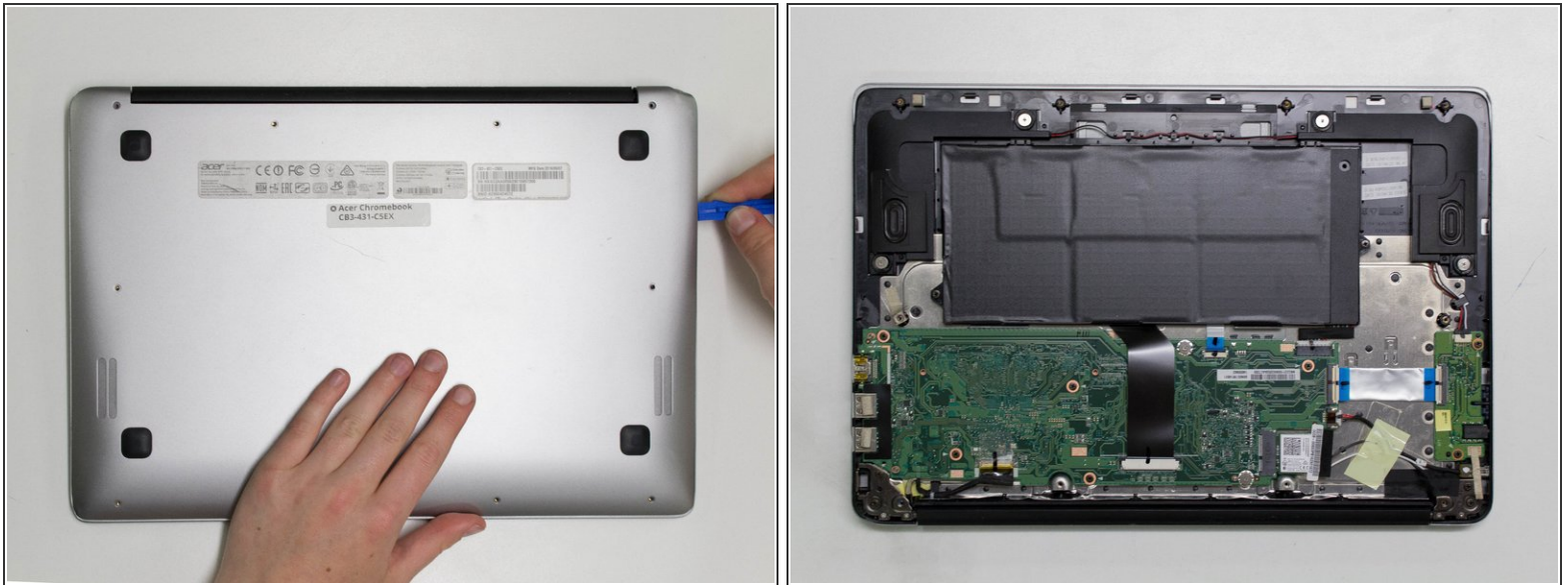
- Turn device over so the bottom panel is facing you.

Step 2



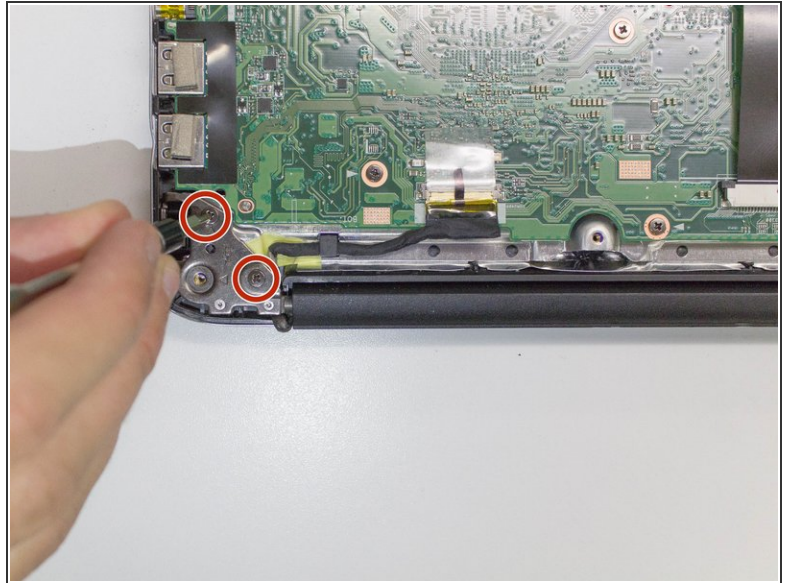
- Remove the eight 4mm Phillips #0 screws.
- Remove the two 6mm Phillips #0 screws.

Step 3



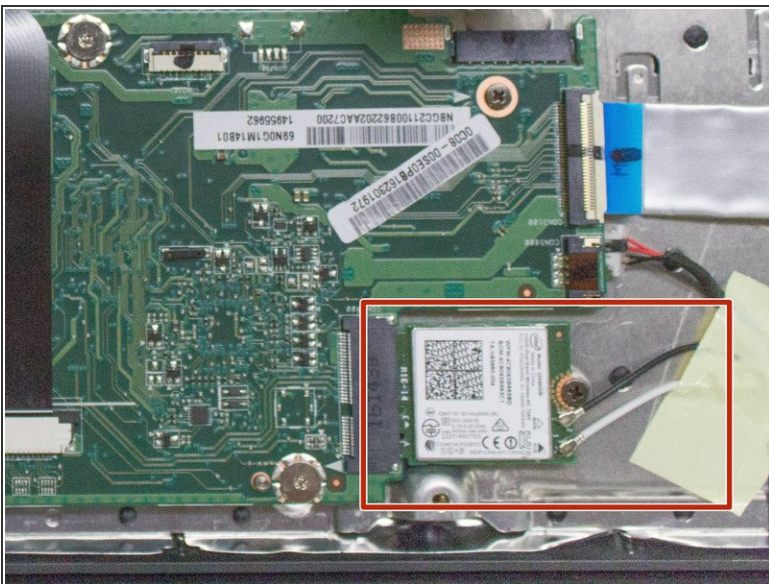
- Insert a plastic opening tool into the crack between the bottom panel and the side of the computer.
- Gently pry the panel off the computer by continuously pulling up and on the panel and moving the plastic opening tool around the crack until the panel comes off.
- ⓘ There are several clips holding the cover in place.
- Remove the bottom panel and set it aside.

Step 4 — Power Port



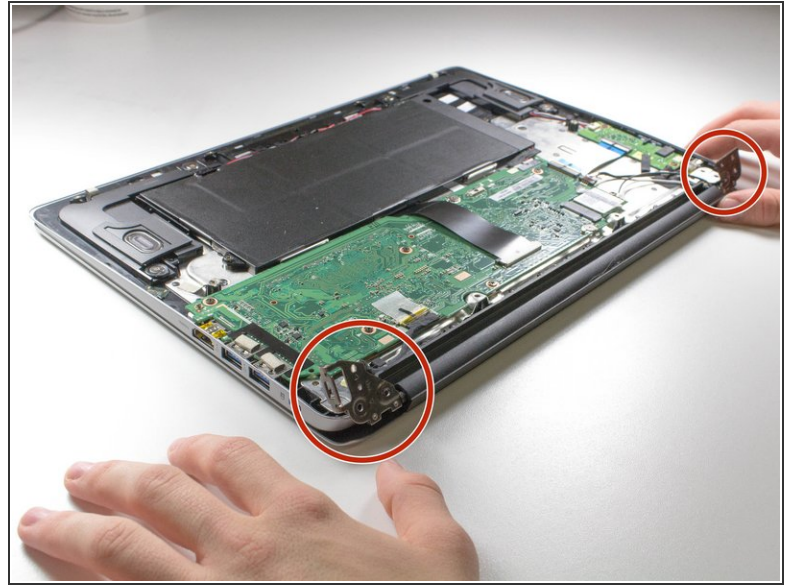
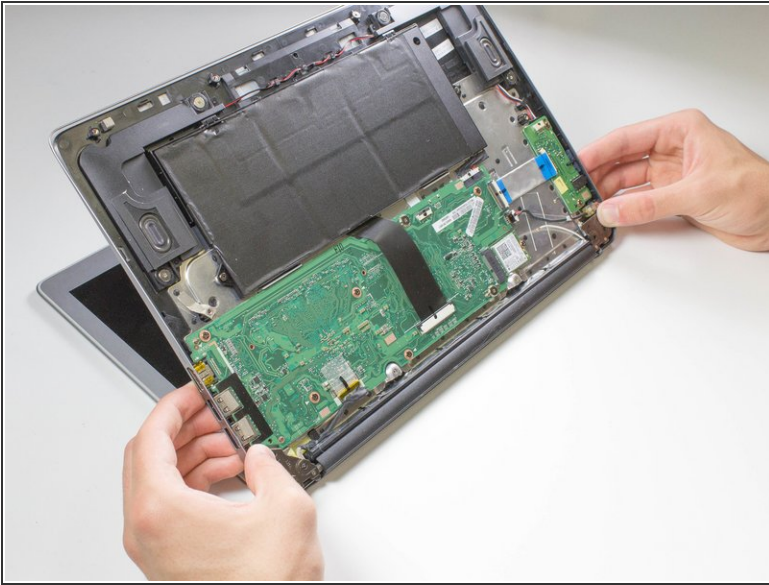
- Remove the four 4mm Phillips #0 screws from the hinge plates on the two corners of the laptop.
- ⓘ Remove any manufacturers tape holding in the wires.

Step 5



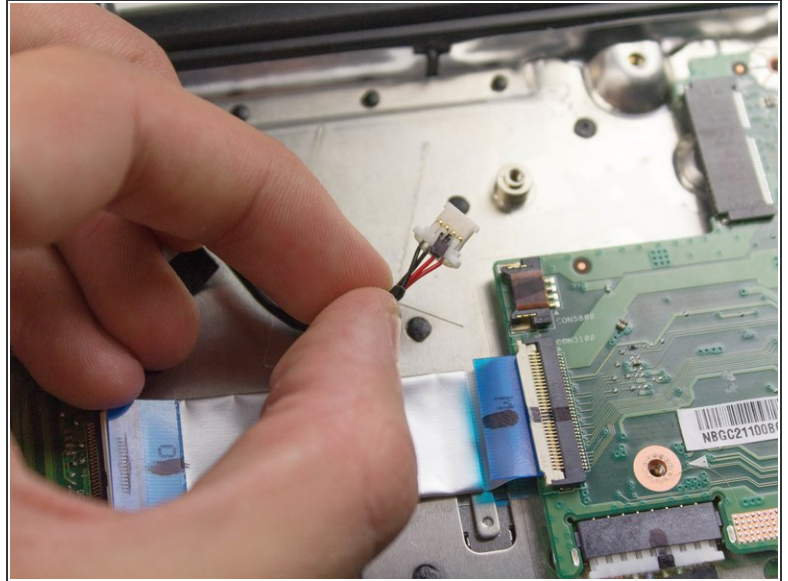
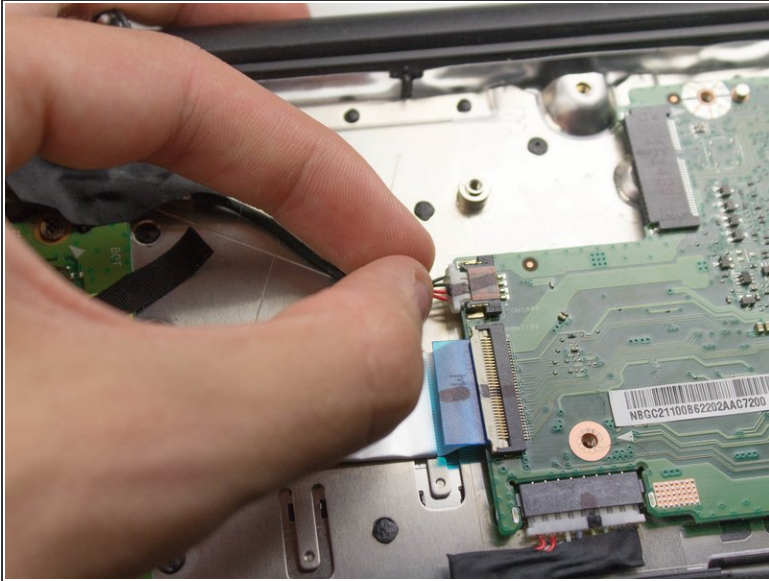
- Disconnect black and white wires from the wireless adapter by gently pulling up on the metal connectors with your fingernail.

Step 6



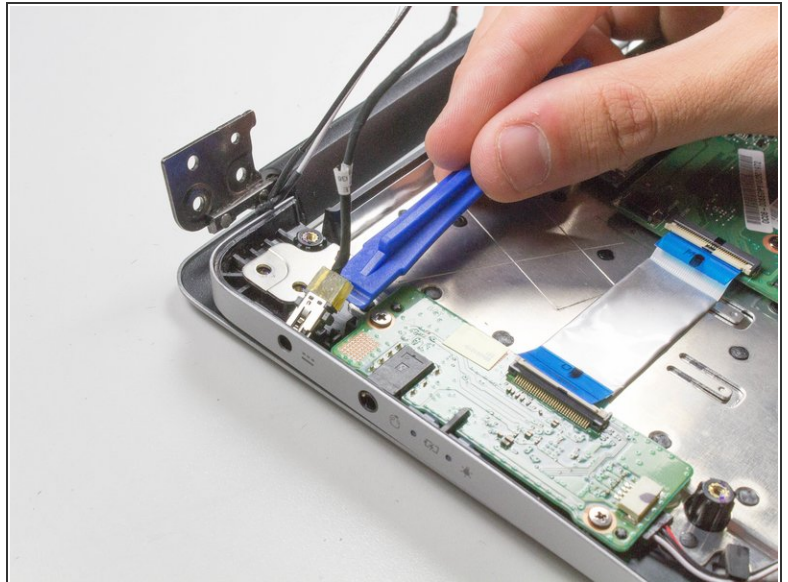
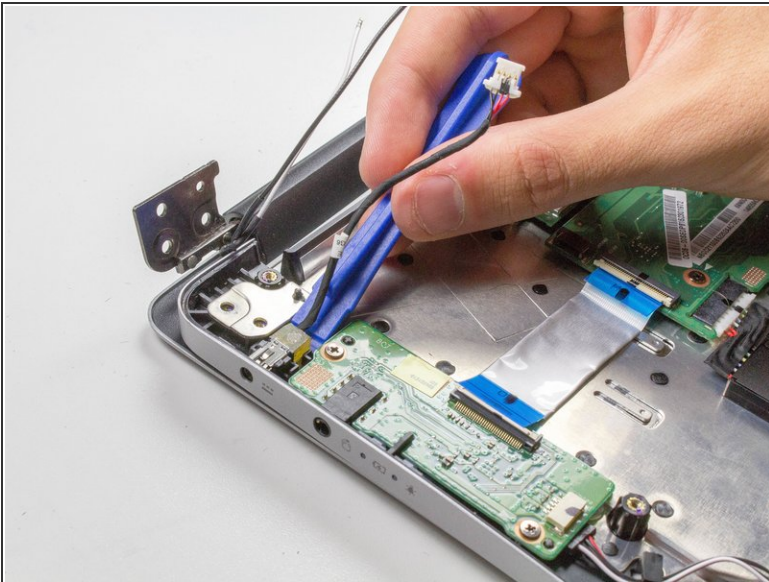
- Open hinges to the screen. and then slide base of the computer off of the hinges.
- ⓘ It is easiest to do this by holding the hinges in place and opening the entire laptop. Then close the laptop while letting the hinges remain open.
- This will detach the base of the computer from the screen in order to allow better access to the power port.

Step 7



- Detach the power port plug from the main circuit board by grabbing it by the sides of the plastic with the tweezers and gently pulling it out.

Step 8



- Remove the power port entirely from the computer by pulling up on the plastic portion of the port with a plastic opening tool.

To reassemble your device, follow these instructions in reverse order.