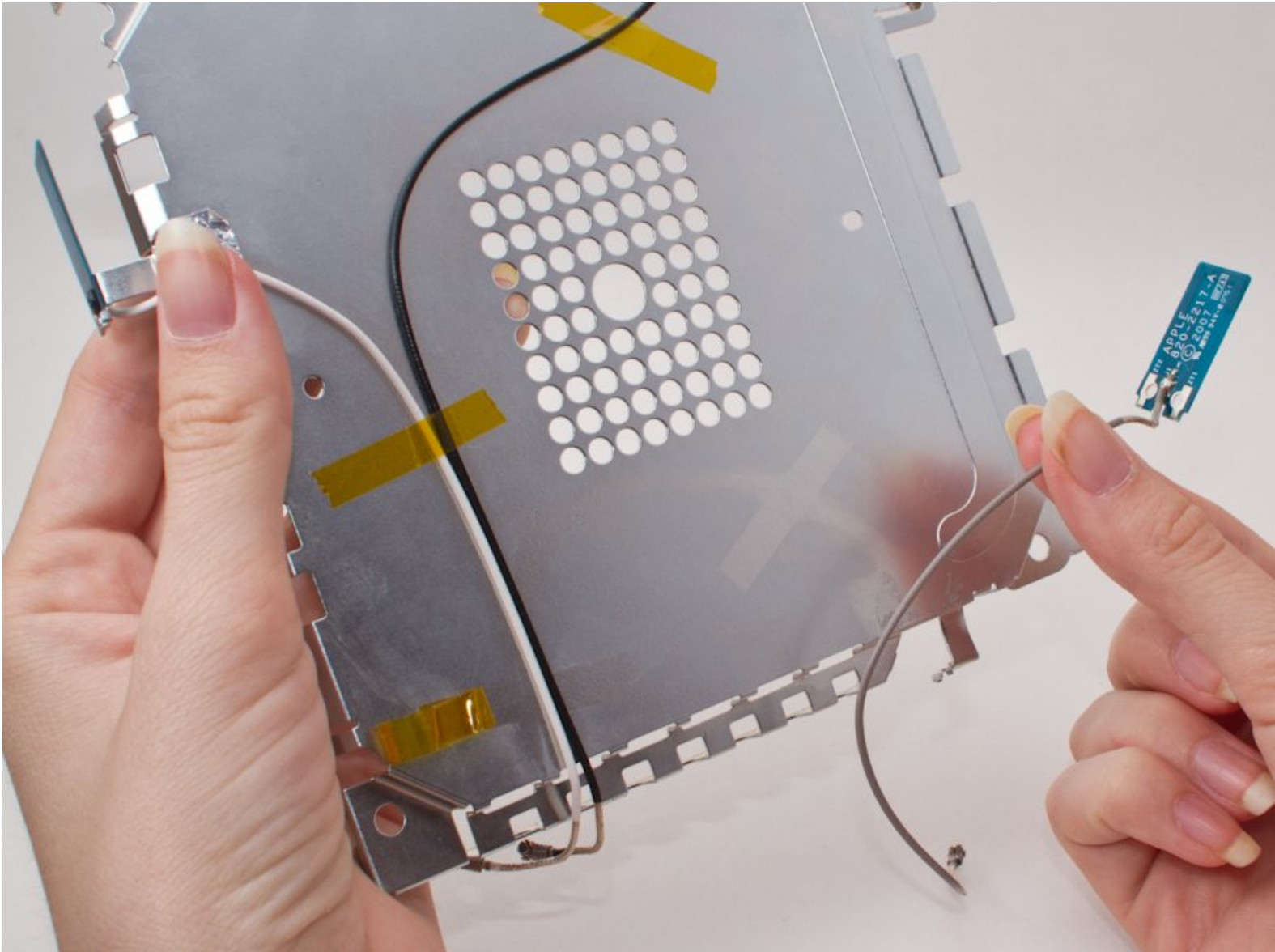




Apple AirPort Extreme Model A1354 Antenna Replacement

This guide explains how to access and remove an antenna so that it can be replaced.

Written By: Brandon



INTRODUCTION

If the base station is sending out a poor signal, an antenna may need to be replaced.



TOOLS:

- [Phillips #00 Screwdriver](#) (1)
 - [iFixit Opening Tools](#) (1)
-

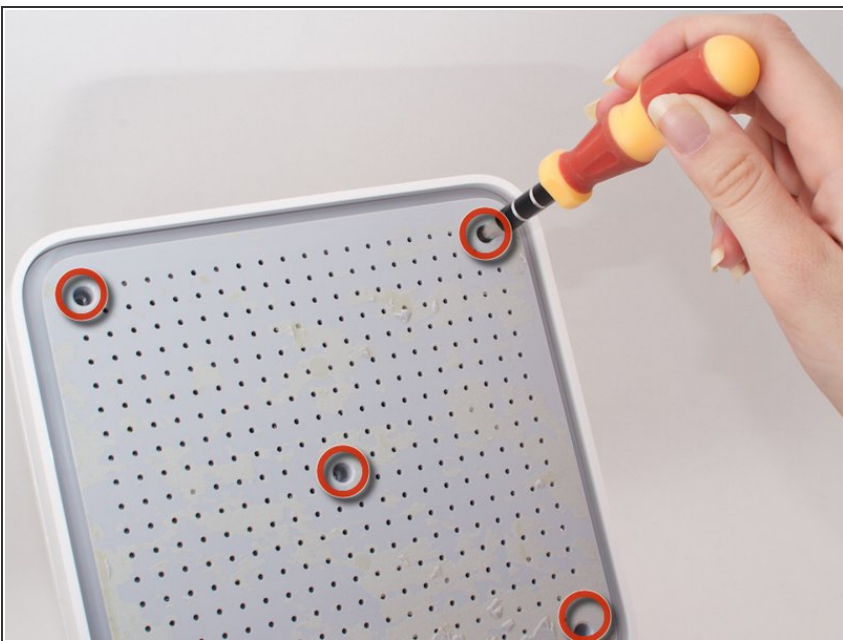
Step 1 — Outer Case



- First start by peeling off the outer rubbery covering on the bottom of the device.

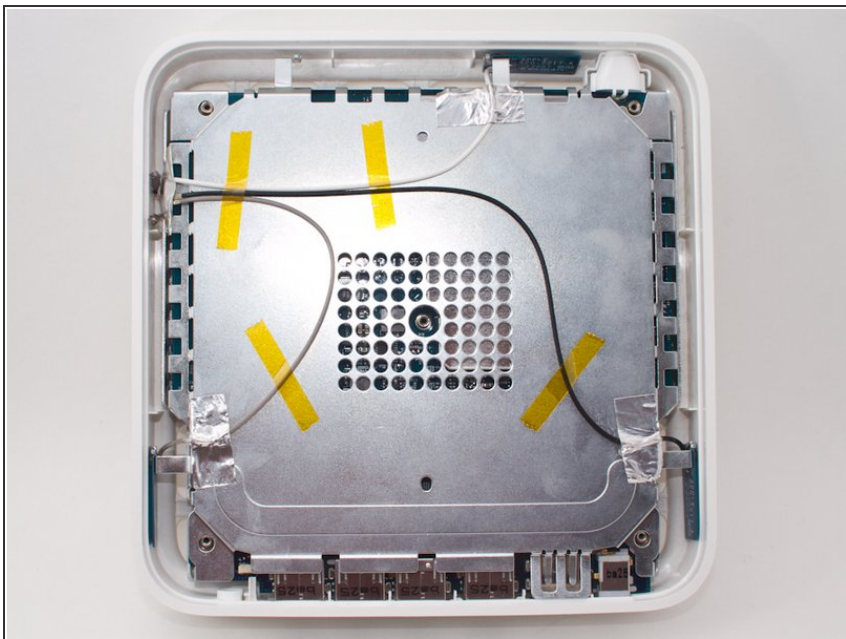
⚠ CAUTION: This part is very fragile, so it is recommended that a blow dryer is used on the covering to heat it up. Simply blow dry the covering while slowly peeling it away, and the covering will not tear.

Step 2



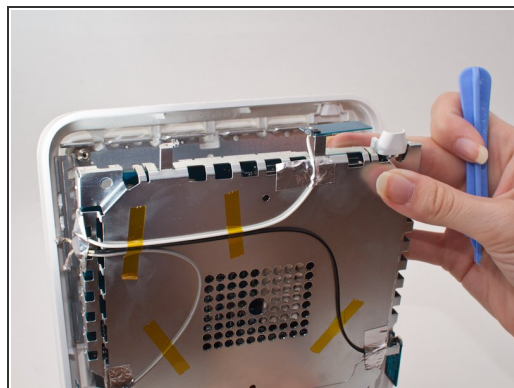
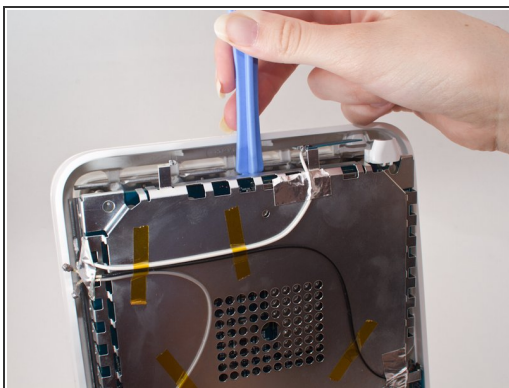
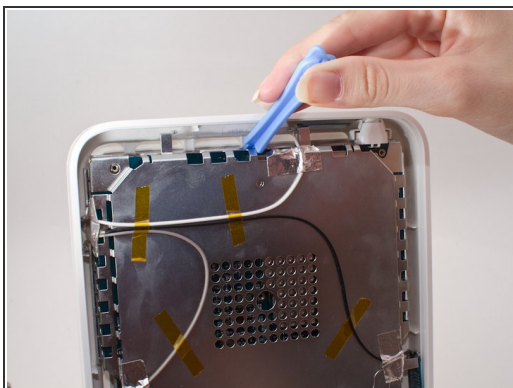
- After removing the rubber covering, unscrew the five 4.9mm Phillips screws in the holes of the plastic casing.

Step 3



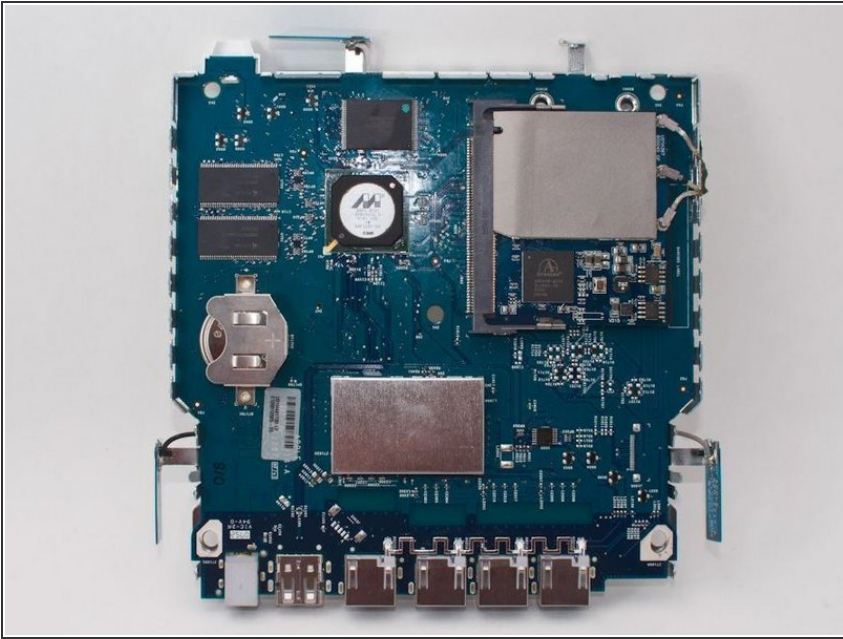
- After unscrewing all five screws, remove the plastic casing. The back should now look like the picture shown.

Step 4



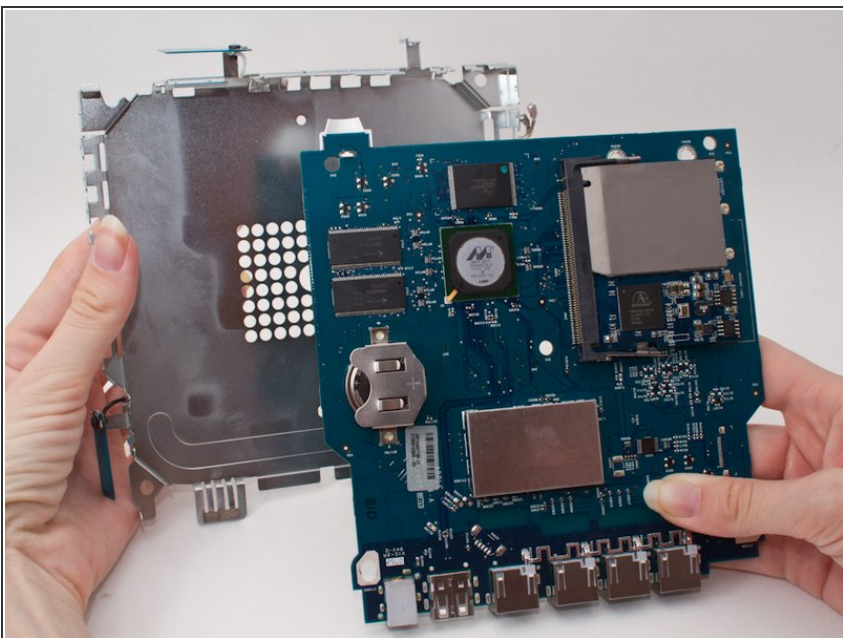
- The inner metal casing is latched inside the outer white plastic shell, so insert a pry tool underneath the metal casing and pry it apart from the shell.
- It should make a click when it comes apart.

Step 5



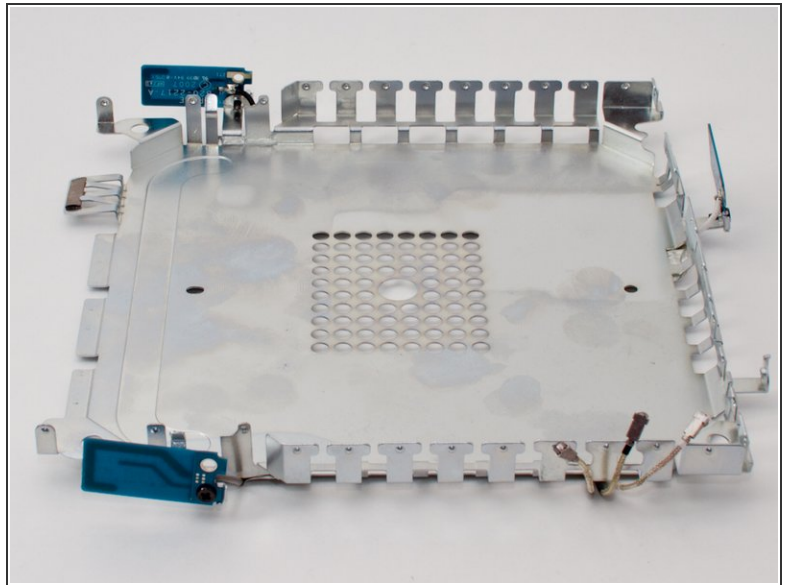
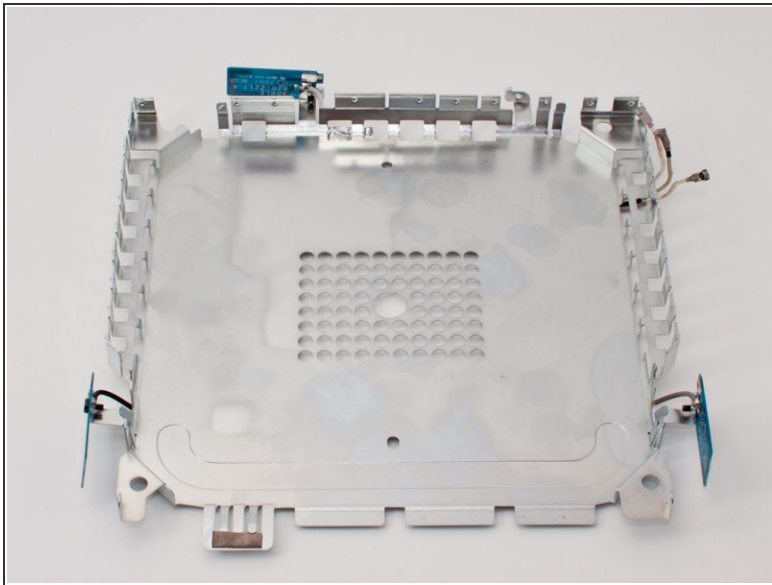
- Remove the outer casing.
- The exposed logic board should look like this.

Step 6 — Antenna



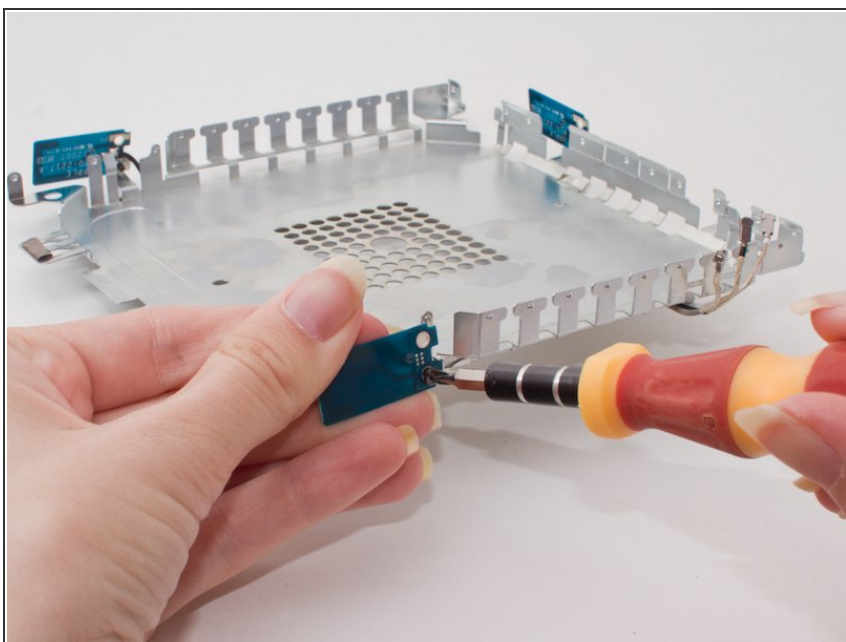
- Remove the metal casing by gently prying the logic board away with your hands.
- This should be pretty easy, you already removed the screws holding these pieces together.

Step 7



- Turn the device so that the antenna to be replaced is facing you.

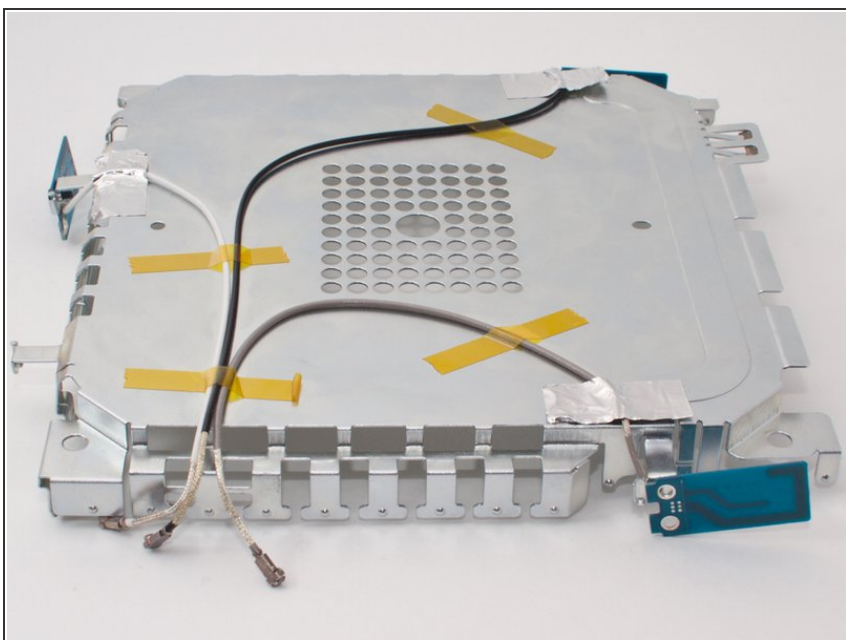
Step 8



⚠ Caution: Be careful not to bend the metal strip that the antenna is attached to. This may cause problems during reassembly and use.

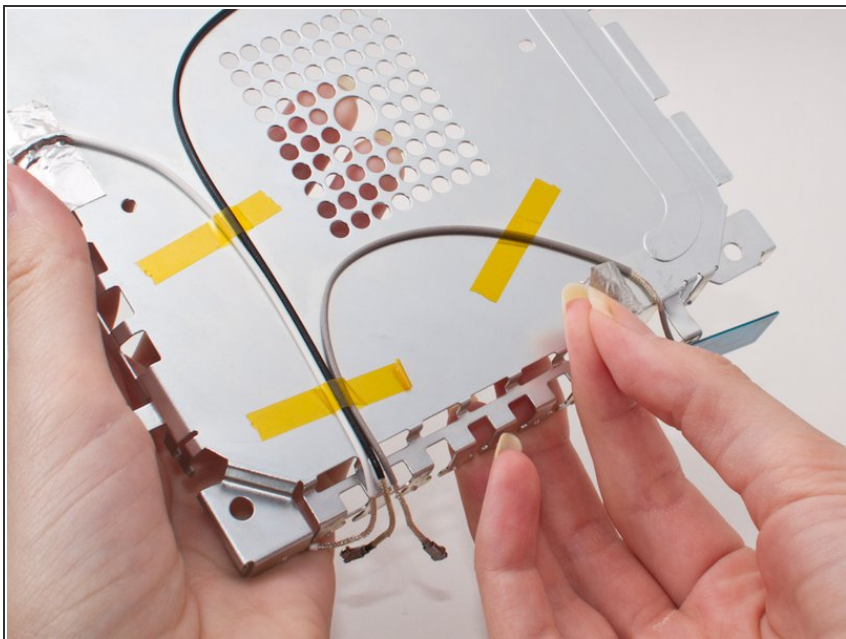
- Using the screwdriver, unscrew the 2.5mm Phillips screw on the antenna.

Step 9



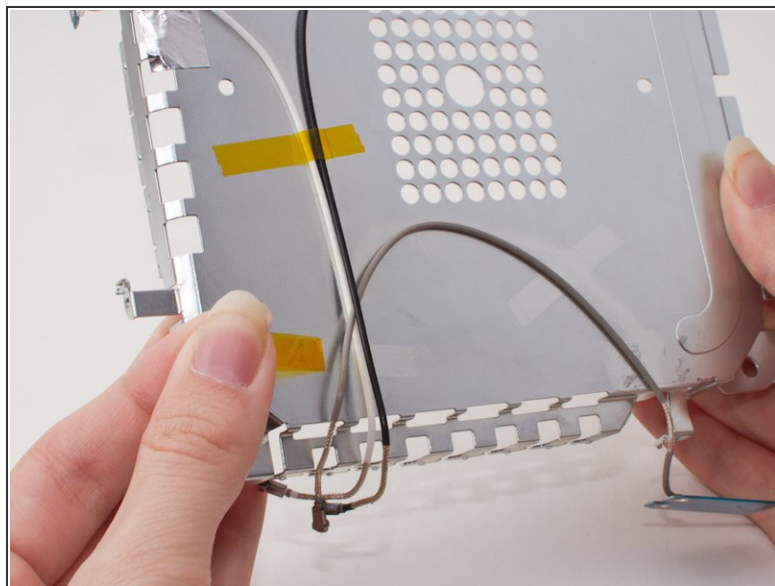
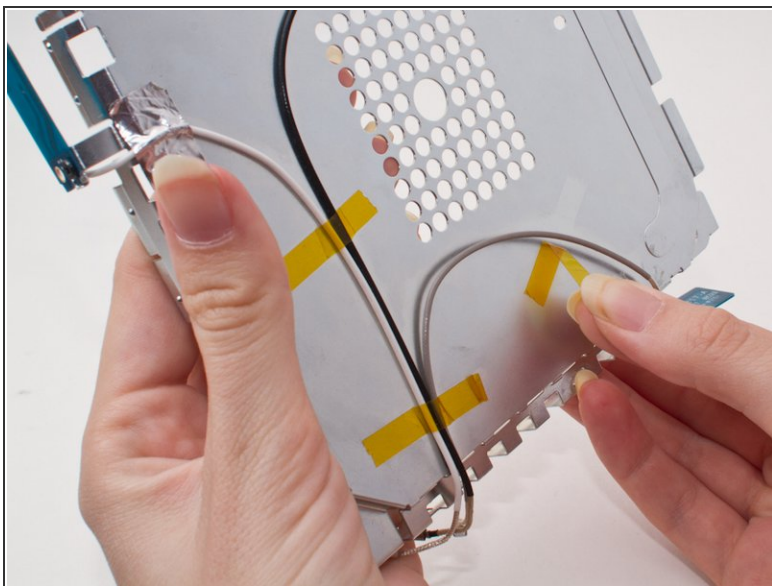
- Turn the device over so that the antenna with the screw removed is still facing you.

Step 10



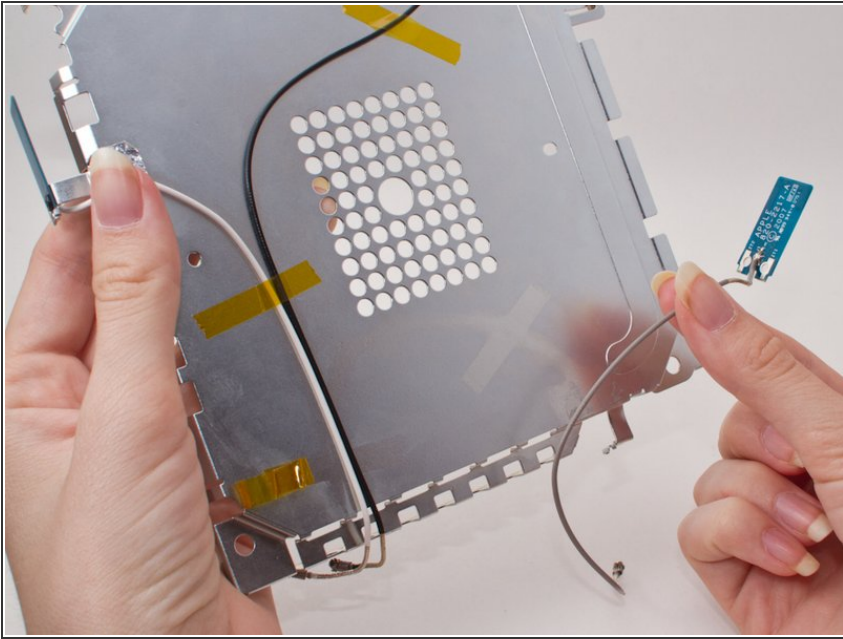
- Carefully peel back the metallic silver tape covering the cable of the antenna to be removed.

Step 11



- Carefully peel back the clear yellow tape covering the cable of the antenna to be removed.

Step 12



- Remove the antenna.

To reassemble your device, follow these instructions in reverse order.