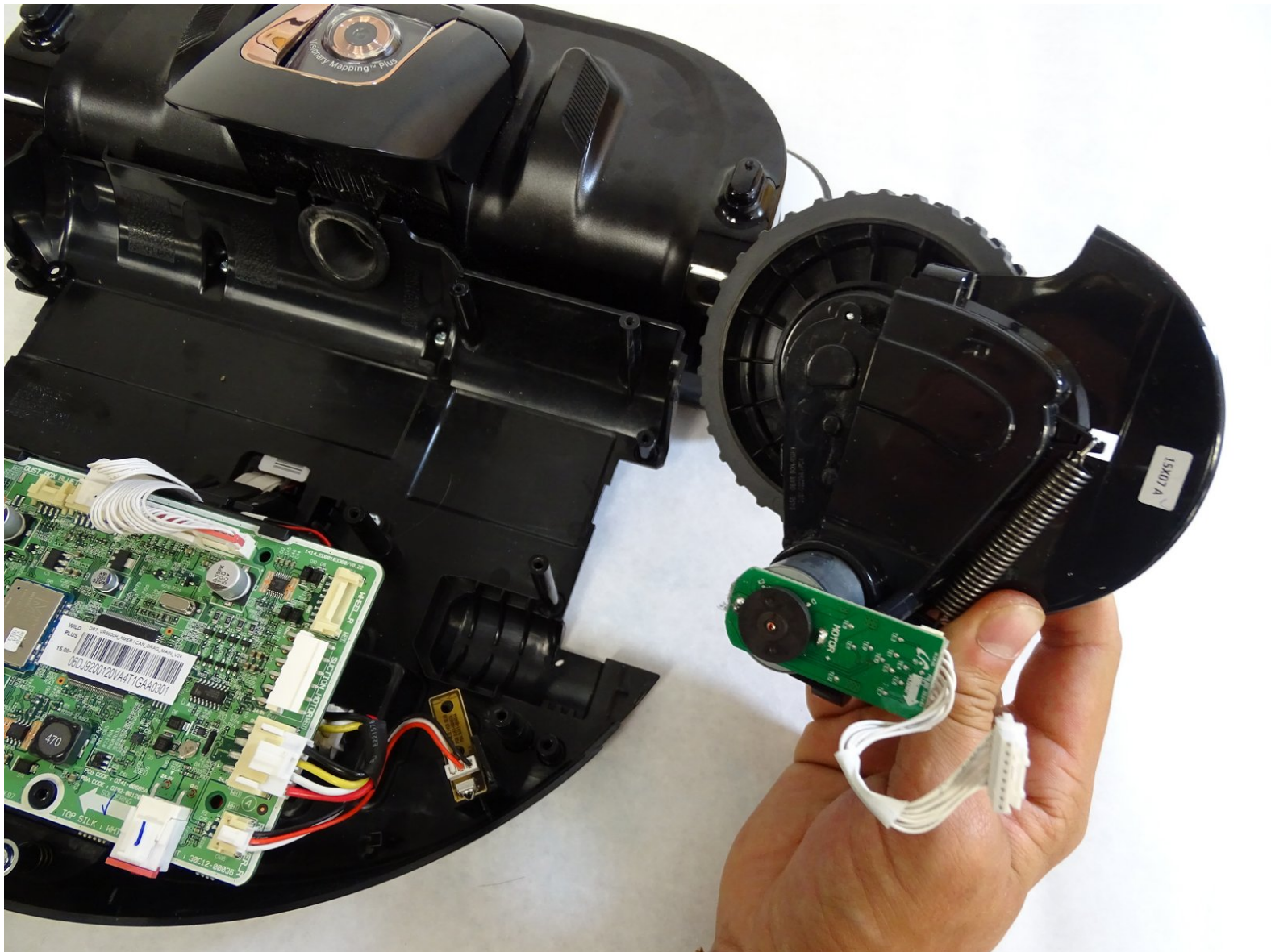




Samsung POWERbot VR9000 Right Driving Wheel Replacement

Replace the left wheel of your POWERbot to fix movement issues.

Written By: Kyle Chin



INTRODUCTION

Replace the right wheel of your POWERbot. This can be done to resolve a persistent error code (C03) and/or to simply eliminate movement issues.



TOOLS:

- [Phillips #1 Screwdriver](#) (1)
 - [iFixit Opening Tools](#) (1)
-

Step 1 — Top Chassis



- Turn off the emergency switch located at the bottom right of the POWERbot.

Step 2



- Insert the plastic opening tool under the black cover, near the Samsung logo on the back of the device, and partially pry open.

Step 3



- Slide the plastic opening tool to the left, remaining under the black cover, until two left side pins have been detached. Then slide the plastic opening tool to the right until two right side pins have been detached.
- Grab the two clips near the front of the black cover, on in front of each wheel. Pull the clips away from the wheels.

Step 4



- Remove the black cover.

Step 5



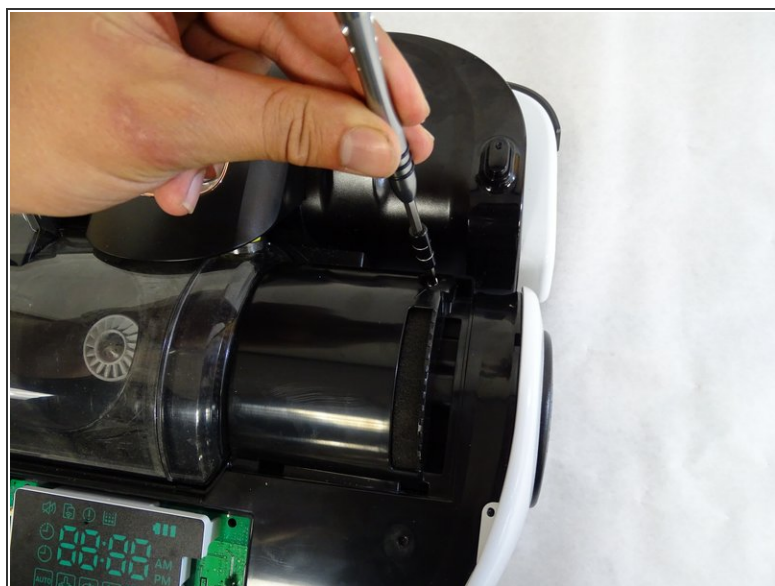
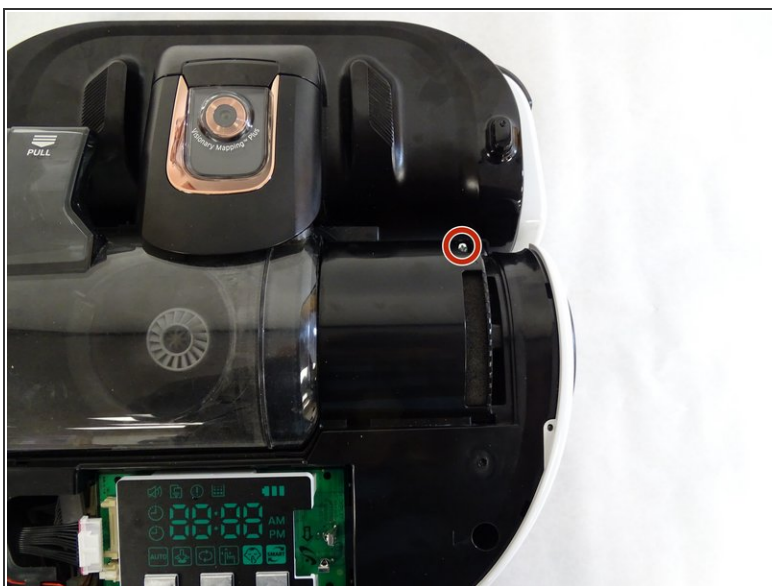
- Insert the plastic opening tool under copper-colored cover, under the words "CycloneForce," and pry open, applying a small rotation, until the two pins are released .
- Grab the underside of the cover and lift upwards while pushing forward until the cover pops off.

Step 6



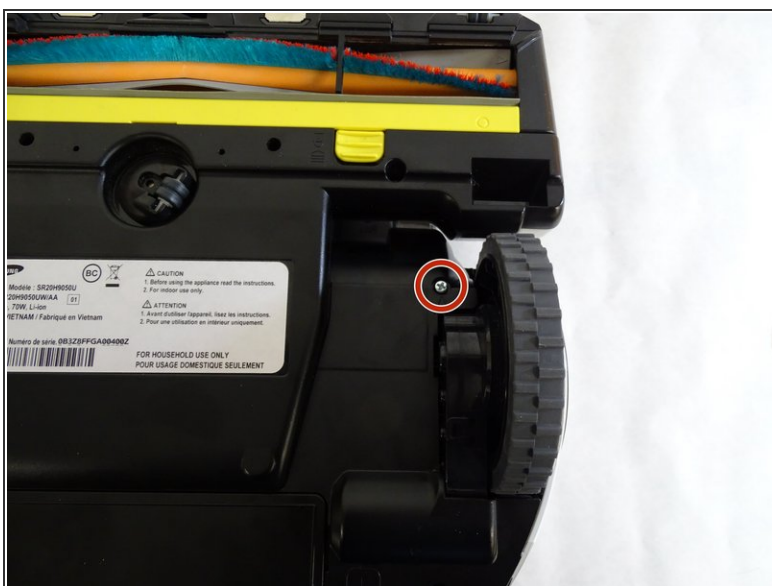
- Remove the three 6mm Phillips #1 screws in the holes near the back of the device.

Step 7



- Remove the 6mm Phillips #1 screw in the hole that was under the copper-colored vacuum cover.

Step 8



- Flip the device over and remove the 6mm Phillips #1 screw in front of the left (from this perspective, right) wheel.

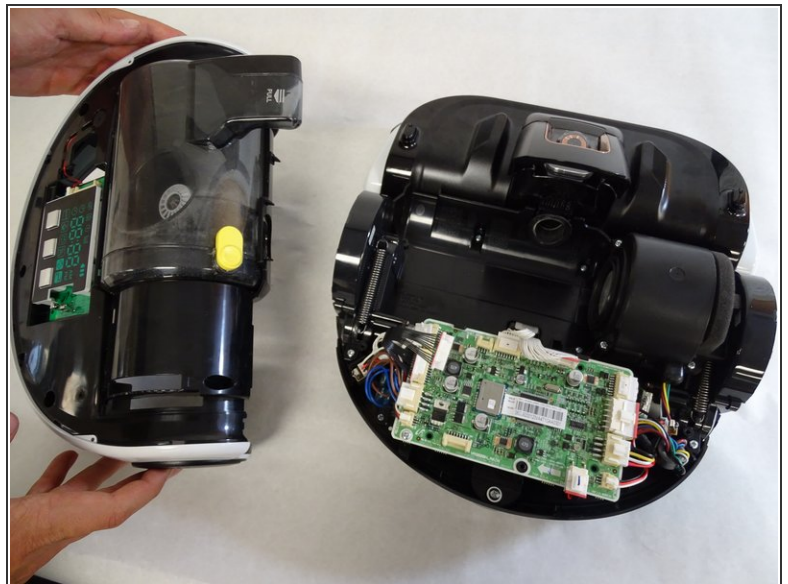
Step 9



- Detach the wider circuit connector by pressing down gently on the left end of the clip and pulling the connector out.

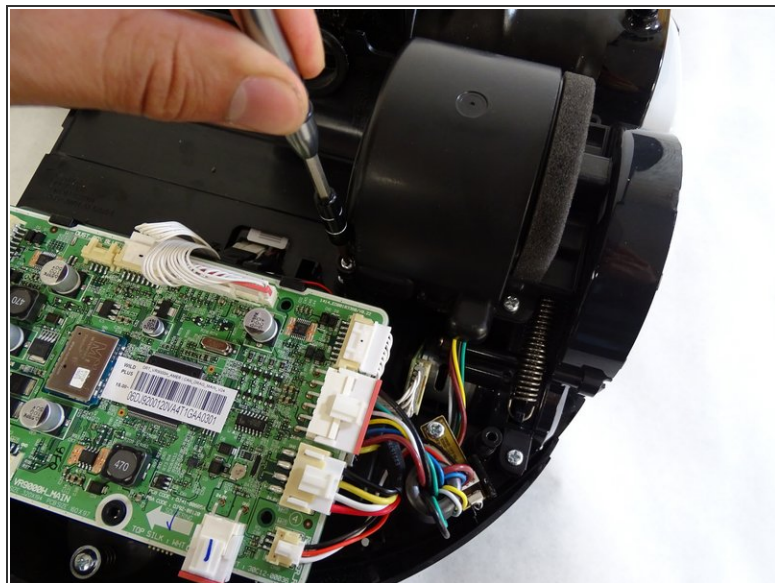
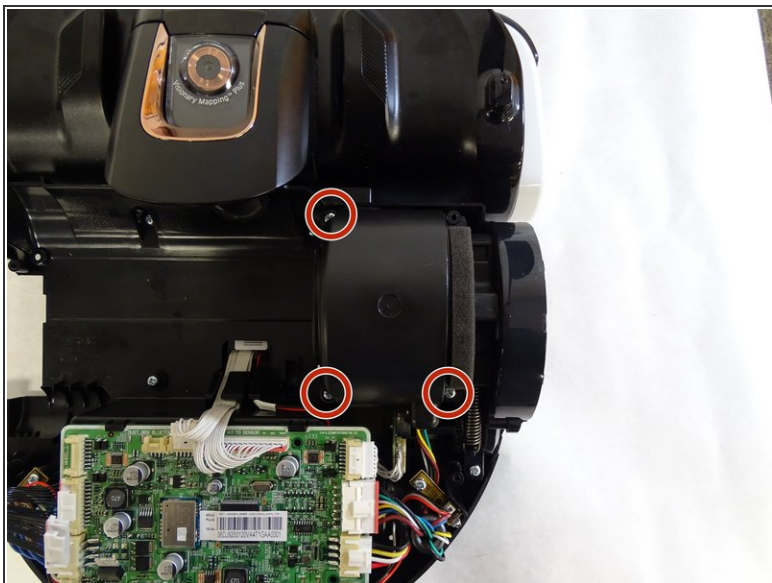
⚠ Pull the connector out by the top and bottom of the white piece and not by the wires.

Step 10



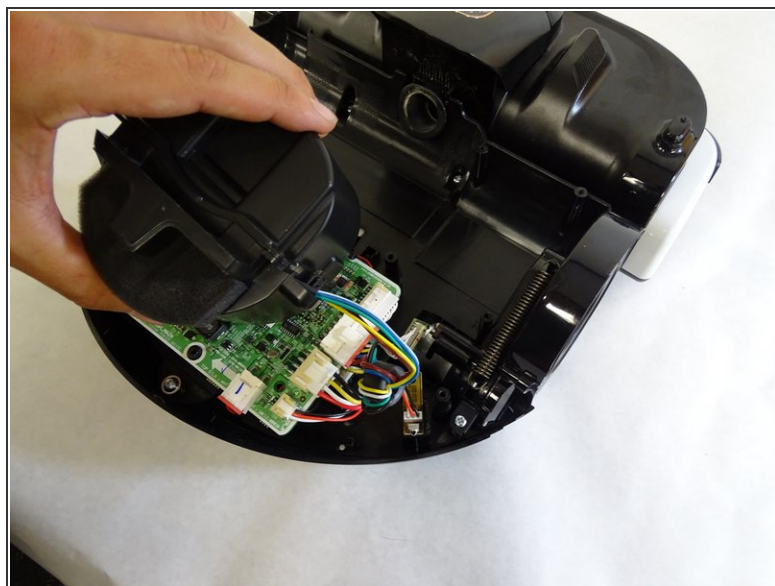
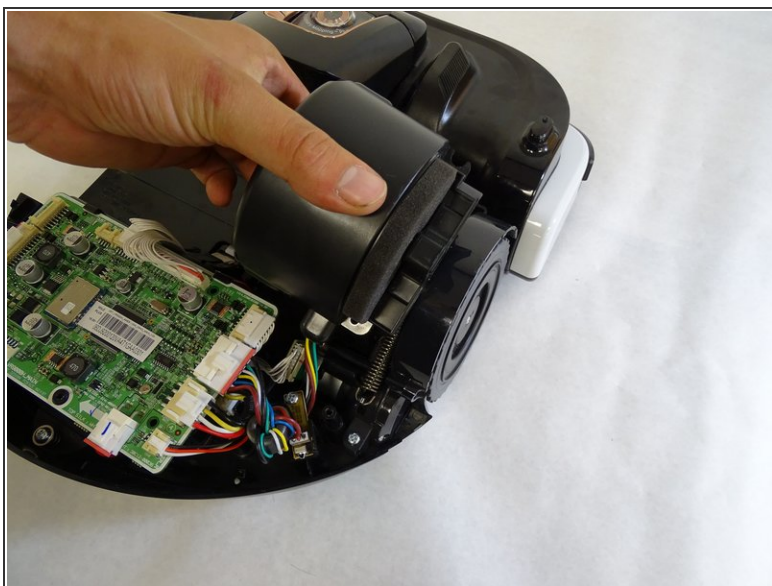
- Remove the top chassis from the POWERbot by grabbing the wheel covers and lifting upwards.

Step 11 — Right Driving Wheel



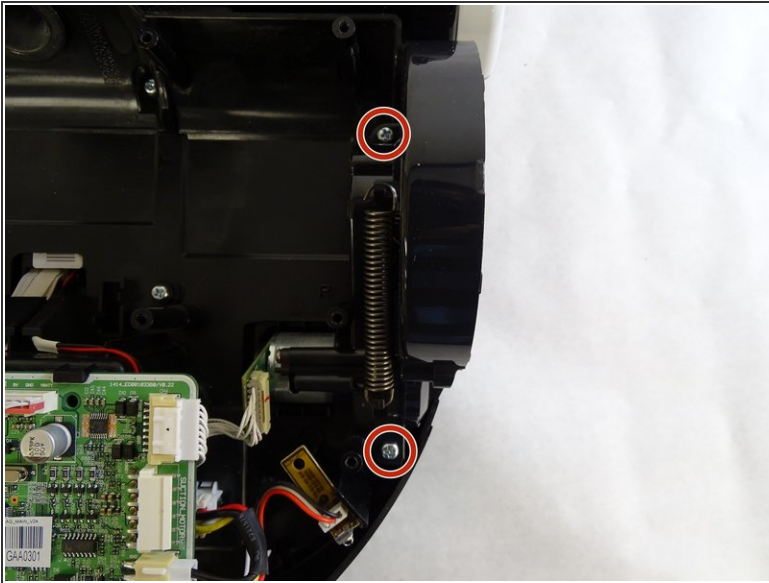
- Remove the three 5mm Phillips #1 screws in the holes around the vacuum motor.

Step 12



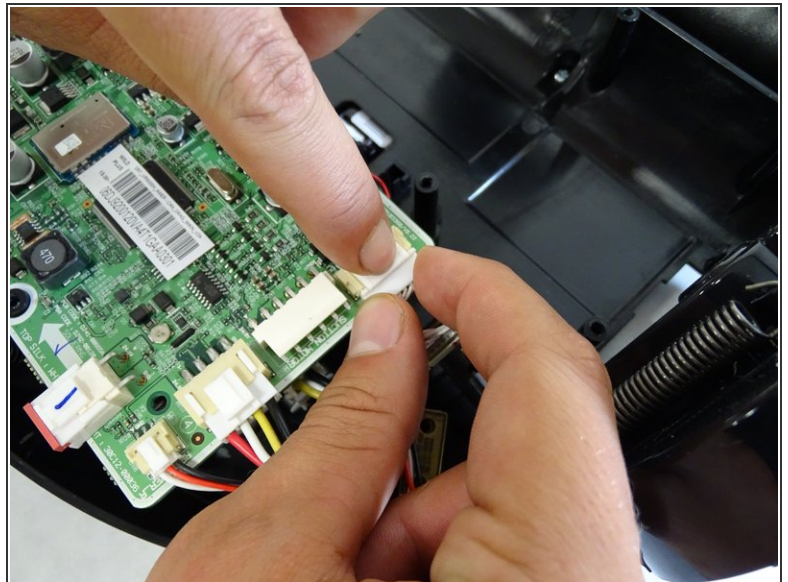
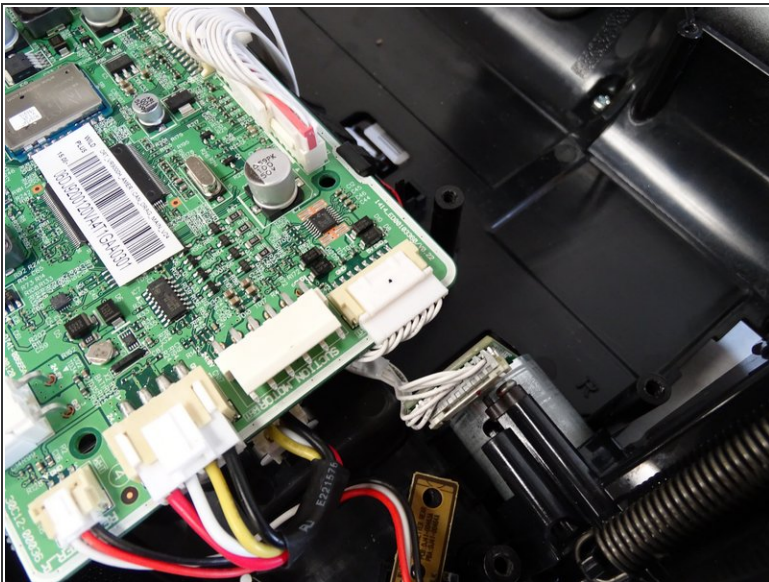
- Lift the vacuum motor by grabbing the body of the motor and pulling upward.
- Set the vacuum motor down on the circuit board. Be sure not to strain the wires connecting the motor to the circuit board.

Step 13



- Remove the two 5mm Phillips #1 screws in the holes closest to the right wheel.

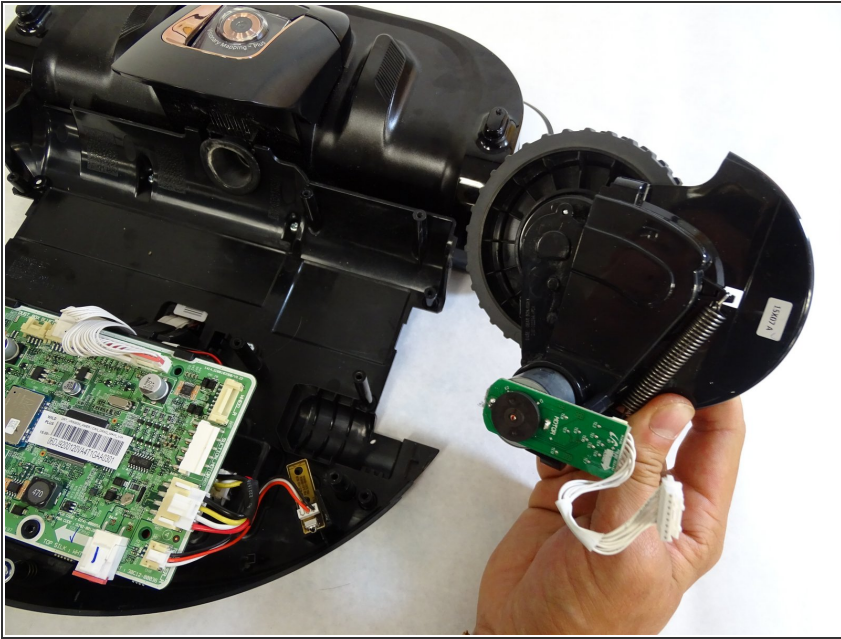
Step 14



- Detach the top-most circuit connector on the right side by pressing down gently on the right end of the clip and pulling the connector out.

⚠ Pull the connector out by the top and bottom of the white piece and not by the wires.

Step 15



- Remove the driving wheel assembly from the POWERbot by grabbing the wheel and lifting upwards.

To reassemble your device, follow these instructions in reverse order.