

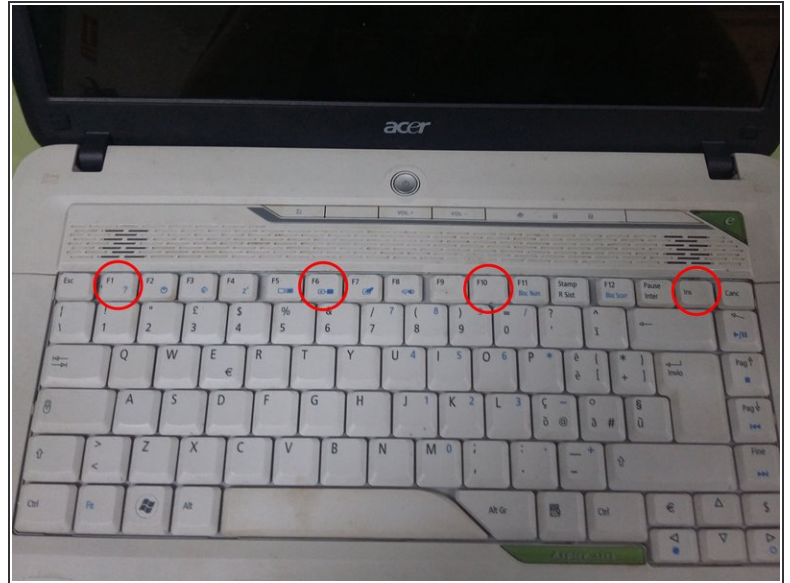


# Acer Aspire 5315 Assembly Replacement

Written By: Carlos Ibañez



## Step 1 — Assemble the keyboard



- To mount the keyboard, put the keypad and press until it clicks

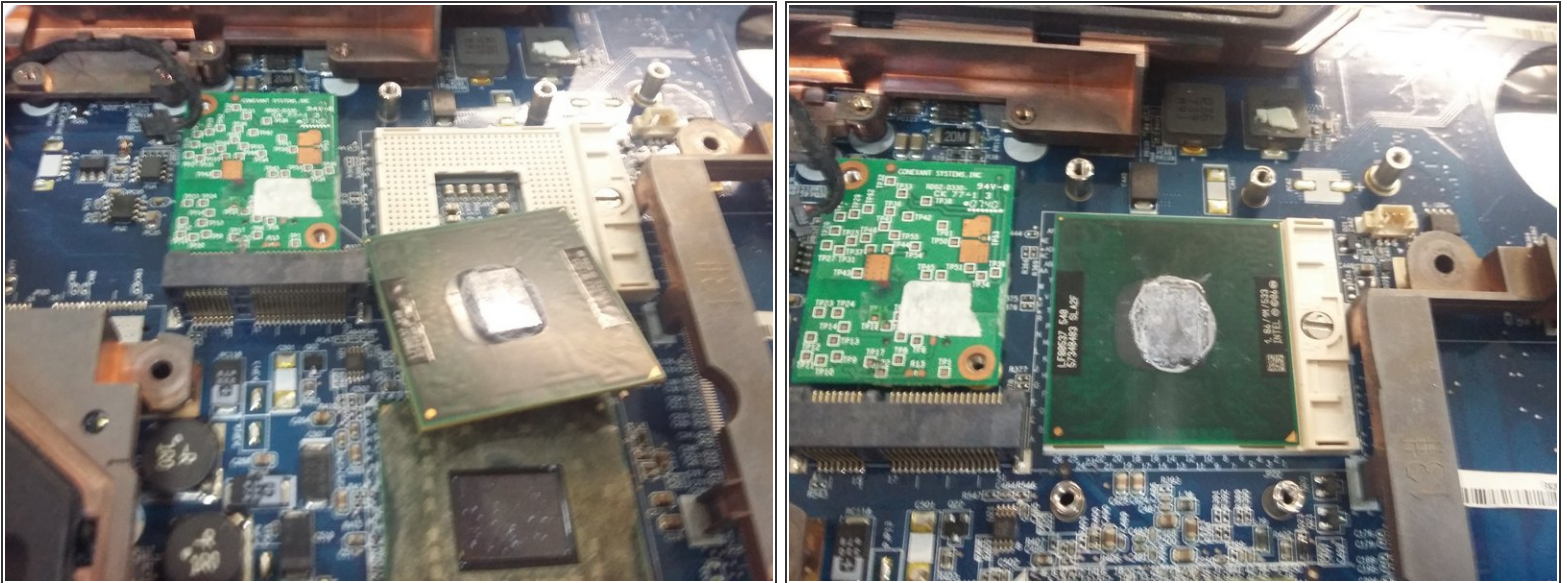
## Step 2 — Mount the network card



- To mount the network card, we have to put it diagonally if it can not be broken.
- When it is already on, it is only necessary to adjust the screw.
- To connect the two cables we have to put it on their sites and press until one click.

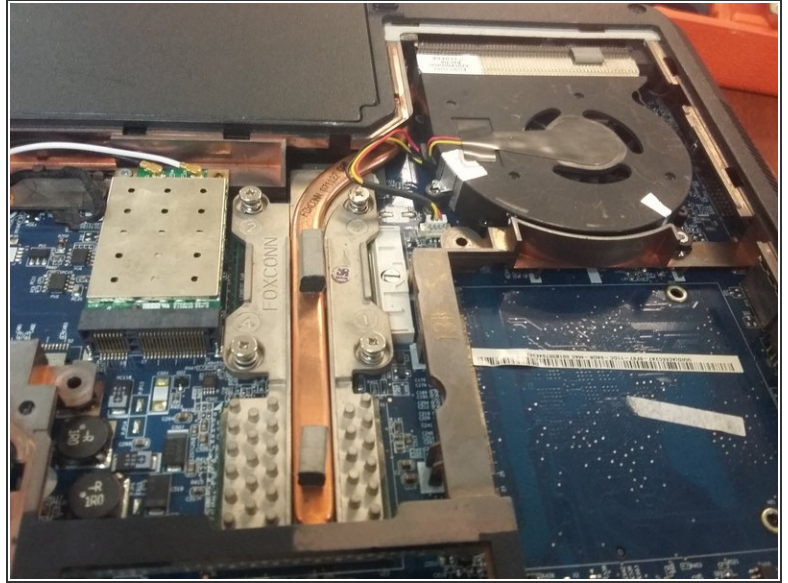


## Step 3 — Mount the processor



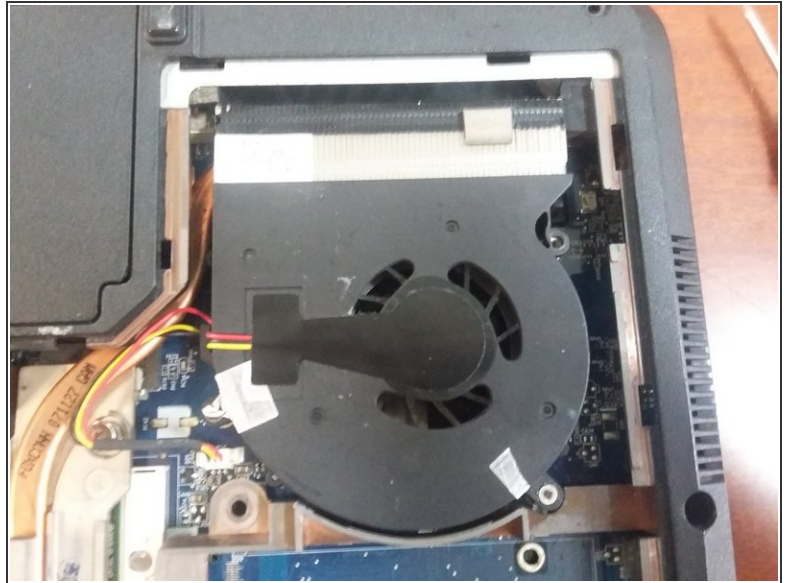
- To mount the processor, what we have to do is put it straight, if the pins break, it will no longer work.
- When it is well placed, we only have to adjust the screw until it is well fixed.

## Step 4 — Mount the heat sink



- To mount the heatsink, we have to take good care of it, and if the processor could not be reheated, it would be wrong.
- When it is well put put the four screws to fix it.
- Set the heatsink to the fan.

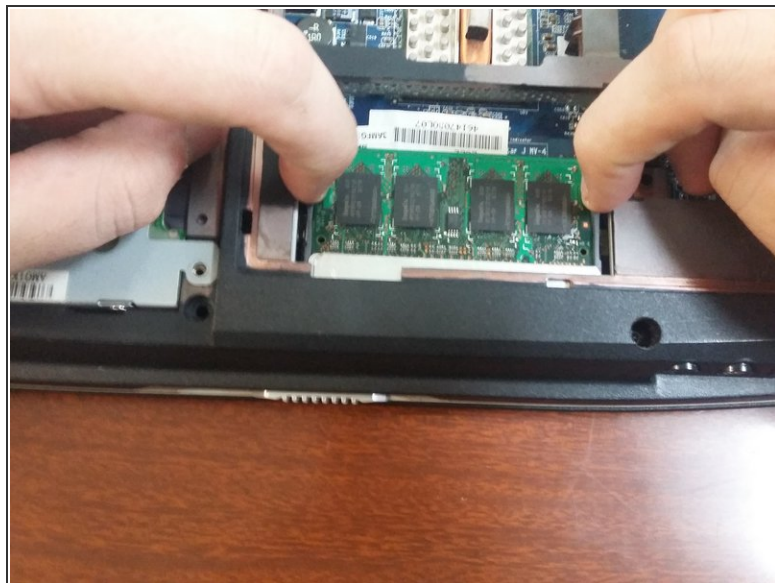
## Step 5 — Mount the fan



- When it is already cleaned, we return the four screws to it so that it does not open.
- Then we place it in its place on the motherboard and fix it.
- We do not forget to connect the cable.



## Step 6 — Put RAM memory



- To place the RAM we have to be careful that it can also be broken as the network card
- We have to put it diagonally so it does not break.

To reassemble your device, follow these instructions in reverse order.