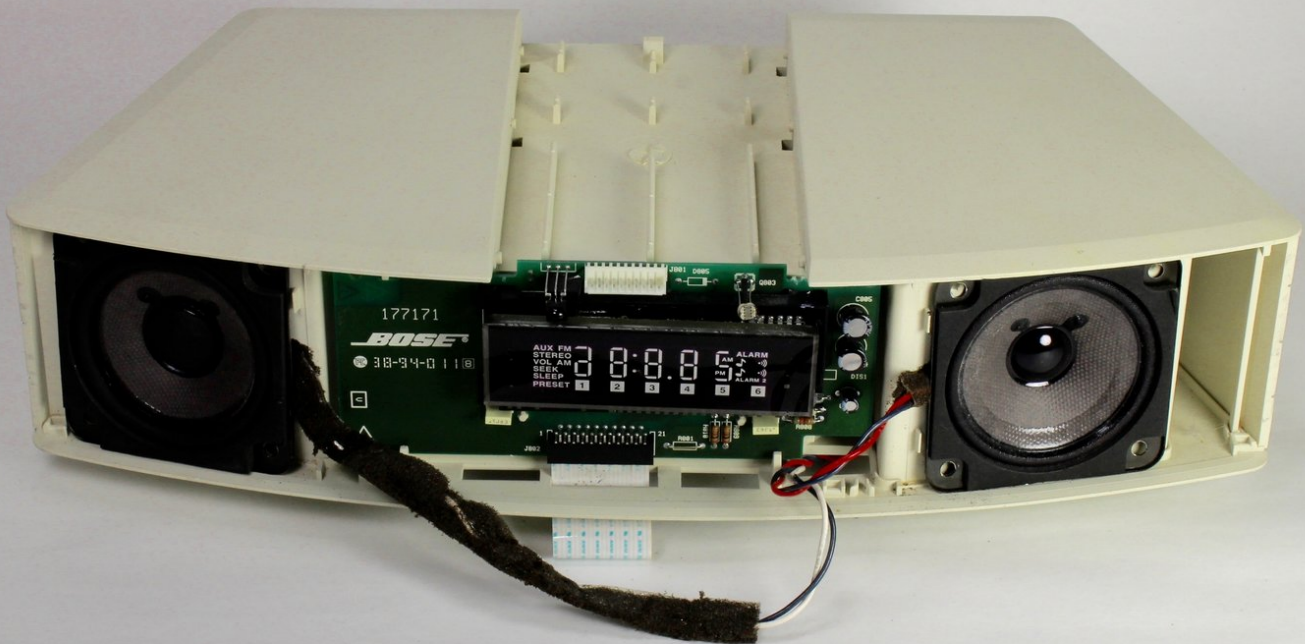




Bose Wave Radio AWR1-1W Screen Replacement

Remove the screen panel to replace a malfunctioning screen.

Written By: Cassie Harriman



INTRODUCTION

Screens often fail or stop displaying properly. Use this guide to remove and replace the screen assembly.



TOOLS:

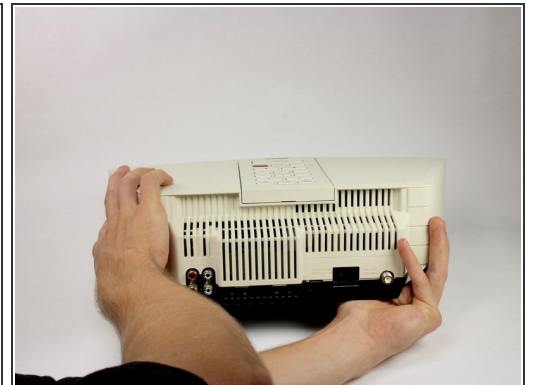
- [Phillips #2 Screwdriver](#) (1)
 - [Spudger](#) (1)
-

Step 1 — Base



- Remove the four 19mm Phillips #2 screws from the base of the device.

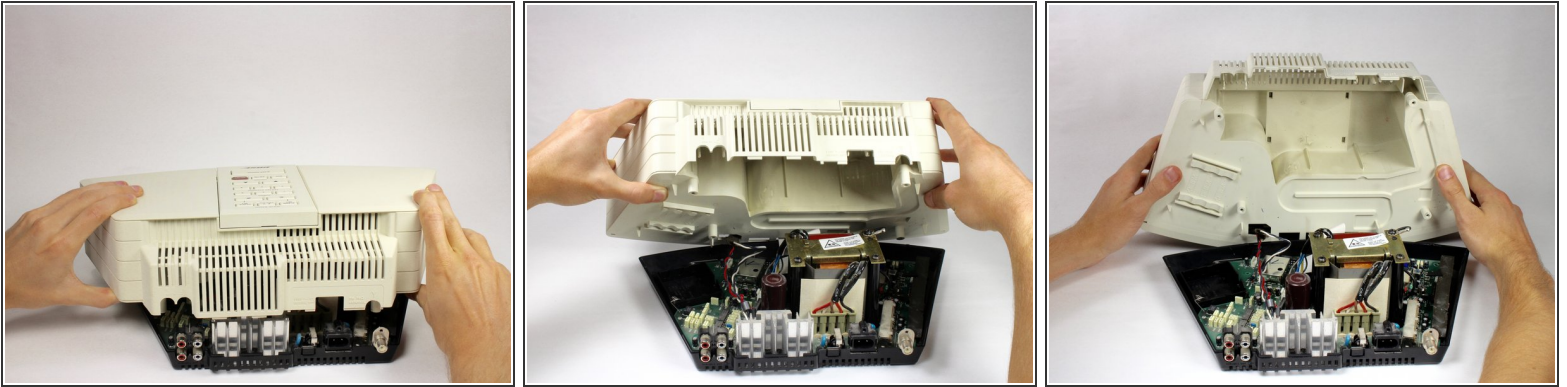
Step 2



- Turn the device over, holding the base on with your thumbs.

⚠ Hold the device tightly to prevent the base from falling off.

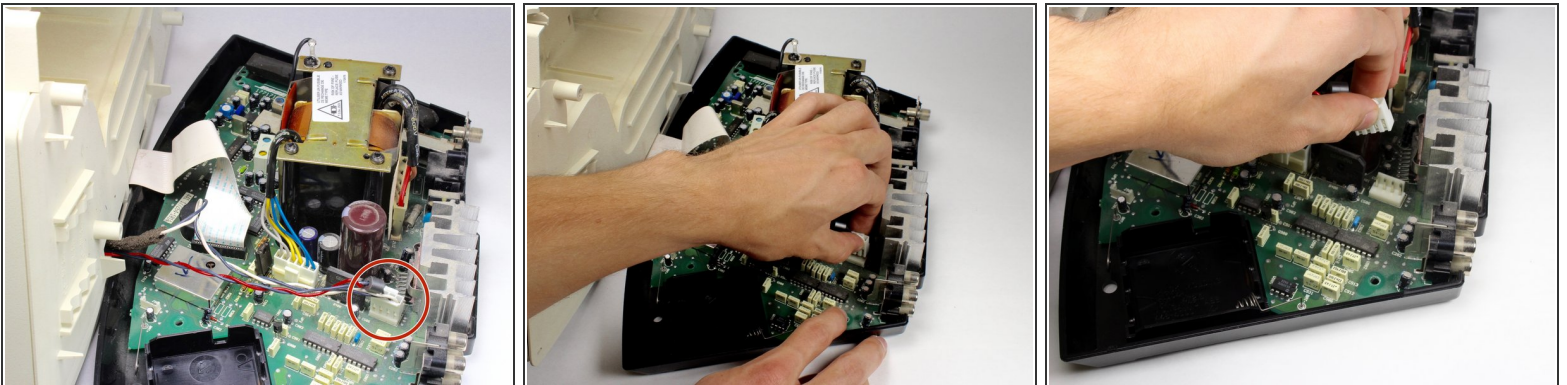
Step 3



- Gently lift the top off of the device.

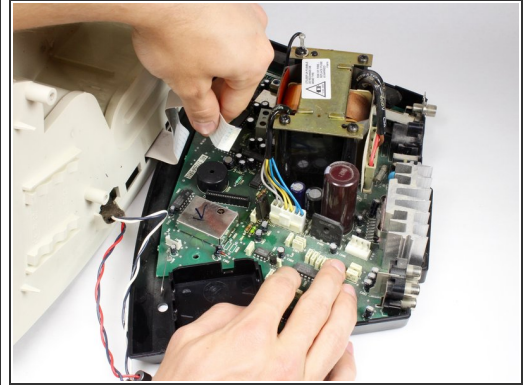
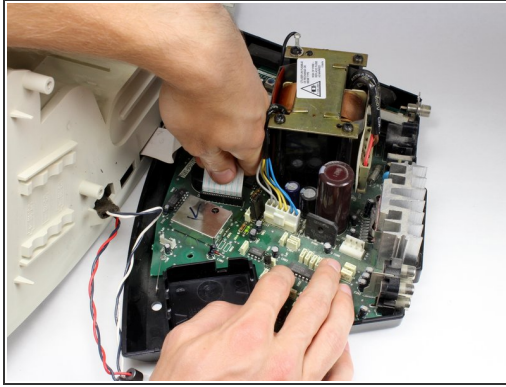
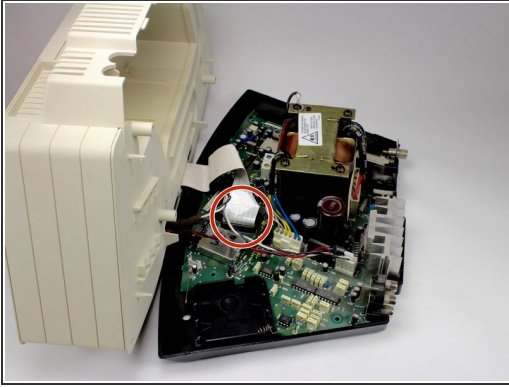
⚠ Lift in the direction shown to avoid damaging the wires connecting the top and base of the device.

Step 4



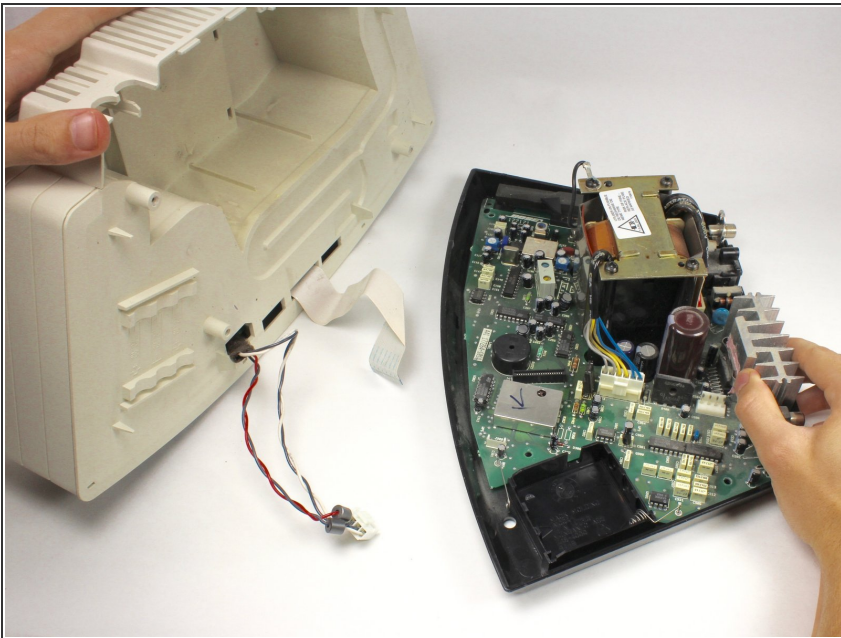
- Pinch and unplug the white connector from the device.

Step 5



- Gently pinch and pull on the white ribbon cable to disconnect it from the base.

Step 6



- The base should now be completely detached from the device.

Step 7 — Front Grill



- Wedge the spudger between the top and front panel on the right side of the device.
- Push down on the spudger, lifting the front panel away from the top panel until it pops out of the right side.
- Repeat for the left side of the device.

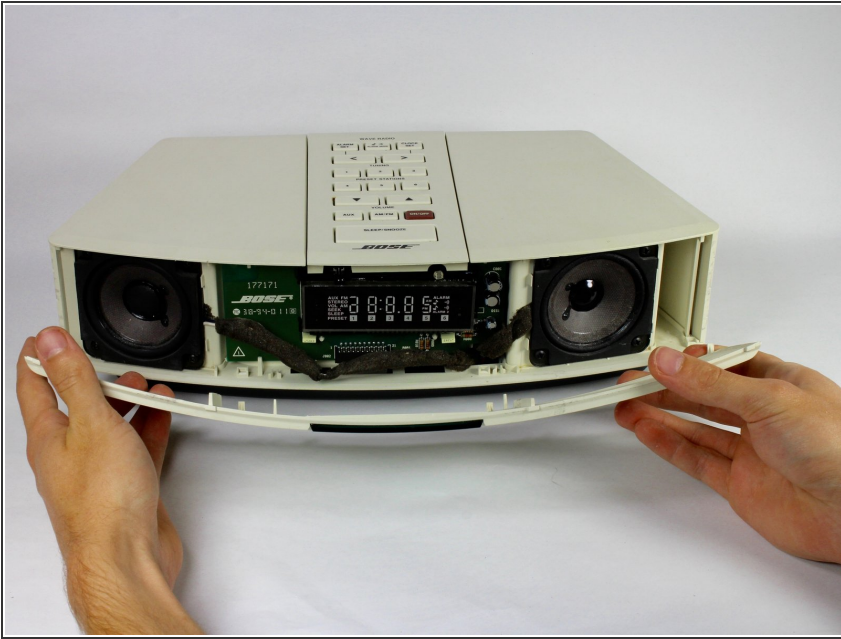
⚠ Too much pressure may break the panel, but it should flex slightly before it pops out.

Step 8



- Once the panel is released on the left side, wedge the spudger between the top panel and front grill of the device as shown.
- Apply pressure and move the spudger upward until the front grill pops out.
- Repeat for the right side of the device.

Step 9



- Lift the front grill away from the device.

Step 10 — Button Panel



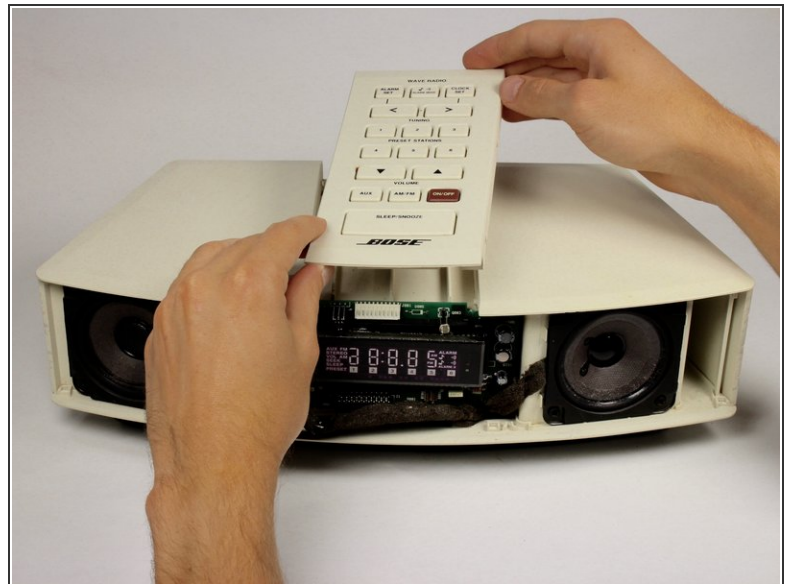
- Turn the device around.
- Wedge the spudger into the larger part of the gap under the back of the device.

Step 11



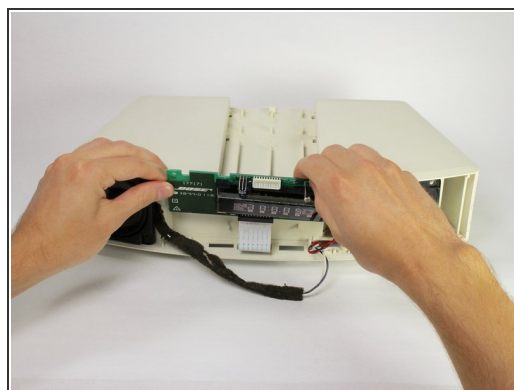
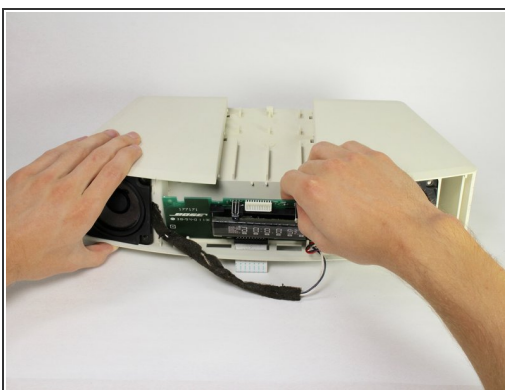
- Move the spudger up until the button panel is loose.
- Push forward on the back of the button panel to disconnect the panel from the top of the device.

Step 12



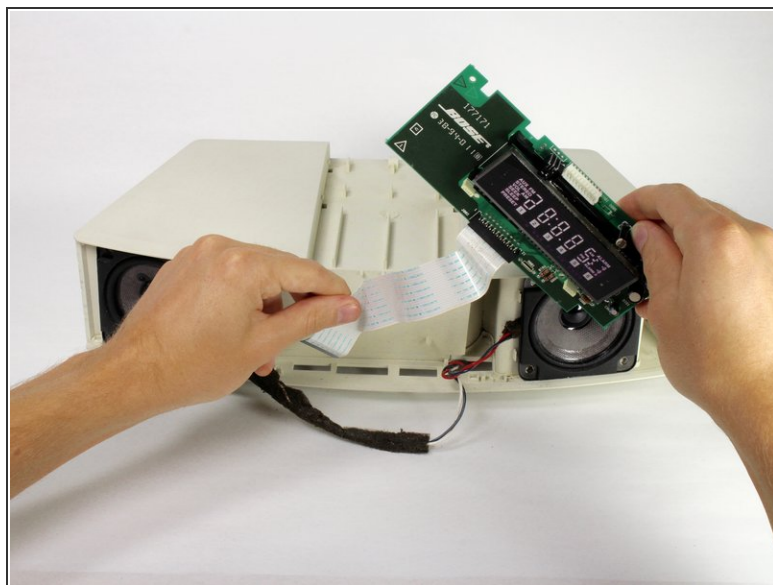
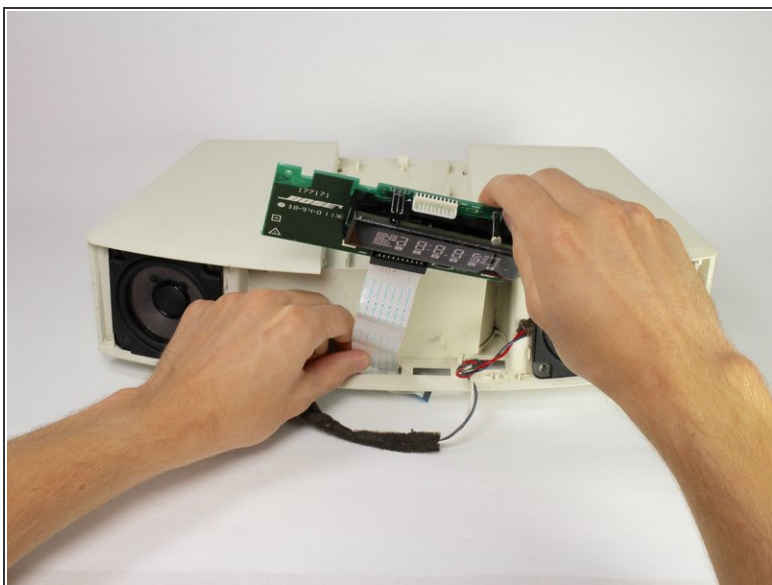
- Turn the device around.
- Pull the button panel forward with one hand and push the screen assembly into the device with the other to disconnect the button panel.

Step 13 — Screen



- Gently pull the top of the screen assembly away from the device.

Step 14



- Lift the screen assembly upward and pull the white wire strip out of the device.

To reassemble your device, follow these instructions in reverse order.