



MSI GE72 6QF Apache Pro Battery Replacement

This guide shows how to locate and remove the battery of an MSI GE72 6QF Apache Pro for possible replacement.

Written By: Hovik Aklyan



INTRODUCTION

This guide shows how to locate and remove the battery of a MSI GE72 6QF Apache Pro for possible replacement.



TOOLS:

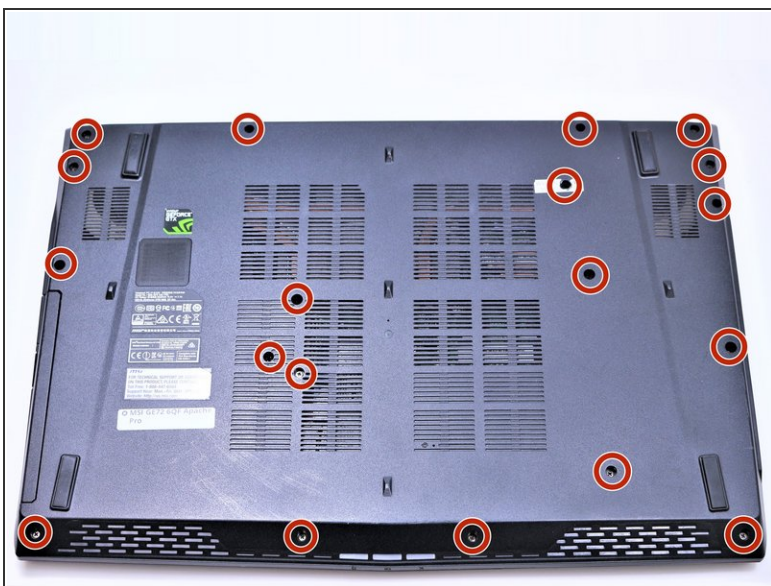
- [Phillips #1 Screwdriver](#) (1)



PARTS:

- [MSI BTY-M6H Replacement Battery](#) (1)

Step 1 — Battery



⚠ Make sure the laptop is off and unplugged (not charging).

- With the laptop closed and upside down, unscrew the nineteen 5.5mm Phillips #1 screws that keep the back cover in place.

Step 2



- Slide the optical drive out of the laptop.

Step 3



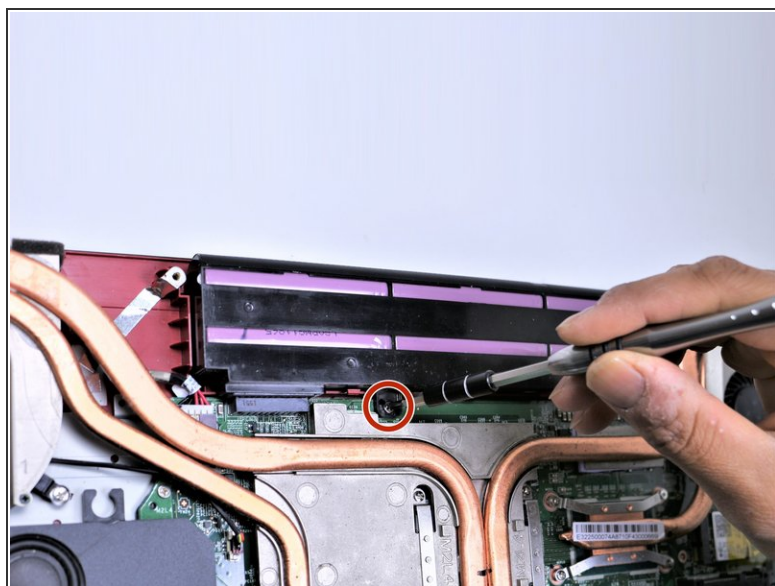
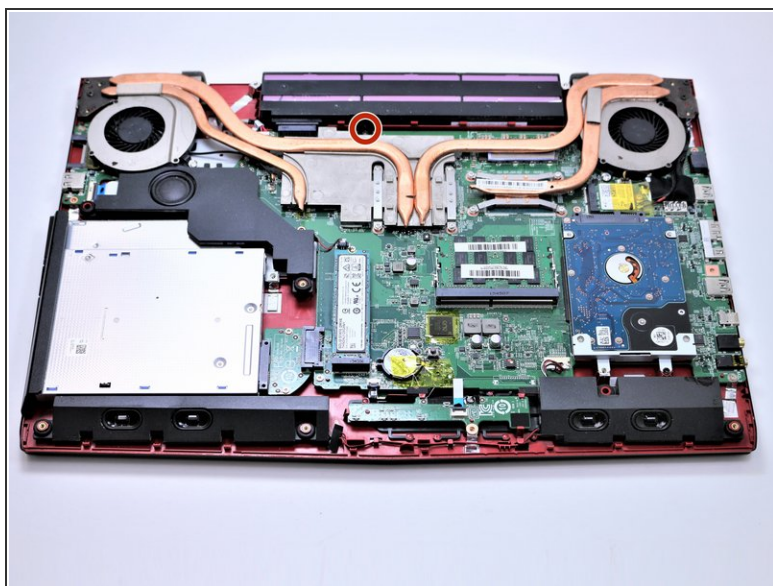
- Use a Phillips screwdriver to remove the three screws along the edge of the optical drive bay.

Step 4



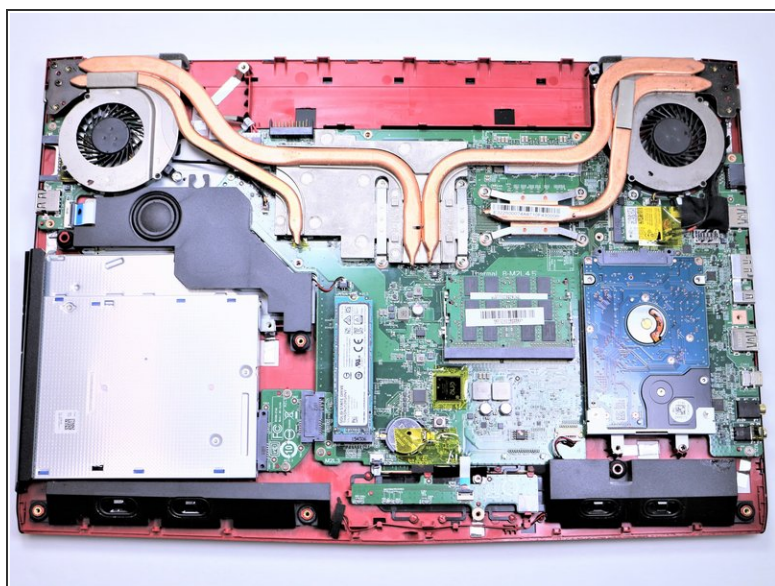
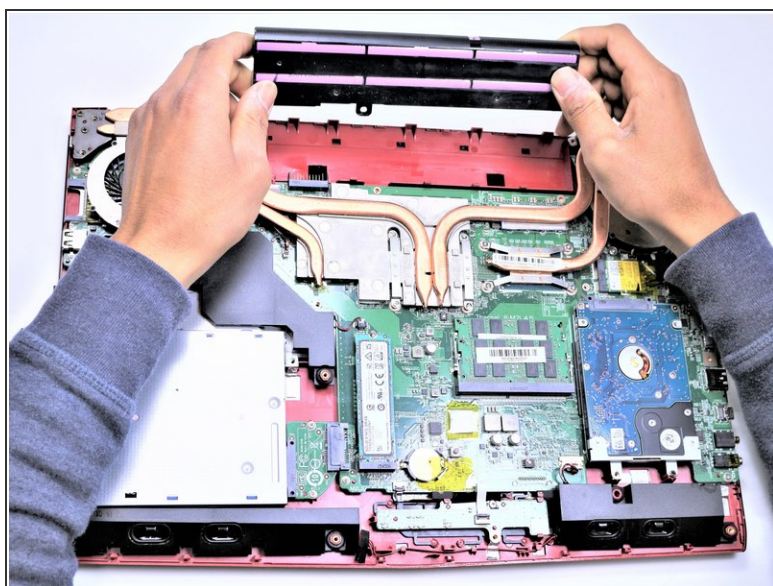
- Using your fingers, gently loosen the edges of all four sides of the back cover.
- Gently pull off the back cover.

Step 5



- Unscrew the single 5.5mm Phillips #1 screw keeping the battery secure.

Step 6



- Grab the battery with your fingers and gently pull it up and away from the rest of the laptop.

To reassemble your device, follow these instructions in reverse order.