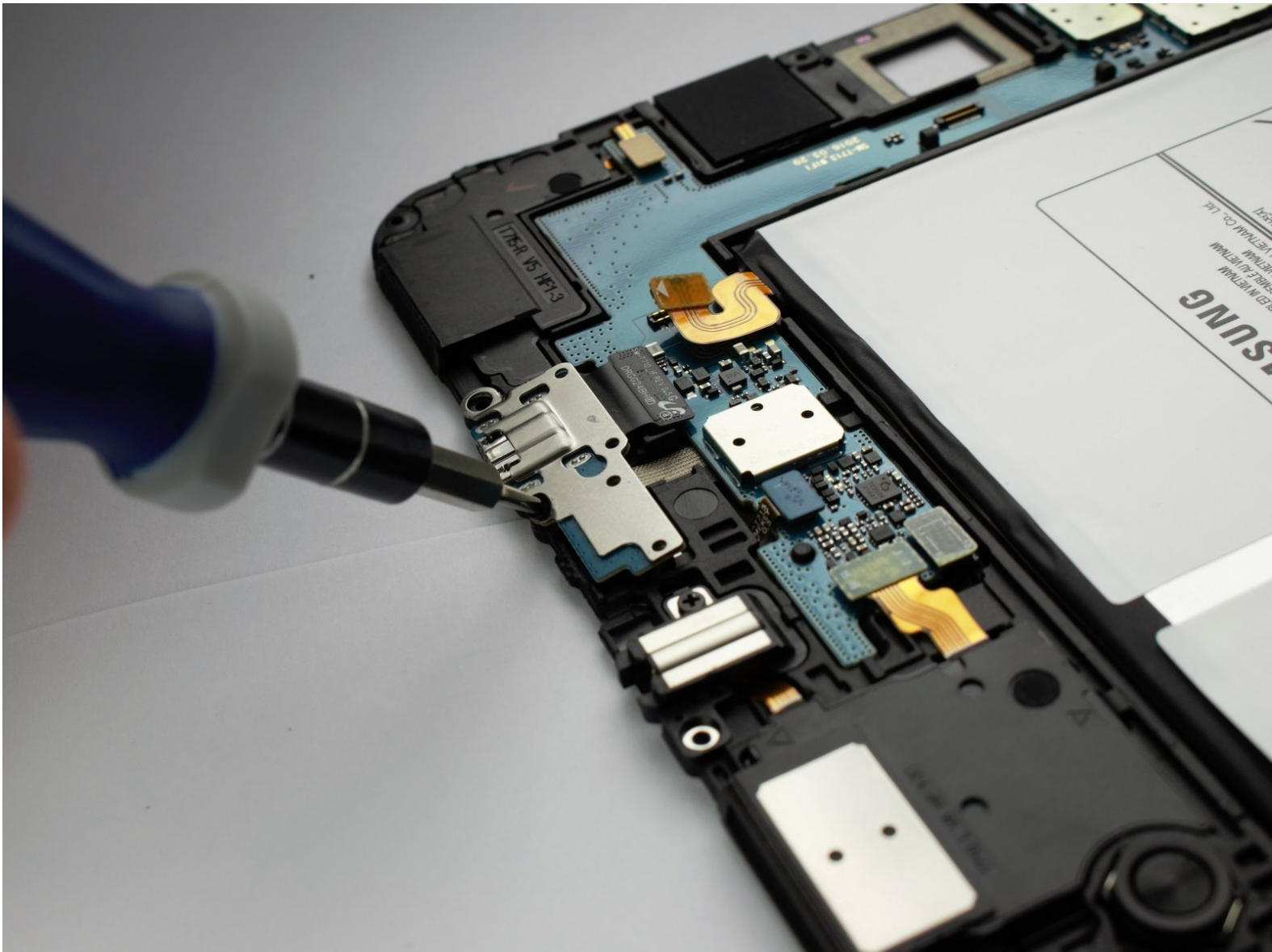




Samsung Galaxy Tab S2 8.0 Charging Port Replacement

If your tablet is not charging or is charging...

Written By: Jonathan Wood



INTRODUCTION

If your tablet is not charging or is charging very slowly, replacing it will fix those problems.



TOOLS:

- [Suction Handle](#) (1)
- [iFixit iOpener](#) (1)
- [iFixit Opening Picks \(Set of 6\)](#) (1)
- [iFixit Opening Tool](#) (1)



PARTS:

- [Samsung Galaxy Tab S2 8.0 Charging Port Assembly](#) (1)

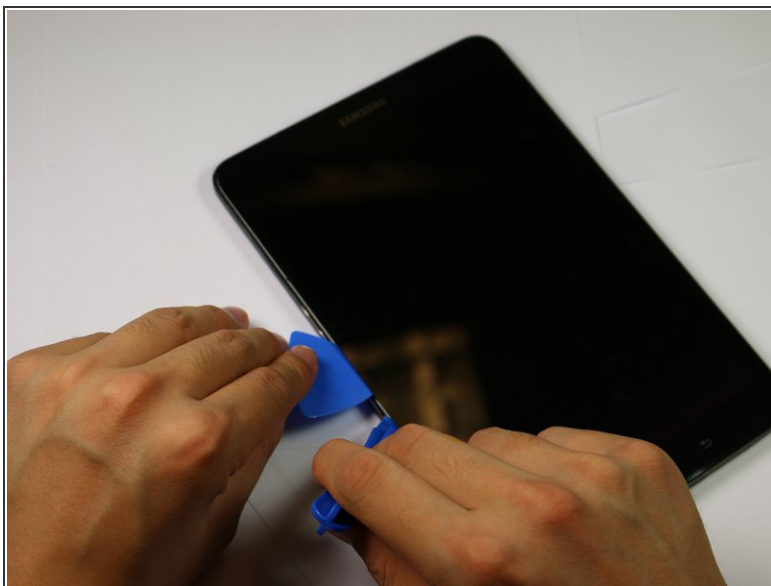
Step 1 — Screen



⚠ Working on a device that is turned on may yield an electric shock. Make sure your device is turned off before working on it.

- Apply heat using an iFixit iOpener or another heating gun in order to weaken the adhesive around the edges of the screen.

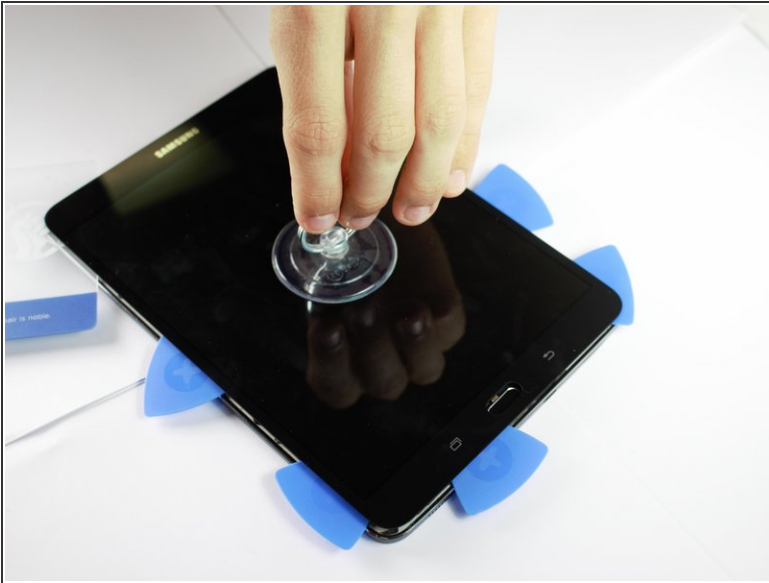
Step 2



- Insert the plastic opening tool into the gap between the screen and tablet in the location where you want to start removing the screen.
- Put an opening pick in the gap created, in between the screen and the panel.
- Repeat all around device, putting 2 picks on top and bottom, and one on each side.

This document was generated on 2023-01-24 01:16:27 AM (MST).

Step 3



- Carefully remove the small suction cup from the corner without moving the screen.
- Place the small suction cup in the center of the screen and lift to remove screen.

⚠ Make sure to separate all glue under the middle parts of the screen as well as the edges - use a thin stiff card to slice through it. Avoid the ribbon cable. Do not attempt to lift the screen until all glue is separated.

⚠ The screen is still connected to the rest of the device by a cable, so don't pull the screen up too quickly.

Step 4



- Place the plastic opening tool underneath the ribbon cable connecting the screen to the tablet.
- Carefully lift the plastic opening tool to detach the ribbon from the tablet.

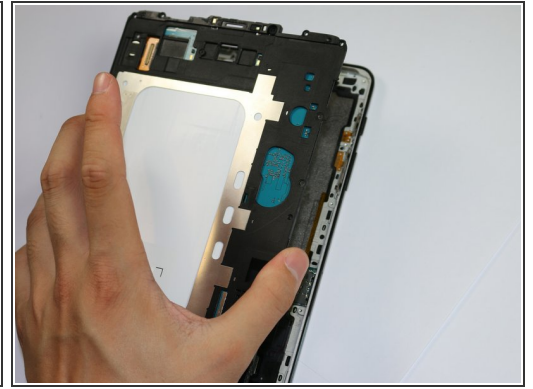
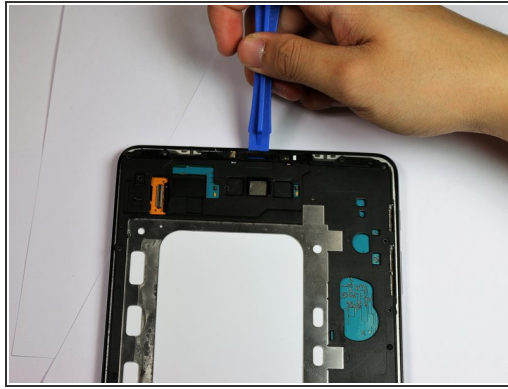
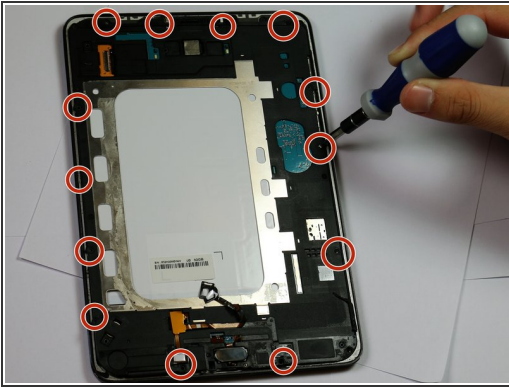
⚠ Make sure to discharge any static electricity by touching a grounded metal object, like a quarter, before touching the inside of the device.

Step 5



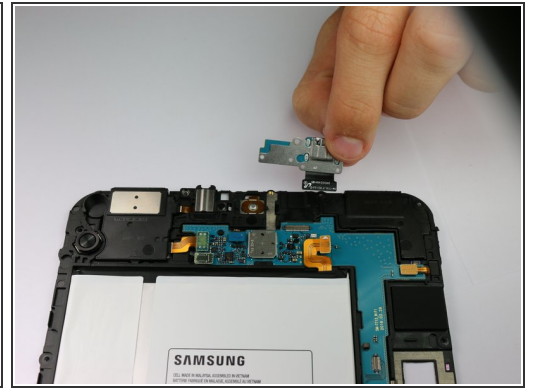
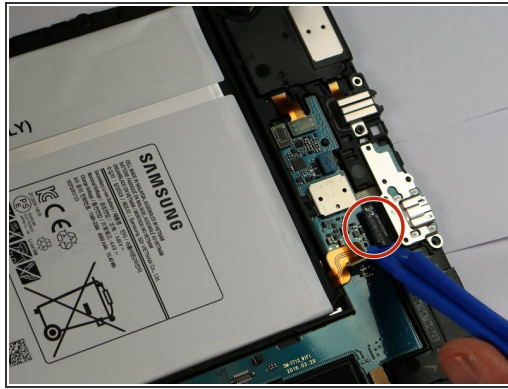
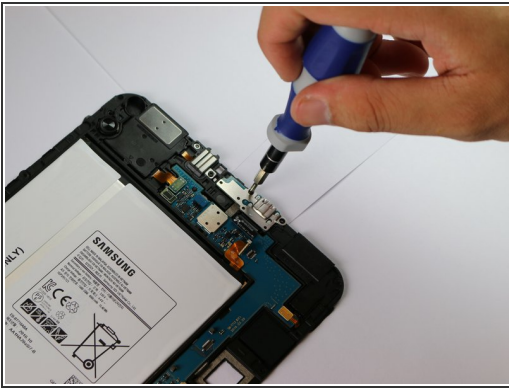
- The screen is now detached from the rest of the tablet.

Step 6 — Charging Port



- Remove the 13 3mm screws from around the edges of the board using a Phillips #1 screwdriver head.
- Carefully lift and remove the motherboard cover.

Step 7



- Use the screwdriver to detach the charging port from the motherboard.
- Use the plastic opening tool to detach the charging port's ribbon from the motherboard.
- Carefully remove the charging port from the motherboard.

To reassemble your device, follow these instructions in reverse order.