



# HP Chromebook 11-v002dx Battery Replacement

Replace your battery when your laptop will not turn on or loses charge abnormally fast.

Written By: Abby Zilvitis



---

## INTRODUCTION

This guide will walk you through easy steps in order to change the battery for your HP Chromebook 11-v002dx.

You may want to try cleaning the battery and its connection points before replacing it entirely, as dust can occasionally accumulate and prevent the battery from functioning at its best capacity, or even at all.



### TOOLS:

- [Phillips #0 Screwdriver](#) (1)
  - [iFixit Opening Tools](#) (1)
-

## Step 1 — Keyboard



**!** Working with your device plugged in may result in electric shock. Be sure to power off your device and unplug it from any power source before proceeding with step one.

- Place your laptop bottom up on your work space.
- Use a Phillips #0 screwdriver to remove the eleven 0.2 mm screws, including the six from underneath the adhesives.

## Step 2



- Using a sharp tool, remove the six adhesives from the bottom of your laptop to expose the screwheads underneath. Two of the pads are small and four are larger.

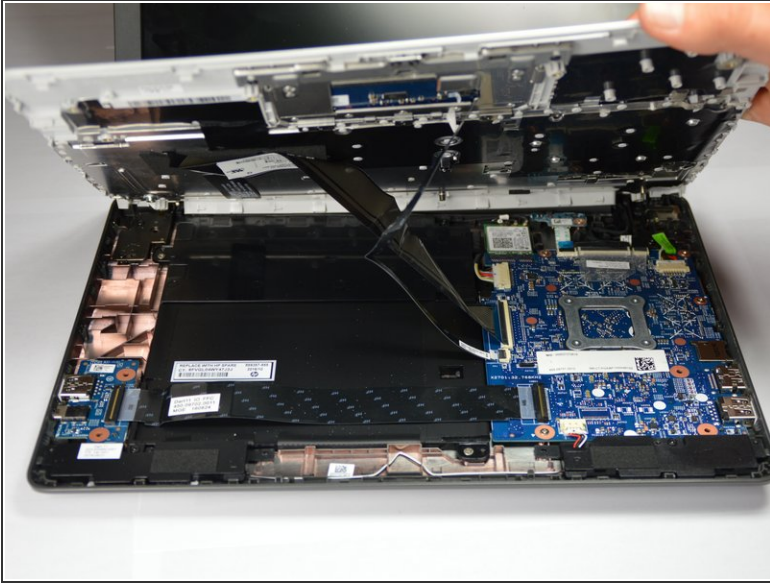
### Step 3



- Use a plastic opening tool to loosen the keyboard face from the device.
- Start prying at one end of the laptop and slowly work your way around so as not to break the keyboard.

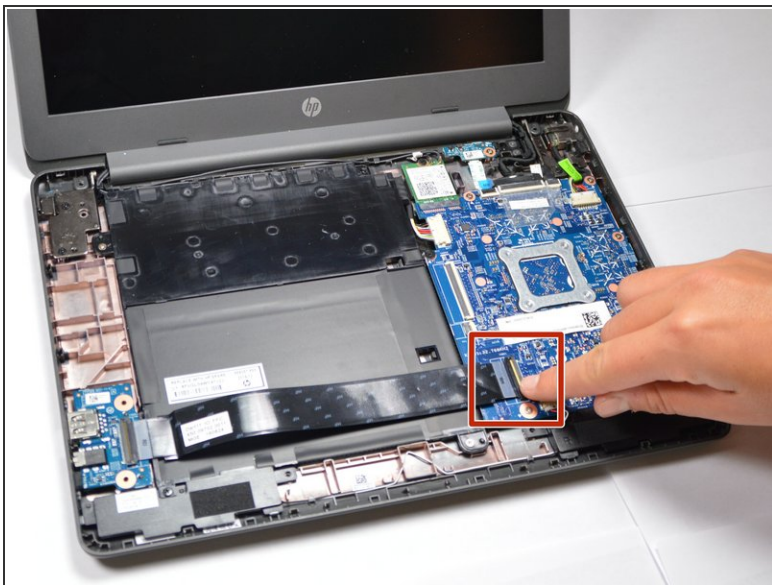


## Step 4



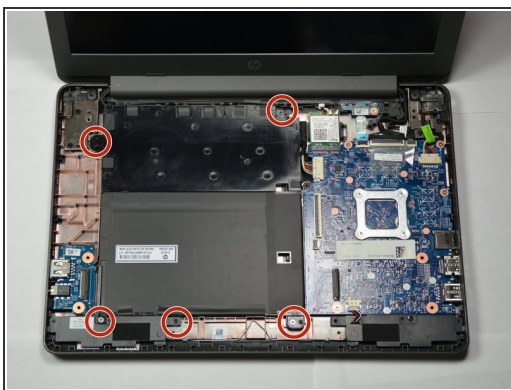
- Lift the keyboard so that the inner workings of the laptop are exposed.
- Gently pull each of the two ribbons connecting the keyboard to the device so that neither ribbon is still connected to the device, only to the keyboard.

## Step 5 — Battery



- Flip up the black tab on the far right of the wire ribbon.
- Gently pull the wire out of the black holder on its right, then out of the left side as well.

## Step 6



- Using your Phillips #0 screwdriver, remove the five 0.2 mm screws from the battery.

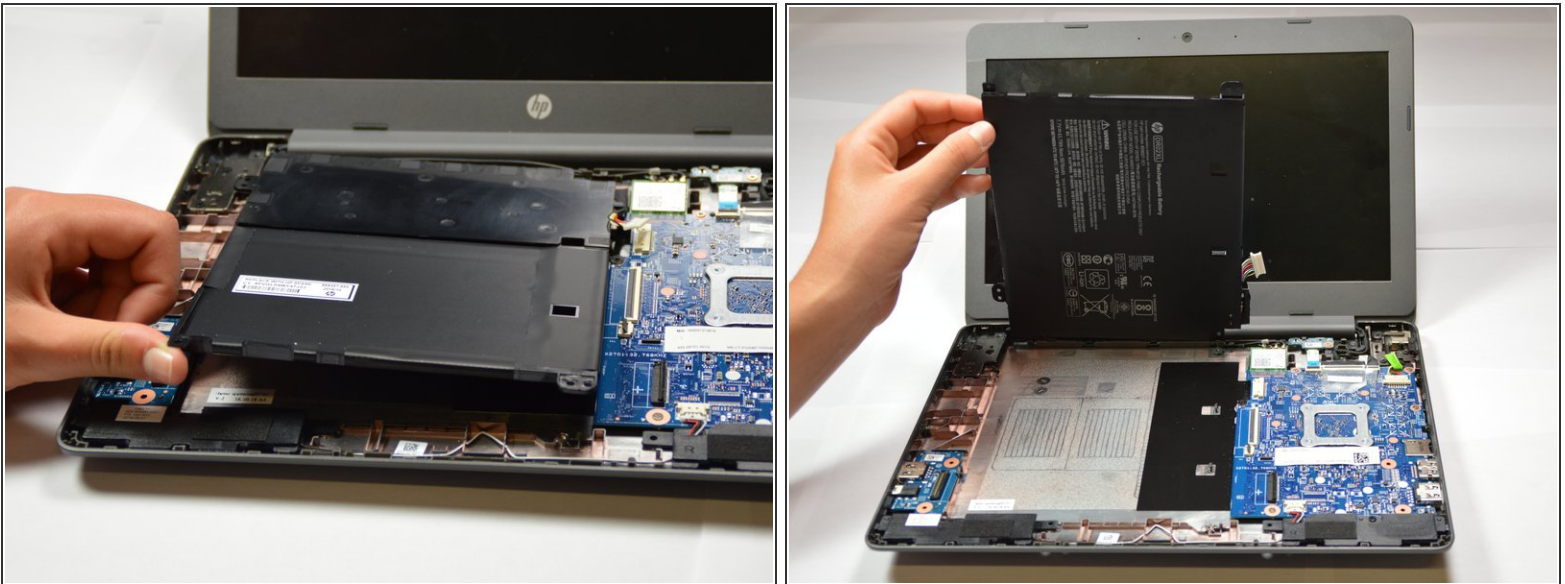


## Step 7



- Pinch the edges of the white tab with the wires coming out of the end.
- Gently remove the white tab with the wires from its holder on the motherboard.

## Step 8



- Gently remove the battery from the laptop completely.
- You can either clean your battery and connection ports or completely replace it.

To reassemble your device, follow these instructions in reverse order.