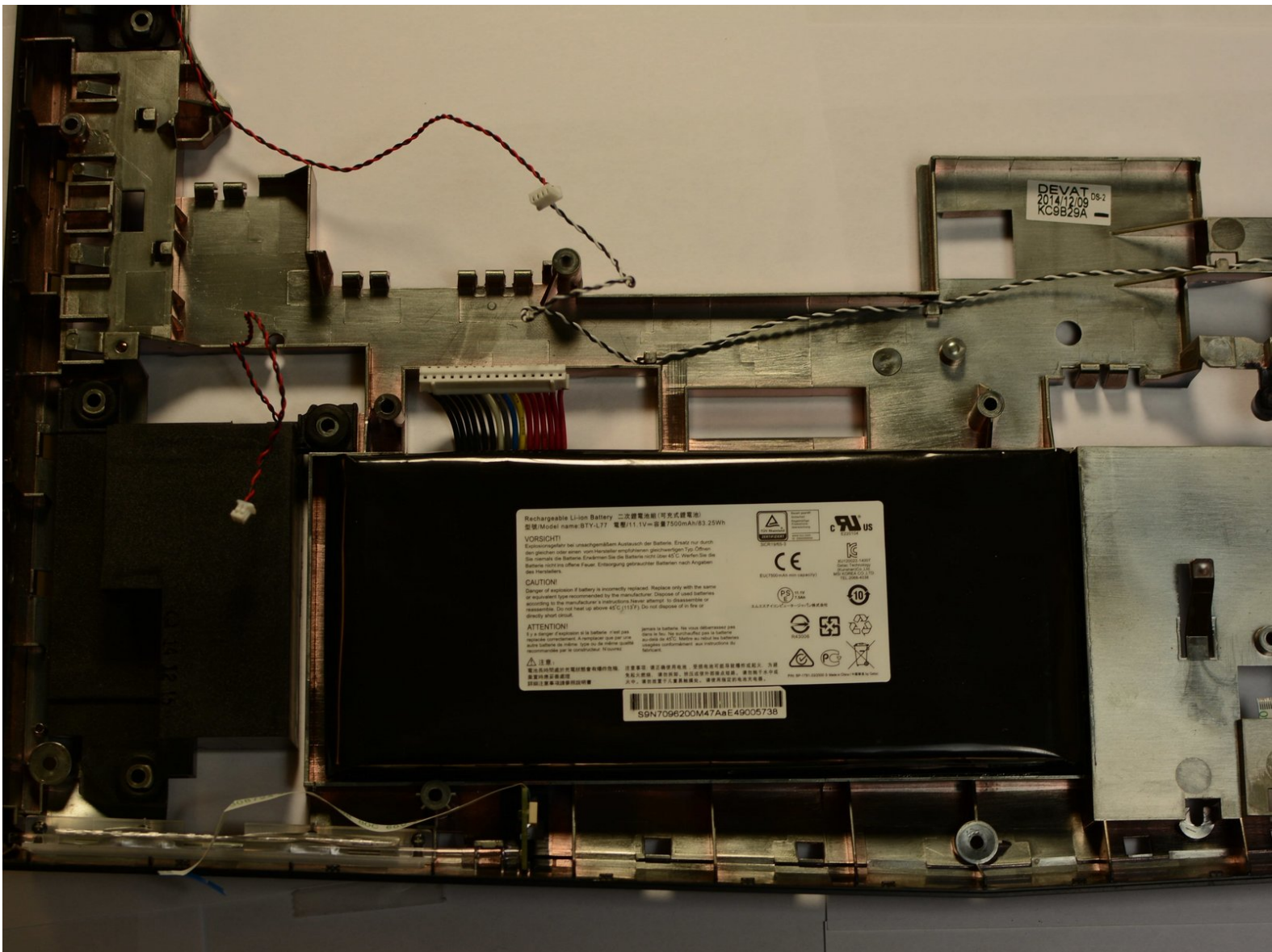




# MSI GT72 2QE Dominator Pro Battery Replacement

How to access, remove, and replace an MSI GT72 2QE Dominator Pro battery.

Written By: Kevin Shipp



# INTRODUCTION

This guide will tell MSI GT72 2QE Dominator Pro users how to replace a defective battery. It is a medium-level process that takes 15-20 minutes to complete.

**For your safety, discharge your battery below 25% before disassembling your device.** This reduces the risk of a dangerous thermal event if the battery is accidentally damaged during the repair. If your battery is swollen, [take appropriate precautions](#).



## TOOLS:

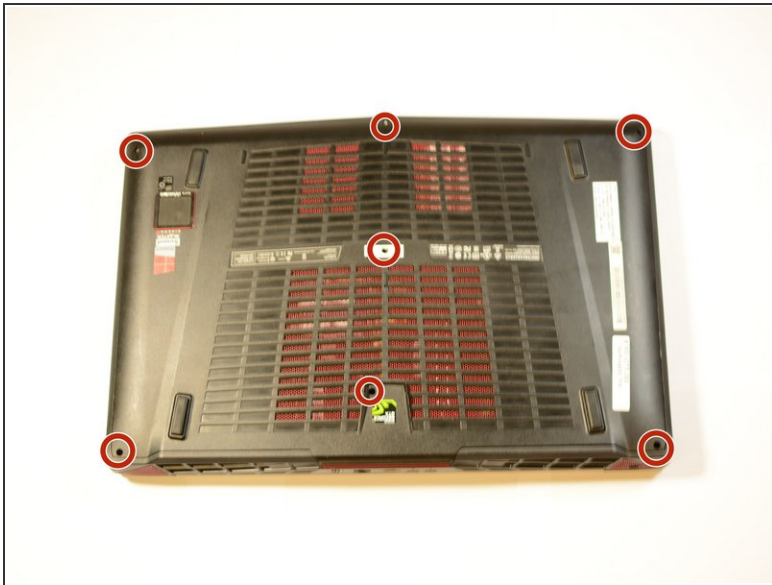
- [Phillips #0 Screwdriver](#) (1)
- [Plastic Cards](#) (1)



## PARTS:

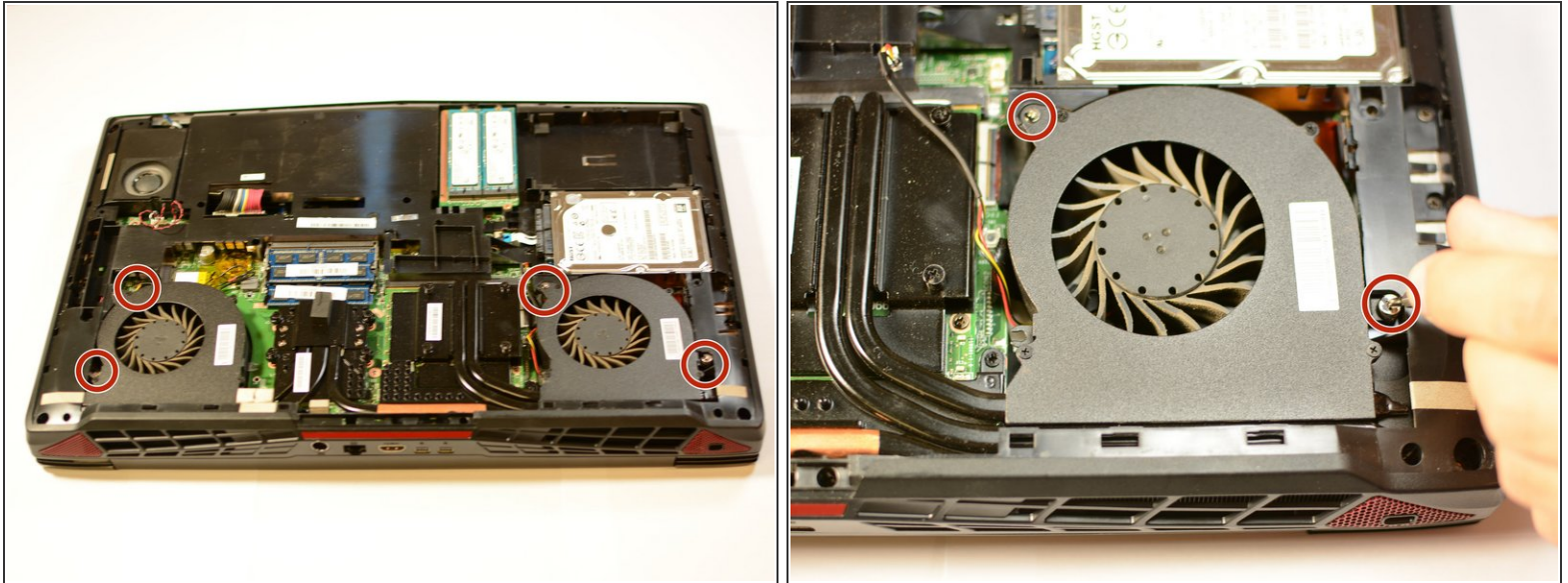
- [MSI BTY-L77 Battery](#) (1)
- [Double Sided Adhesive Tape](#) (1)
- [Precut Adhesive Card](#) (1)

## Step 1 — Battery



- ⓘ Be sure to power off and unplug your device before you begin your repair.
- Use a Phillips screwdriver to remove the seven 6mm screws from the bottom of the laptop.
- Lift and remove the bottom case off of the laptop.

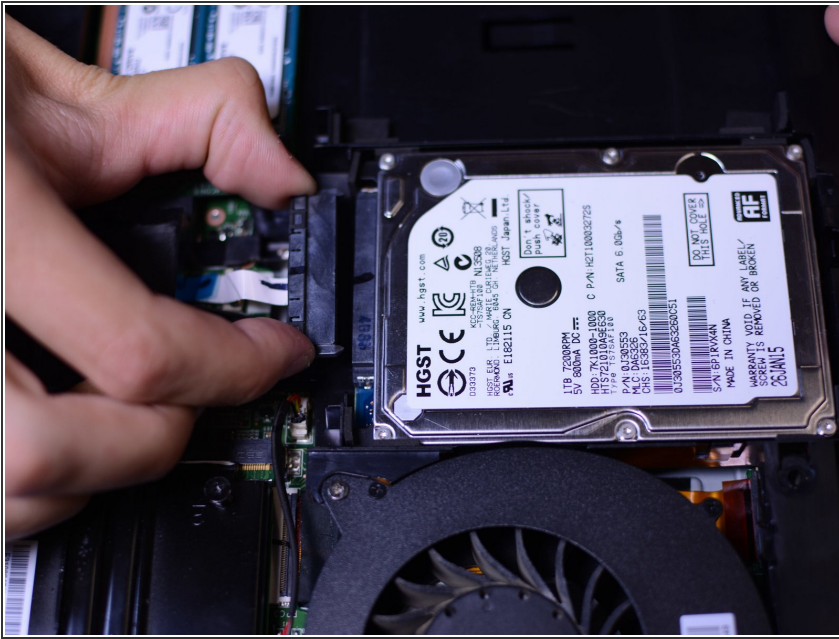
## Step 2



- Use a Phillips screwdriver to remove one 4 mm screw and one 10 mm screw from each fan.
  - ⓘ The 10mm fan screw won't actually come out, as it is attached with rubber piece to fan. Unscrewing it from the lower case will allow for removal, though.
- Unplug both fans by gently disconnecting the fan connector from its motherboard socket. If you have trouble, gently wiggle the connector to loosen it.

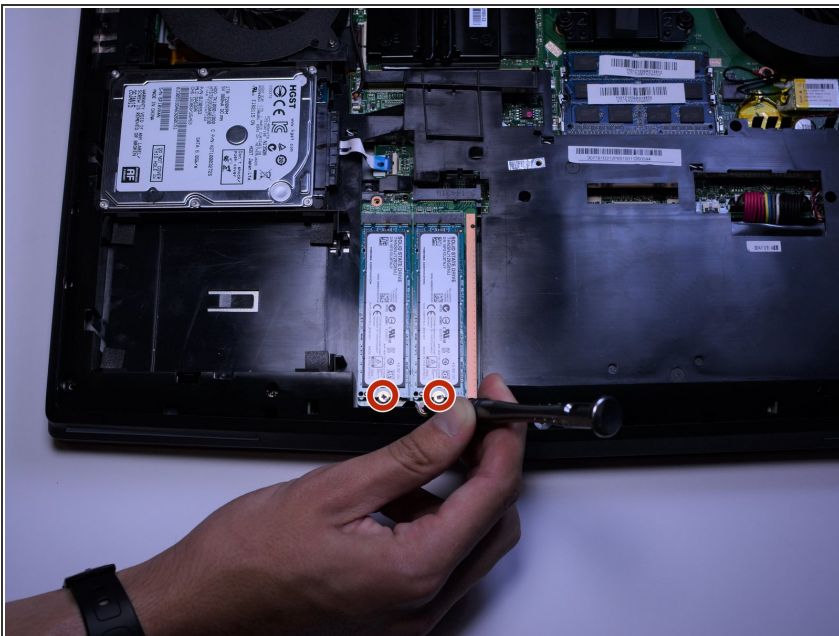


### Step 3



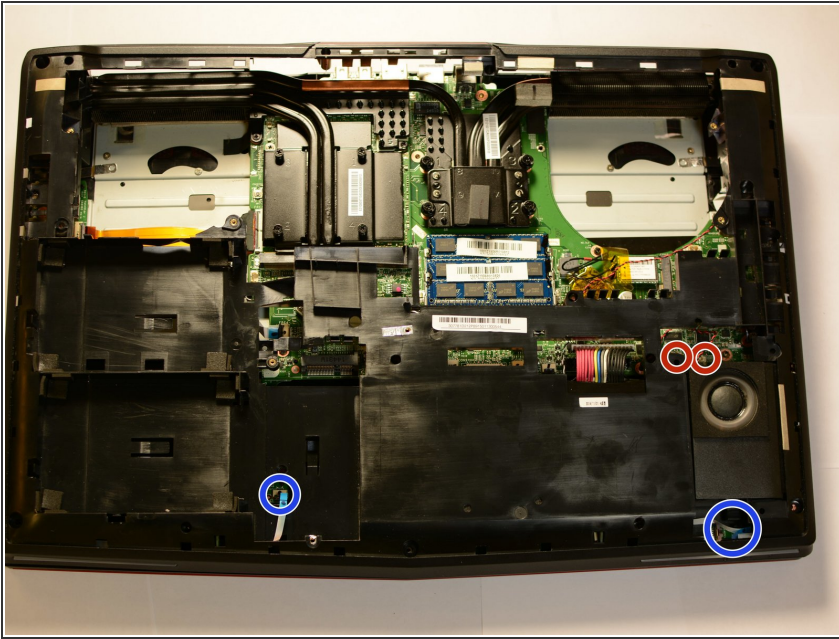
- Unplug the SATA cable and remove the hard drive.
- ⓘ Make sure to pull cable straight out in order to ensure it stays intact.

### Step 4



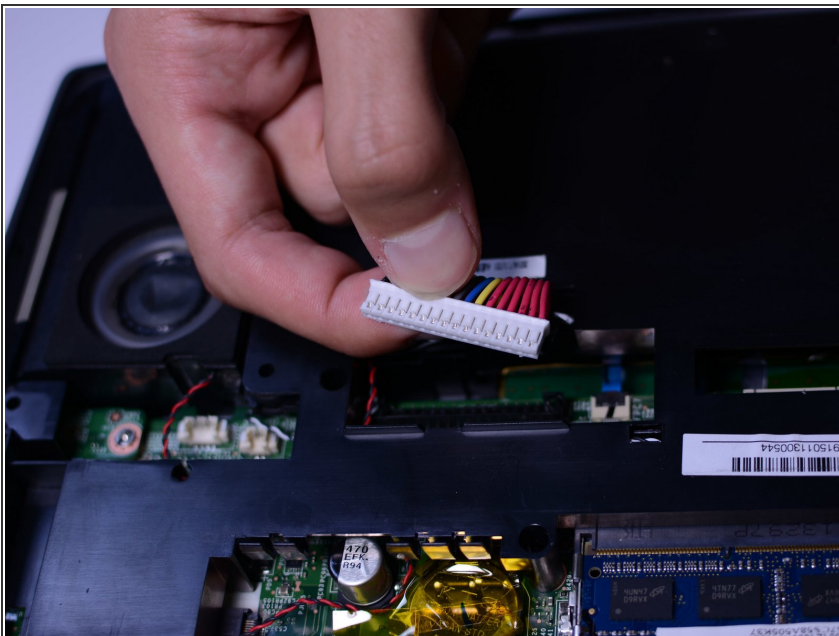
- Remove two 6mm Phillips #0 screws and remove the M.2 SSDs.
- ⓘ Make sure you pull SSD straight out so it doesn't get damaged.

## Step 5



- Unplug both red and black speaker cables. Pull straight out so the connectors aren't damaged.
- Disconnect both these cables carefully by lifting the pressure tabs then gently pulling.

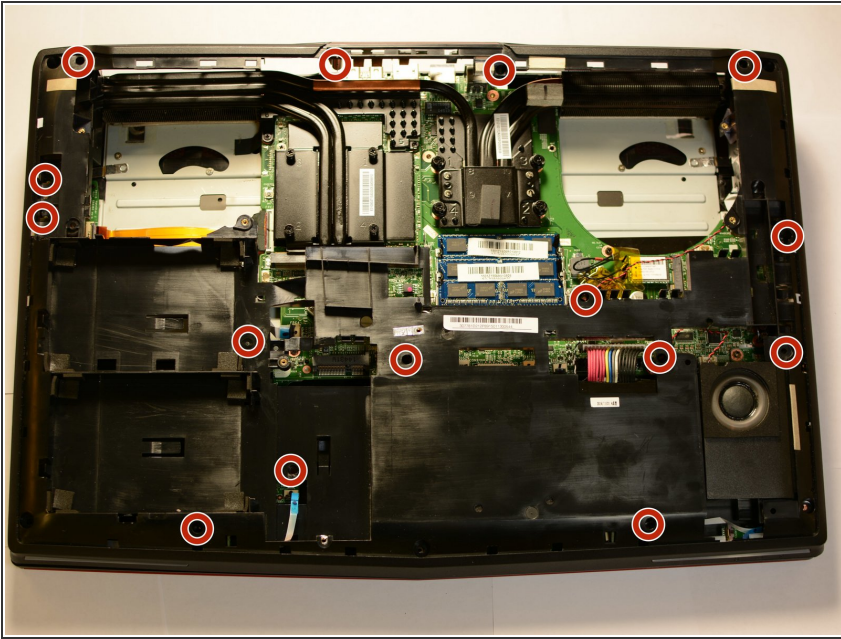
## Step 6



- Unplug the battery cable.
- ⓘ Pull straight up so as not to damage pins.

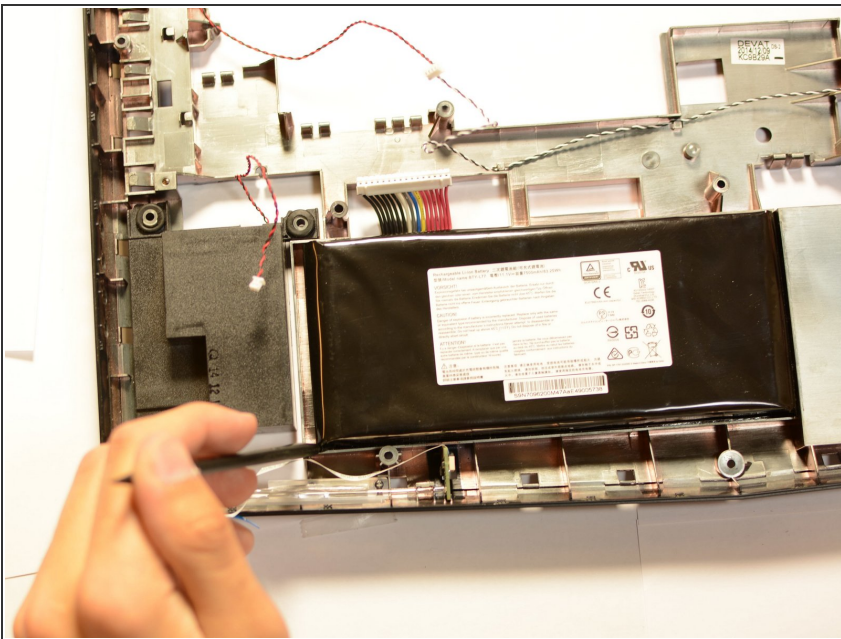


## Step 7



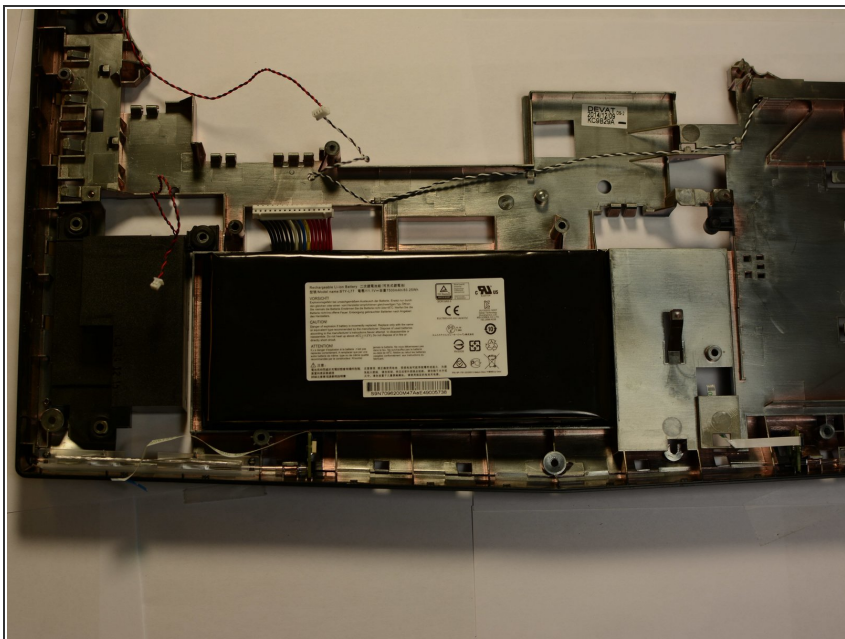
- Remove 15 5mm Phillips #0 screws and remove inner case.
- ⓘ Case may take some force to remove, but don't apply excessive force or you risk breaking the plastic connector tabs.

## Step 8



- Use a card or other flat object to lift and remove the battery from the housing.
- ⚠ Be extremely careful removing the battery. If punctured, hazardous chemicals can be released, or the battery could catch fire or even explode.

## Step 9



- Replace the battery with a 11.1V, 7500mAh Li-ion battery, MSI part number: BTY-L77 or equivalent.

## Step 10 — After step reversal!



- Run MSI Battery Calibration to make sure the firmware can see the new batteries cycle high low voltages.

To reassemble your device, follow these instructions in reverse order.