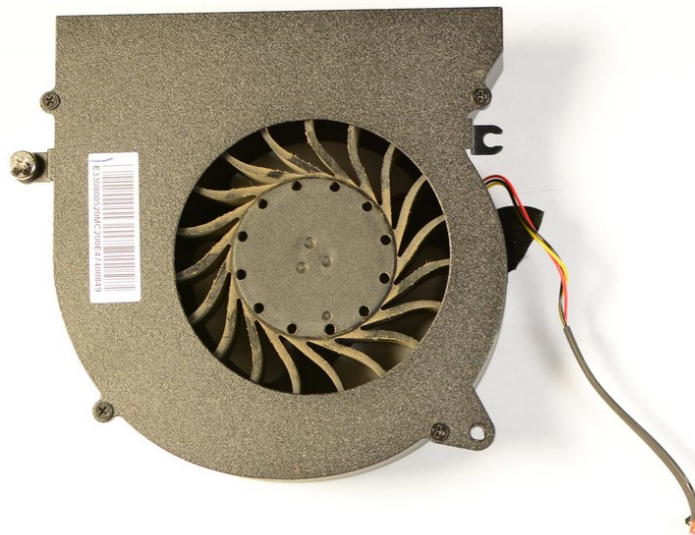




# MSI GT72 2QE Dominator Pro Fans Replacement

Guide to remove both fans from the bottom of the MSI GT72 2QE Dominator Pro.

Written By: Michael Petralia



---

## INTRODUCTION

If you experience any issues with fans not working properly or not functioning at all, this guide will help you remove them from the computer for inspection or replacement.

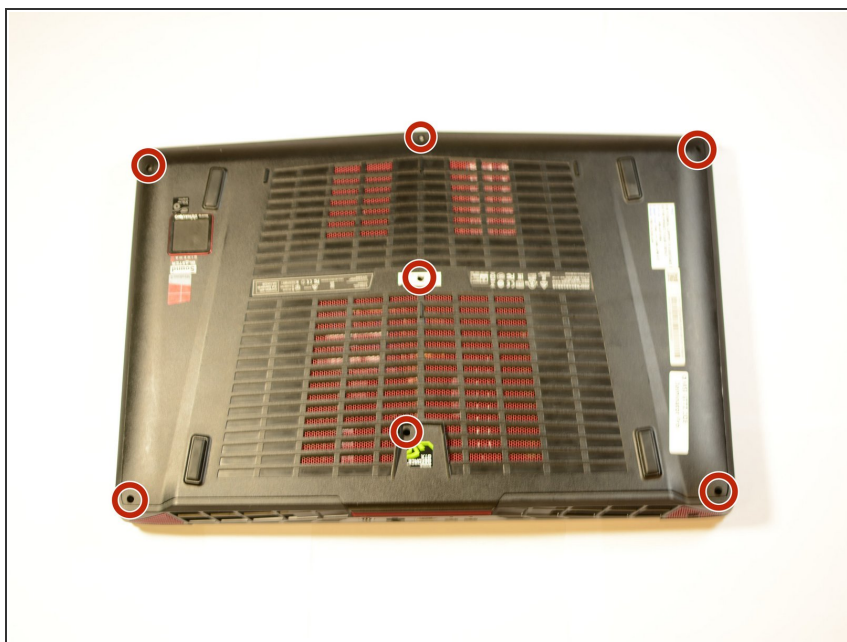
---




### TOOLS:

- [Phillips #0 Screwdriver](#) (1)
-

## Step 1 — Fans



- Remove the seven 6 mm Phillips #00 screws on the back cover of the laptop with the PH0 Bit screwdriver.

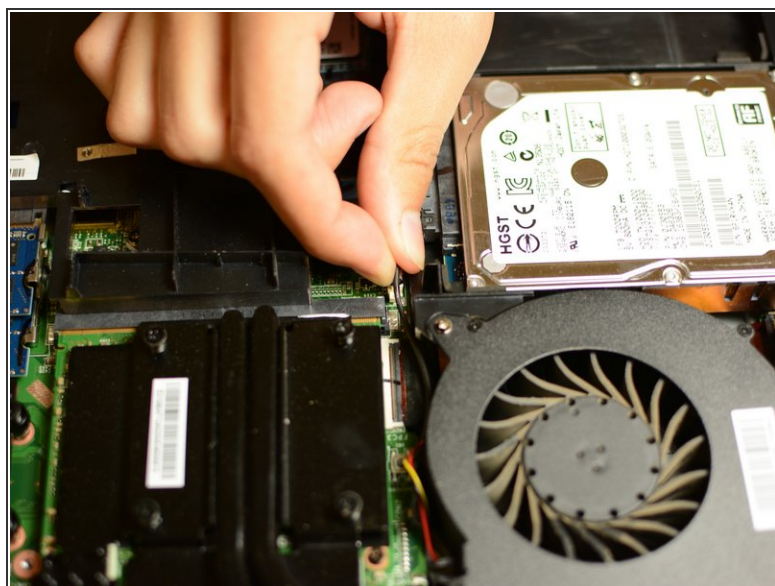
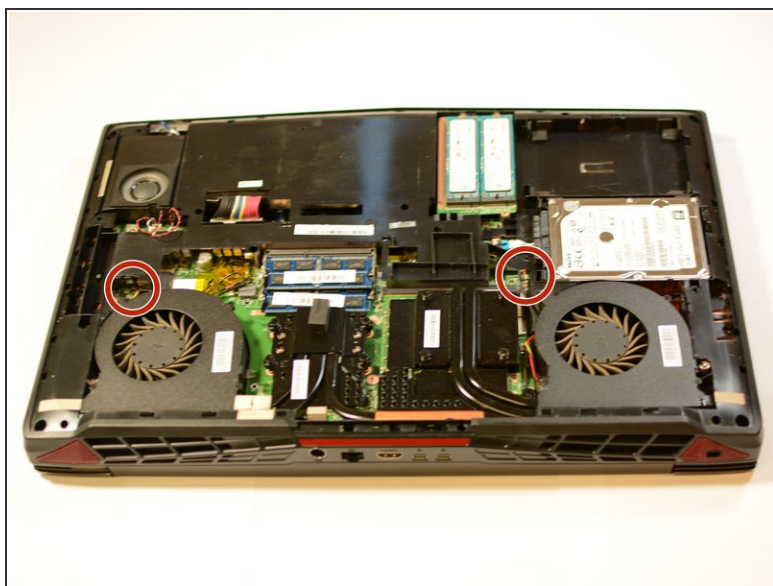
 Every screw in this guide can be removed with the same PH0 Bit screwdriver.

## Step 2



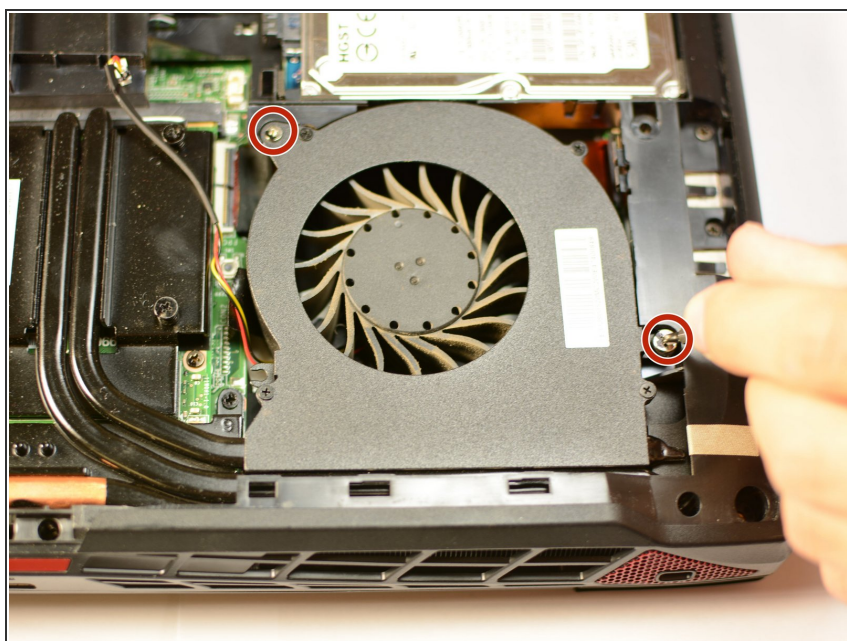
- Lift the back cover off by lifting by the tab on the bottom of the cover as indicated.

### Step 3



- Detach the two indicated wires by pulling upward on them.

### Step 4



- Unscrew a total of four 10mm Philips #00 screws (two screws per fan) as indicated.

To reassemble your device, follow these instructions in reverse order.