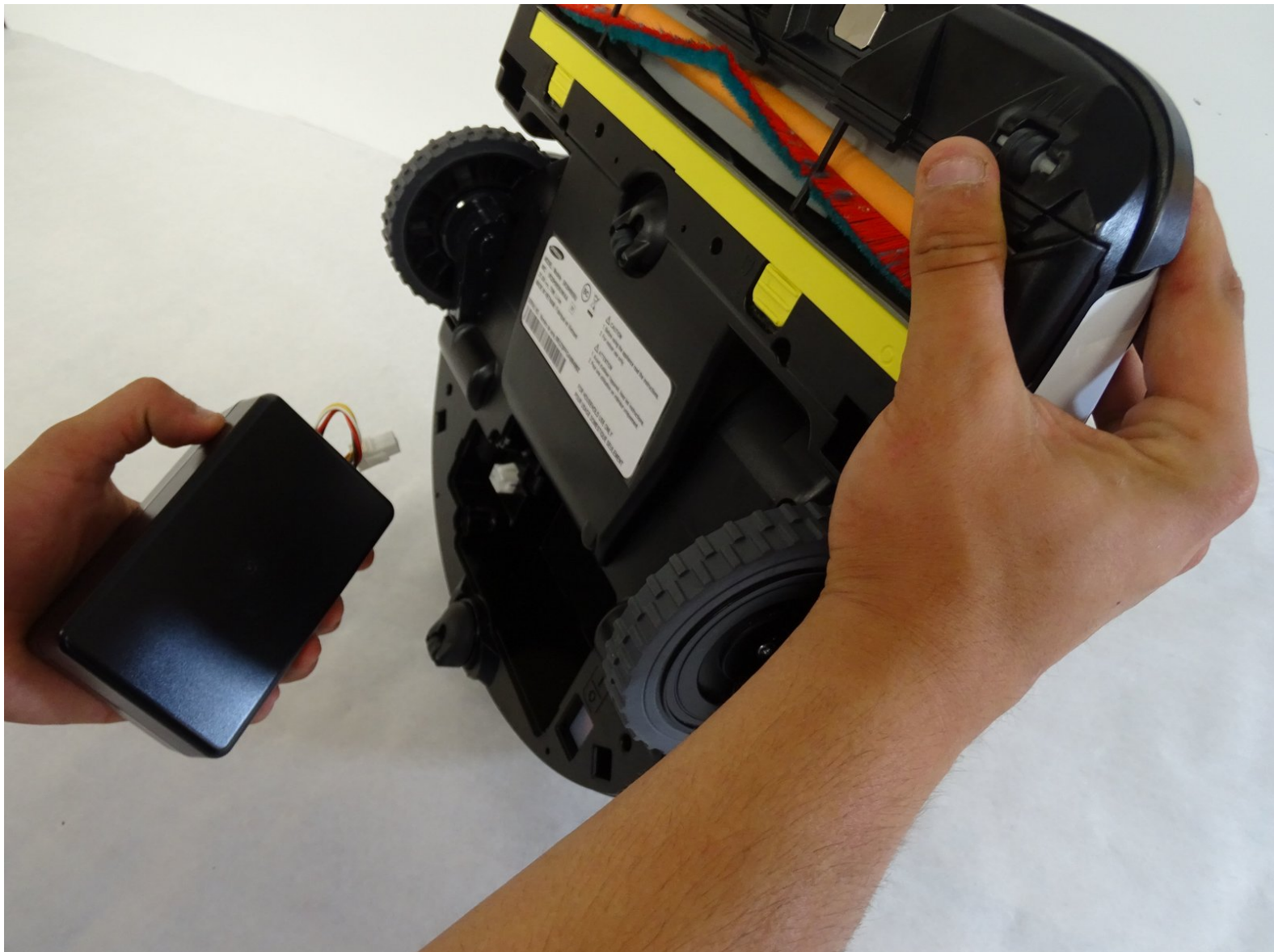




# Samsung Powebot VR9000 Battery Replacement

How to remove and replace the battery for the Samsung Powerbot VR9000.

Written By: Alexandra Jensen



---

## INTRODUCTION

This guide will teach you how to replace the battery of your POWERbot. This can be done to fix your POWERbot's charge retention issues.



### TOOLS:

- [Phillips #1 Screwdriver](#) (1)
-

## Step 1 — Battery



- Turn off the emergency switch located at the bottom right of the POWERbot.

## Step 2



- Unscrew the two 6mm Phillips #1 screws and remove the lid, exposing the battery.



### Step 3



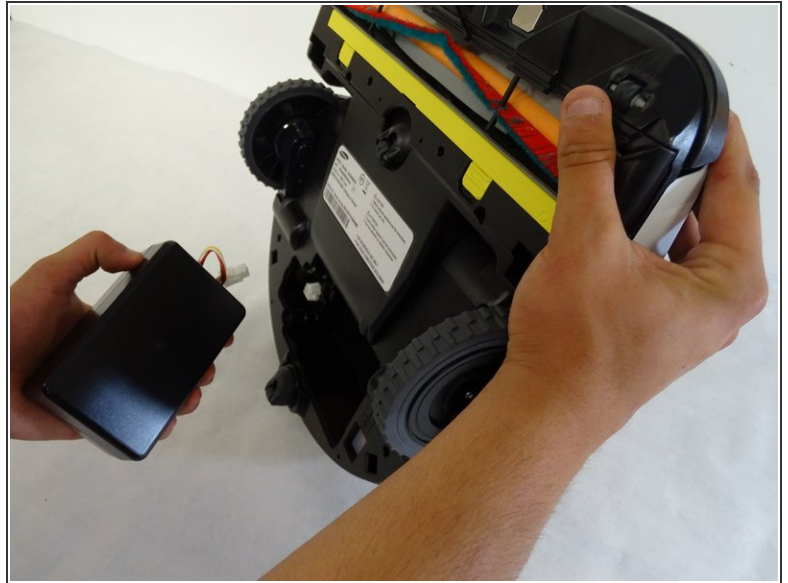
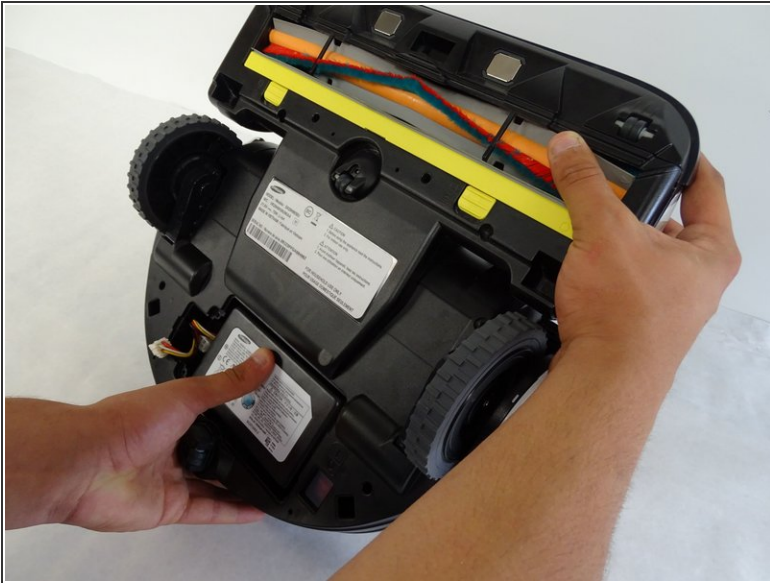
- ## Step 4

## Step 4



- Push the tab inwards to the white box and pull the wires up. This will release the wires from the white box, allowing you to remove the battery.

## Step 5



- Remove the battery by holding the battery in place and partially righting the POWERbot so the battery falls out.

To reassemble your device, follow these instructions in reverse order.