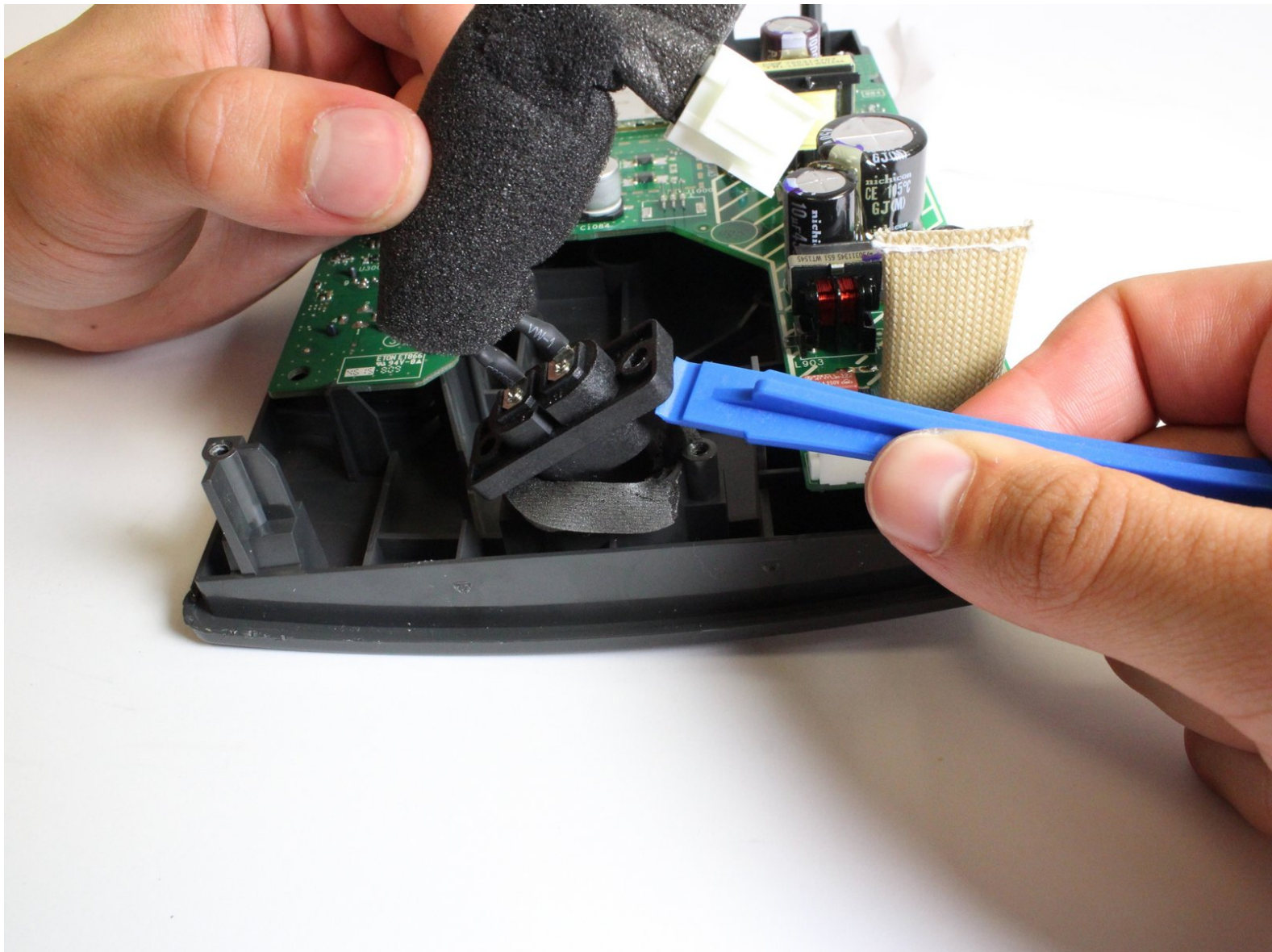




Bose SoundTouch 10 Charging Port Replacement

If your Bose SoundTouch 10 isn't charging properly, the charging port may need to be removed using this guide.

Written By: James Asbury



INTRODUCTION

If your speaker is not receiving power or is charging slowly, make sure that it is not the power cord that is the cause of the problem. After that if the problem persists, the charging port may need to be replaced.

The motherboard in this guide contains capacitors which can hold a charge even when the speaker is powered off. Do not touch the as it may result in a shock.



TOOLS:

- [Phillips #2 Screwdriver](#) (1)
 - [Phillips #000 Screwdriver](#) (1)
 - [ESD Safe Tweezers Blunt Nose](#) (1)
 - [iFixit Opening Tools](#) (1)
 - [Metal Spudger](#) (1)
-

Step 1 — Front Panel



- Turn the speaker over so that the rubber strips along the bottom are facing you.
- Use the iFixit Opening Tool to peel back the rubber strip on the bottom-front edge.

Step 2



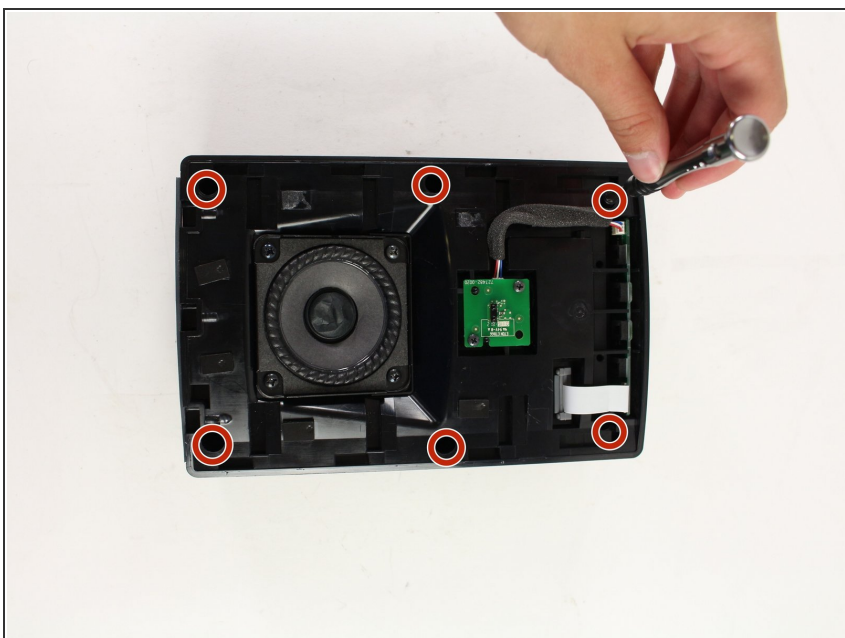
- Use a #2 Phillips screwdriver to remove each of the three 20mm screws on the bottom front edge of the speaker.

Step 3



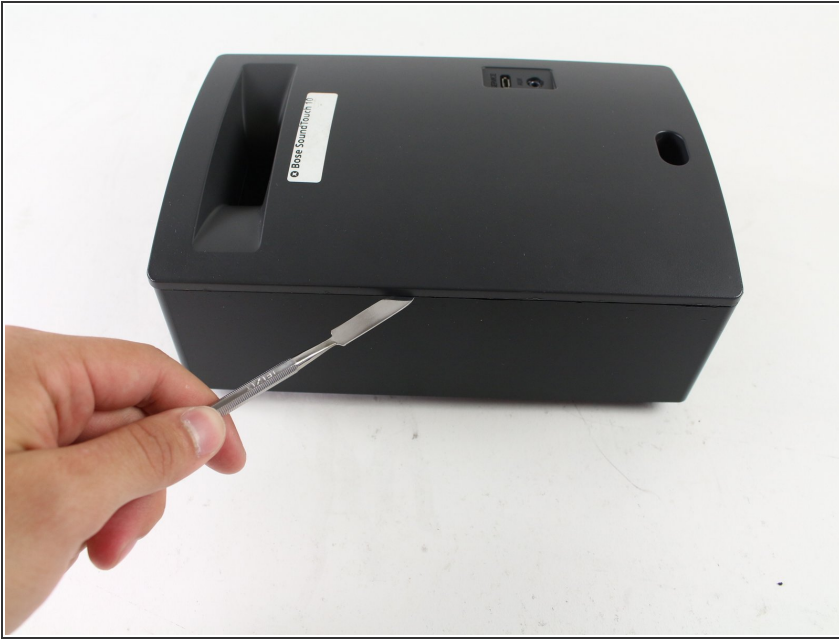
- Slide the front panel with the mesh covering downwards to disconnect it from the SoundTouch 10 body.
- Lift the panel away to reveal the speaker head.

Step 4 — Back panel



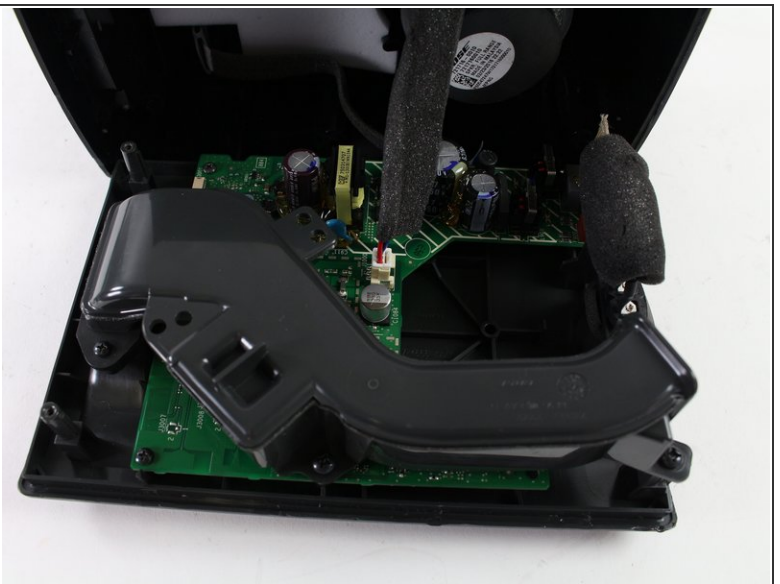
- Use a #2 Phillips screwdriver to remove each of the six 20mm screws located underneath the front panel.

Step 5



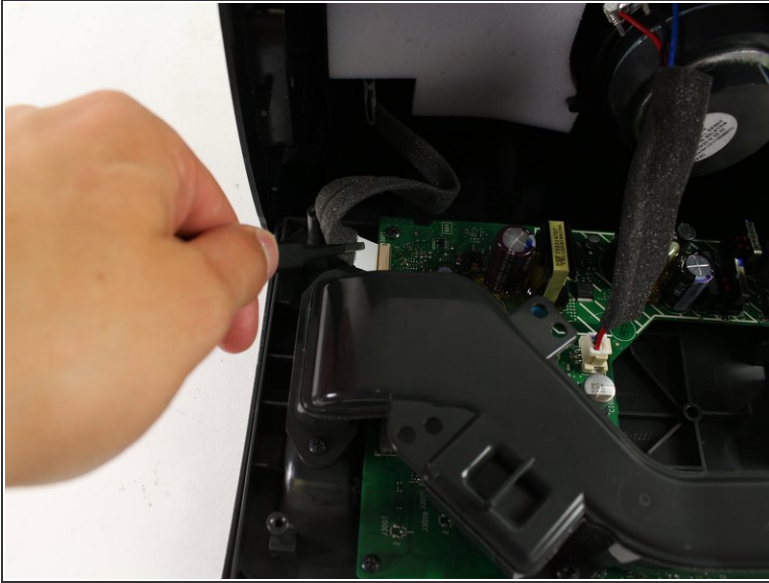
- Flip the speaker onto its back.
- Loosen the adhesive by sliding a Metal Spudger under the edge where the back panel meets the speaker's body.

Step 6



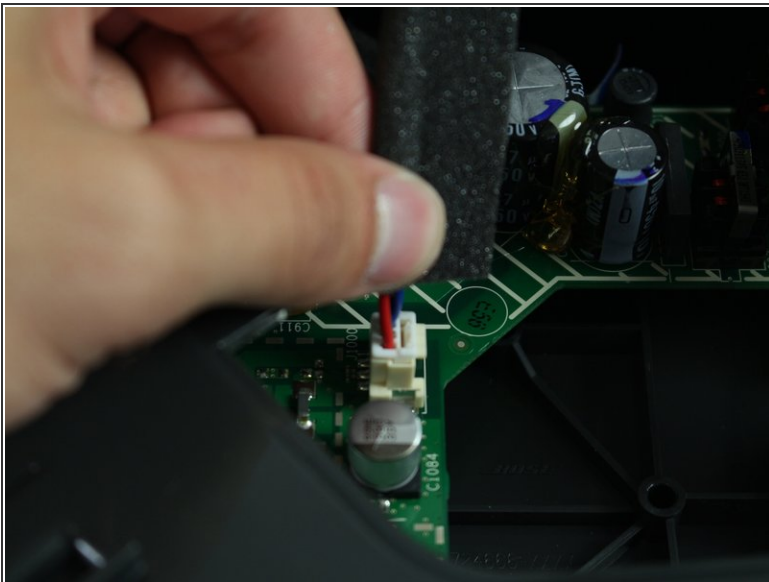
- Use force with an iFixit Plastic Opening Tool to pry the back panel up from the speaker frame.
- ⓘ If the panel does not come free easily, a heat gun may be needed to weaken the adhesive.
- ⓘ Once the panel has been disconnected, it should fall open revealing the motherboard.

Step 7



- Use ESD Safe Tweezers (Blunt Nose) to pull out the wire ribbon at the end of the motherboard.

Step 8



! The motherboard contains capacitors (shown as cylinders in the upper right of the picture) which can hold a charge even when the speaker is powered off. Do not touch them as doing so may result in a shock.

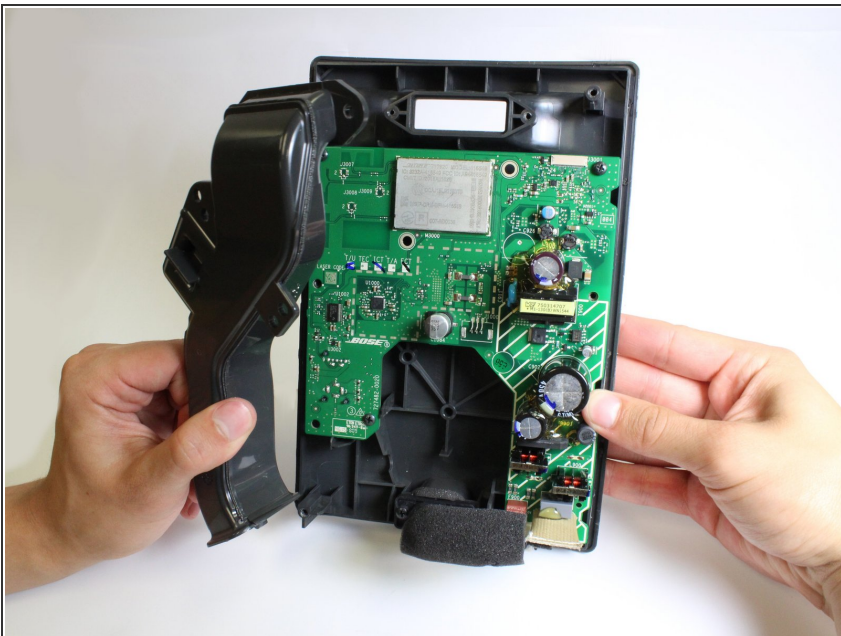
- Pull up on the base of the speaker wire plug to disconnect it from the motherboard.

Step 9 — Bass Port



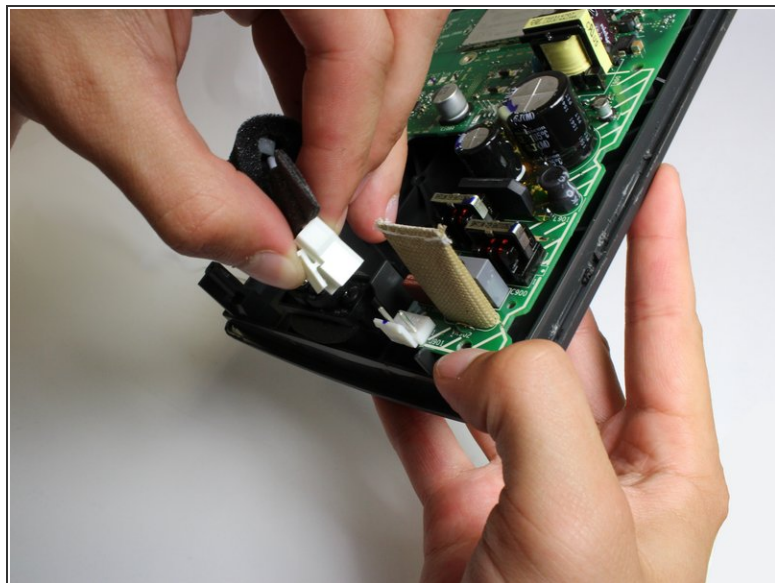
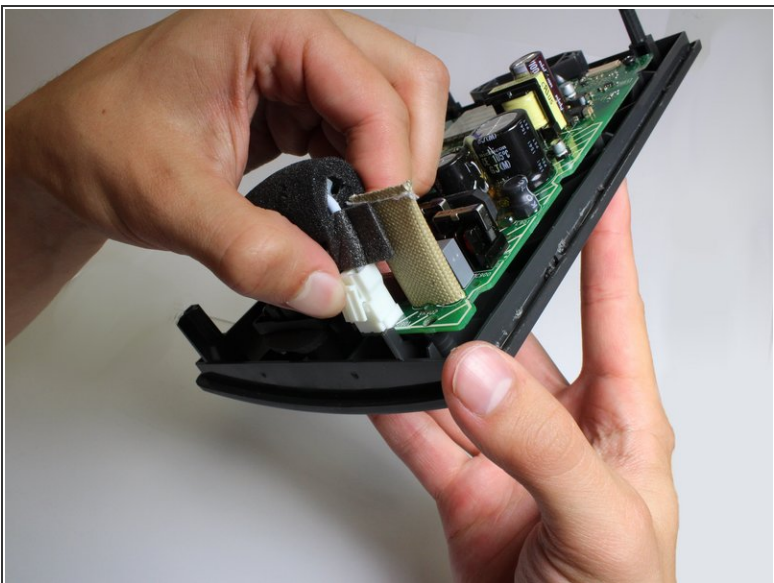
- Use a #0 Phillips screwdriver to remove each of the two 11mm screws attached to the bass port.

Step 10



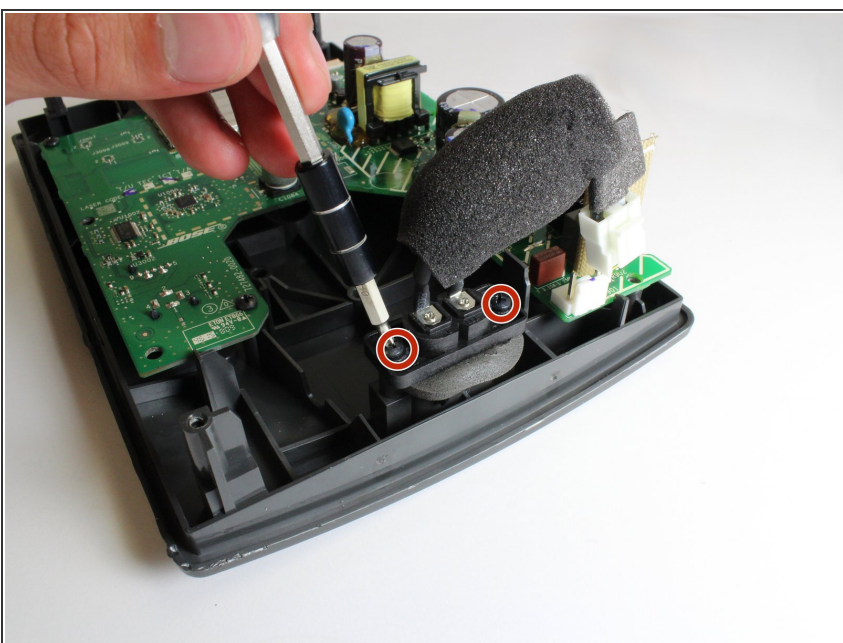
- Lift the bass port away from the motherboard.

Step 11 — Charging Port



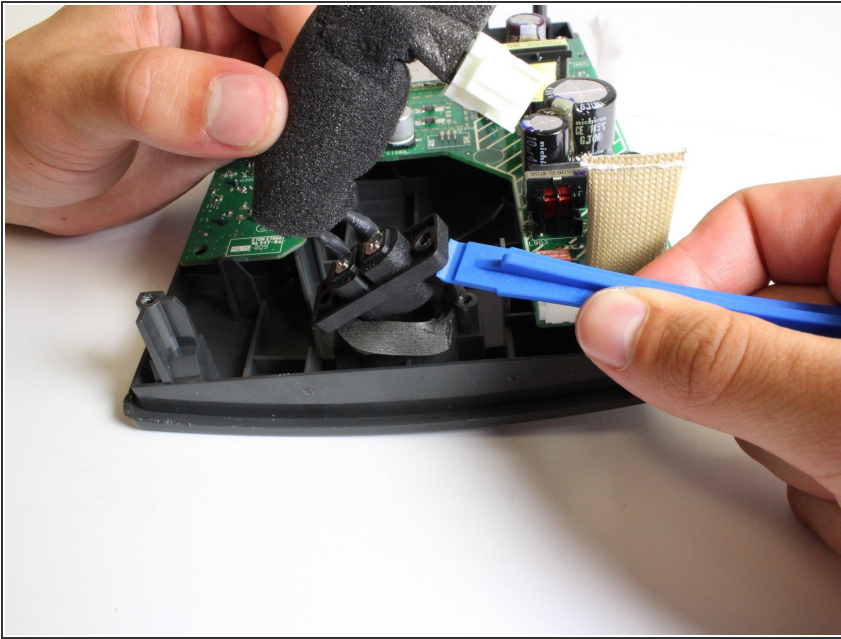
- Pinch the tab on the bottom of the clip connecting the charging port cables to the motherboard.
- Lift upwards to disconnect the clip.

Step 12



- Use a #2 Phillips screwdriver to remove the two 15mm screws from either side of the charging port.

Step 13



- With an iFixit Plastic Opening Tool, pry the speaker port upwards and away from the socket.

To reassemble your device, follow these instructions in reverse order.