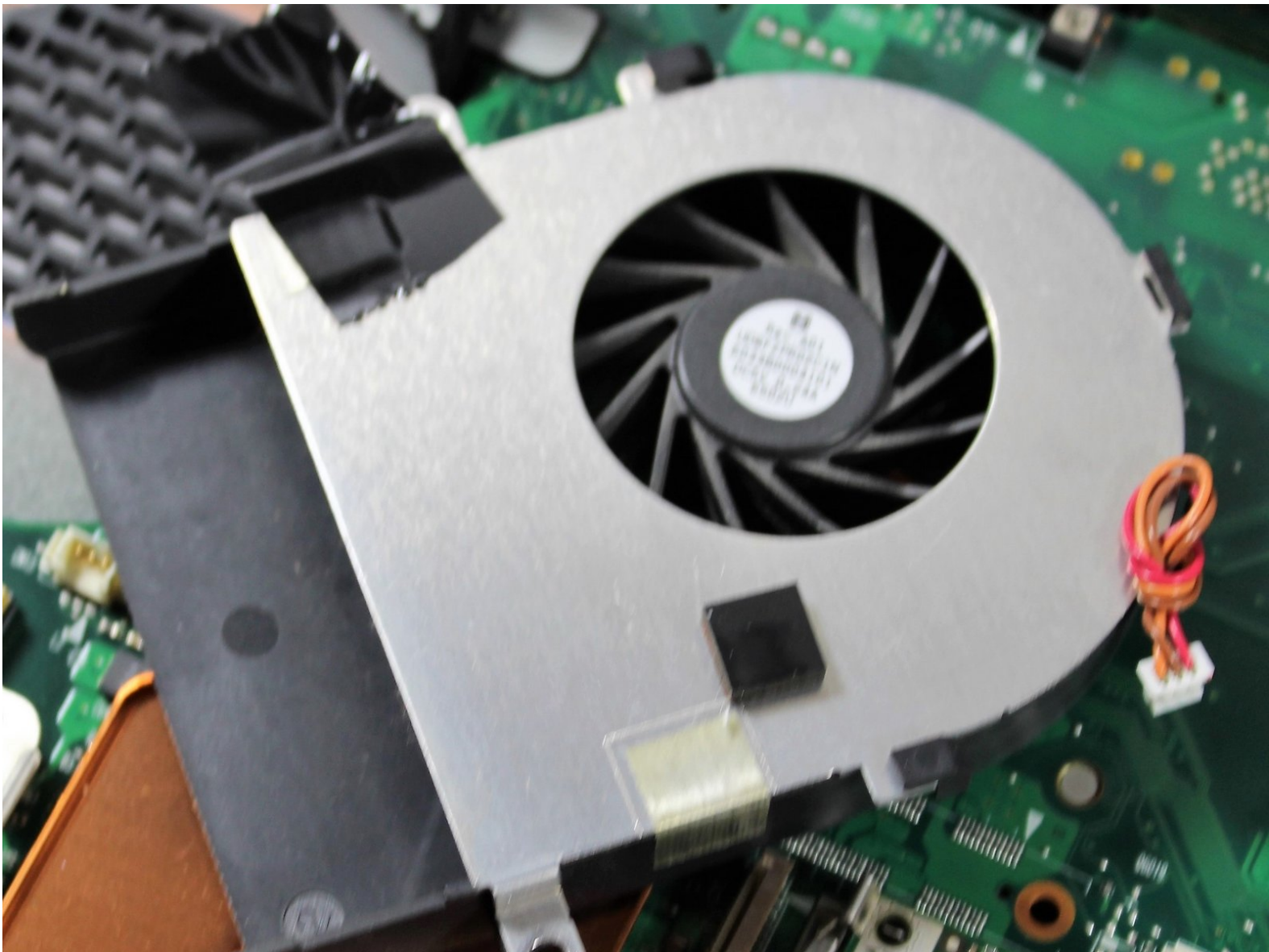




Toshiba Satellite A105-S4074 Fan Replacement

Replacing a malfunctioning fan of the Toshiba Satellite A105-S4074. If there are issues with your system's fan, the laptop may overheat and shut down.

Written By: Ryan Bortnick



INTRODUCTION

The Toshiba Satellite A105-S4074 relies on its internal fan located over the main processor to keep cool; if there are issues with your system's fan, the laptop may overheat and shut down. Should replacement be required, these easy to follow instructions will guide you through the process.



TOOLS:

- [iFixit Opening Tools](#) (1)
- [Phillips #0 Screwdriver](#) (1)
- [Phillips #1 Screwdriver](#) (1)




PARTS:

- [Toshiba Satellite A100 / A105 CPU Fan](#) (1)

Step 1 — Battery



 To prevent electrical shock, make sure the computer is turned off; and disconnect the power adapter from the computer and electrical outlet prior to beginning any repairs on this device.

- Turn the laptop upside down with the battery facing you.

Step 2



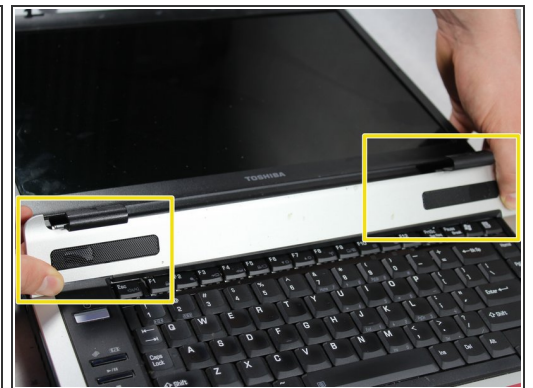
- Slide both the left and right battery release tabs outwards away from center of the laptop.
 - ⓘ Right release tab will remain locked in place.
- While still holding the left release tab, slide the battery towards you using your right hand.
- Fully remove the battery from the laptop.

Step 3 — Keyboard



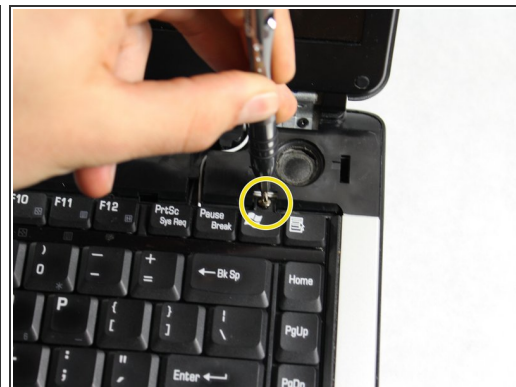
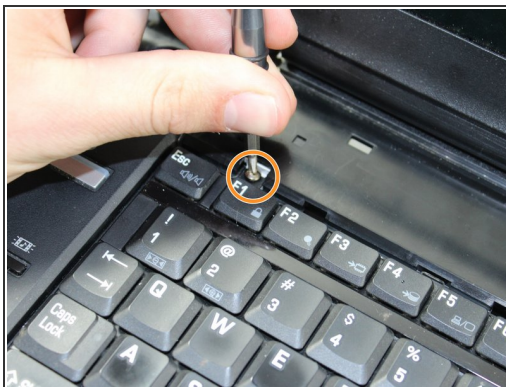
- Turn the laptop back over so it is right-side up, with the cover facing up.
- Open the laptop all the way so that the screen is horizontal with the body.

Step 4



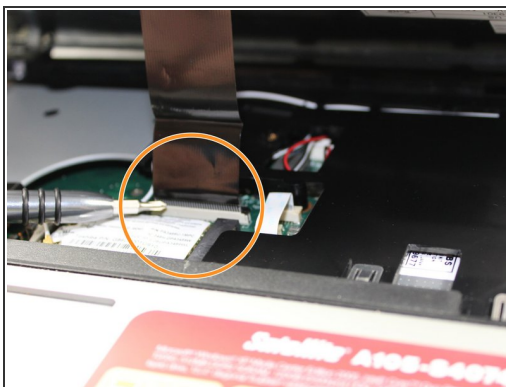
- Using the iFixit plastic opening tool, pop up the left tab along the top of the panel that is connected to the hinge for the widescreen display.
- Using the plastic opening tool, pop up the right tab along the top of the panel that is connected to the hinge for the widescreen display.
- Pry up and remove the cover panel that is located above the keyboard.

Step 5



- Position laptop so that both screws connecting the keyboard to the laptop are visible.
- Unscrew the left 3.0 mm screw that is holding the keyboard onto the laptop using the Phillips #0 screwdriver.
- Unscrew the right 3.0 mm screw that is holding the keyboard onto the laptop using the Phillips #0 screwdriver.

Step 6



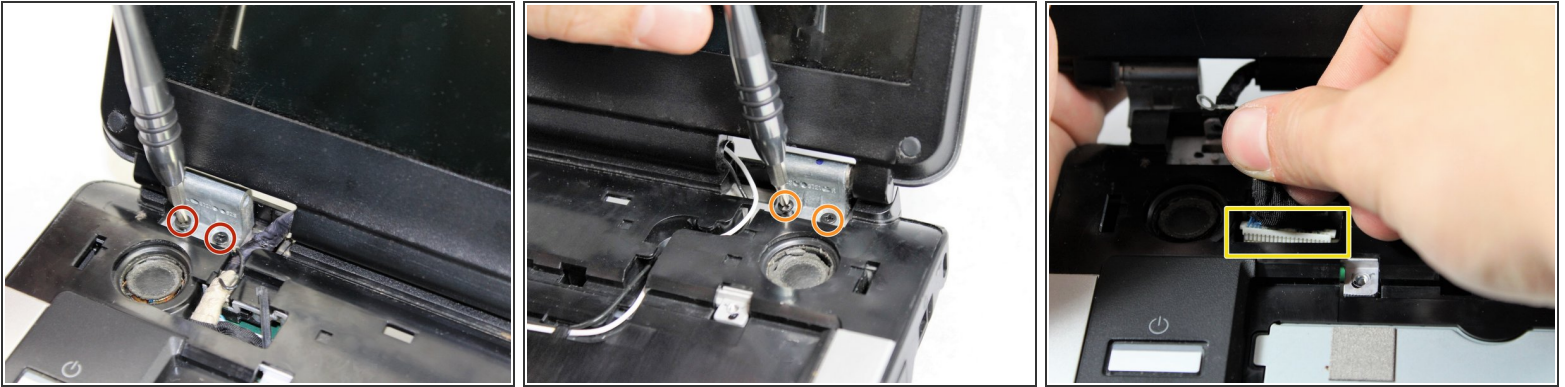
- Gently lift the keyboard from either side where the screws were located.
 - Locate where the ribbon cable connects to the motherboard, and gently open clamp.
 - Pull out the ribbon cable connecting the keyboard to the laptop.
- ⚠ Avoid pulling directly on the ribbon cable while removing it, as this will cause permanent damage.

Step 7 — Fan



- Carefully detach the black and white antenna cables connecting the widescreen display to the Intel® Pro/Wireless 3945ABG card on the motherboard by lifting the brass connectors with your fingers.
- ⚠ Avoid pulling directly on the antenna cables while detaching them, as this will cause permanent damage.
- Remove the black and white antenna cables from the channel guides in the bottom half of the laptop.

Step 8



- Unscrew the two 4.0 mm screws from the left hinge located at the base of the widescreen display using the Phillips #1 screwdriver.
- Unscrew the two 4.0 mm screws from the right hinge located at the base of the widescreen display using the Phillips #1 screwdriver.
- Gently disconnect the black video cable that connects the screen to the motherboard.

Step 9



- Turn the computer around so the screen faces away from you, and unscrew the 5.0 mm screws on the left back hinge using the Phillips #1 screwdriver.
- Turn the computer around so the screen faces away from you, and unscrew the 5.0 mm screws on the right back hinge using the Phillips #1 screwdriver.
- Remove the display and set it aside.

Step 10



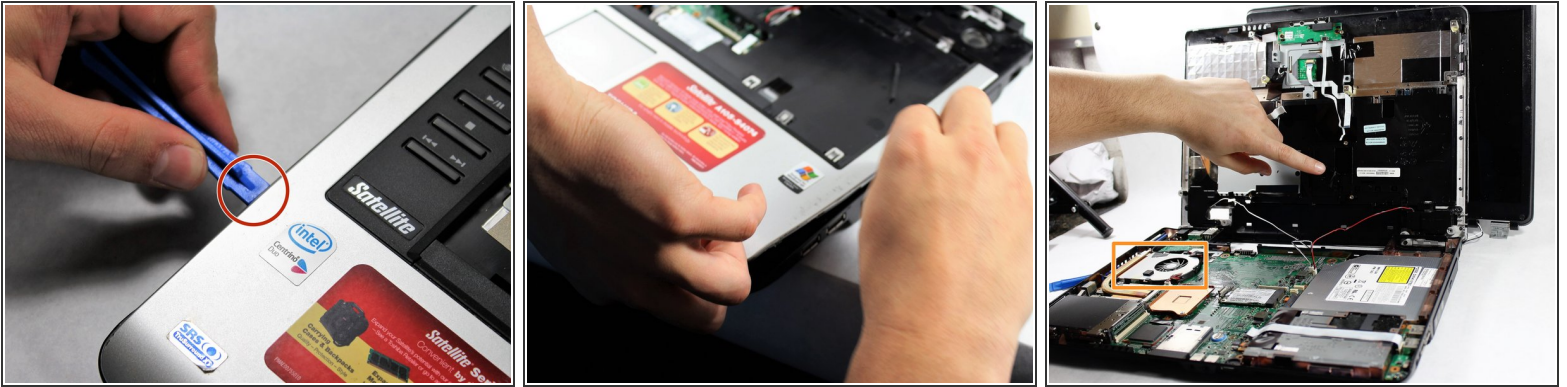
- Turn the laptop over with battery slot facing away from you.
- Remove the fifteen 6.0 mm (B6) screws from bottom of laptop using the Phillips #1 screwdriver.
- Remove the two 5.0 mm (F4) screws from the bottom of the laptop using the Phillips #1 screwdriver.

Step 11



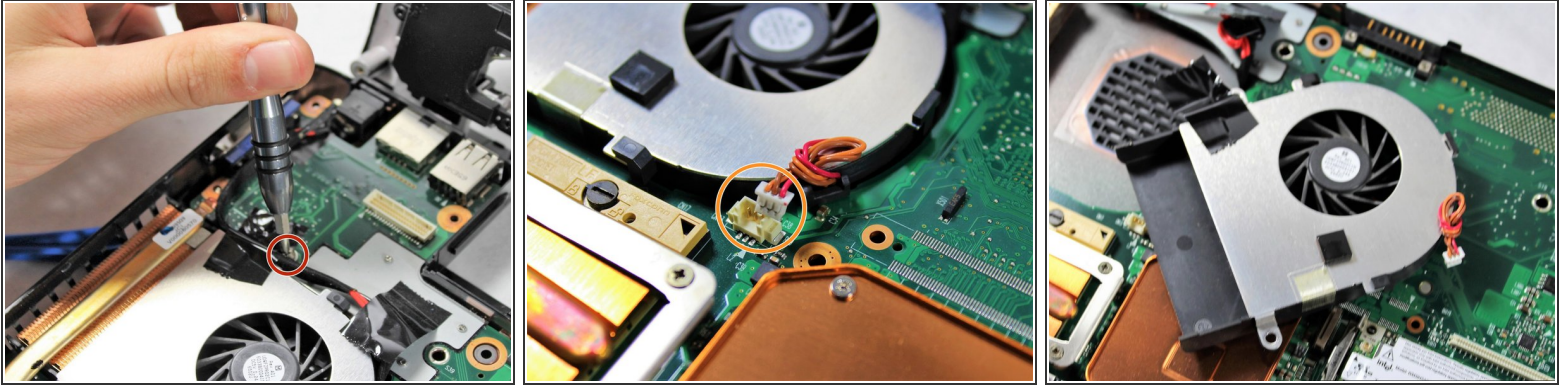
- Turn the laptop back over right-side up with the touchpad facing you.
 - Locate the three ribbon cables that are connected to the motherboard.
 - Gently open the clamps, and remove the cables.
- ⚠ Avoid pulling directly on the ribbon cables while removing them, as this will cause permanent damage.

Step 12



- Using the plastic opening tool, gently pry up on the upper casing of the laptop separating it from the lower casing.
- Slowly work the tool around the sides of the case until the two pieces are completely separated from each other.
- Remove the upper casing from the bottom casing using your hands.
- With the laptop separated, you should be able to see the CPU fan.

Step 13



- Remove the two 3.0 mm screws on each side of the fan using the Phillips #0 screwdriver.
- ⓘ Only one screw is shown being removed.
- Gently remove the fan's power supply by pulling up on the small white connector (with orange and red wires).
- ⚠ Avoid pulling on the wires while removing the power supply, as this will cause permanent damage.
- Slowly lift up and slide out the fan from the CPU (heat sink) and back of the laptop.

To reassemble your device after replacing the fan, follow these instructions in reverse order.