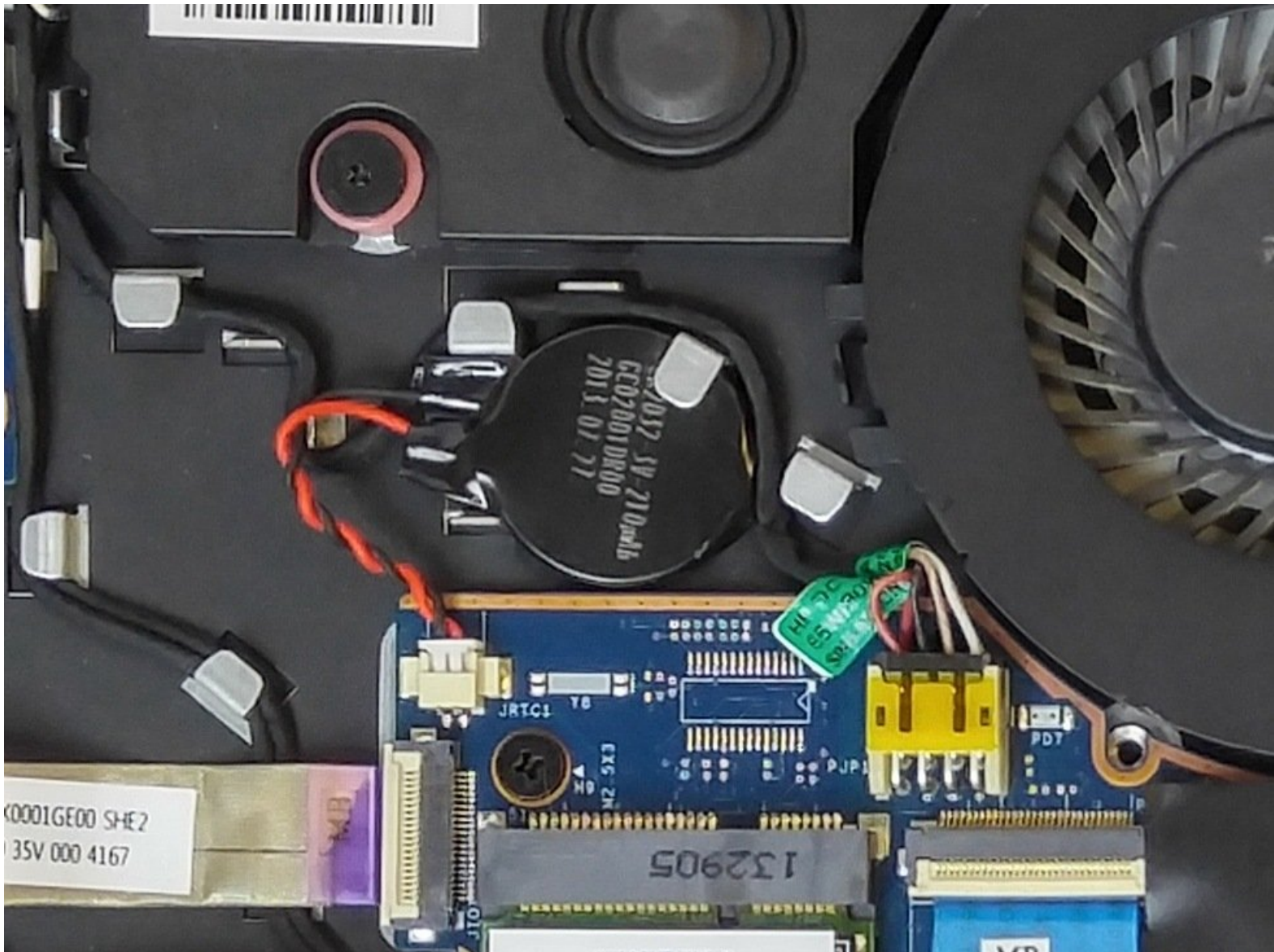




HP Envy m6-k022dx CMOS Battery Replacement

Replacement of the CMOS battery for the HP Envy m6-k022dx laptop.

Written By: Kareem Rigaud





TOOLS:

- [Phillips Head Screwdriver: Size PH1](#) (1)
 - [iFixit Opening Tools](#) (1)
-

Step 1 — Lower Case



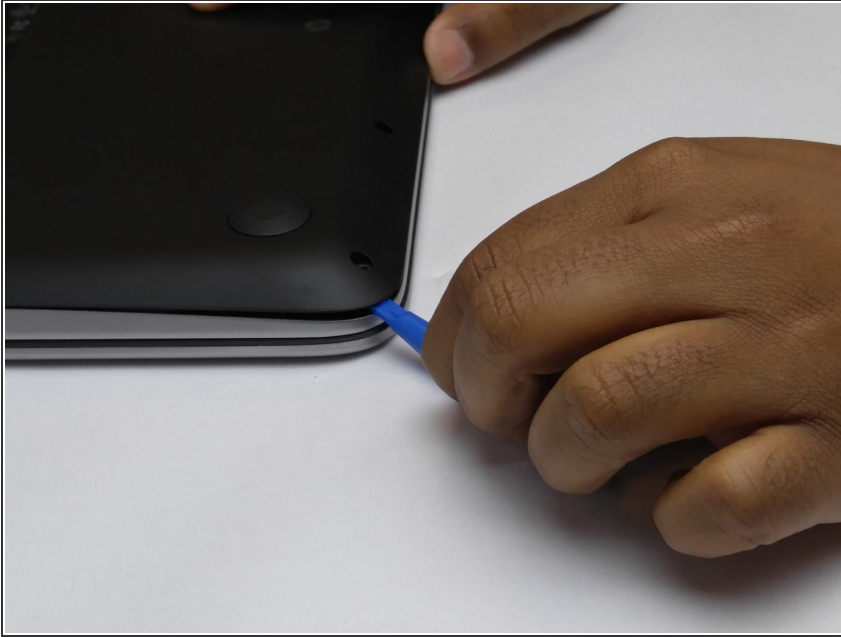
- There are 12 phillips head screws which need to be unscrewed before removing the backplate of the laptop.

Step 2



- Next, use a size PH1 Philips head screw driver to remove the screws.

Step 3



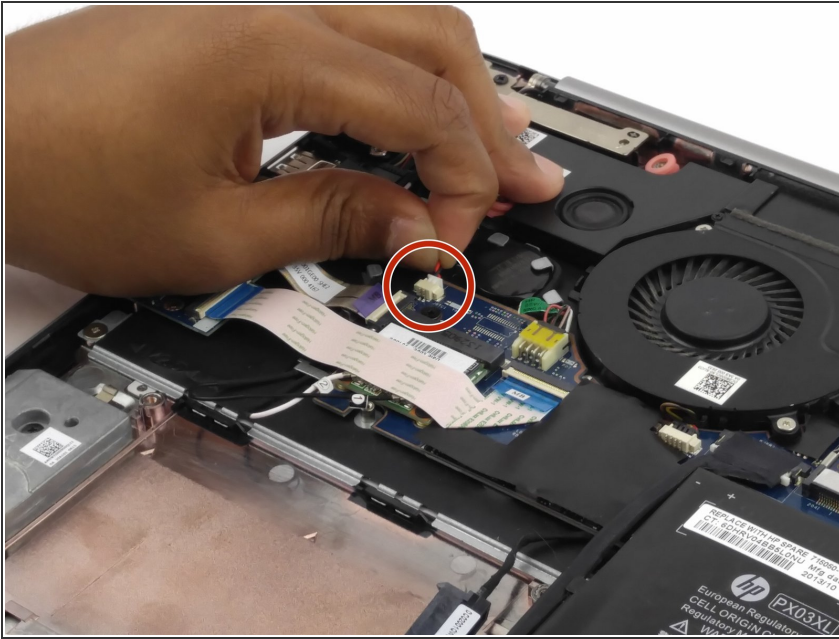
- Then, use a prying tool to help uncouple the backplate.

Step 4



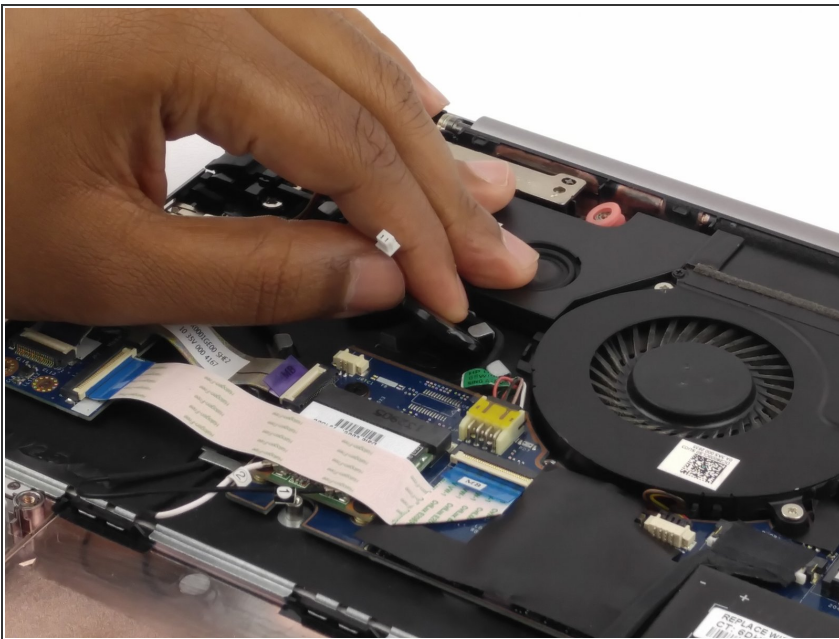
- Finally, use both hands to lift up and take off the back plate of the computer.

Step 5 — CMOS Battery



- There is a power cord connecting the CMOS battery to the motherboard. Disconnect this cord by gently pulling it up, towards the edge of the device.

Step 6



- Once the connecting cord has been disconnected, gently lift the battery directly up, above the device.
- The CMOS battery is now completely removed, and ready to be replaced.

To reassemble your device, follow these instructions in reverse order.