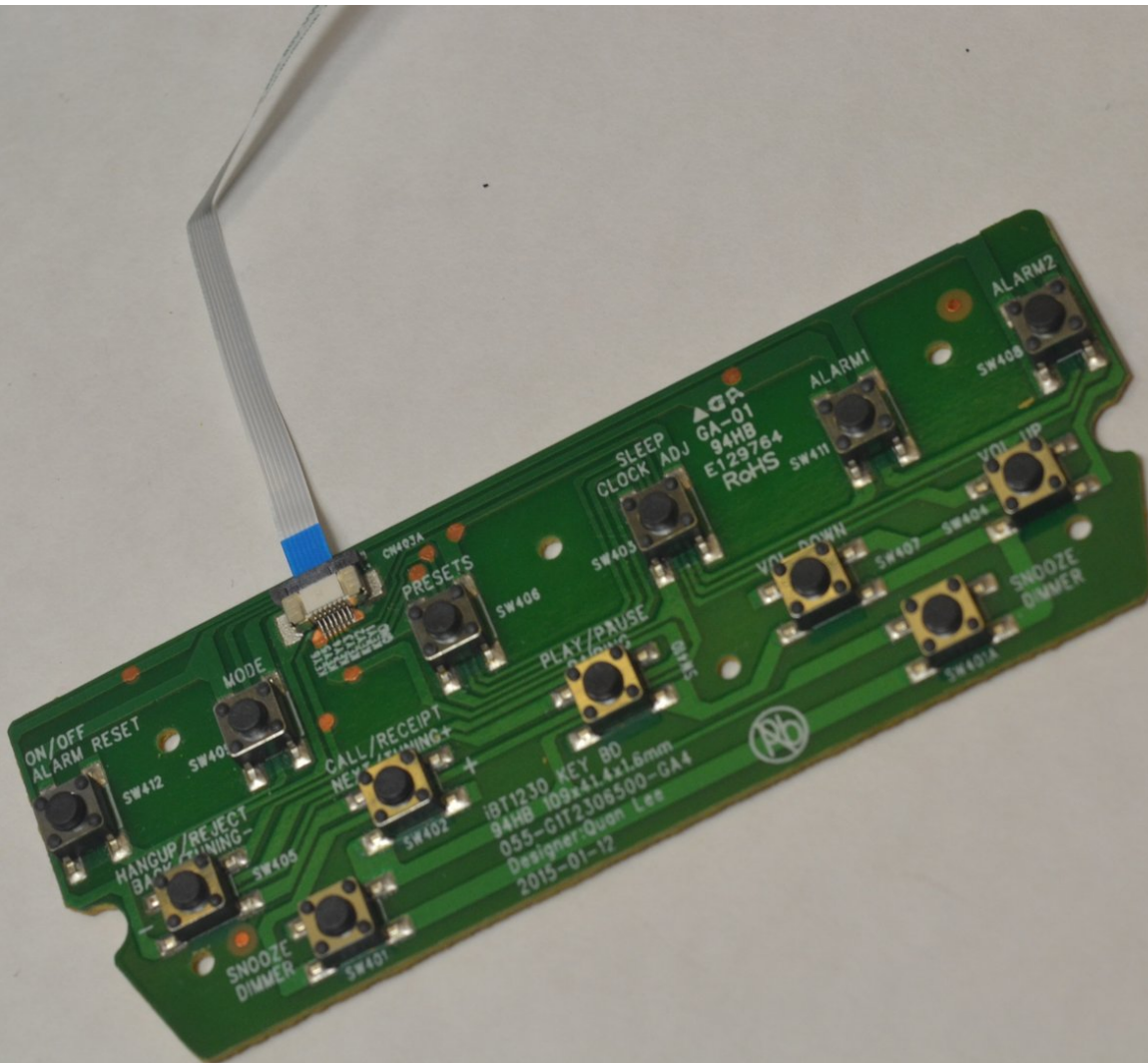




# iHome iBT230 Keyboard (Buttons) Replacement

Replace your internal keyboard palate to fix any buttons that may have not been working properly on the iHome iBT230.

Written By: Bilal Siddiqui



---

## INTRODUCTION

This guide provides step-by-step instructions for replacing the keyboard (buttons) of the iHome iBT230. The buttons allows for the overall control of this device, such as a play/pause/pair button, powering it off, changing the mode, a preset button for the radio, a sleep/clock adjust button, two buttons for setting alarms, answering and ending phone calls, a snooze button, and finally a snooze/dimmer button. By replacing the keyboard plate, it will fix any broken or non-responsive buttons.

---

### TOOLS:

- [Phillips #00 Screwdriver](#) (1)
-

## Step 1 — Keyboard (Buttons)



- Remove the four 5.5 mm Phillips Head #00 screws from the bottom palate of the iBT230.

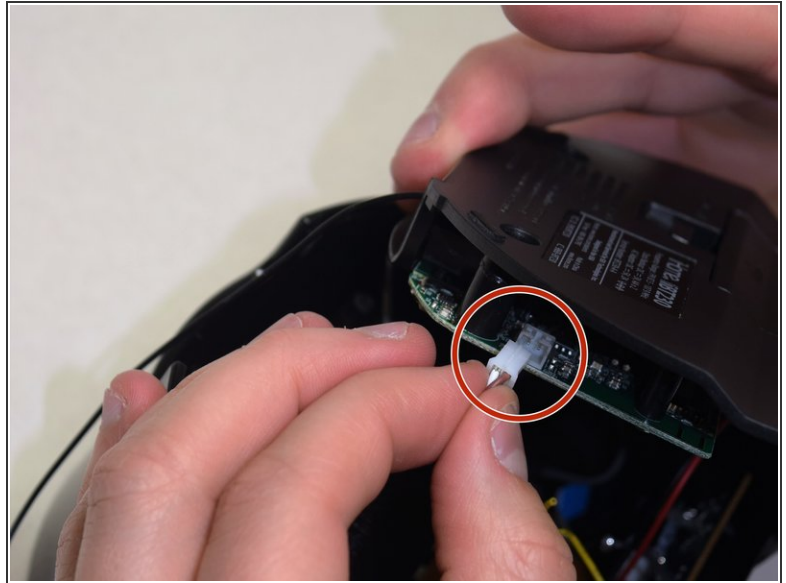
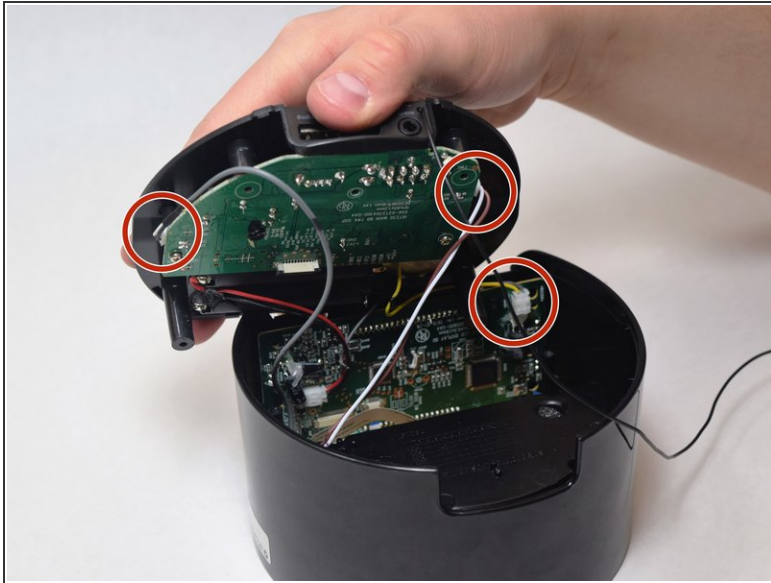
## Step 2



- Grip the top of the iBT230 by placing your thumb on the back portion, where the USB port is located. Pull up, and you should notice various different colored wires, connected to the Main Motherboard.



### Step 3



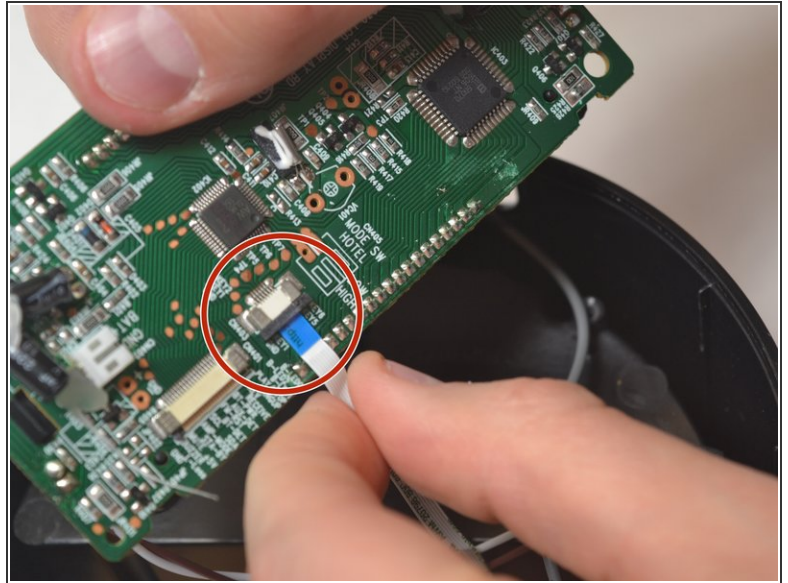
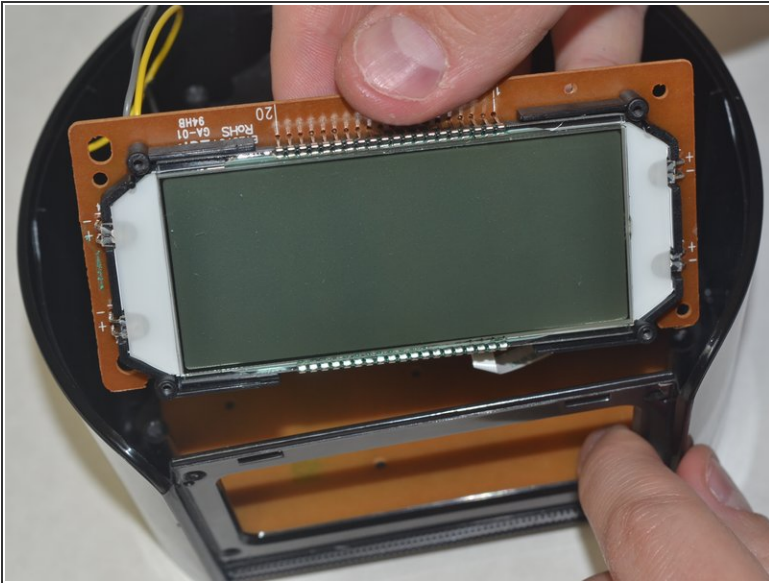
- Unplug the connectors from all sides of the iBT230, and unplug the wire connected to the screen.
- ⓘ Make sure to note which wire goes where, you don't want to re-solder the wires into the incorrect ports!

### Step 4



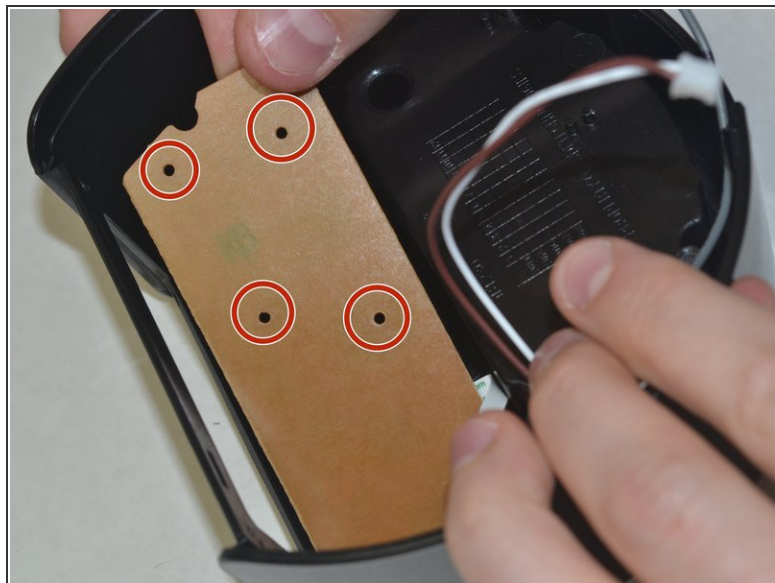
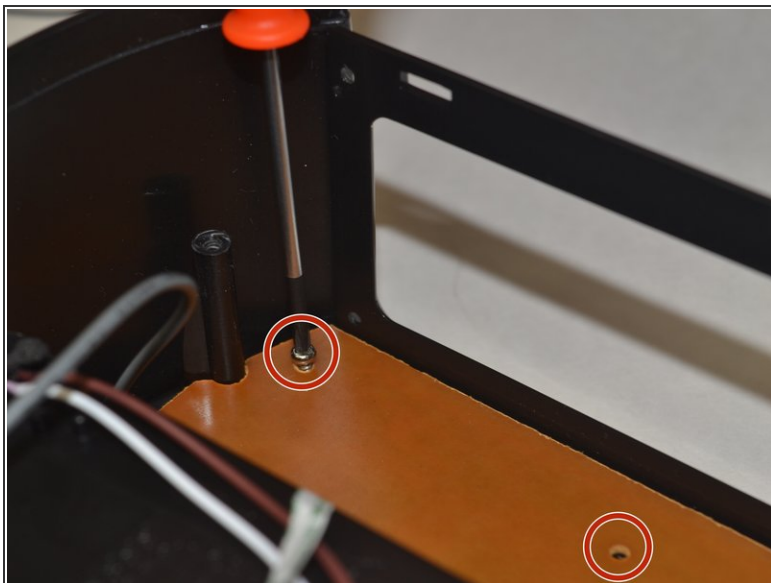
- Unscrew the four 5.5 mm Phillips #00 face panel screws from the front screen.

## Step 5



- Once the four 5.5 mm Phillips #00 screws come out, slide the screen out vertically.
- Disconnect the blue tipped ribbon from the back of the screen.

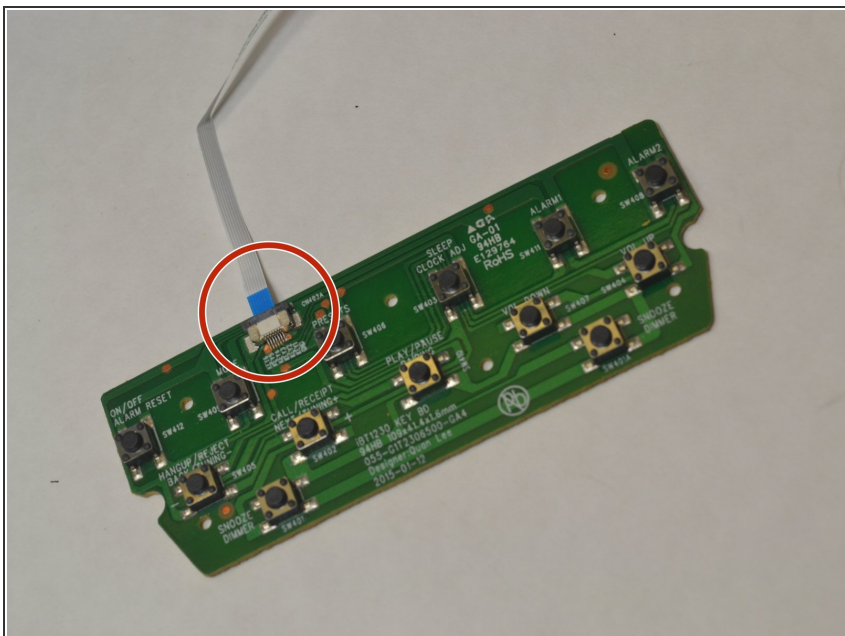
## Step 6



- Once the screen is removed, unscrew the six 4.0 mm Phillips #02 screws located on top of the keyboard.

**i** As shown in the image, the keyboard is represented by a brown colored palate.

## Step 7



- Disconnect the blue tipped ribbon from the back of the keyboard.

To reassemble your device, follow these instructions in reverse order.