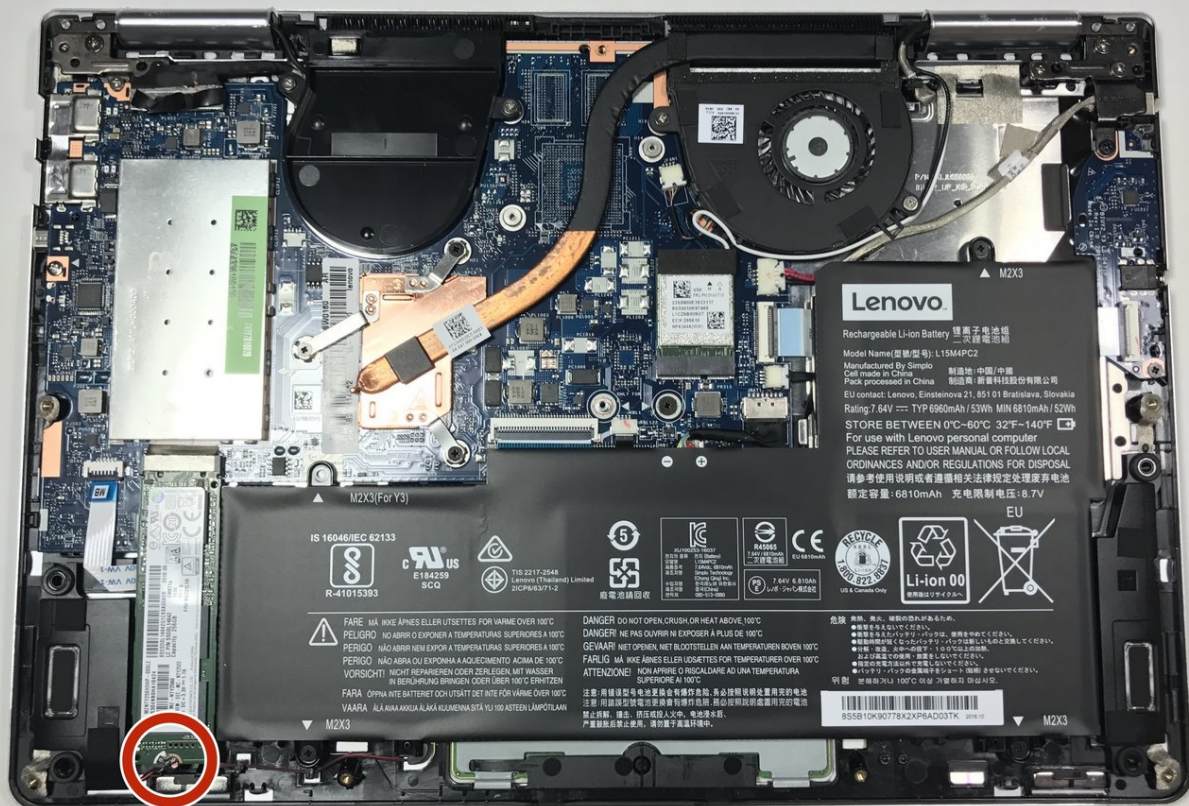




Lenovo Yoga 710-14IKB SSD Replacement

Written By: Grant Doerksen





TOOLS:

Tournevis Torx T4 (1)

Outil pour ouvrir iFixit (1)

Tournevis cruciforme #00 (1)



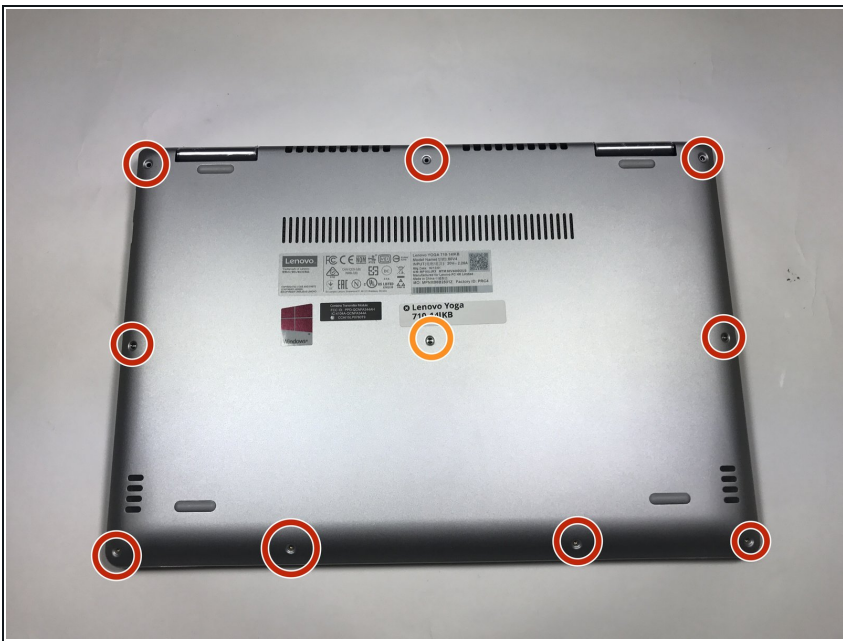
PARTS:

Crucial P3 NVMe PCIe M.2 2280SS SSD (1)

Crucial P3 Plus NVMe PCIe M.2 2280SS SSD (1)

Crucial P5 Plus PCIe M.2 2280SS SSD (1)

Step 1 — Back Cover



⚠ Ensure your device is completely OFF before starting this guide.

- Use a Torx T4 screwdriver to unscrew the nine 5 mm screws holding the cover in place.

- Use a Torx T4 screwdriver to unscrew the 8 mm screw in the center.

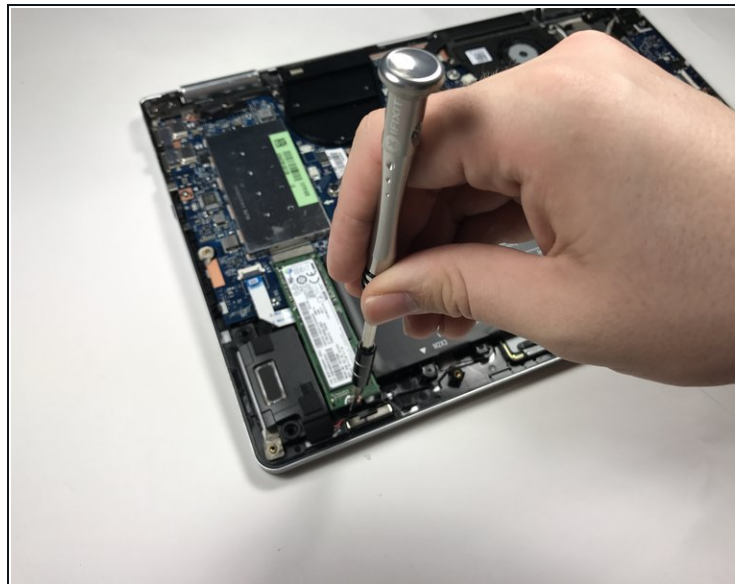
★ When, reassembling, make sure not to tighten the screws too much or you may risk cracking the plastic cover.

Step 2



- Use the plastic opening tool to pry the cover up and away from the laptop, starting at one end and working your way around the cover.
- ❗ The cover is large and flat and made of thin plastic. It cracks easily, so make sure not to pry too hard.

Step 3 — SSD



- Use a Phillips #00 screwdriver to remove the 3mm screw on the SSD.

Step 4



- Use your fingers to lift up the SSD and pull away from the socket removing it from the laptop.

To reassemble your device, follow these instructions in reverse order.