



iHome iBT230 Motherboard Replacement

Replace your malfunctioning motherboard to restore the normal functionalities of the iHome iBT230.

Written By: Bilal Siddiqui



INTRODUCTION

This guide provides step-by-step instructions for replacing the main motherboard of the iHome iBT230. The main motherboard is responsible for allowing communication between the crucial electronic components of the iBT230, such as the central processing unit (CPU) , memory, also providing the connectors for other peripherals.



TOOLS:

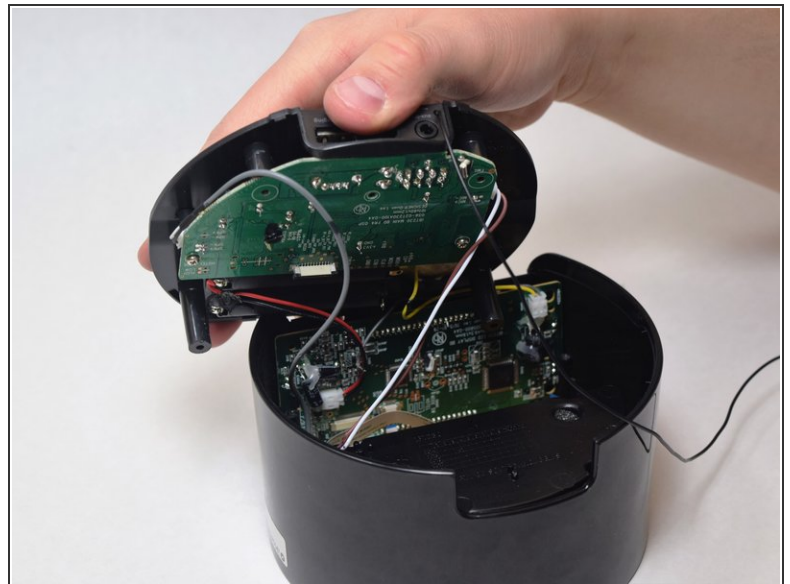
- [Phillips #00 Screwdriver](#) (1)
-

Step 1 — Motherboard



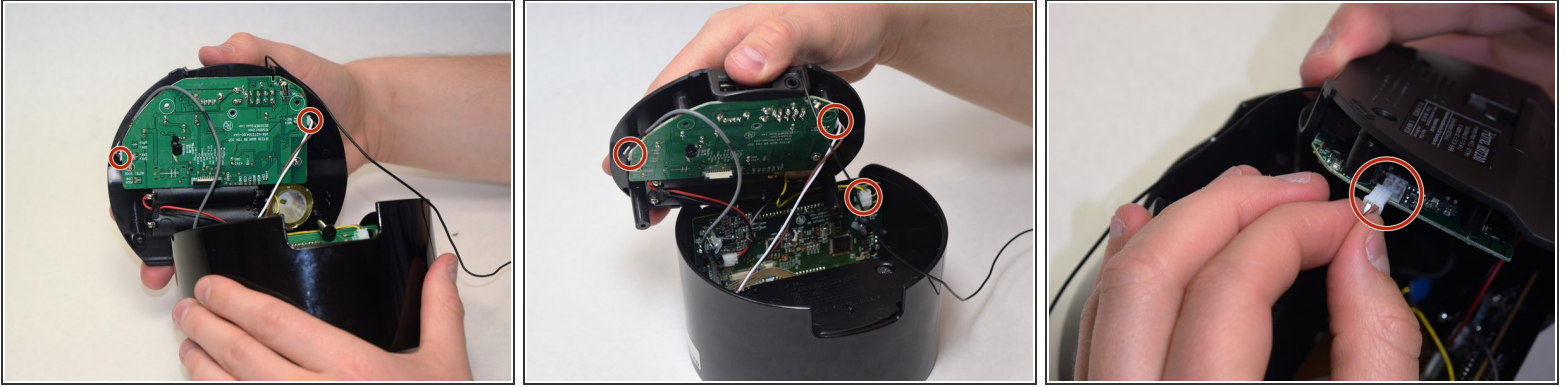
- Remove the four 5.5 mm Phillips Head #00 screws from the bottom palate of the iBT230.

Step 2



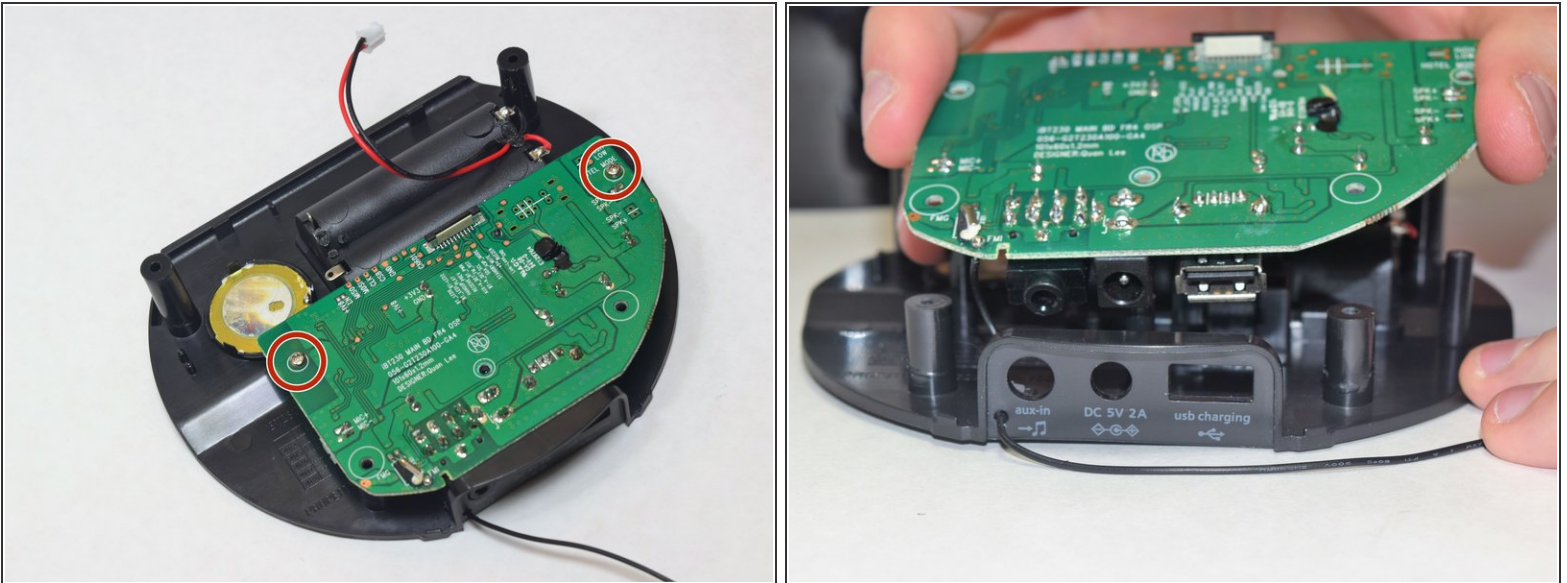
- Grip the top of the iBT230 by placing your thumb on the back portion, where the USB port is located. Pull up, and you should notice various different colored wires, connected to the Main Motherboard.

Step 3



- Unplug the connectors from all sides of the iBT230, and unplug the wire connected to the screen.
- ☞ Make sure to note which wire goes where, you don't want to re-solder the wires into the incorrect ports!

Step 4



- On the bottom component where the green Main Motherboard is located, remove the two 5.5 mm Phillips #00 screws.
- The old Motherboard will come free from the bottom of the iBT230.

To reassemble your device, follow these instructions in reverse order.