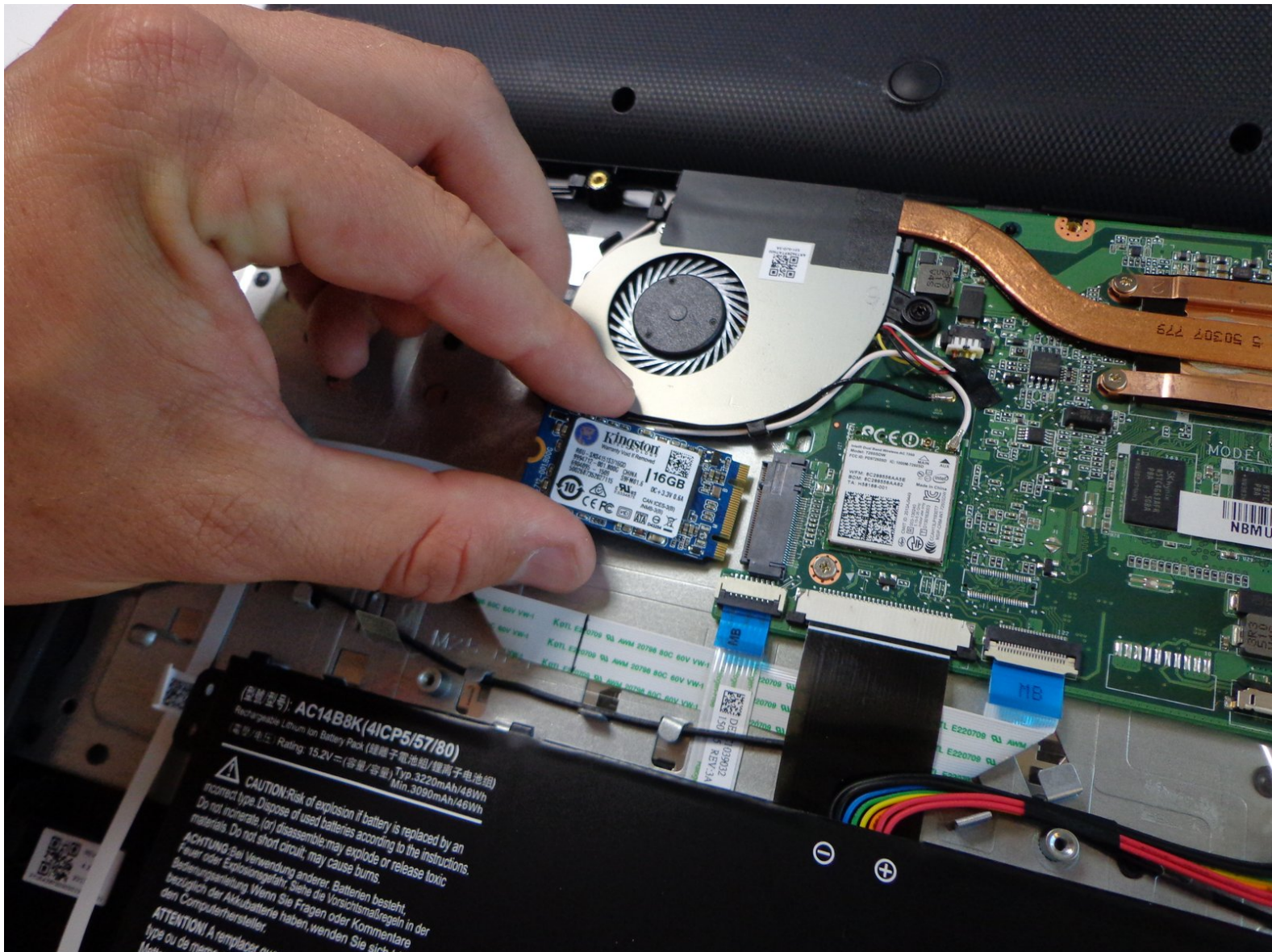




Acer Chromebook 15 C910-C453 Solid-State Drive Replacement

This guide will show you step-by-step how to remove and replace the solid-state drive in the Acer Chromebook 15 C910-C453.

Written By: Jacob Rakestraw



INTRODUCTION

Follow this guide to replace the solid-state drive in your Chromebook. Note that this may interfere with your Chromebook's ability to update Chrome OS or void its warranty.



TOOLS:

- [Phillips #1 Screwdriver](#) (1)
- [iFixit Opening Tool](#) (1)
- [Spudger](#) (1)



PARTS:

- [HP Chromebook 14-Q010DX Solid-state drive 16GB](#) (1)

Step 1 — Battery



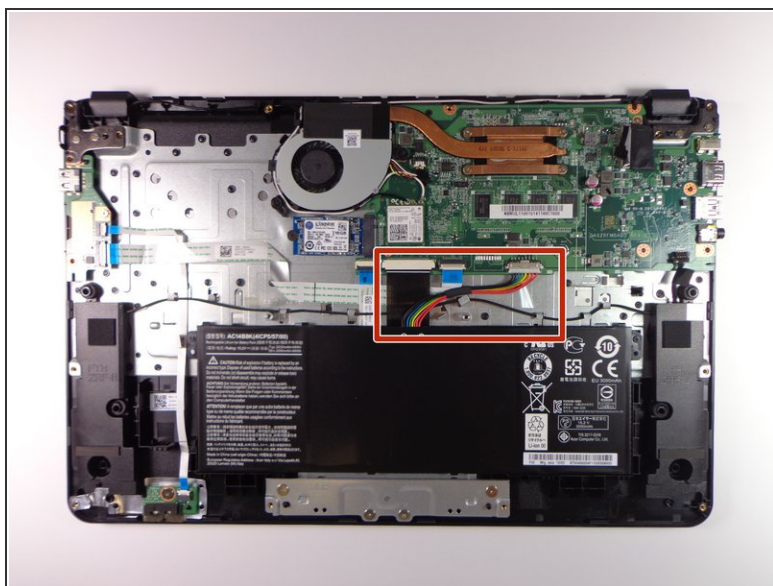
- Turn the Chromebook onto its backside and unscrew the the following Phillips #1 screws:
 - Sixteen 5mm Phillips screws located around the border.
 - Two 5mm Phillips screws located in center.

Step 2



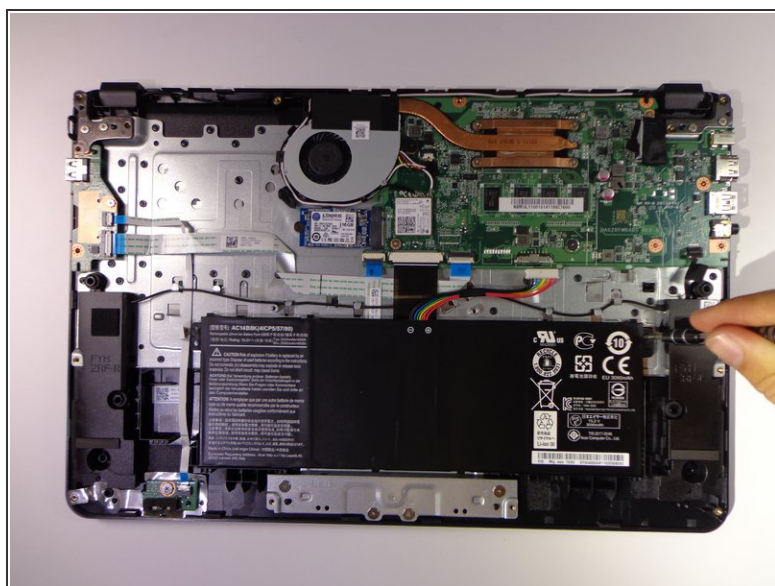
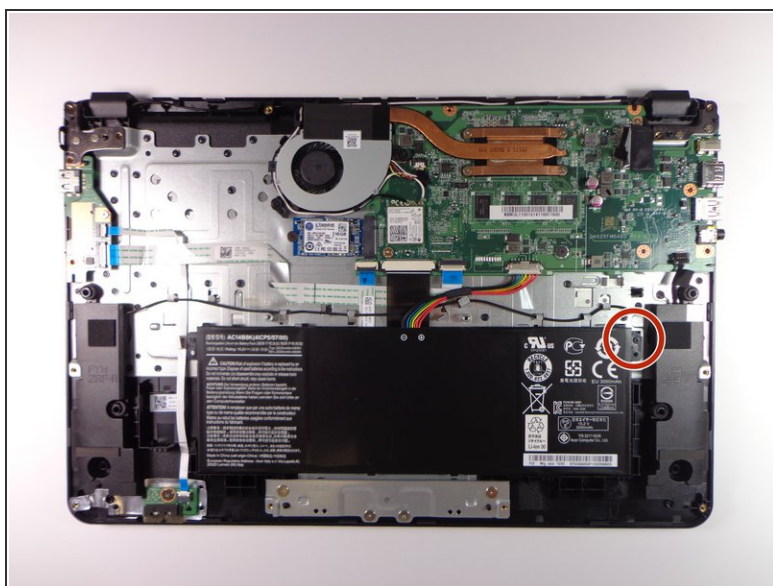
- Remove the back cover by carefully prying each side with an iFixit Opening Tool.
- Set aside back cover.

Step 3



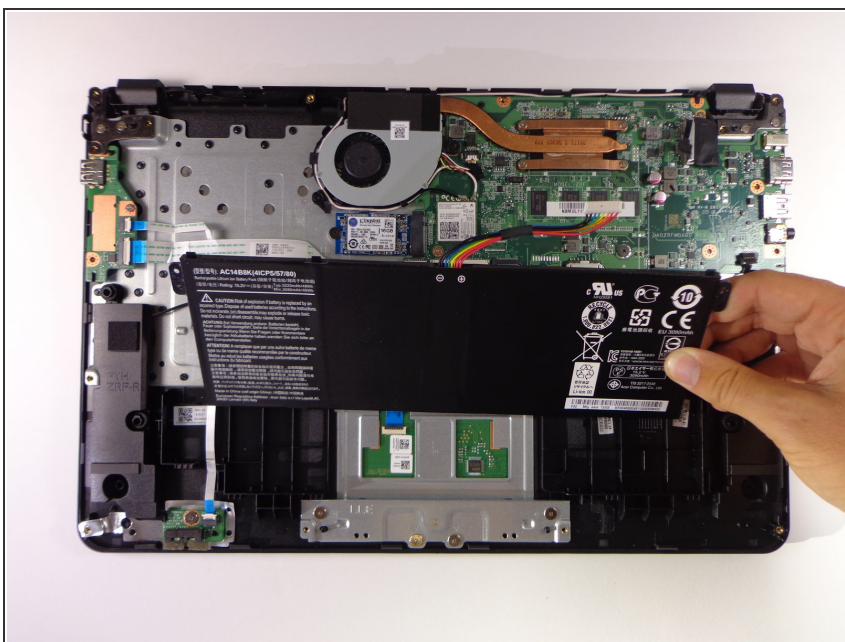
- Using a spudger, carefully unplug the rainbow wires connected to the top of the battery.

Step 4



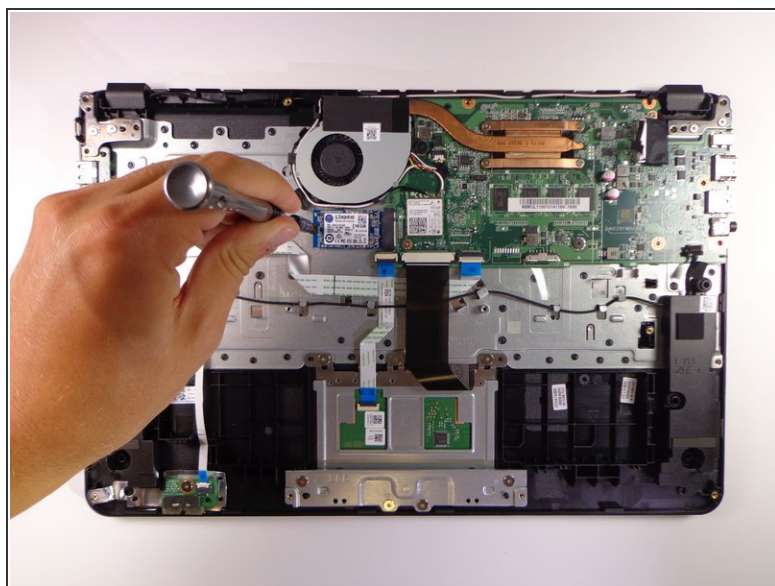
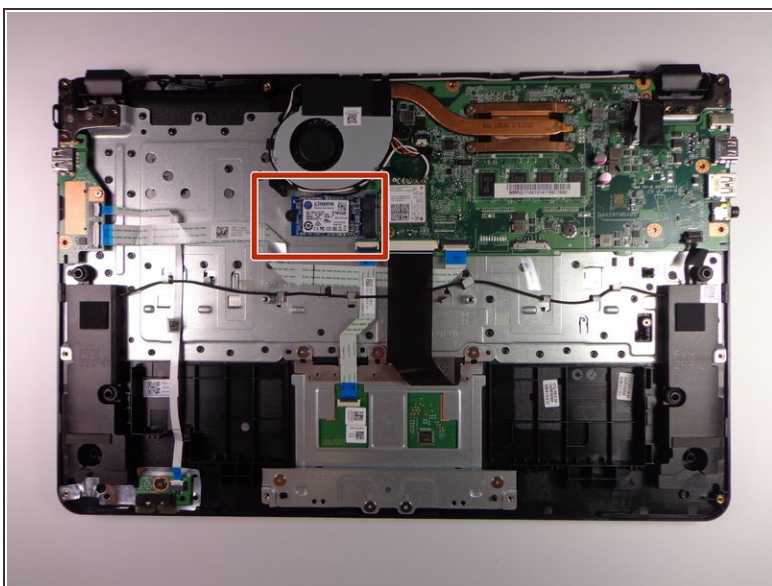
- Unscrew the 4mm Phillips #1 screw located at the top right of battery.

Step 5



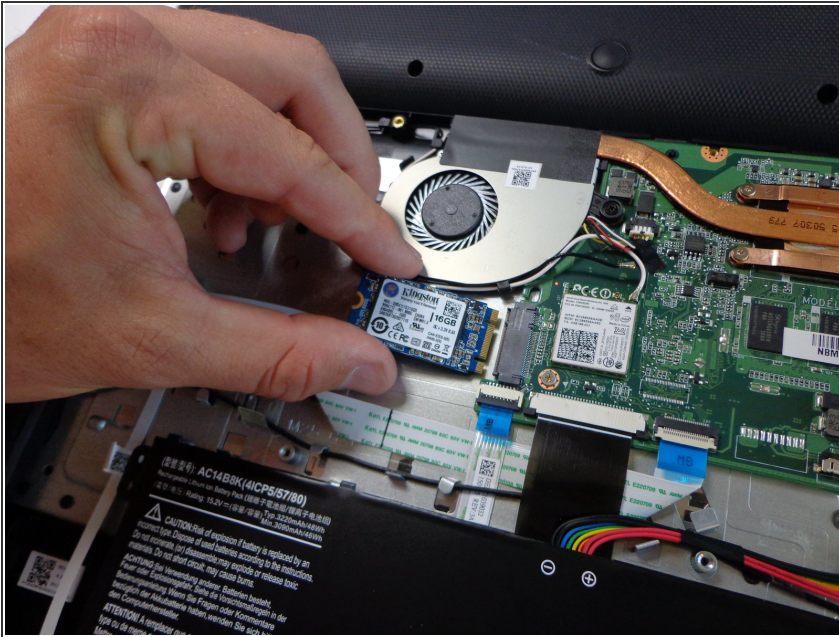
- Remove the battery.

Step 6 — Solid-State Drive



- Remove the screw at the left of the drive.

Step 7



- Remove the drive by pulling it gently to the left.

To reassemble your device, follow these instructions in reverse order.