



iRobot Roomba 870 Side Brush Motor Replacement

The motor is the driving component of the Roomba. By replacing this motor with a new functioning one, the Roomba will perform perfectly.

Written By: Karthik Padmanabhan



INTRODUCTION

This guide gives instructions on removing the side brush motor in the Roomba 870. There are a lot of screws that need to be taken out to replace the motor, so make sure you set aside a spot for the screws so that they are not lost.



TOOLS:

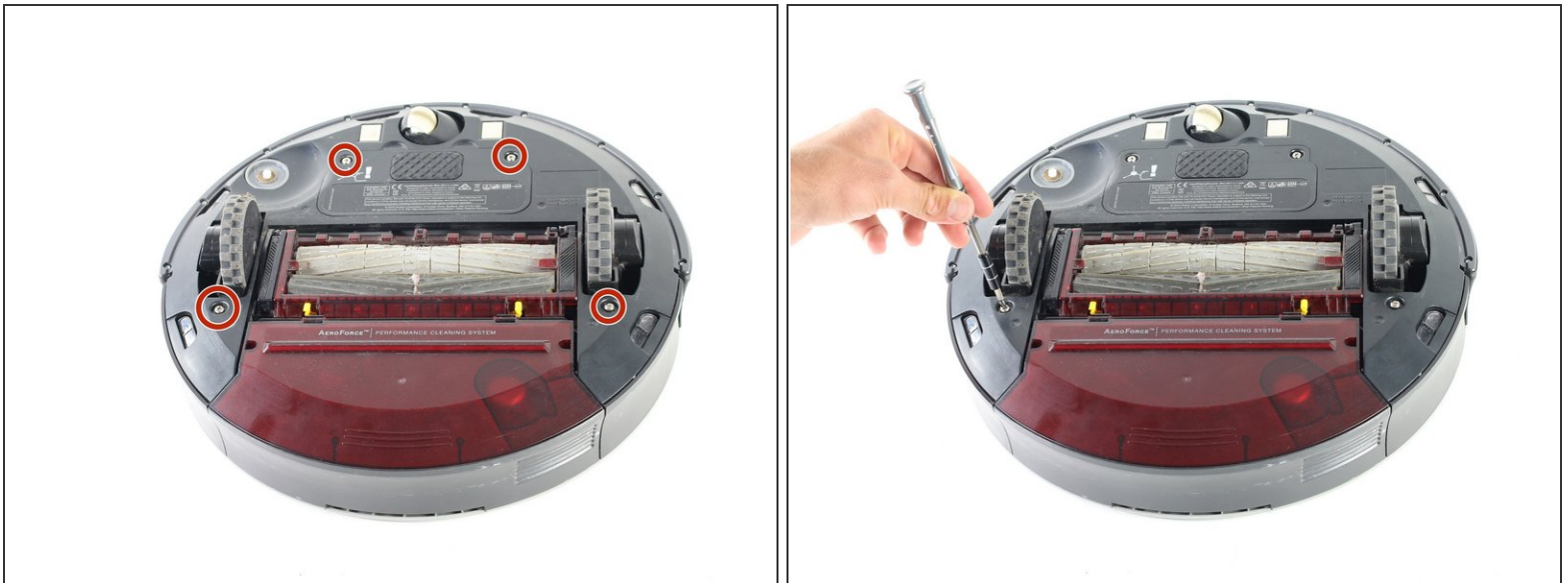
- [Y1 Tri-point Screwdriver](#) (1)
 - [Phillips #00 Screwdriver](#) (1)
-

Step 1 — Side Brush Motor



- Turn the Roomba over so that the back side is facing up.
- Using the Phillips #00 screwdriver, remove the 4.0mm screw in the center of the yellow side brush and lift the part out.

Step 2



- Use the Phillips #00 screwdriver to remove the four 3.5mm screws that hold down the battery panel and rear panel.

Step 3



- First remove the battery panel, which is the small rectangular.
- After removing the battery panel, remove the rear panel.

Step 4



- Remove the three small 3.5mm screws fastened to the motor housing.
- After removing the screws, remove the motor housing from the rest of the Roomba.

Step 5



- Remove the 2.5mm screw in the center of the motor housing using a Tri-Wing Y1 screwdriver.
- After removing the screw, remove the top shell casing of the motor housing. Underneath, you will see a white gear with two screws next to it.

Step 6



- Remove the two 2.5mm screws in the inner motor housing using a Phillips #00 screwdriver.
- After removing the two screws, the motor will slide right out the back, and it can be replaced.

To reassemble your device, follow these instructions in reverse order.