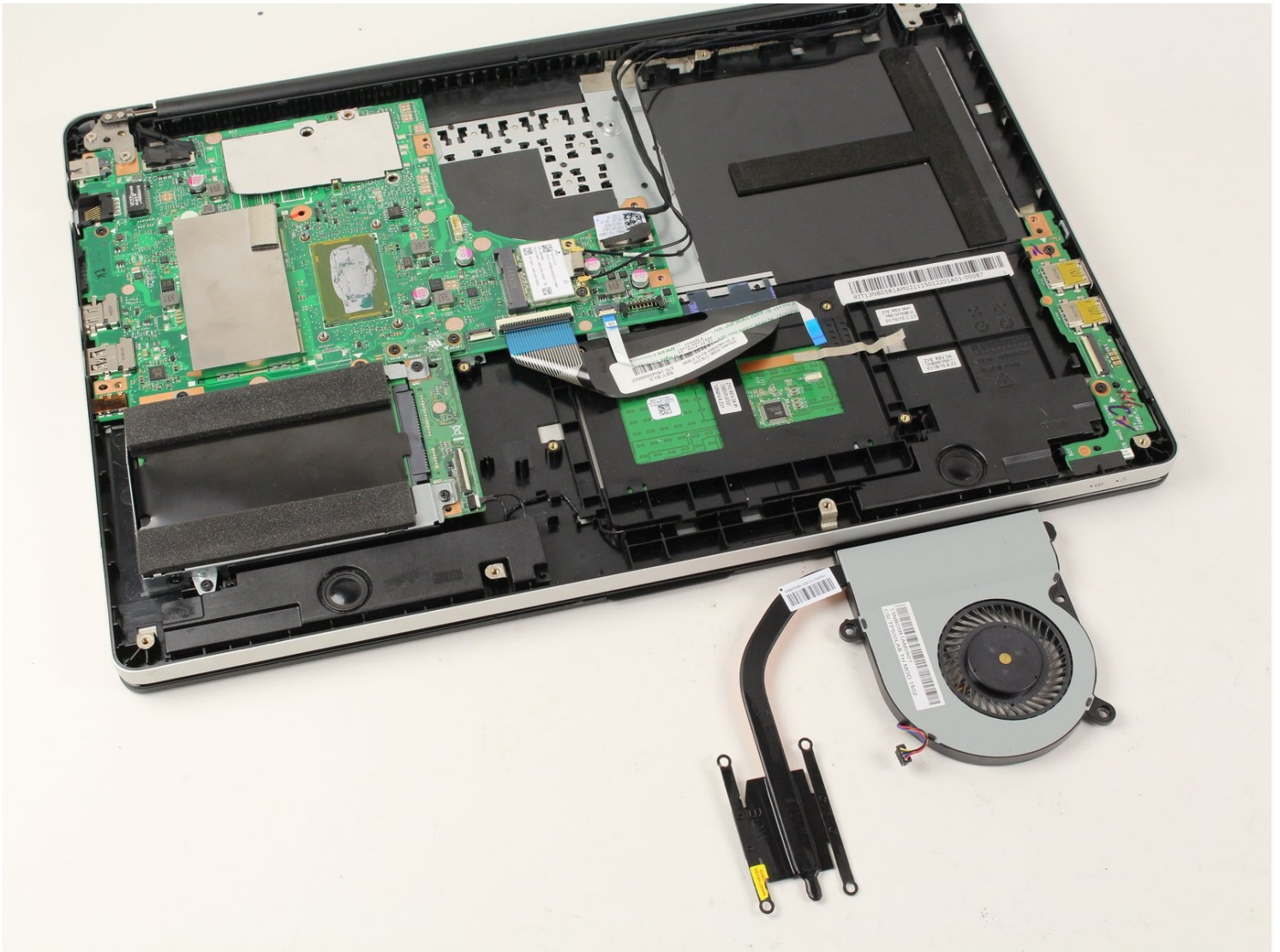




# ASUS Transformer Book Flip TP500LA Fan Replacement

The fan is responsible for self cooling the...

Written By: Solomon Dovich



# INTRODUCTION

The fan is responsible for self cooling the computer during operation. Without a working fan, your computer is prone to overheating and continually shutting down. This guide will help you replace your faulty or broken fan in your ASUS Transformer Book Flip TP500LA.

## TOOLS:

Phillips #0 Screwdriver (1)

Heavy-Duty Spudger (1)

iFixit Opening Tool (1)

Tweezers (1)

## Step 1 — Back Case



- Remove the ten 10 mm Phillips #0 screws found on the computer's back case.

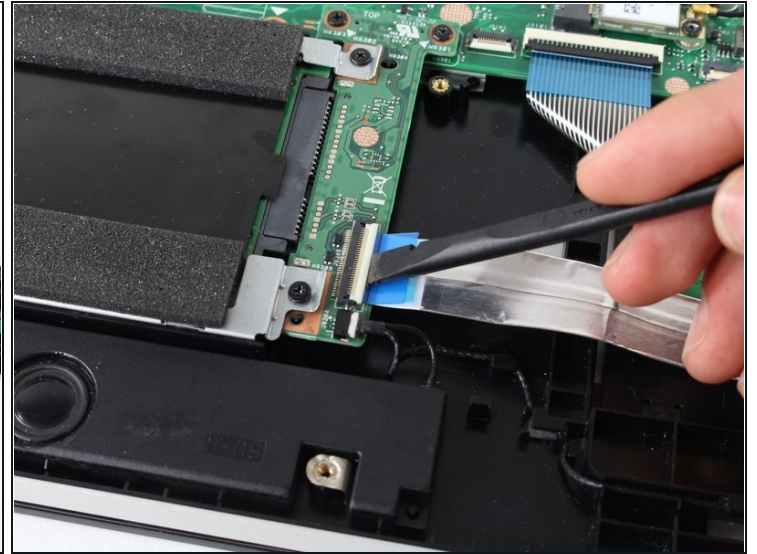
## Step 2



- Slide a heavy-duty spudger between the back case and the computer.
- Slowly work around the edges to undo the clips to fully separate the back case from the computer.
- Gently lift off the back case.

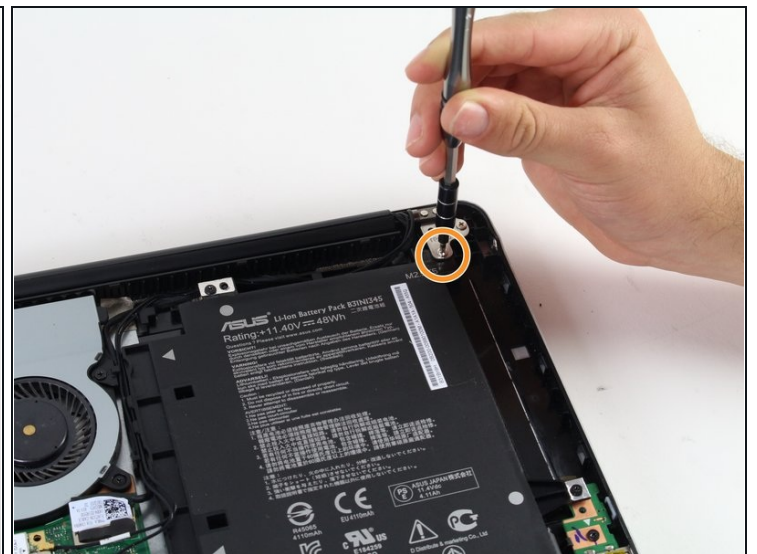


### Step 3 — Battery



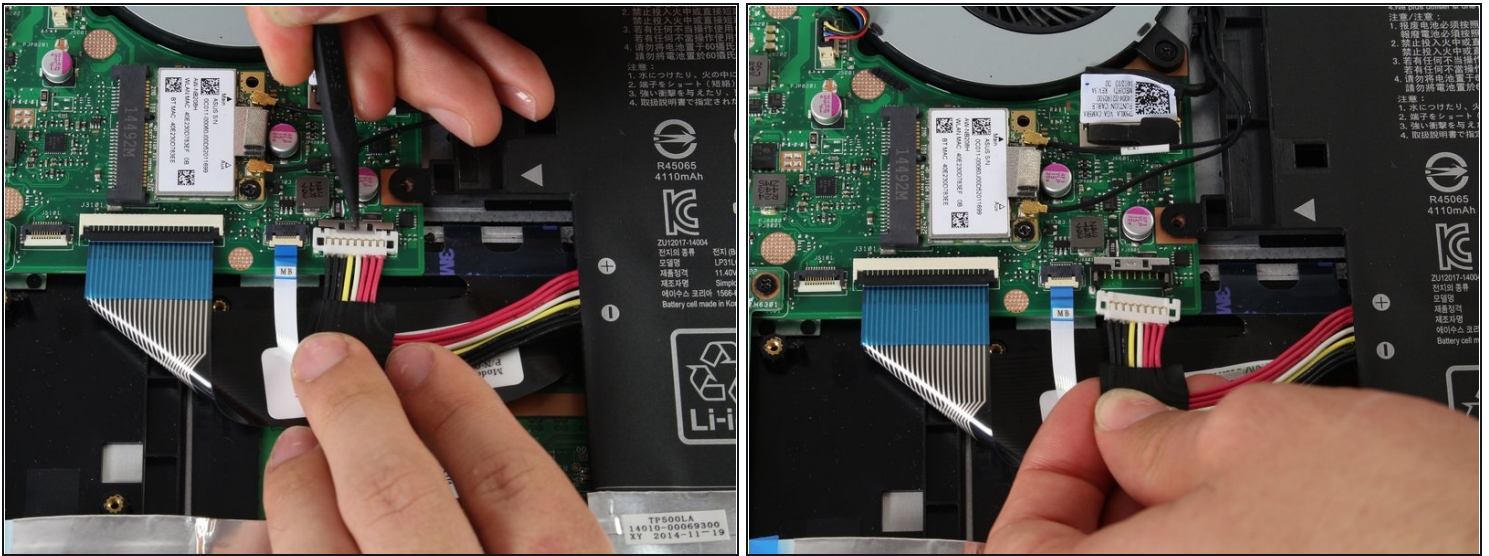
- Slide a heavy-duty spudger into the ZIF connector and gently flip up the retaining flap to open the connector.
- Pull the blue tab to remove the ribbon.

### Step 4



- Remove the three 5 mm Phillips #0 screws.
- Remove the single 6 mm Phillips #0 screw.

## Step 5



- Use the heavy-duty spudger to pry the white 8-pin connector away from the motherboard.
- Gently pull the connector away from the motherboard.

⚠ The black 8-pin connector on the motherboard is very fragile, so be careful when removing the white 8-pin connector.

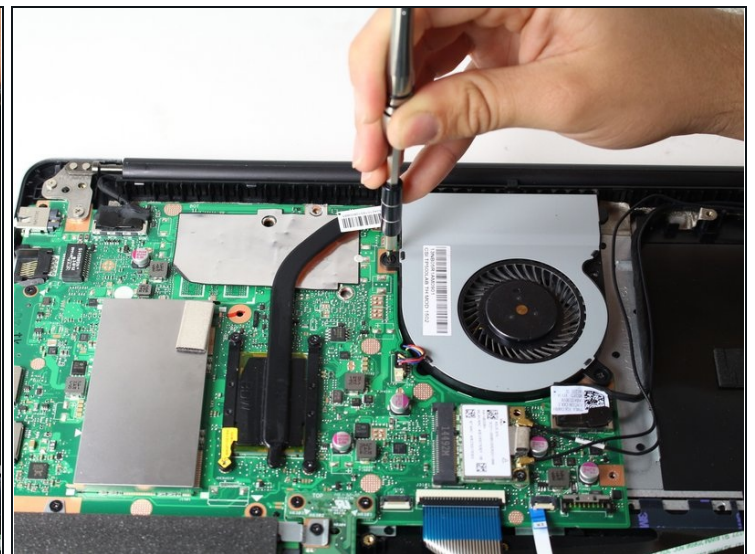
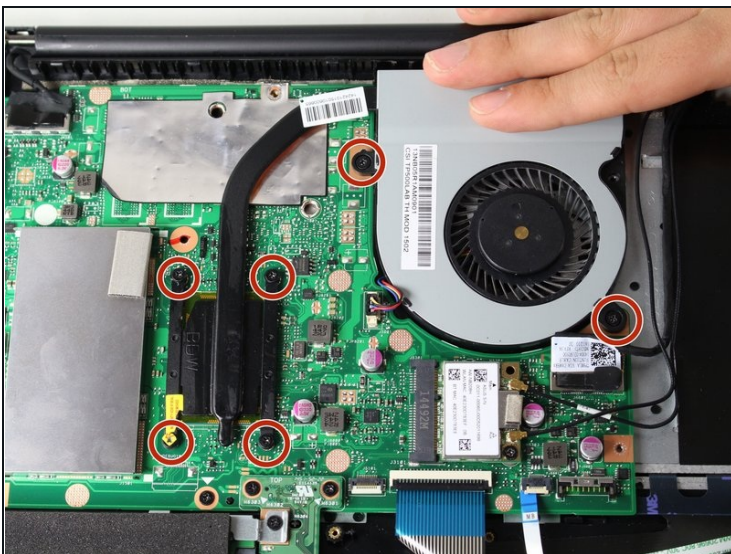


## Step 6



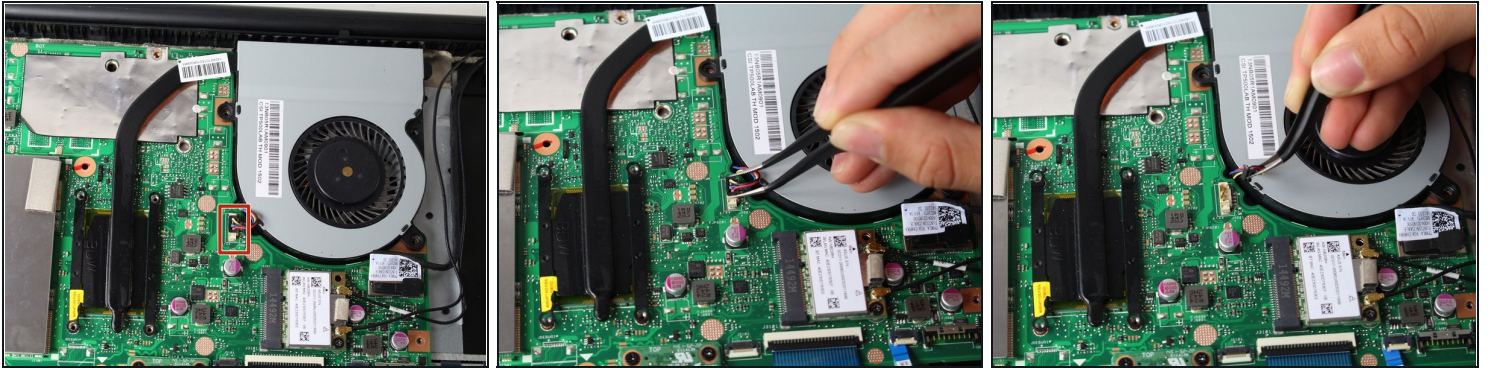
- Use the blue plastic opening tool to loosen and remove the three black wires from the battery.
- Slide the battery out from the computer to remove.

## Step 7 — Fan



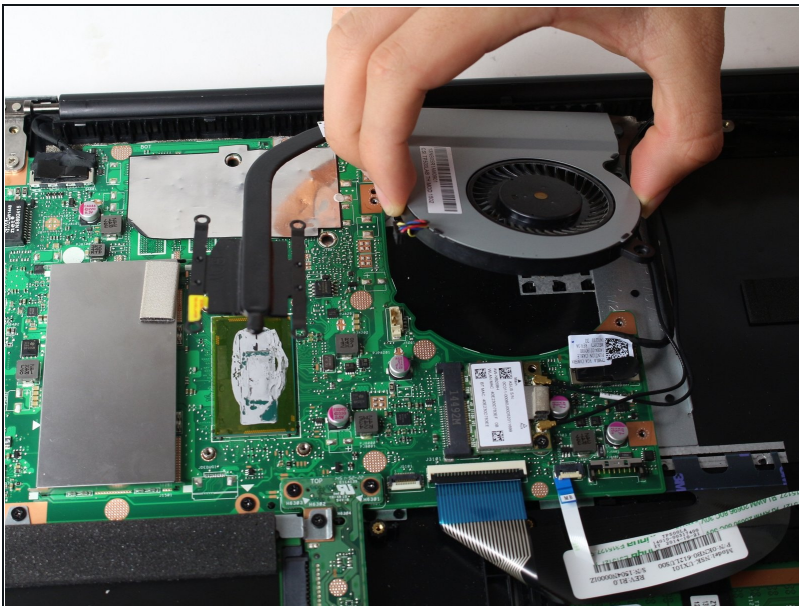
- Unscrew the six 5 mm Phillips #0 screws.

## Step 8



- Grasp the top of the 3-pin connector with [tweezers](#).
- Wiggle the connector until it loosens itself from the motherboard.
- Gently lift the connector from the motherboard attachment.

## Step 9



- Carefully lift the fan off the motherboard.
- ⚠ Attached to the fan is thermal pasting that needs to be reapplied when attaching the fan back to the motherboard. Follow this [guide to reapply thermal pasting correctly](#).

To reassemble your device, follow these instructions in reverse order.