



iMac G5 20" Model A1076 PRAM Battery Replacement

Use this guide to replace your CR2032 PRAM...

Written By: Andrew Bookholt



INTRODUCTION

Use this guide to replace your CR2032 PRAM battery.

TOOLS:

Phillips #1 Screwdriver (1)
Spudger (1)
T6 Torx Screwdriver (1)


PARTS:

CR2032 Lithium Battery (1)

Step 1 — Rear Panel



- Lay the iMac display-side down on a flat surface (putting a cloth under the screen to protect it from bumps).
- Loosen the three Phillips screws securing the rear panel to the iMac.

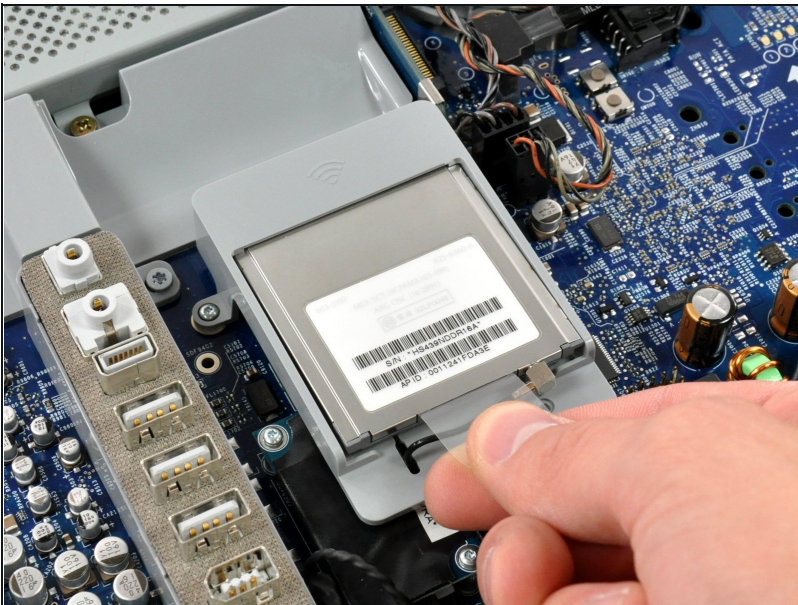
 These screws are captive in the iMac. The center screw will stop turning after about 3.5 turns and the outer screws will stop turning after about 5.5 turns. Do not try to remove these screws from your iMac.

Step 2



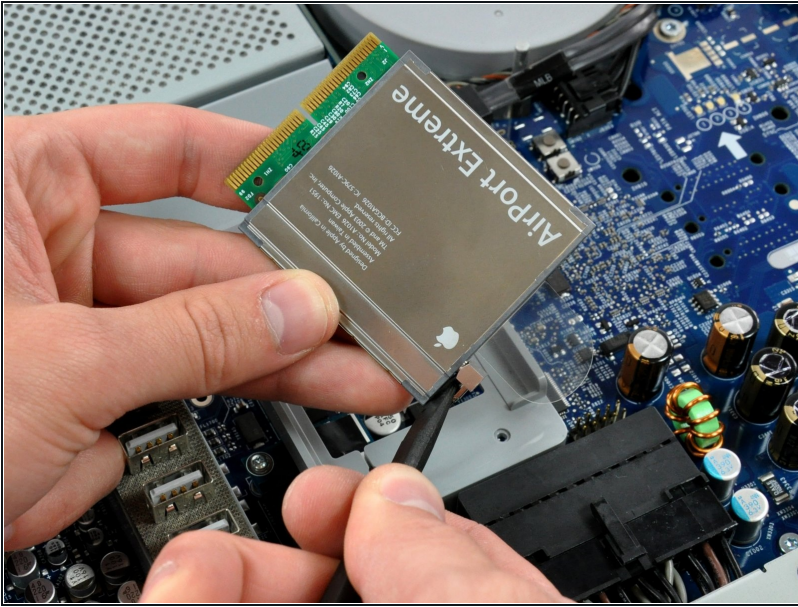
- Lift the rear panel slightly near the bottom of the iMac.
- Pull the rear panel toward yourself and remove it from the iMac.

Step 3 — AirPort Extreme



- Lift the AirPort card slightly by its plastic tab and pull it straight away from its socket.
- ☑ During reinstallation, insert the AirPort card such that the antenna side is nearest the center of the logic board.

Step 4



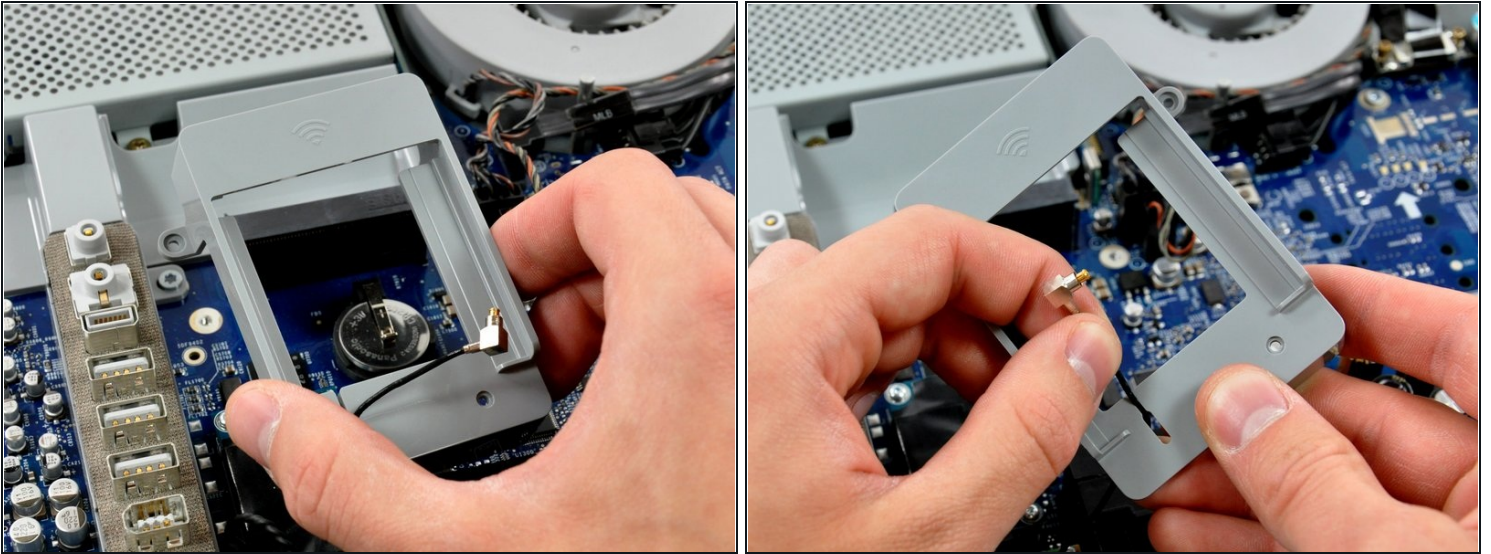
- Insert the flat end of a spudger between the body of the Airport card and its antenna connector.
- Push the spudger away from the Airport card to disconnect the Airport antenna.
- ☑ When reassembling your iMac, be sure to insert the Airport card the way it was before disassembly.

Step 5 — PRAM Battery



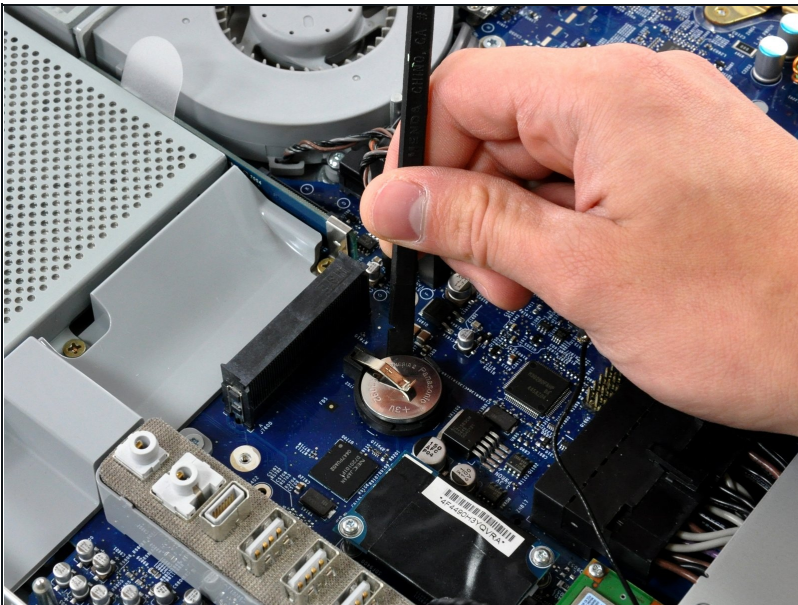
- Remove the two 5.5 mm T6 Torx screws securing the Airport bracket to the logic board.

Step 6



- Slightly lift the AirPort bracket off the logic board.
- De-route the AirPort antenna through the slot in the AirPort bracket.

Step 7



- Use a spudger to slide the PRAM battery out from under its socket's metal clip.

⚠ Do not bend the metal clip up, as it is brittle and will break.

To reassemble your device, follow these instructions in reverse order.