



Smartab STJR700 Charging Port Replacement

Replacing charging port on Smartab STJR700 children's tablet.

Written By: Thi Le



INTRODUCTION

This guide will show you how to replace the charging port in a Smartab STJR700 tablet. After determining all options have been attempted and the tablet still doesn't charge, then refer to this repair guide. Prior to fixing the device, ensure that there aren't any other hardware issues. Hardware issues include damages in the charger and faulty battery.



TOOLS:

- [Phillips #000 Screwdriver](#) (1)
 - [Metal Spudger](#) (1)
 - [Tweezers](#) (1)
-

Step 1 — Charging Port



- Power off the device by holding down the lock button. Remove the case from the tablet and place it face down.

Step 2



- Unscrew all four corner screws using the PH000 screwdriver head found in the iFixit kit.

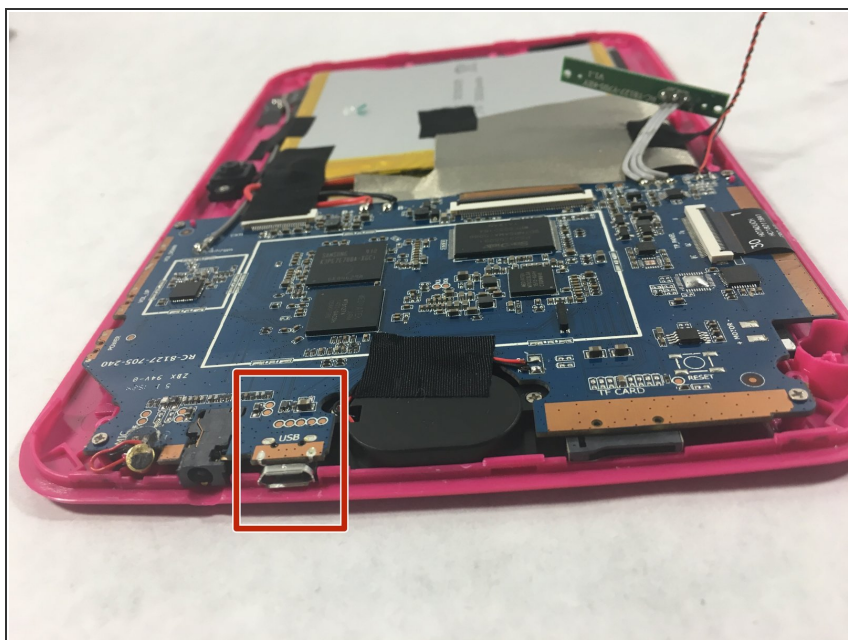
Step 3



⚠ CAUTION: Avoid touching the display.

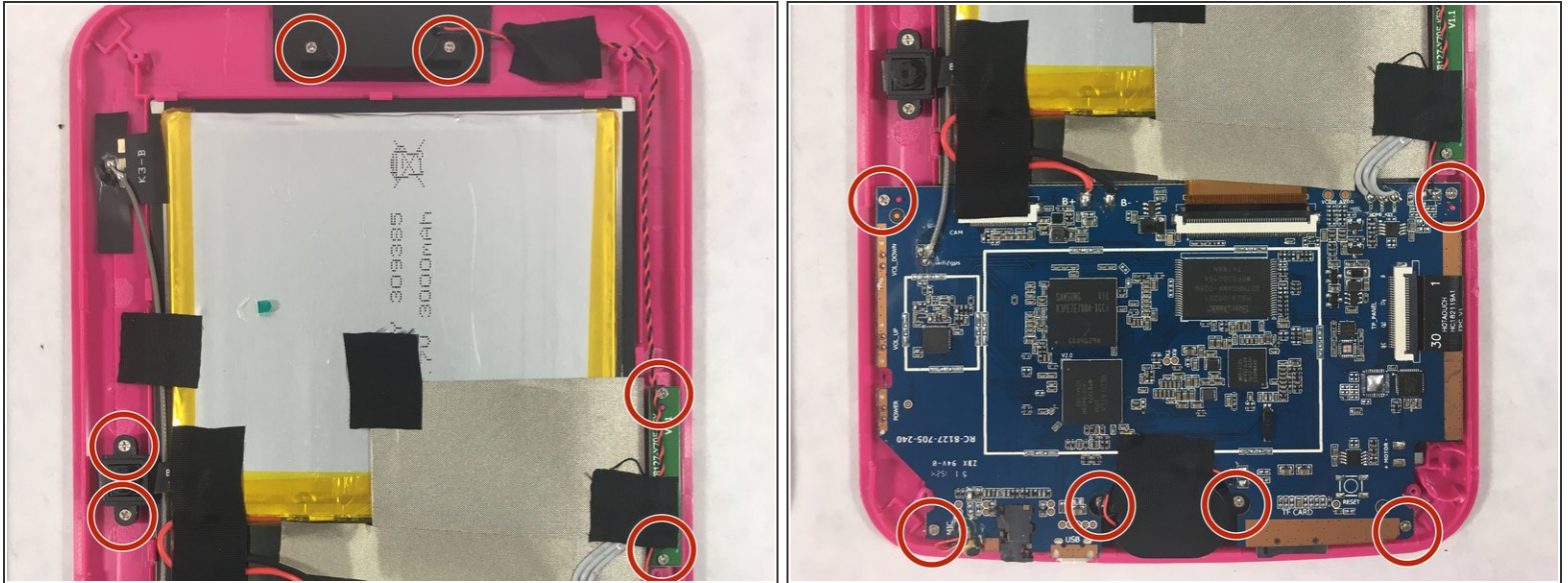
- Pry open the tablet using a metal spudger. Set aside the back panel.

Step 4



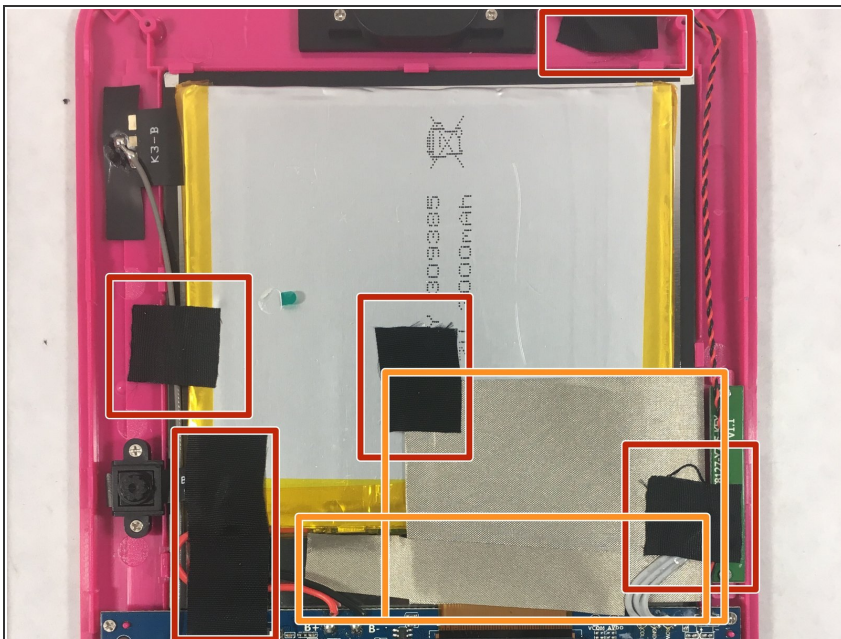
- Locate the charging port.

Step 5



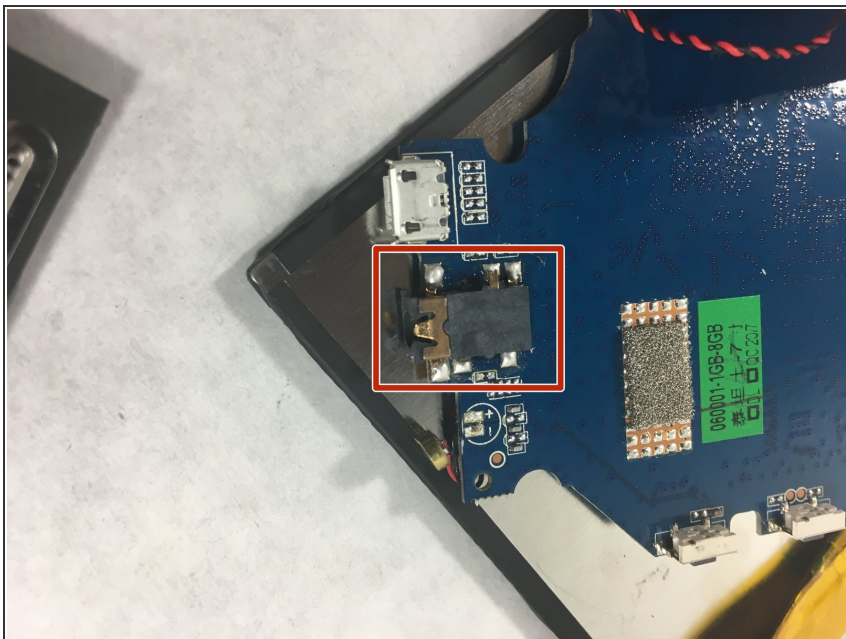
- Unscrew all the labeled screws using the PH000 screwdriver head.

Step 6



- Remove all pieces of tape using the tweezers provided in the iFixit kit.
- Remove the two ribbon cables affixed to the camera.

Step 7



- Remove the motherboard component from the screen and display.
- ⓘ Because the charging port is soldered onto the motherboard, the motherboard must be replaced by one specifically made for the Smartab STJR700.

To reassemble your device, follow these instructions in reverse order.