



Bowers and Wilkins T7 Motherboard Replacement

Replacing a faulty or damaged motherboard.

Written By: Adam Kosianowski



INTRODUCTION

Use the guide to learn how to replace the motherboard for the Bowers and Wilkins T7 Bluetooth Speaker.




TOOLS:

- [JIS Driver Set](#) (1)
 - [Tweezers](#) (1)
 - [Jimmy](#) (1)
 - [iFixit Opening Tools](#) (1)
 - [Nylon spudger](#) (1)
-

Step 1 — Access Panel



 As with all electronic devices, make sure your device is powered off before you begin.

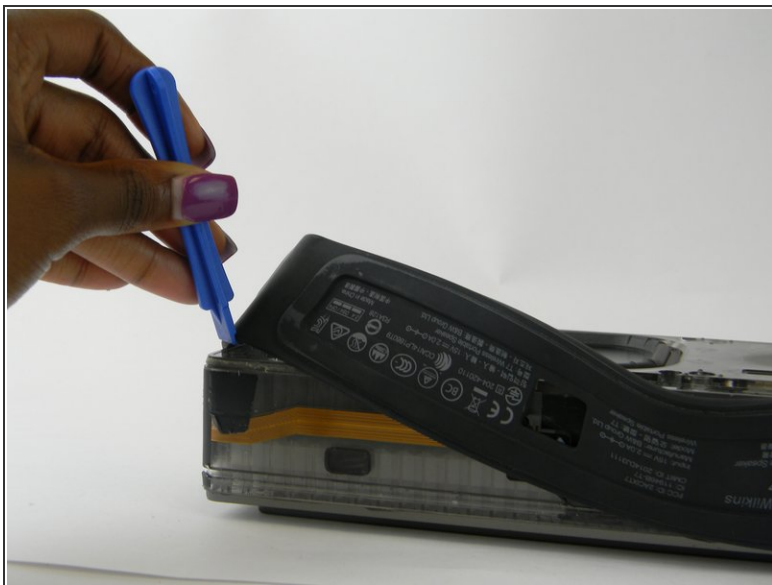
- Gently lift up the access panel; it should easily "pop" open.


Step 2




- Remove 14mm screws on the front panel with a J1 Phillips head screwdriver.
- There are 8 screws in total.

Step 3

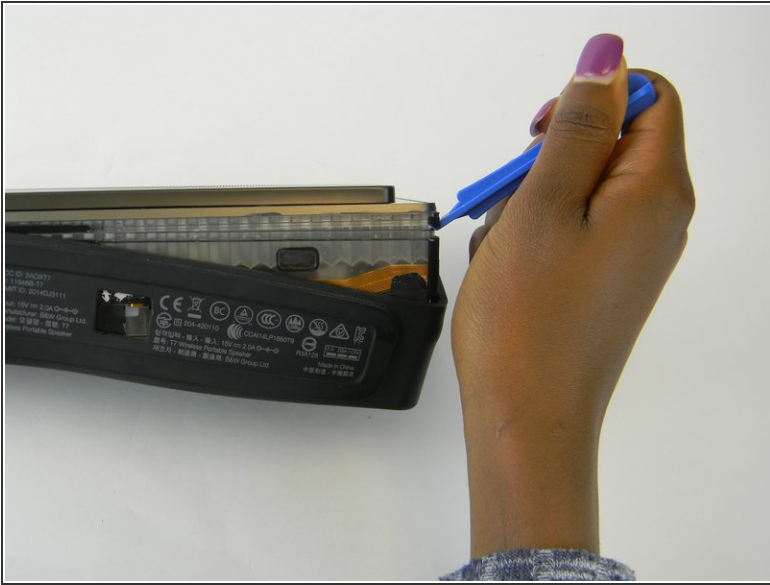


 Be gentle, the rubber seal is fragile and easy to tear, resulting in cosmetic damage to your device.

- Using the iFixit Opening Tool, carefully pry off the rubber seal around the sides.

 The seal is held by adhesive, if this is proving difficult you can use a heat gun to help the process.

Step 4



- i** The cover is the most difficult part to remove. As you work, pry continuously, moving the tool around the device, working it a little further as you go.
- Using the iFixit Opening Tool, pry open at the seam found under the rubber seal.
 - As the cover starts to come off, you can lift up using your hand.

Step 5



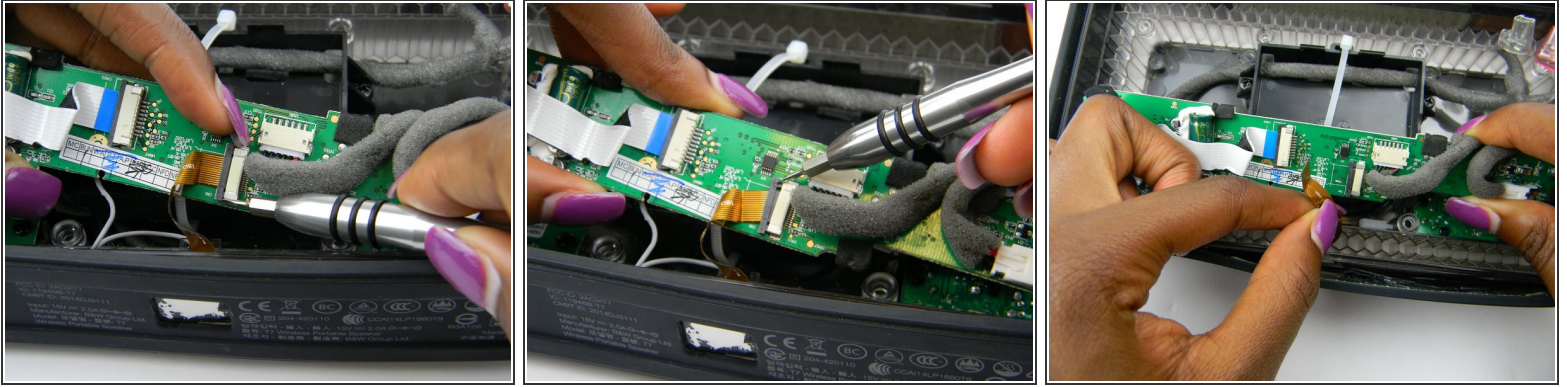
- Gently squeeze the internal locking mechanism inside the red and white terminals with either your fingers or a pair of precision tweezers.
- While squeezing the internal locking mechanism, pull back the terminal.
- Repeat this process for the second speaker.

Step 6 — Motherboard





- Remove the leftmost 14mm screw with the J1 screwdriver tip.
- Remove the rightmost 14mm screw with the J1 screwdriver tip.
- With the screws removed, the motherboard is now loose.

Step 7



- Ensure you position your fingers, or a screwdriver tool with the 0.8 tip, in a position on the outside of the black tab.

 It is advisable to use a nylon spudger to accomplish this task, because using a metal screwdriver like the one used in the image, can be unnecessarily dangerous around delicate connectors and the motherboard in general.

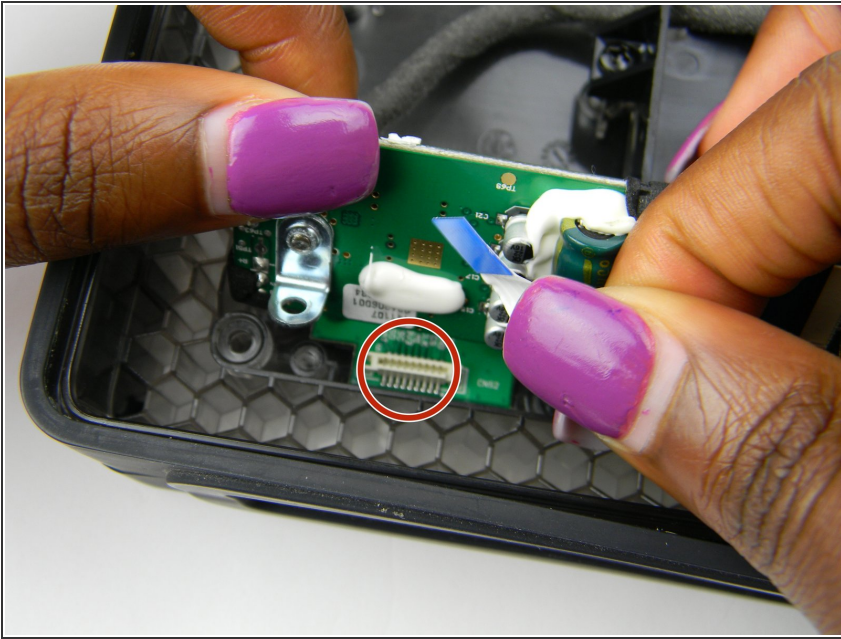
 When working with electronics, it's important to choose a tool that's ESD-safe to avoid accidental damage.

- Slide the black tab out so the cable is able to be removed.

- At this point, the cable is removed.

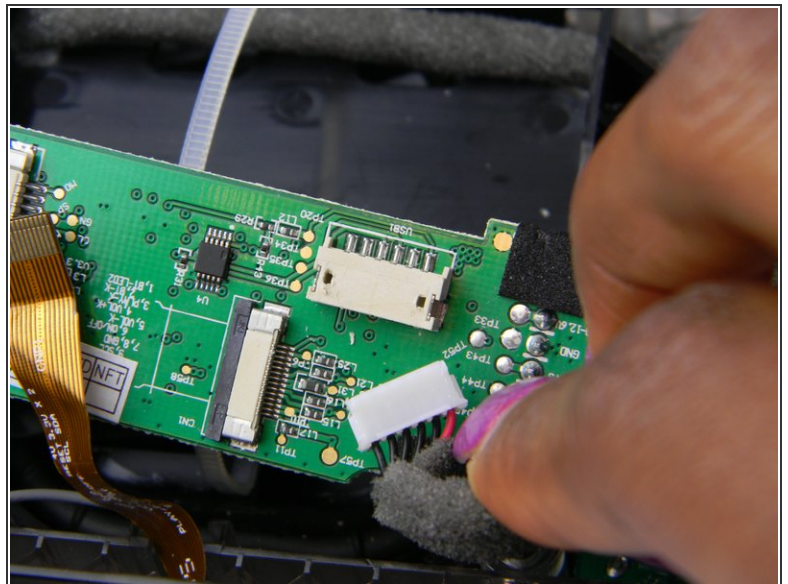
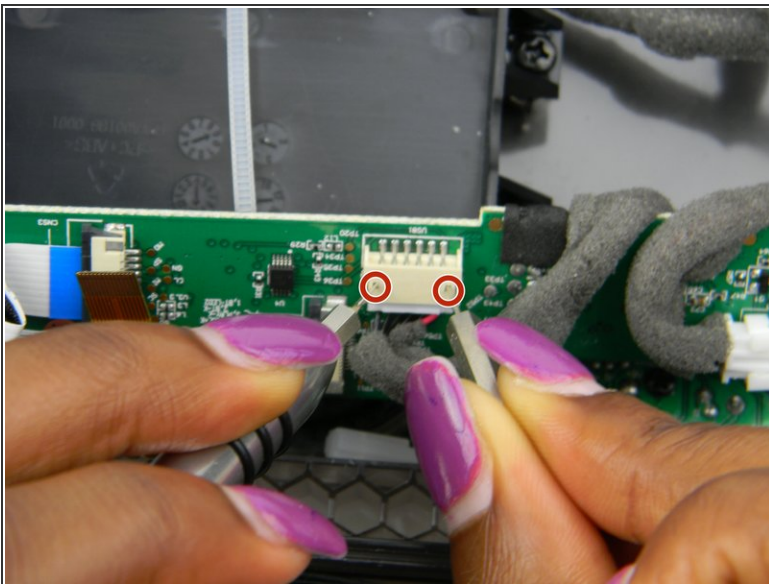
 These ports are difficult, as you need to simultaneously push the black tab while pulling the cable.

Step 8



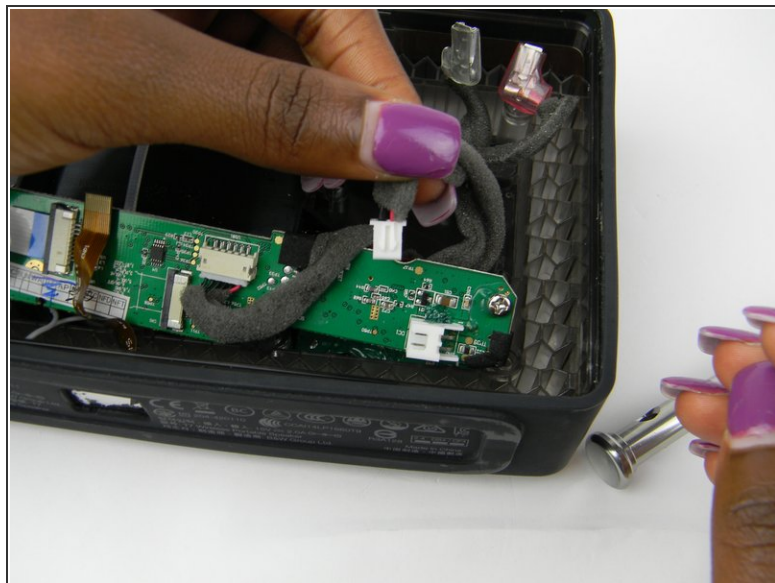
- Pull out the cable that is attached to a port under the motherboard.

Step 9



- Use the 0.8 and 1.0 screwdriver tips to press on the pins to release this cable.
- The cable should slide out when the releases are pressed.
- ⓘ This cable can be difficult, as you need to simultaneously push the pins as you pull out the cable.

Step 10



- Use the 0.8 screwdriver tip to press in the tabs keeping this cable in place.
- The cable should easily slide out.

Step 11



- Rotated the motherboard to access this cable.
- Use your fingers to pull out the cable.

Step 12



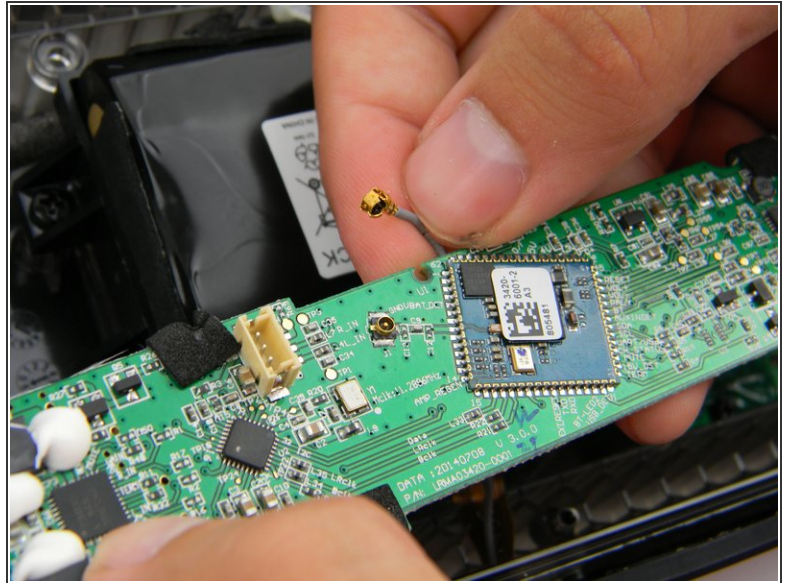
- The battery cable needs to be removed.
- Use your fingers to pull the cable out of the port.

Step 13



- The red cable has a tab to press in order to release the cable.
- Slide out the cable while continuing to press and hold the tab.

Step 14



- Rotate the motherboard to access the last cable.
- Pull on the gold connector to disconnect the cable.

To reassemble your device, follow these instructions in reverse order.