



# Smartab STJR700 Back Camera Lens Replacement

If the main camera glass of your Smartab...

Written By: Fatu Woodson



## INTRODUCTION

If the main camera glass of your Smartab STJR700 camera is broken, you can either remove and replace the glass on the lens, or replace the whole camera lens.

Removing the glass on the lens while the Smartab STJR700 is still assembled may cause small pieces of glass to fall into the camera, but it is a faster method that requires less disassembly of the device.

Replacing the whole camera lens is a longer process, and requires removing the back panel, but it is less likely to damage the camera itself. This procedure includes replacing the glass lens and the camera bezel, and will require replacement rear glass adhesive.



### TOOLS:

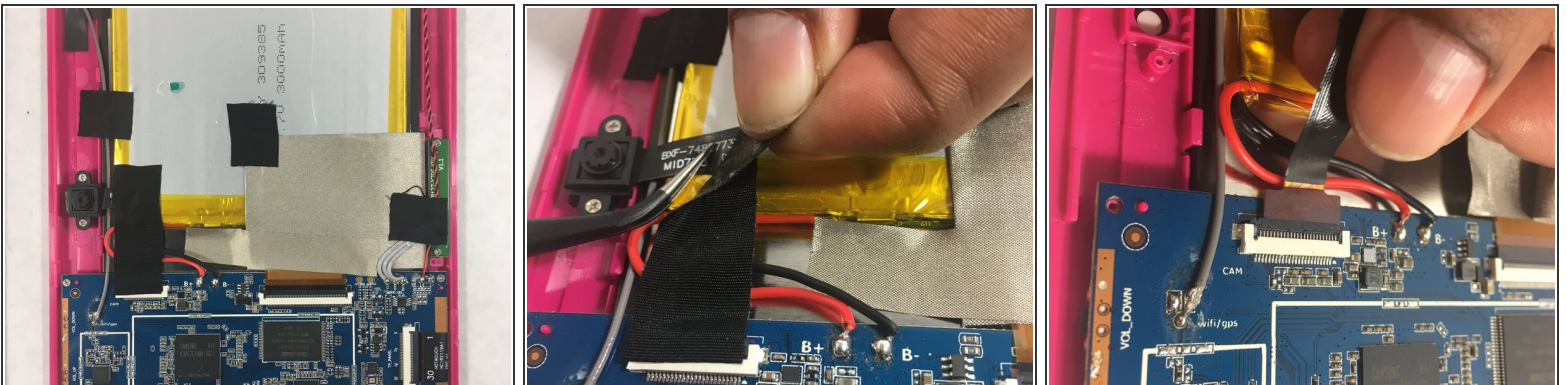
- [Mako Driver Kit - 64 Precision Bits](#) (1)
  - [Tweezers](#) (1)
  - [Soldering Iron](#) (1)
-

## Step 1 — Back Camera Lens



- The first thing you want to do is remove the back cover. Using your screwdriver in your tool kit, start by removing the screws on the back of the Smartab.
- After the screws are removed, carefully remove the cover to expose the inside of the tablet.

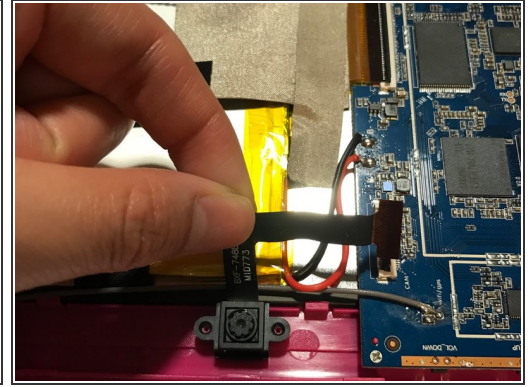
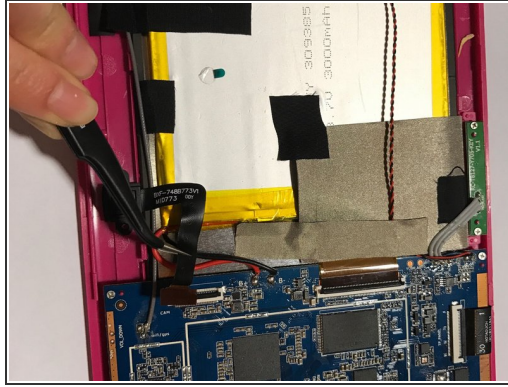
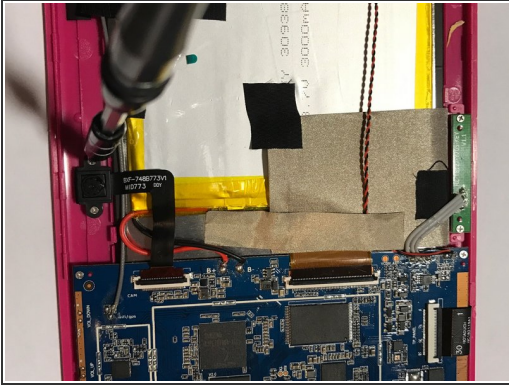
## Step 2



- When you open the tablet, you will see the several components that help it to function.
- While observing the other components, you will see that the camera is kept in place by screws. The digitizer, is held in place using black tape.
- When the tape is peeled back, you see that the digitizer is also connected to the motherboard.



## Step 3



- Using the same screwdriver, begin to unscrew the camera from the tablet.
- Using tweezers from your tool kit, begin to remove the digitizer from the hard drive.
- Once that is removed, and the camera is unscrewed, you can remove them completely from the tablet.
- Add in replacement parts using a reverse method. You will need a soldering tool to reconnect the digitizer.

## Step 4



- To change the actual camera lens follow the following steps.
- Remove the broken glass using tweezers. If your new lens has adhesive on it, ensure you remove all the old adhesive from the frame so the lens doesn't stick out unnecessarily and so it forms a tighter seal.
- Once the glass is removed, you can start to place the new camera lens. Peel off the upper film and assemble the glass with the ring.

To reassemble your device, follow these instructions in reverse order.