



Canon PowerShot ELPH 150 IS Back Plate/Menu Button Replacement

This guide will help users remove the back...

Written By: Alex Larrimore



INTRODUCTION

This guide will help users remove the back plate and the menu buttons on the Canon PowerShot ELPH 150 IS camera in six simple steps!

TOOLS:

Phillips #00 Screwdriver (1)

Spudger (1)

Step 1 — Back Plate/Menu Buttons



- Locate the ON/Off button on the top of the camera and hold it down until the screen and all lights on the camera go dark.

Step 2



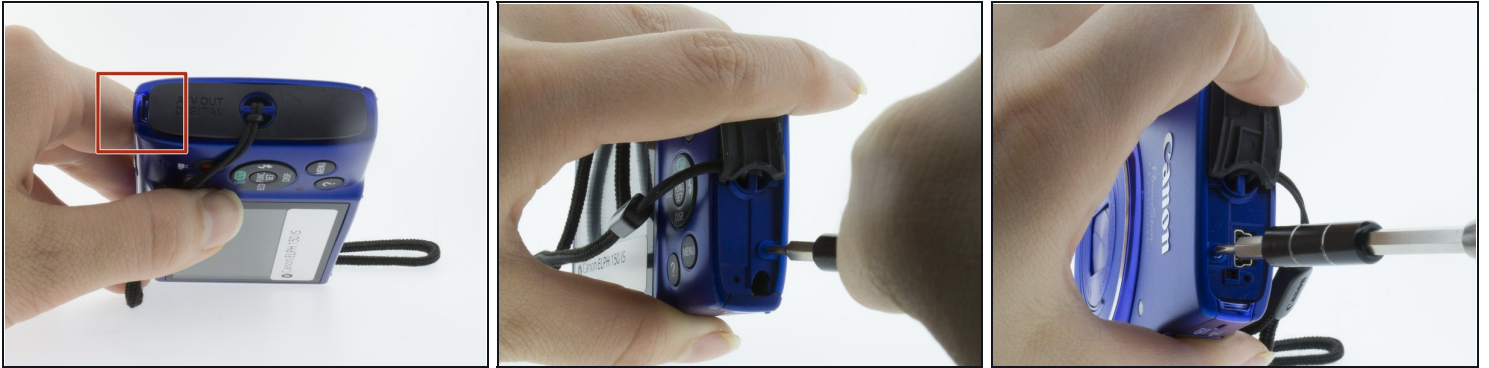
- Locate the back plate of the camera (contains the LCD screen and menu buttons).

Step 3



- To remove the back plate you will need to unscrew the 6 support screws securing it to the camera.
- Use a Phillips #00 screwdriver to remove the first 2 screws on the bottom of the camera.

Step 4



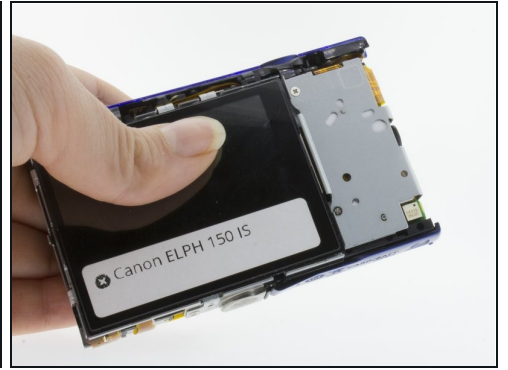
- Remove the next 2 screws located behind the AV port using the same Phillips #00 screwdriver.

Step 5



- Use a Phillips #00 screwdriver to remove the final 2 screws from the blue side panel.

Step 6



- Use your hands or a spudger to gently pry the front and back case apart along the seams on the bottom of the camera.
- Completely remove the back plate.

To reassemble your device, follow these instructions in reverse order.