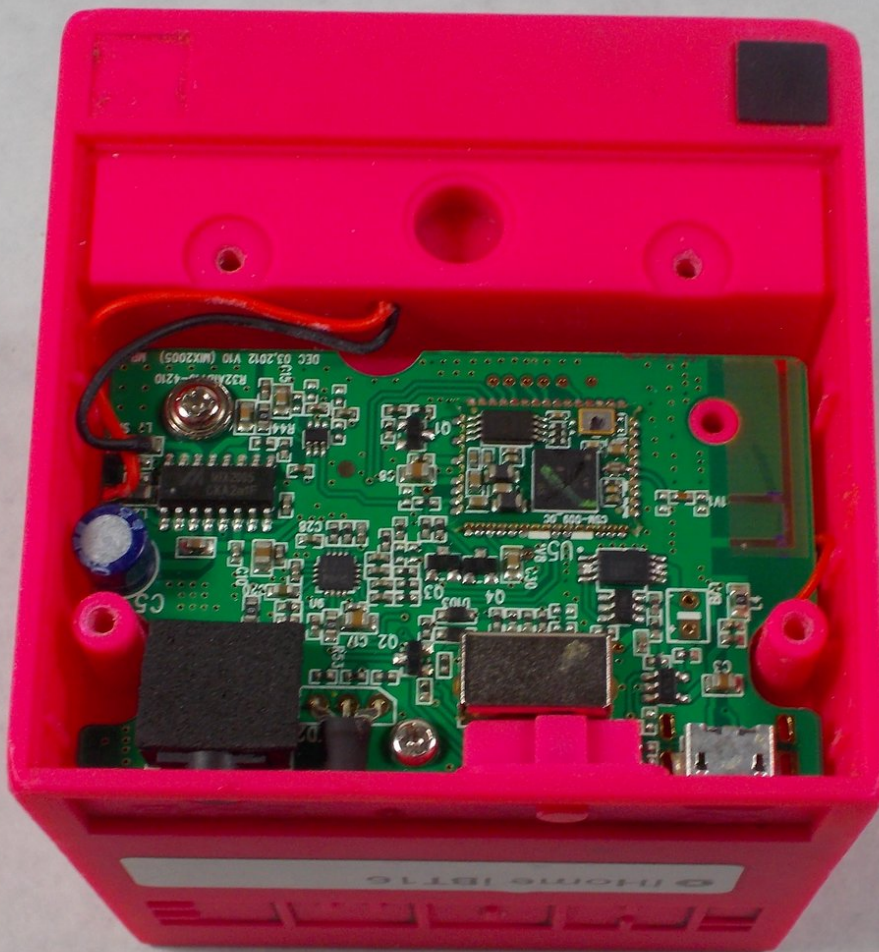




iHome IBT16 Auxiliary Port Replacement

This guide will step you through the process of replacing the auxiliary port on the iHome iBT16.

Written By: Ryan Edwards



INTRODUCTION

Use this guide to replace the auxiliary port on the iHome iBT16.



TOOLS:

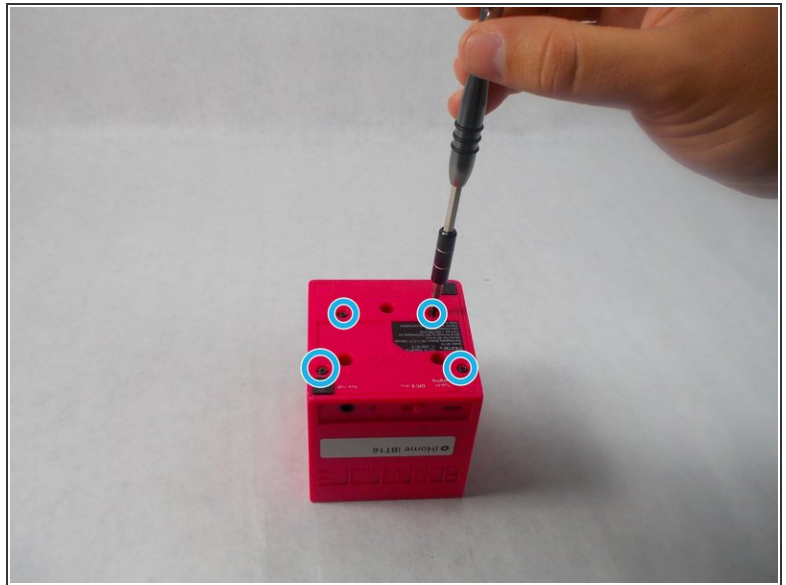
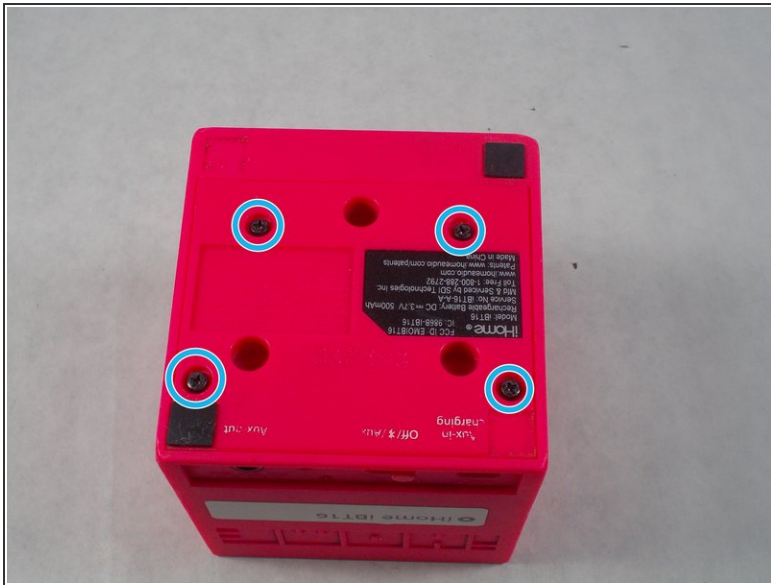
- [Phillips #00 Screwdriver](#) (1)
- [iFixit Opening Tools](#) (1)
- [Soldering Iron](#) (1)
- [Desoldering Braid](#) (1)






PARTS:

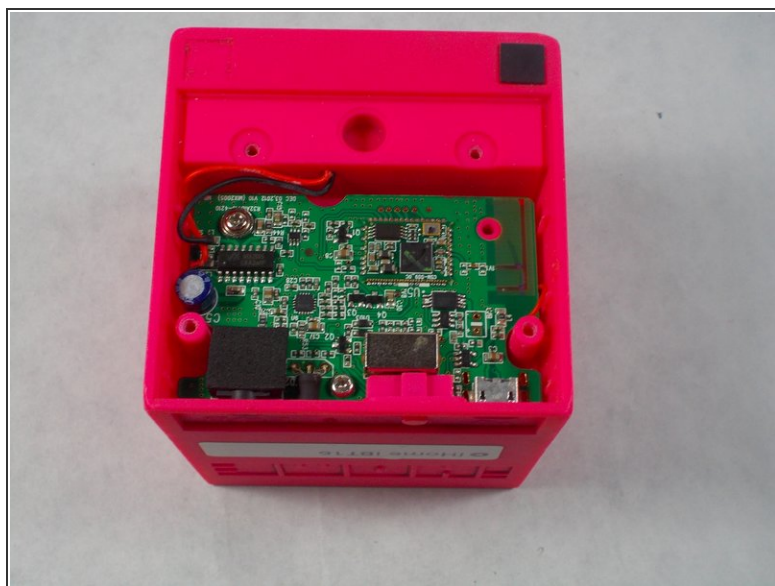
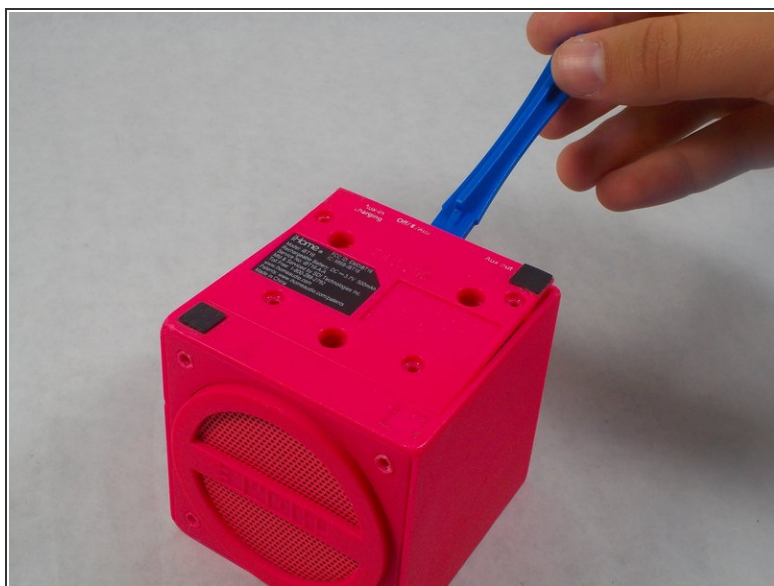
- [iHome iBT16 Auxiliary Port](#) (1)

Step 1 — Base Plate



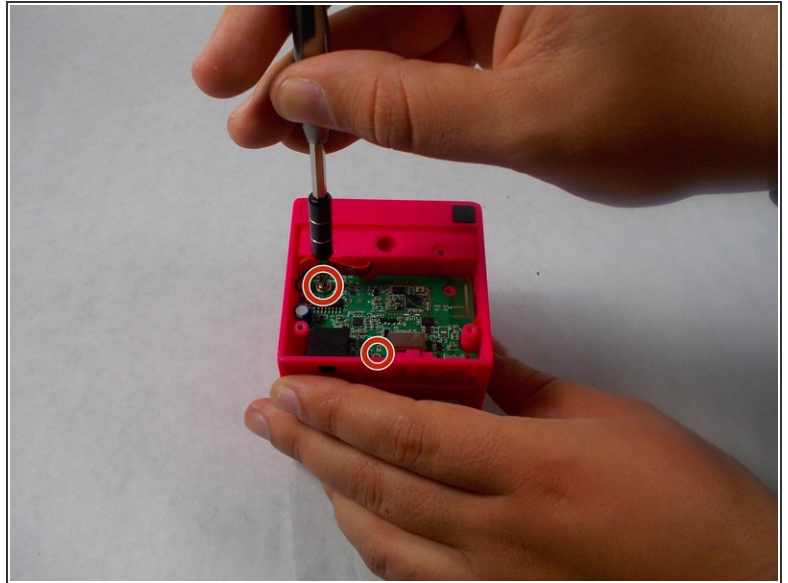
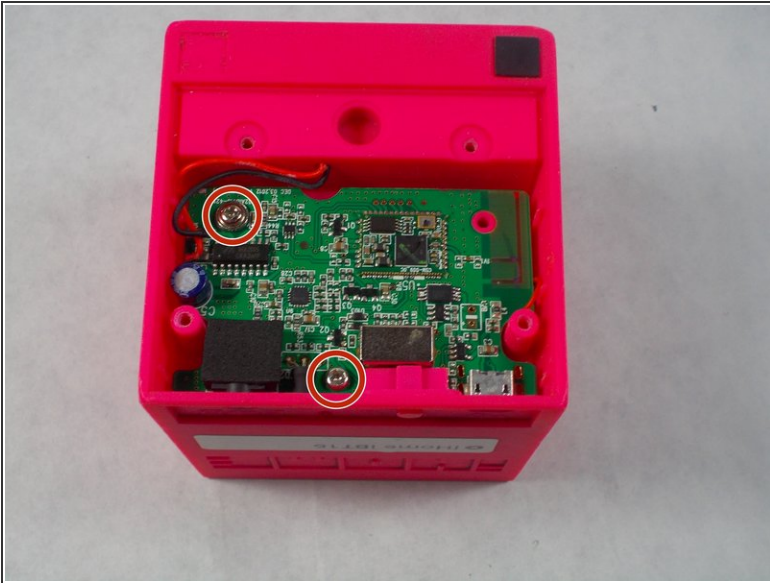
-  Make sure to flip the device over to get into the correct orientation
-  Using the Philips #00 Screwdriver, unscrew and remove the four 9mm black screws on the base plate of the device.
-  Make sure to keep these screws in a safe location so you don't lose them

Step 2



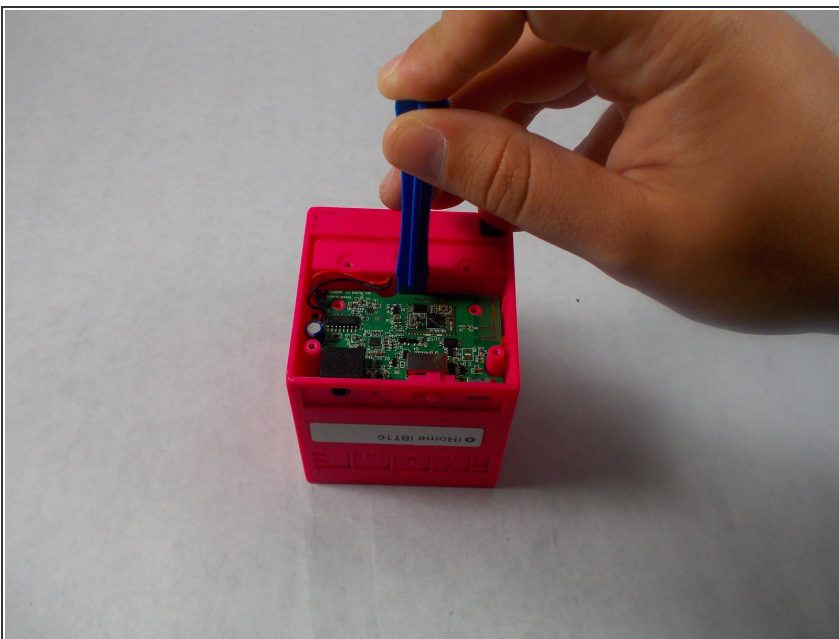
- Using the plastic opening tool, insert into the crack between the base plate and the main body of the device
- Using a lever like motion, push the opening tool down thus lifting the plate
- ⓘ You will need to use your fingers to lift the base plate off the main body of the device
- ✦ The motherboard is directly underneath the base plate

Step 3 — Auxiliary Port



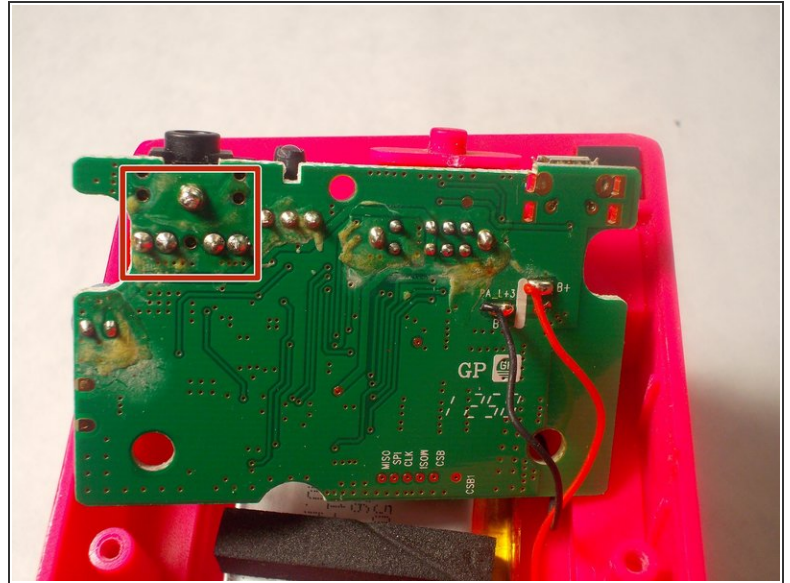
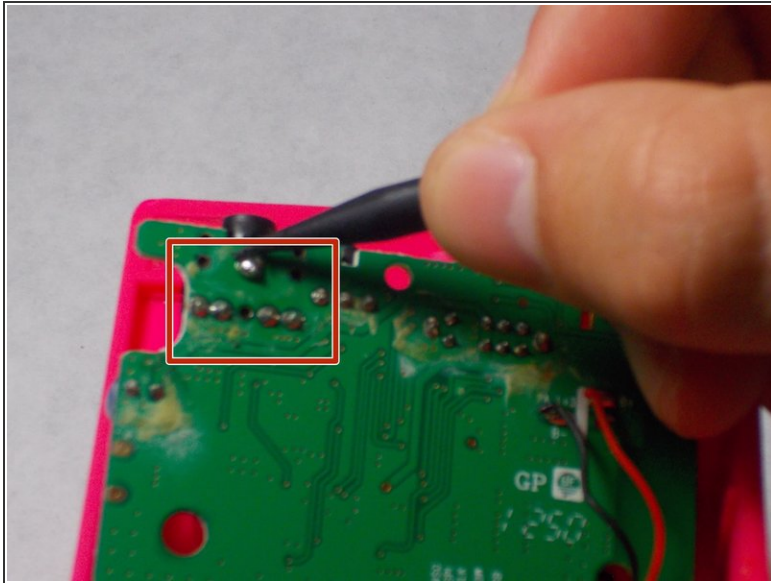
- Using the Philips #00 screwdriver, unscrew and remove the two silver 10mm screws holding the motherboard
- ⓘ Don't misplace the screws! Keep them in a safe place while working on the device
- ⚠ Make sure to ground yourself prior to continuing at this point

Step 4



- Using the plastic opening tool, pull the motherboard out of the casing
- ⚠ Make sure to lift it out at an angle to the back, as the plastic power switch is attached to the board and can be broken

Step 5



- Desolder the 5 points holding the auxiliary port to the motherboard
- Once complete, it's as simple as lifting the port from the board

To reassemble your device, follow these instructions in reverse order.