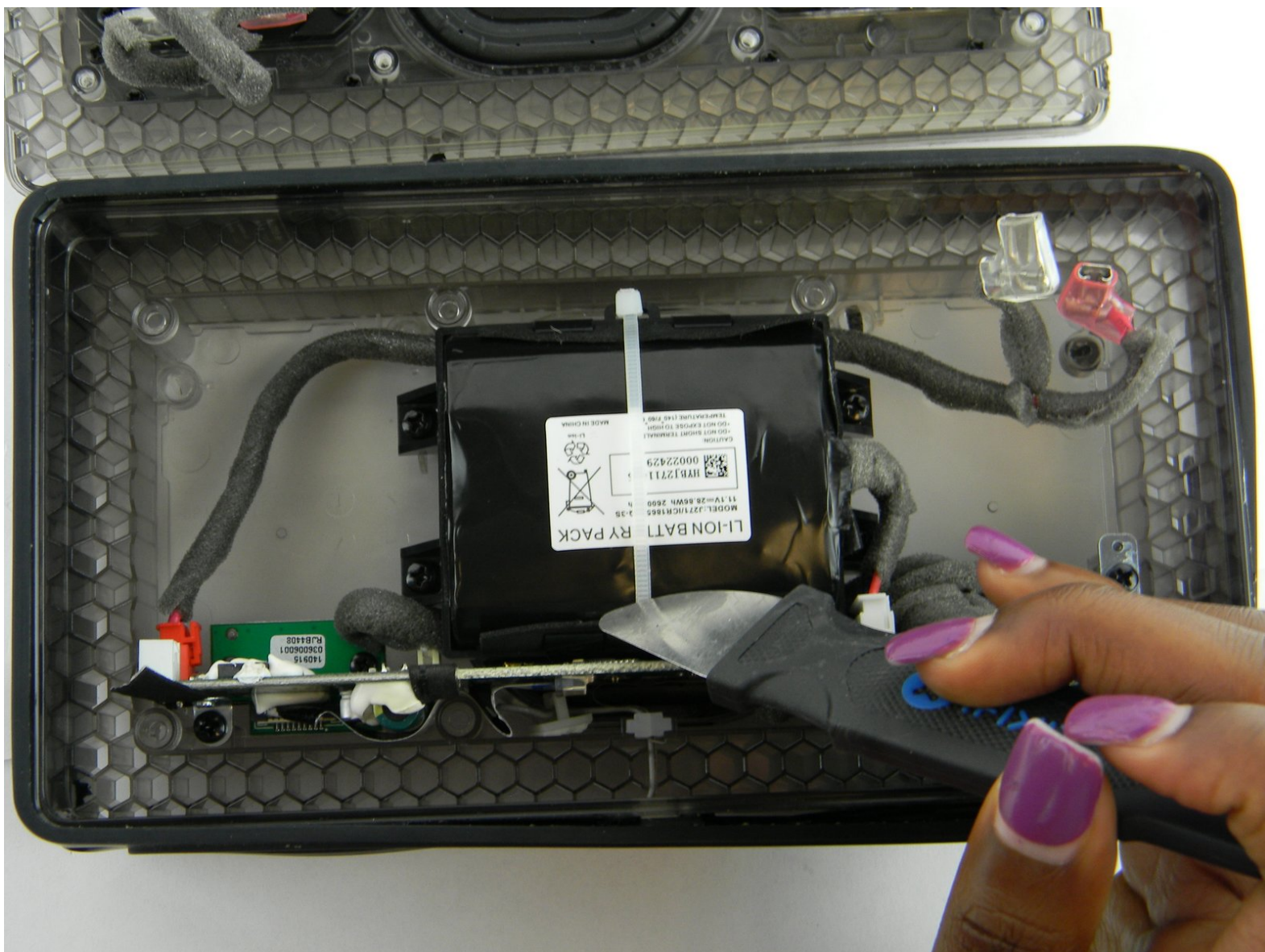




# Bowers and Wilkins T7 Battery Replacement

Replace the battery for a Bowers and Wilkins T7 Bluetooth Speaker.

Written By: Bertrand Plummer



---

## INTRODUCTION

Use this guide to learn how to replace your battery for the Bowers and Wilkins T7 Bluetooth Speaker.

---



### TOOLS:

- [JIS Driver Set](#) (1)
  - [Tweezers](#) (1)
  - [Jimmy](#) (1)
  - [iFixit Opening Tools](#) (1)
-

## Step 1 — Access Panel



⚠ As with all electronic devices, make sure your device is powered off before you begin.

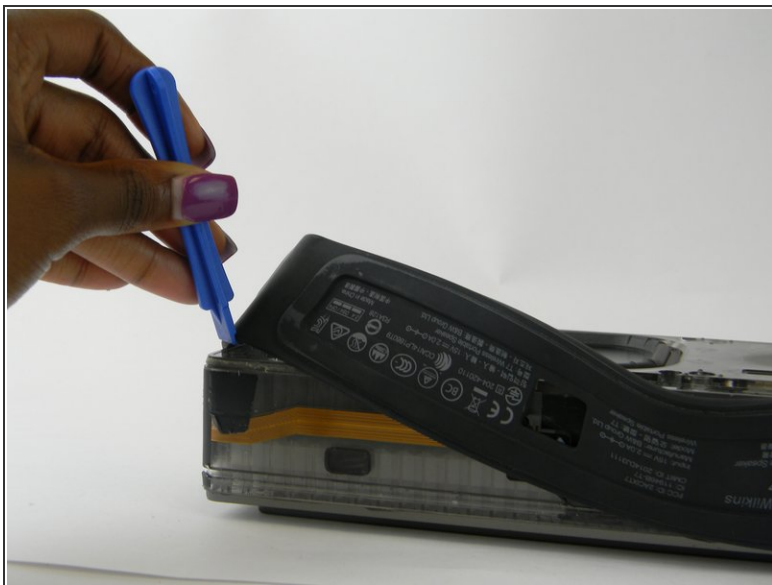
- Gently lift up the access panel; it should easily "pop" open.

## Step 2



- Remove 14mm screws on the front panel with a J1 Phillips head screwdriver.
- There are 8 screws in total.

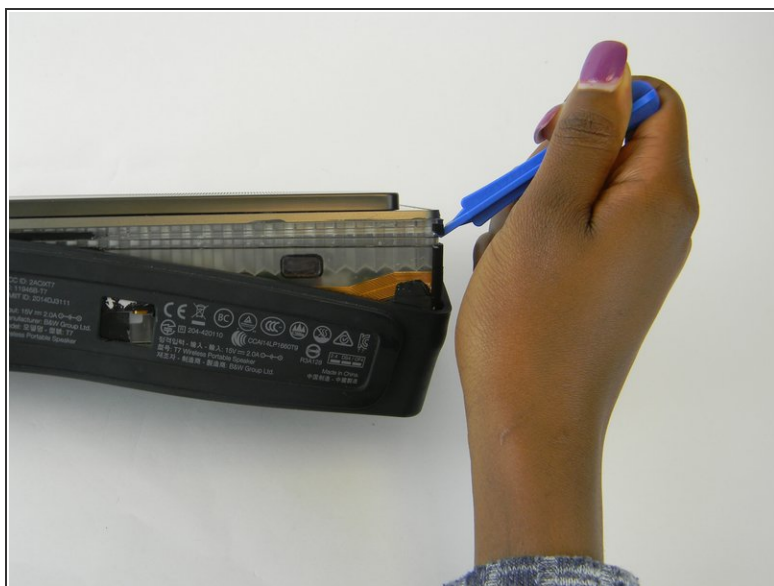
### Step 3



- ⚠ Be gentle, the rubber seal is fragile and easy to tear, resulting in cosmetic damage to your device.
- Using the iFixit Opening Tool, carefully pry off the rubber seal around the sides.
- ⓘ The seal is held by adhesive, if this is proving difficult you can use a heat gun to help the process.



## Step 4



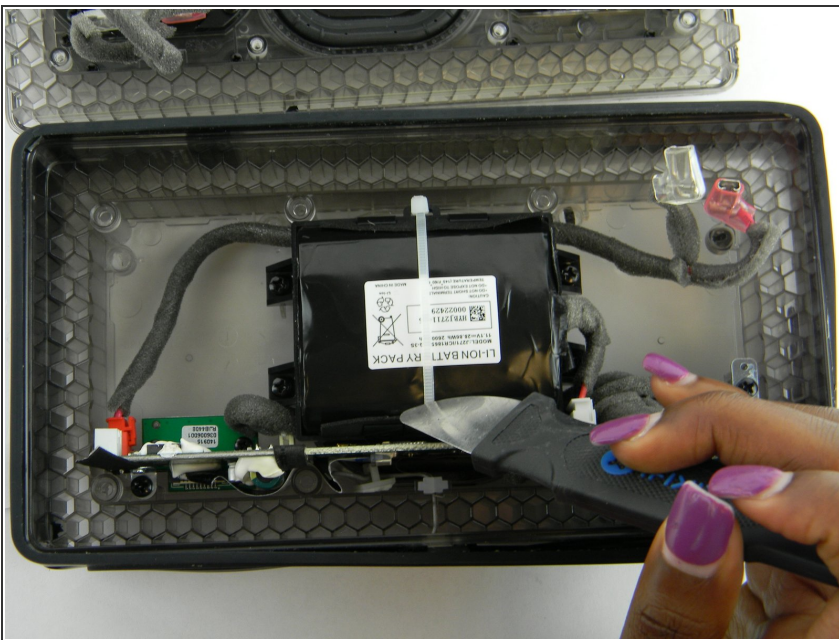
- i** The cover is the most difficult part to remove. As you work, pry continuously, moving the tool around the device, working it a little further as you go.
- Using the iFixit Opening Tool, pry open at the seam found under the rubber seal.
  - As the cover starts to come off, you can lift up using your hand.


## Step 5



- Gently squeeze the internal locking mechanism inside the red and white terminals with either your fingers or a pair of precision tweezers.
- While squeezing the internal locking mechanism, pull back the terminal.
- Repeat this process for the second speaker.

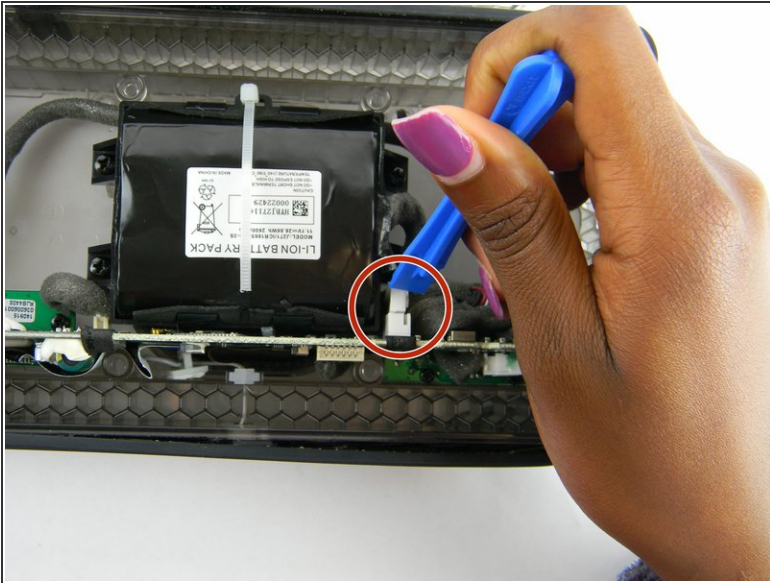
## Step 6 — Battery



- Using a cutting tool such as a Jimmy steel blade or wire cutter, cut the cable tie surrounding the battery.
-  Be careful not to damage the battery while cutting the cable tie surrounding the battery.

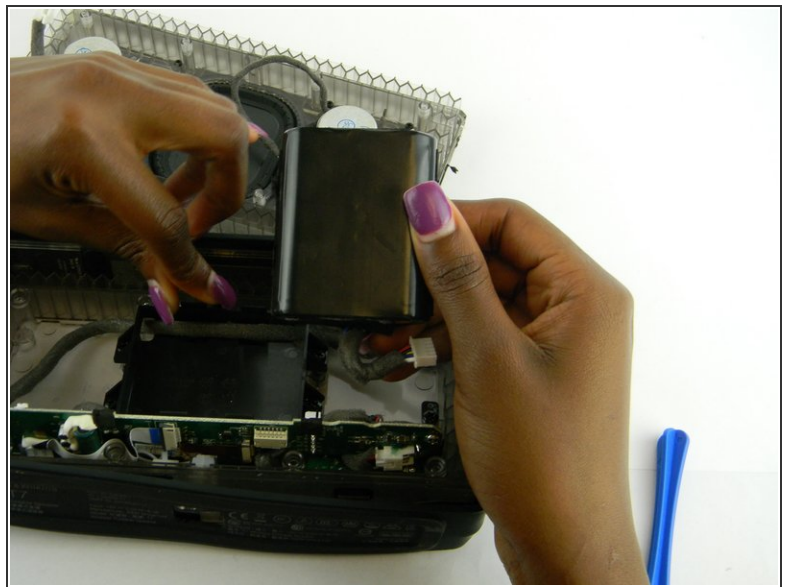
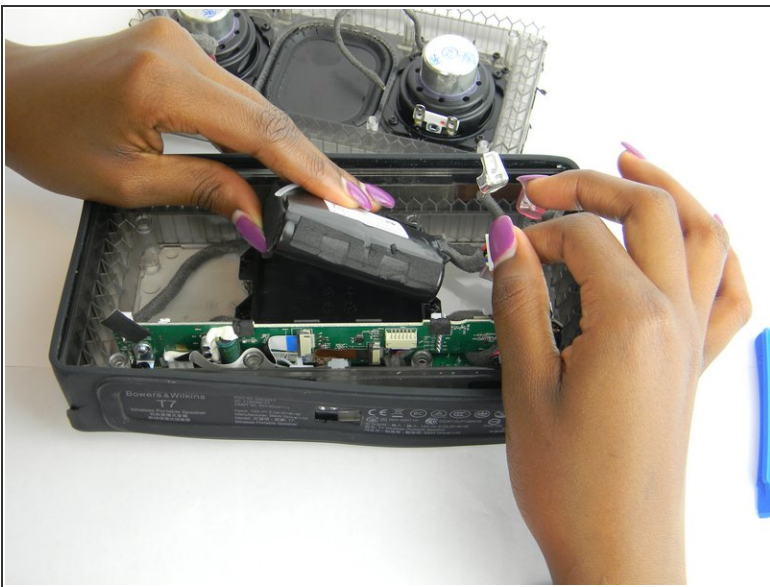


## Step 7



- Using the ifixit Opening Tool, pry out the battery power supply connector.
- Pull and remove the battery power supply connector.

## Step 8



- After disconnecting the power supply connector, pull the battery out of its case.

To reassemble your device, follow these instructions in reverse order.