



# HP Mini 210-1199DX Wireless Card Replacement

Wireless card with weak connection. Wireless card needs replacement.

Written By: Phillip Winston



---

## INTRODUCTION

In this guide you'll be able to locate and remove or change out the Wireless Card of the HP Mini 210-1199DX.

---

### TOOLS:

- [Spudger](#) (1)
  - [Phillips PH000 Screwdriver](#) (1)
  - [Tweezers](#) (1)
-

## Step 1 — Battery



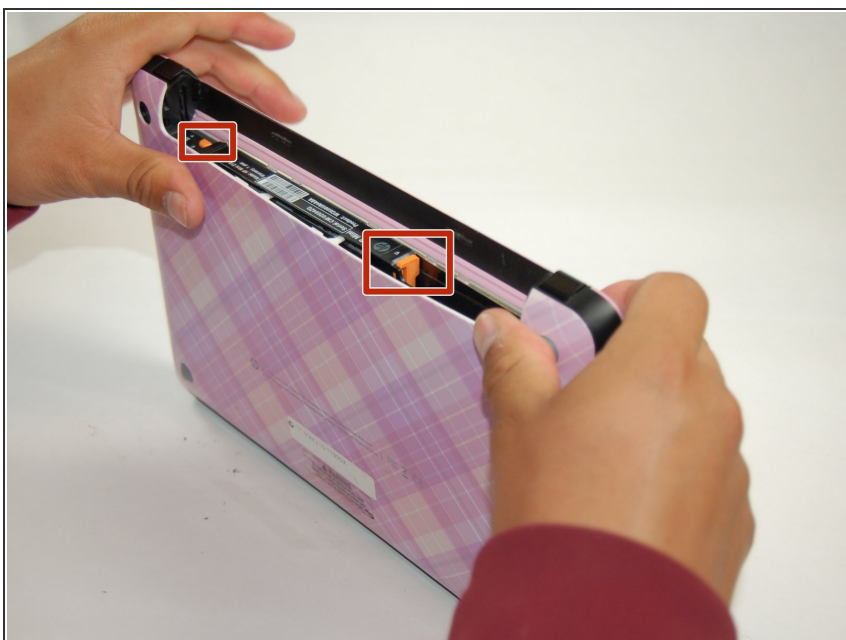
- Unplug the netbook.
- Secure the netbook in a upright position.
- Slide the plastic battery latch that secures it into the netbook.
- Keep thumb secure on the right tab as you begin to remove the battery.

## Step 2



- Remove the battery from the device.

## Step 3 — Bottom Cover



- Press down on the two orange buttons to release.
- If the case does not pop off, begin to use Spudger to pry the case off the back.

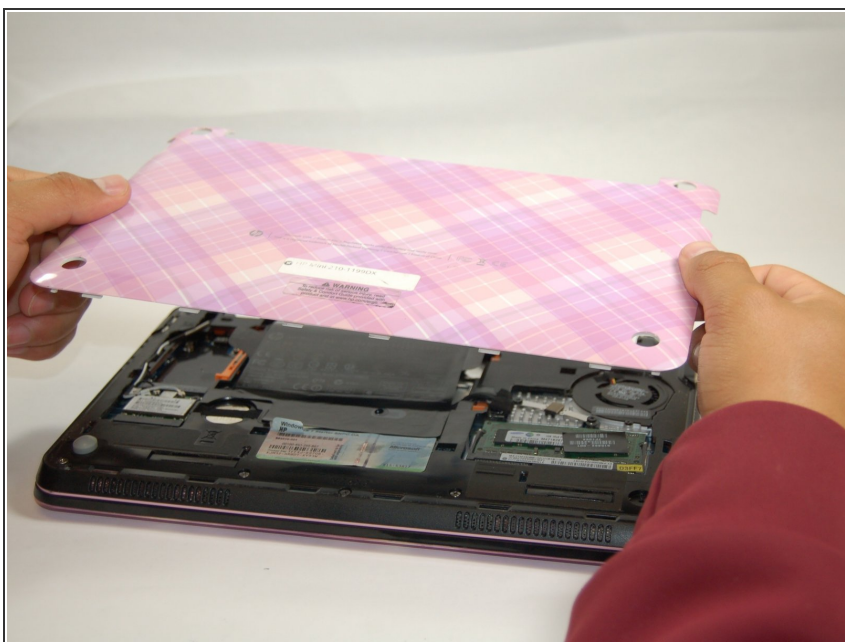


## Step 4



- Place the spudger on corners and openings in order to begin removal of the back.
- Continue this on all corner until the case comes fully off of the back.

## Step 5



- Pull the case off of the device

## Step 6 — Wireless Card



- Locate the Wireless Card.

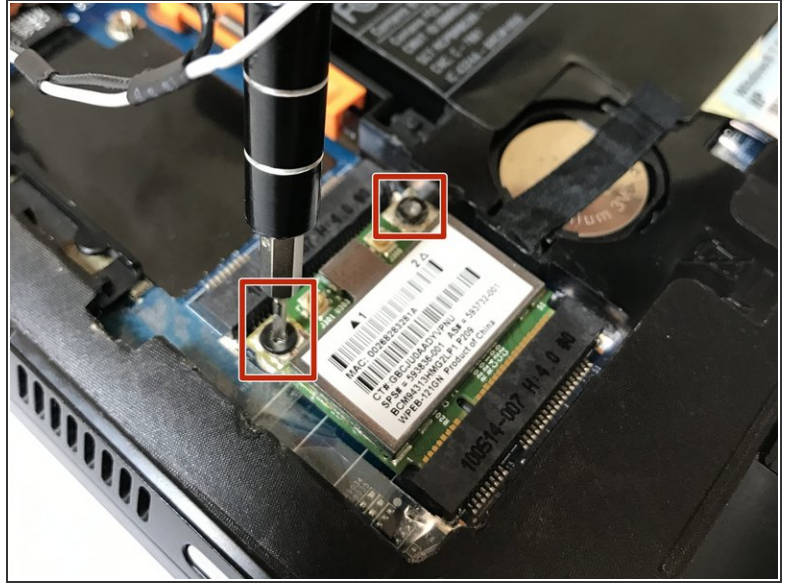
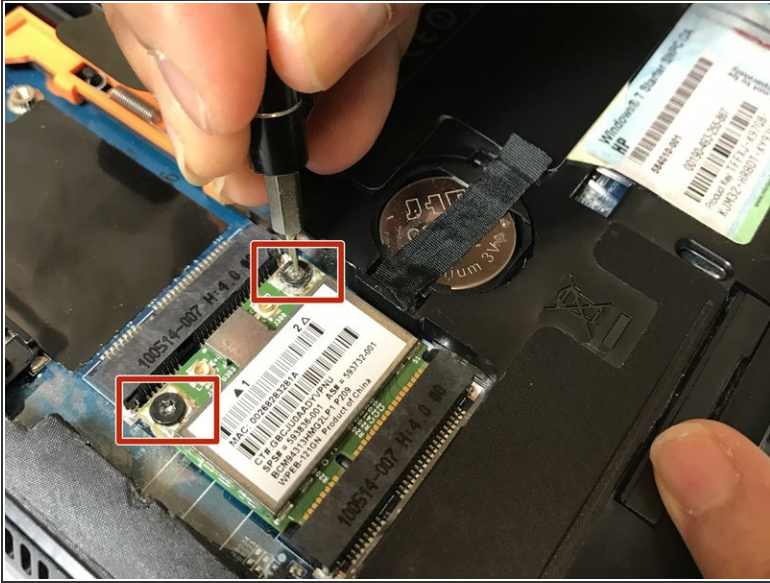
## Step 7



- With fingers or tweezers, carefully pull the black and white wire connectors from their sockets and move them to the side.



## Step 8



- With a Phillip's Screwdriver, firmly but slowly remove the two screws from the top of the wireless card.
- Be careful not to strip the nail head.

## Step 9



- Pull the wireless card out.

To reassemble your device, follow these instructions in reverse order.