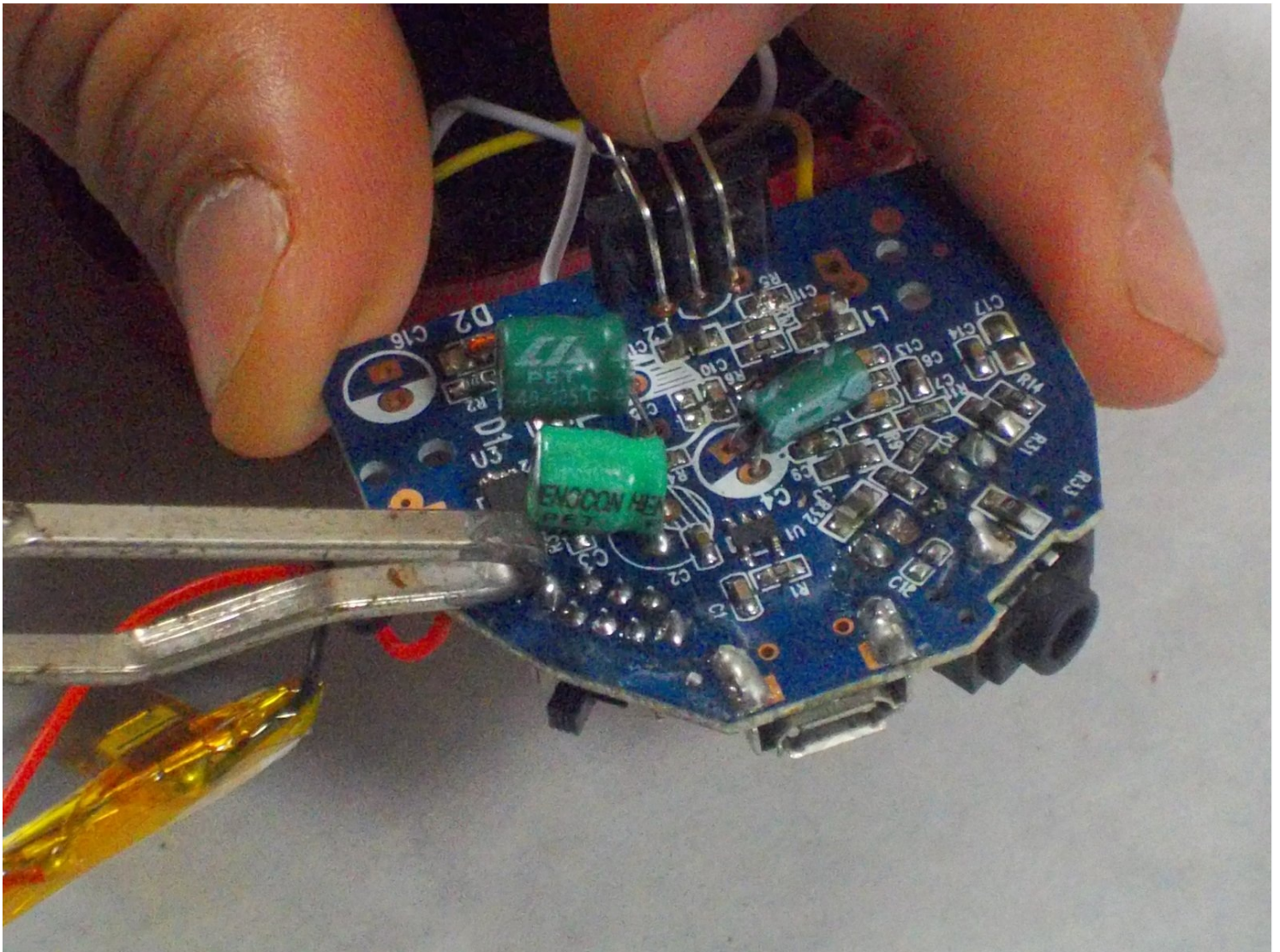




Marvel iHome MR-M66 Power Switch Cover Replacement

This guide will demonstrate how to access and...

Written By: Aaram Williams



INTRODUCTION

This guide will demonstrate how to access and replace the power switch cover of the Marvel iHome MR-M66.

TOOLS:

Phillips #0 Screwdriver (1)

iFixit Opening Tool (1)

Metal Spudger (1)

Soldering Iron 60w Hakko 503F (1)

Lead-Free Solder (1)

Step 1 — Back Cover



- Remove two of the three screws shown on the bottom of the device.
- Begin removing the last screw, but leave it partially in the socket to remove the bottom cover easier.

Step 2



- Remove the bottom cover by either pulling on the screw or using a plastic opening tool to pry the cover off.
- After removing the bottom cover, remove the two screws.

Step 3



- Use a spudger to release the small retaining clip that holds the feet to the bottom of the device.
⚠ Be careful here, as too much force can break the clip.
- Remove the two screws from the back of the device.

Step 4



- Using a plastic opening tool and your hand, separate the front and back covers from each other.
- Starting from the bottom, use the plastic opening tool to create the initial separation and continue along the seam to the top of the device.
 - ⓘ This step requires the most time and patience, so be careful.
 - ⓘ The power switch will most likely come loose during this step and you will hear something rattling inside the device.

Step 5



- Remove the two arms from either side of the device once a significant separation has been created.
 - ⓘ They are not fixed to the body itself so you should be able to wiggle them free.
- Continue pulling the back cover off the device.
- Remove the red cover for the on/off switch from the device.

To reassemble your device, follow these instructions in reverse order.