



Toshiba Satellite A660-ST3NX2X Screen Replacement

This replacement guide is to walk you through a...

Written By: Megan Murrell



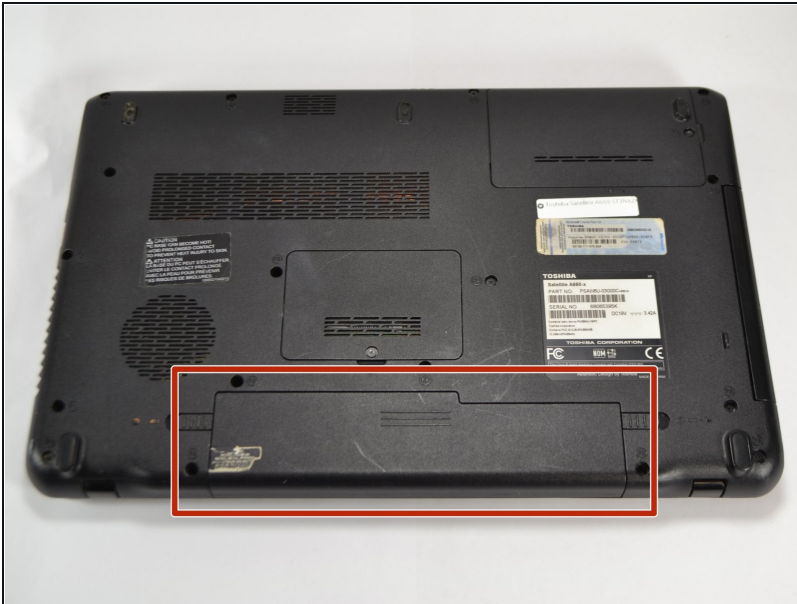
INTRODUCTION


This replacement guide is to walk you through a screen replacement on your Toshiba Satellite A660-ST3NX2X. Before starting this replacement, make sure you have a replacement screen that is made for this computer. Also, make sure the computer is powered off and completely shut down before completing this replacement.

TOOLS:

JIS Driver Set (1)
J000

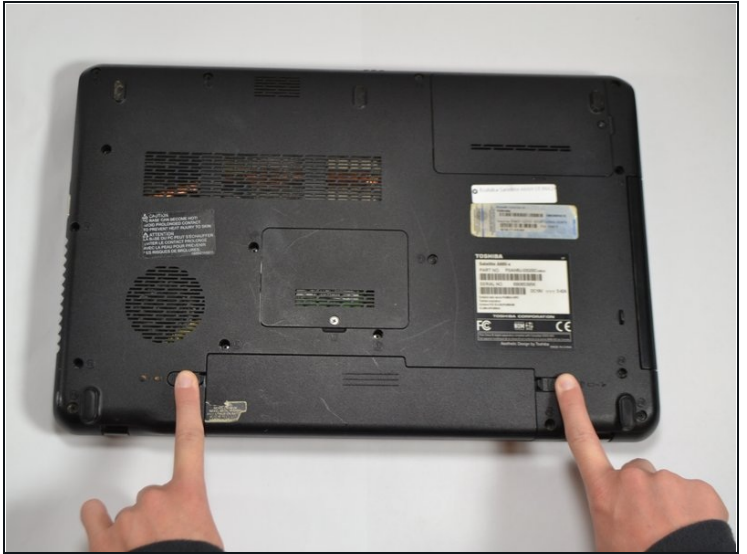
Step 1 — Battery



 **Unplug all cables and other devices from the computer before starting this replacement.**

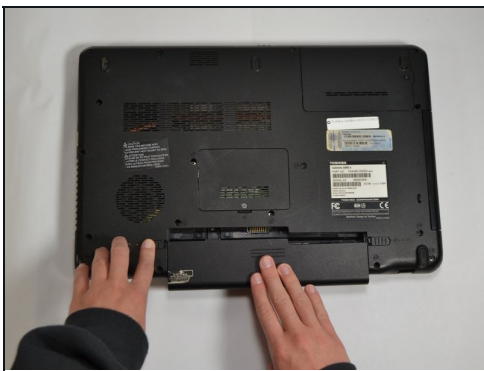
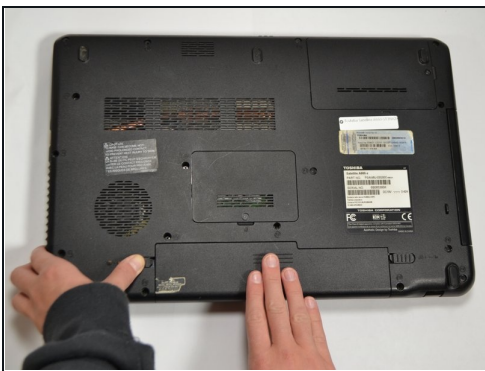
- Turn the computer over, so the screen is facing down and the battery is positioned in front of you.

Step 2



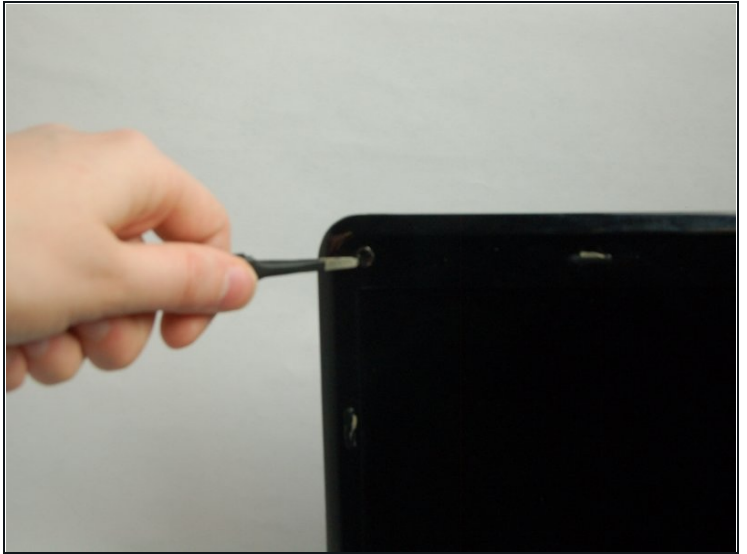
- Locate the two sliding tabs on either side of the battery.
- Using both hands, place one finger on each tab and slide them to the sides and away from each other.

Step 3



- Pull the battery out, keeping the tabs pushed to the side.
 - ① The right tab on this laptop stayed pushed to the right without needing to be held in place.

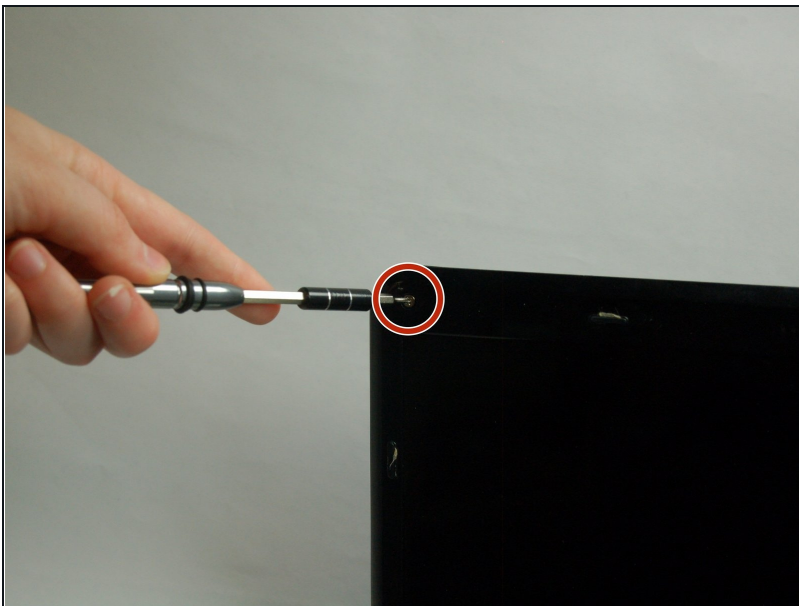
Step 4 — Screen



⚠ Unplug all devices and power down the computer completely.

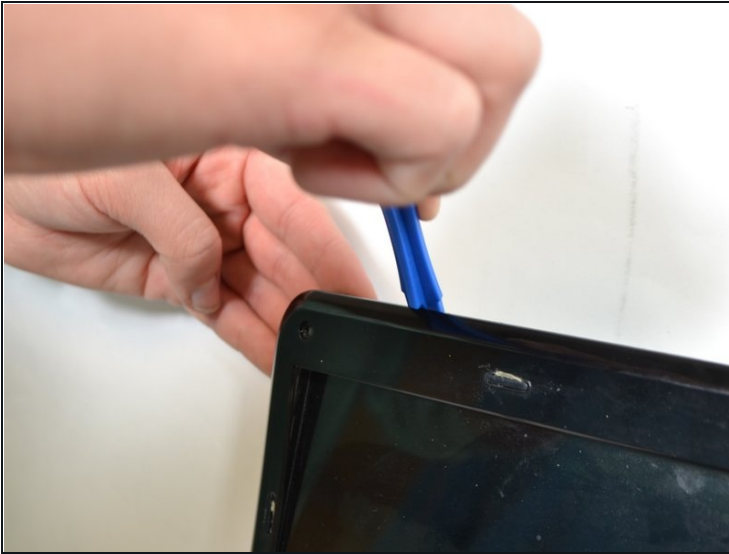
- Peel back all four circular stickers that are located at each corner of the computer frame.
 - A pair of fine point [tweezers](#) was used to complete this.

Step 5



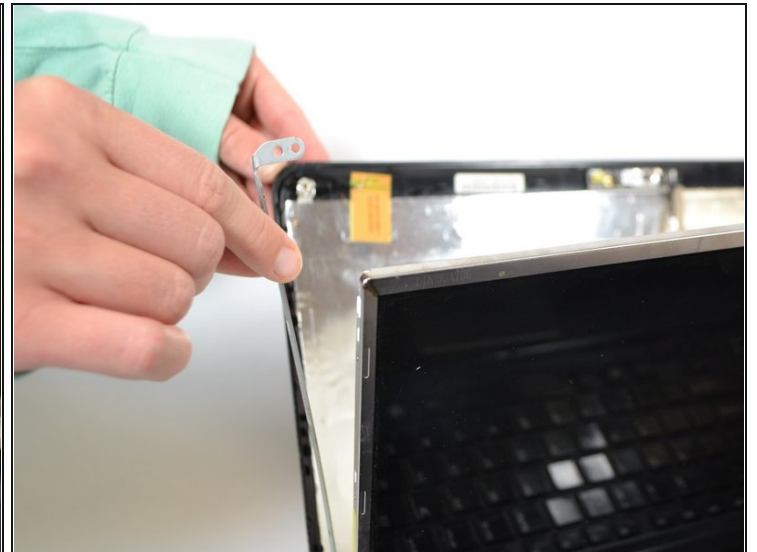
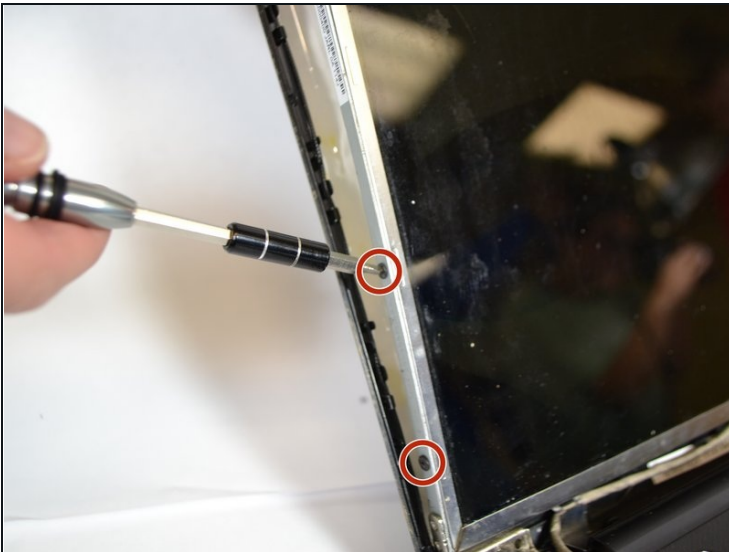
- Unscrew all four 5mm screws located underneath the stickers in each corner of the computer frame.
- The computer frame should become more loose after the screws are removed.

Step 6



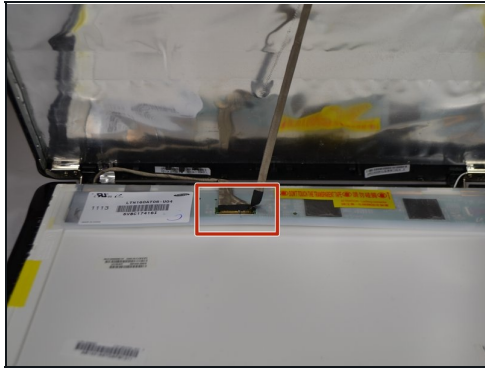
- Pry the frame of the screen away from the computer.
- A prying tool was used by inserting it in the crack between the frame and the screen and running it along the edges of the frame.

Step 7



- Unscrew the three black 4mm JIS screws on each side of the metal frame that is still attached to the side of the screen.
 - Only two screws are shown in the image.
- The metal frame will completely separate from the computer screen.

Step 8



- Position the screen in a way that the aluminum backing is exposed.
- Peel off the metal-like attachment from the back of the screen.

To reassemble your device, follow these instructions in reverse order.