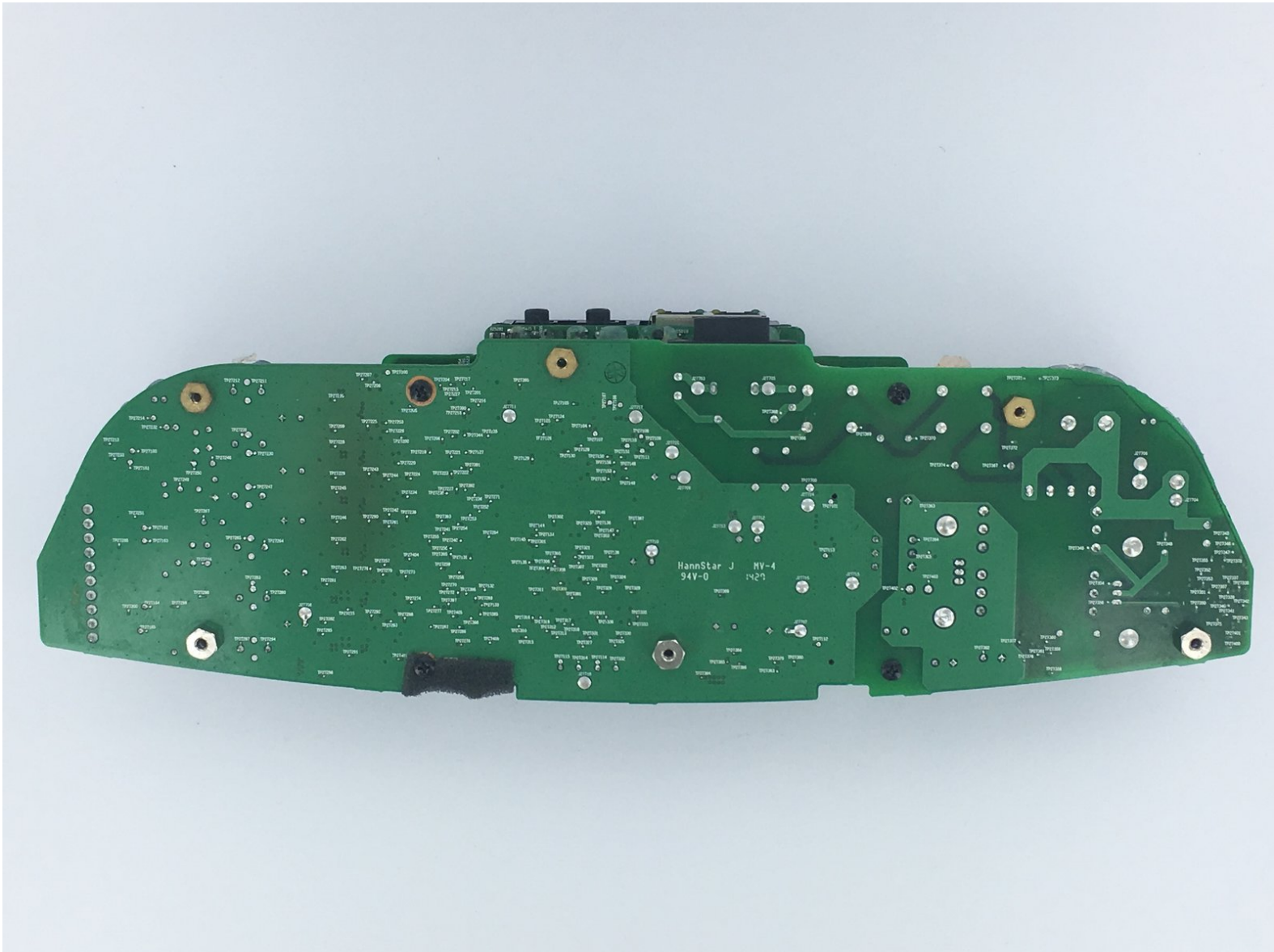




Sonos Play 5 Audio/Control Board Replacement

Replacement guide for the Audio/Control Board of a Sonos Play 5.

Written By: Warren Willingham



INTRODUCTION

Replacement guide for the Audio/Control Board of a Sonos Play 5.



TOOLS:

- [Phillips #2 Screwdriver](#) (1)
 - [Heavy-Duty Spudger](#) (1)
 - [Phillips #0 Screwdriver](#) (1)
-

Step 1 — Front Panel Assembly



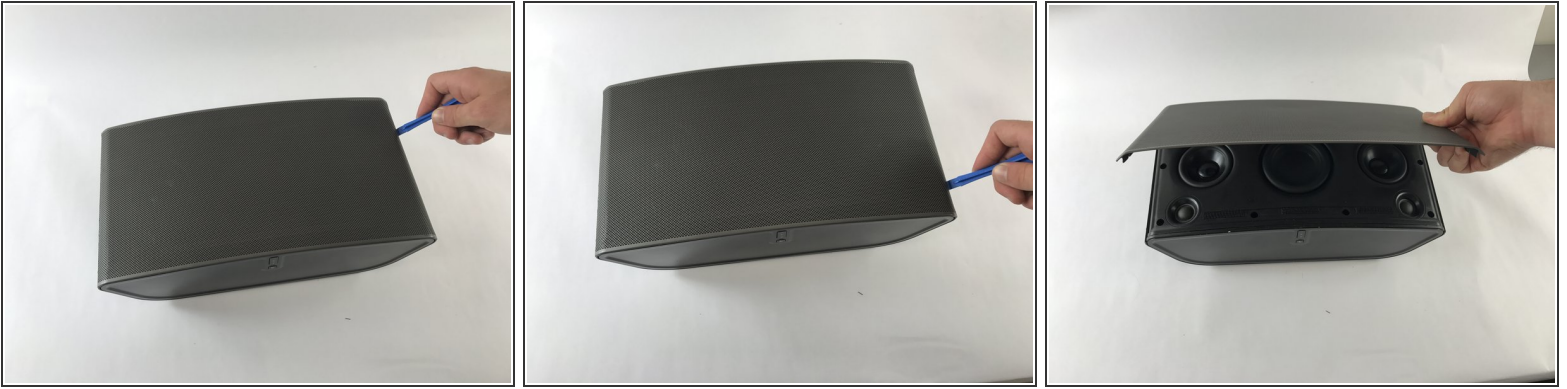
- Disconnect any power to the speaker and wait a few minutes for the capacitors to fully discharge.
- Flip the speaker upside down.
- ⓘ There may be a rubber foot covering the bottom screws (not included in picture). Remove this by pulling up from one of the corners using a spudger.

Step 2



- Remove eight 10mm Phillips #2 screws
- Remove the bottom panel by pulling upwards.
- ⚠ Be very gentle with the ends of the three antennas. They are very fragile.

Step 3



- Flip the device so that the grille is facing up.
- Locate the line on the right side of the speaker where the grill and the plastic meet, and place your plastic opening tool in the gap.
- Run the spudger along the gap, loosening the grille from the plastic. Repeat this process on the left side as well.
- Gently pull up on the grille, removing it from the front panel.


Step 4



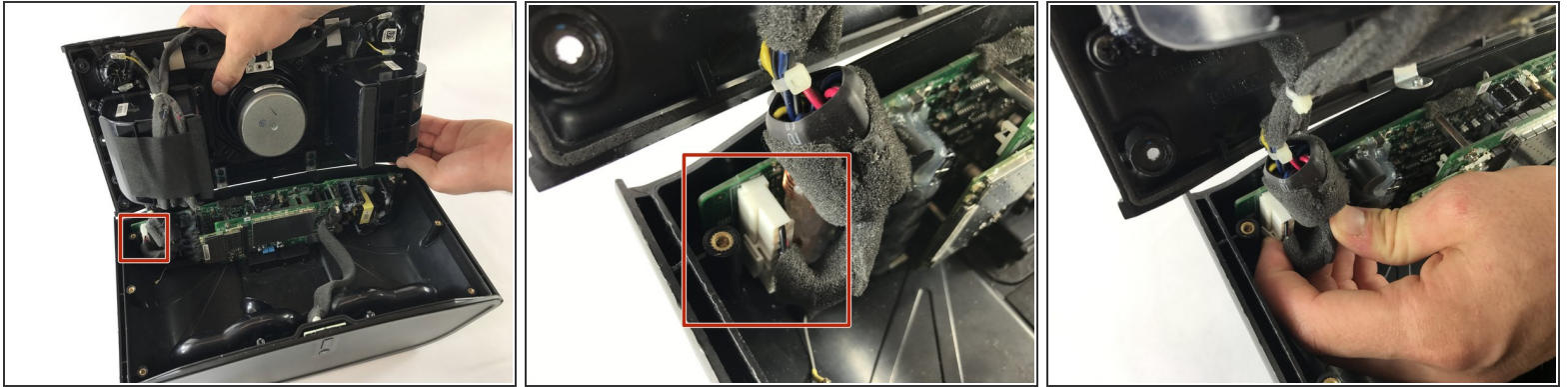
- Remove the six 8mm Phillips #2 screws.
- Remove the two 10mm Phillips #2 screws.

Step 5



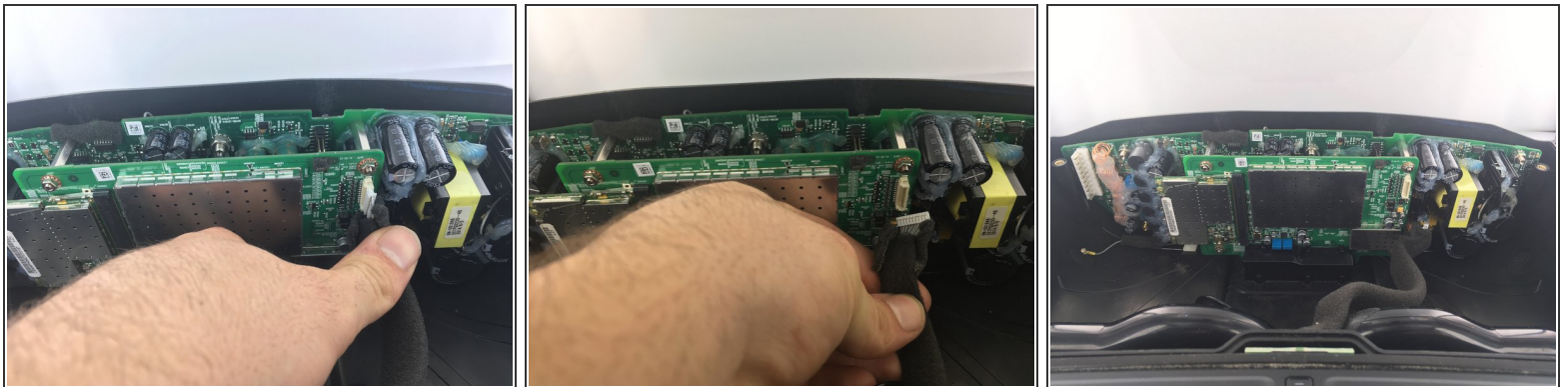
- Locate the line on the right side where the front panel and back panel meet. Place a plastic opening tool in the gap, and run it along the gap. Repeat this on the left side.
 - Use the opening tool to lift the front plate. If a plastic tool is not providing enough leverage, use a metal opening tool.
 - Gently pull up on the face plate to ensure it has been detached from the enclosure.
-  When pulling on the face plate be cautious because it is still connected by wires on the back of the plate.

Step 6



- Lift up the front panel, forming a 90 degree angle with the back panel. Locate the locate ten pin connector shown. This is the wire that connects the front panel to back panel.
- Press down on the small tab located on the connector. With the tab firmly pressed down, pull the connector out from its socket.
- The faceplate assembly is now fully detached from the rest of the speaker.

Step 7 — Motherboard



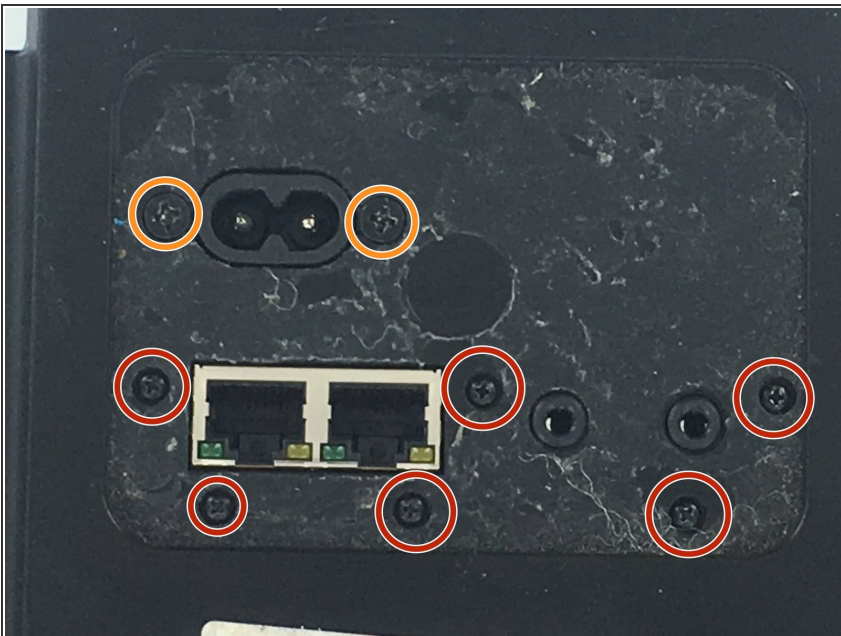
- Remove the ten pin connector.

Step 8



- Flip the device over on its front side.

Step 9



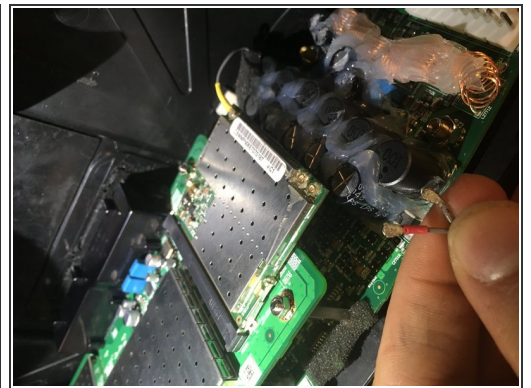
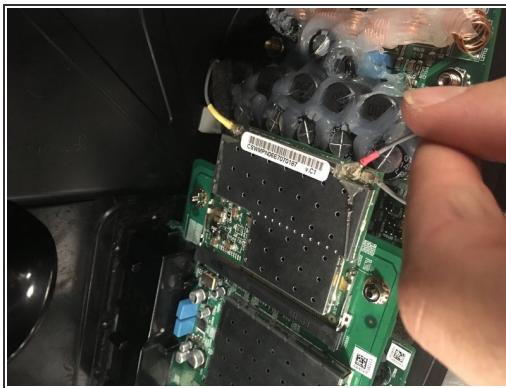
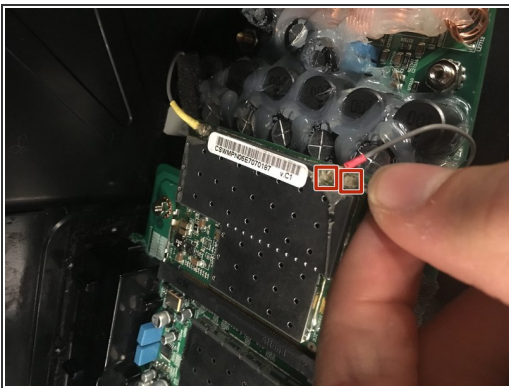
- Remove six 5mm Phillips #0 screws.
- Remove two 7mm Phillips #2 screws.

Step 10



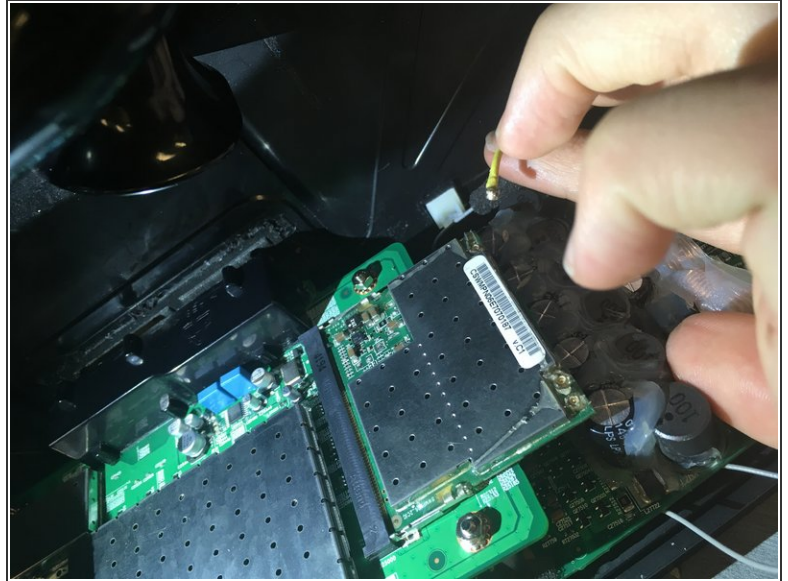
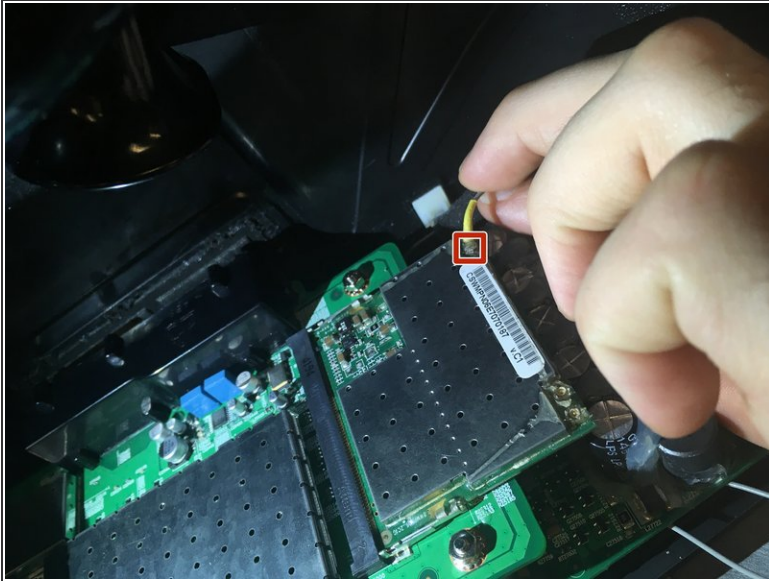
- Flip the device on its back.

Step 11



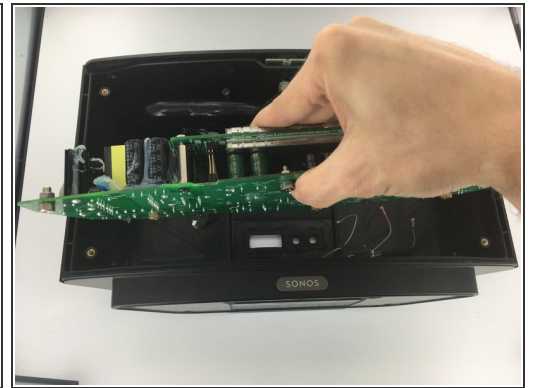
- Remove the grey and red antenna connectors by lifting them away from the board.
- Pull cords away from the board.

Step 12



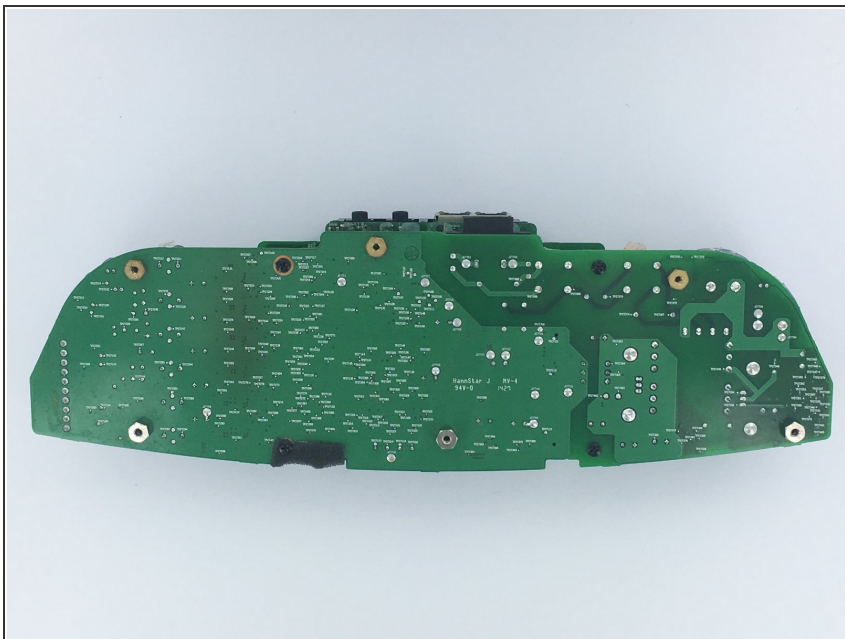
- Remove the yellow antenna connector by lifting it away from the board.
- Pull cord away from the board.

Step 13



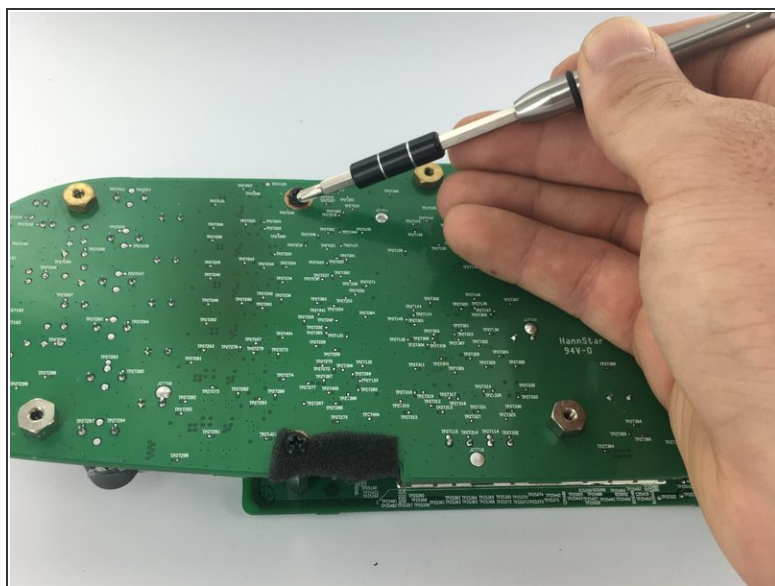
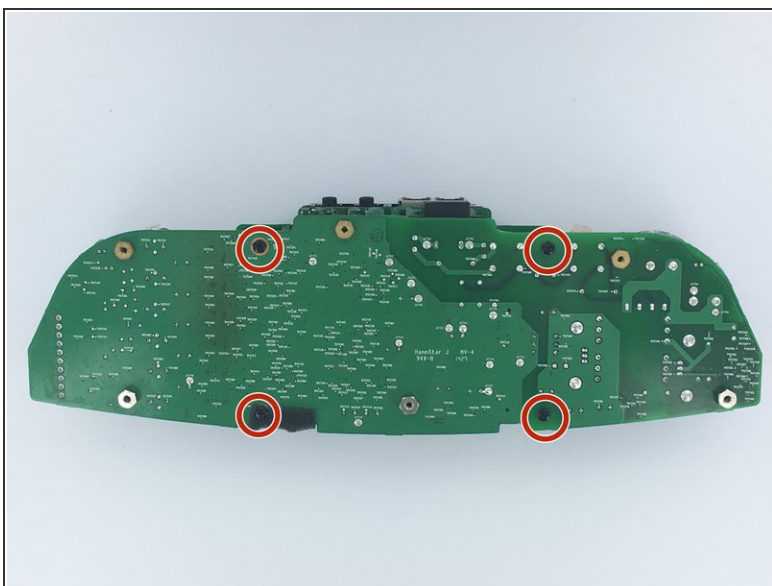
- Remove circuit board by lifting it straight away from the rear plate.

Step 14 — Audio/Control Board



- Lay the two connected boards so that the power board is facing upwards

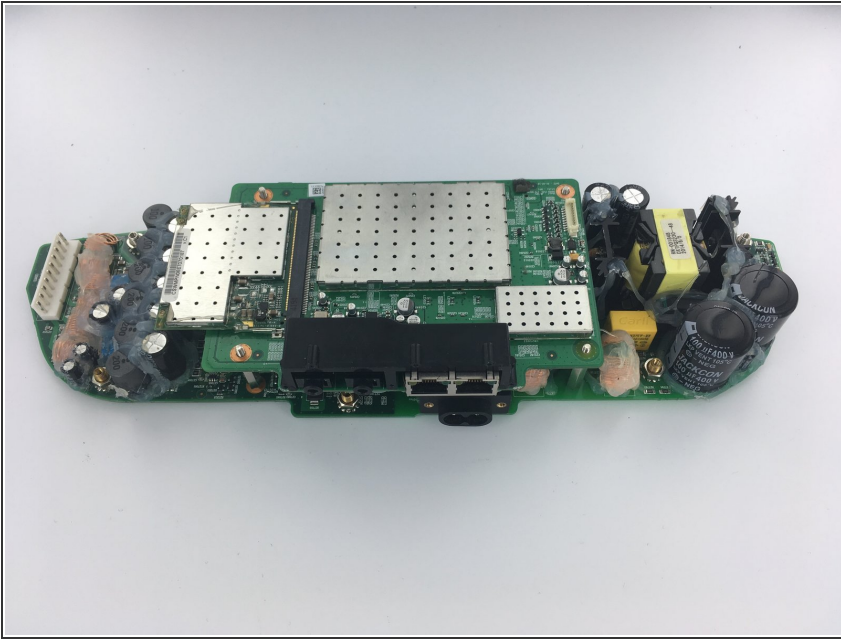
Step 15



- Unscrew Four Phillips #2 bolts

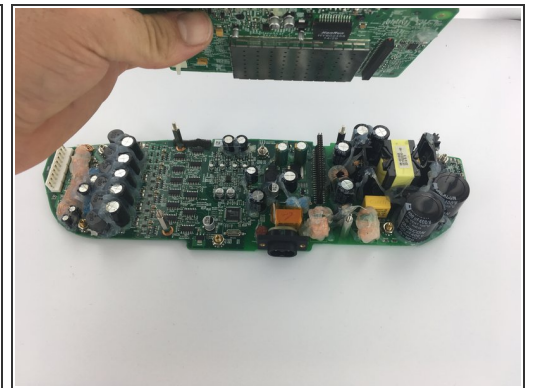
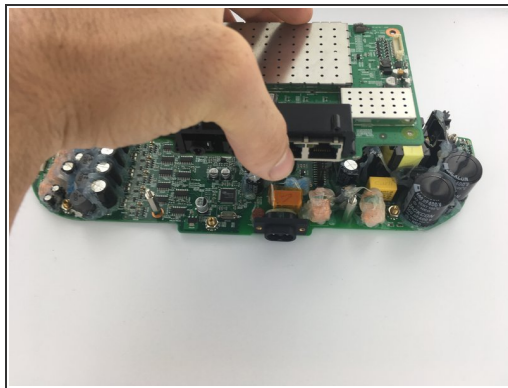
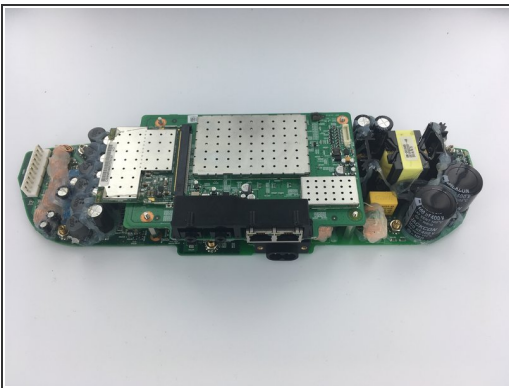
ⓘ These bolts will not come out, but will pull out of the nuts on the other side of the board

Step 16



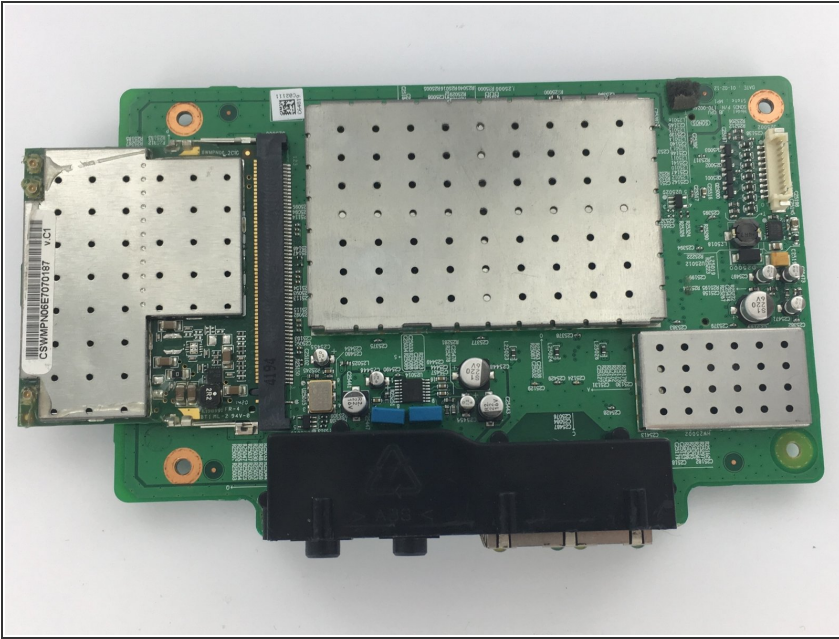
- Flip boards so audio board is facing upwards, as is shown in picture

Step 17



- Lift control board up and away from power supply board

Step 18



- The smaller of the two boards is the audio/control board.

To reassemble your device, follow these instructions in reverse order.