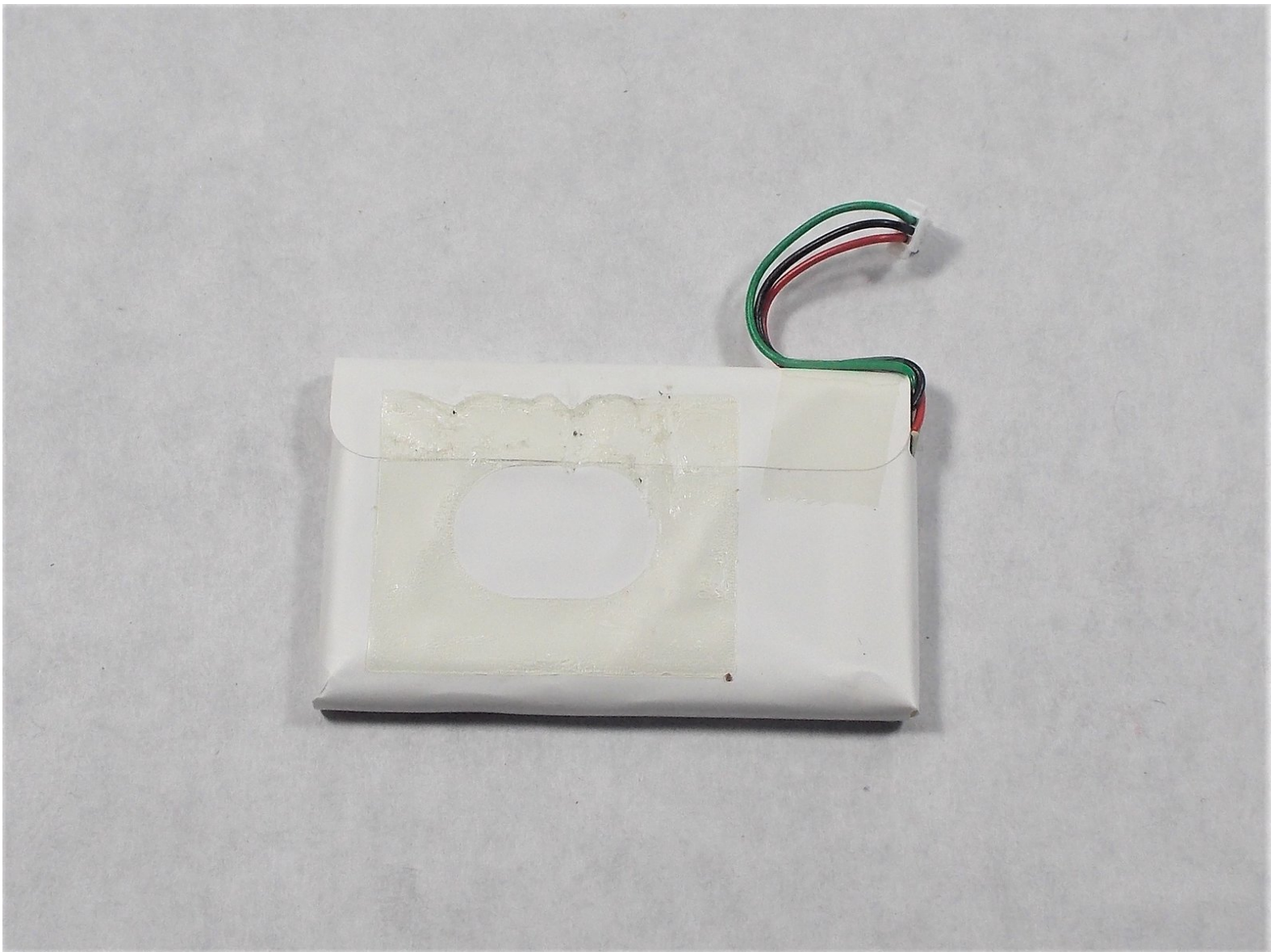




Garmin Nuvi 200w Battery Replacement

This will help replace a dead or faulty battery.

Written By: Matthew Eires



INTRODUCTION

The battery on the Garmin Nuvi 200W is prone to losing charge over time. It can also fail due to unknown causes, which will require a replacement.

This repair is best done in a clean, dust-free environment. The sensitive electronics inside the Nuvi 200W will not respond will to sand and other small particles. It is also important to leave yourself ample time to effectively navigate the battery removal process.



TOOLS:

- [T5 Torx Screwdriver](#) (1)
- [iFixit Opening Tools](#) (1)
- [Phillips #0 Screwdriver](#) (1)
- [Heavy-Duty Spudger](#) (1)



PARTS:

- [Garmin Nuvi 200/205/250/255/260/265/270 Replacement Battery](#) (1)

Step 1 — Rear Cover



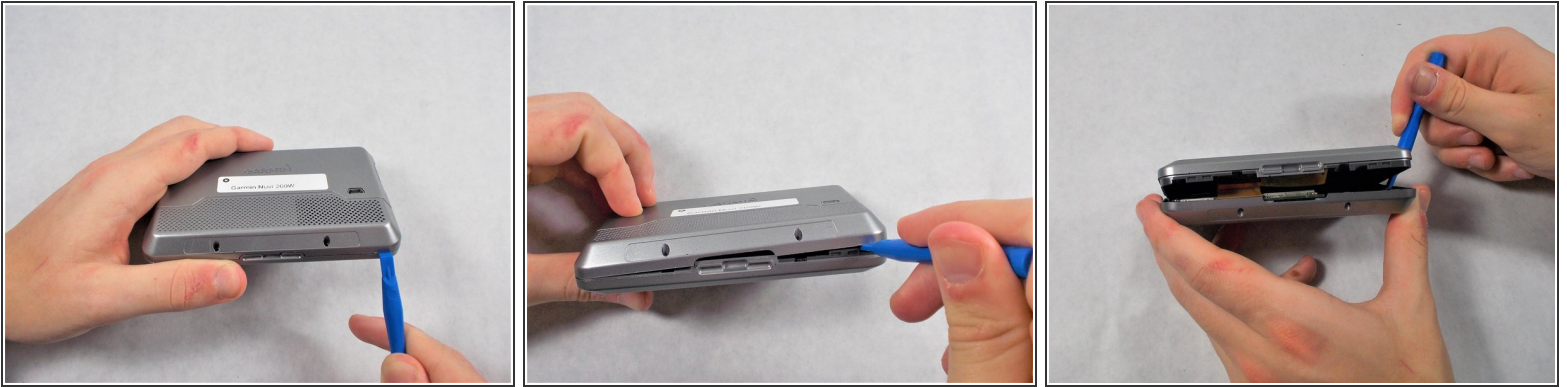
- Peel off the sticker in order to find the two Torx T5 screws.

Step 2




- Remove the two 4mm T5 Torx screws.

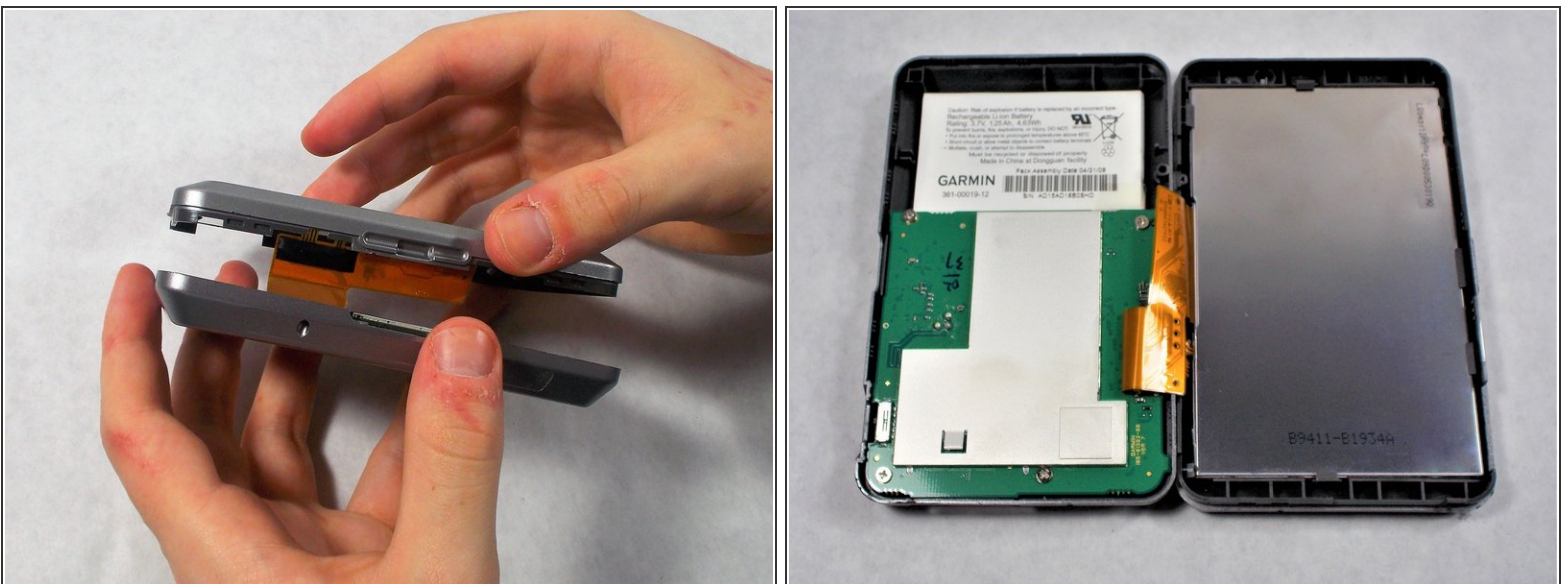
Step 3




- Carefully, using your plastic opening tools find the crease which separates the front and rear covers.
- Once you have a little gap, work it around the whole device with the tool to get separation.

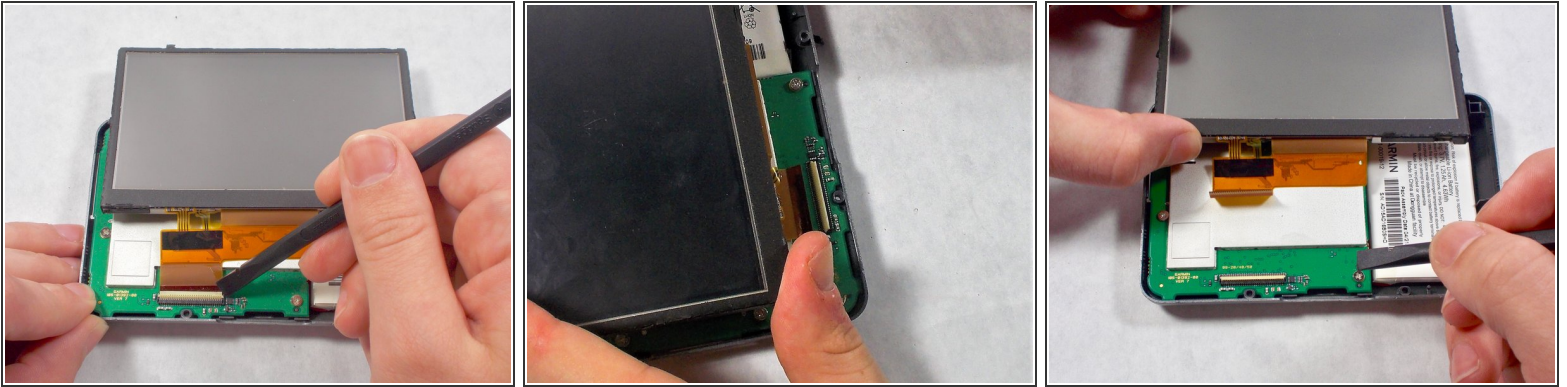
 There is a ribbon cable between the two covers, be very careful when taking them apart to not damage the ribbon.

Step 4



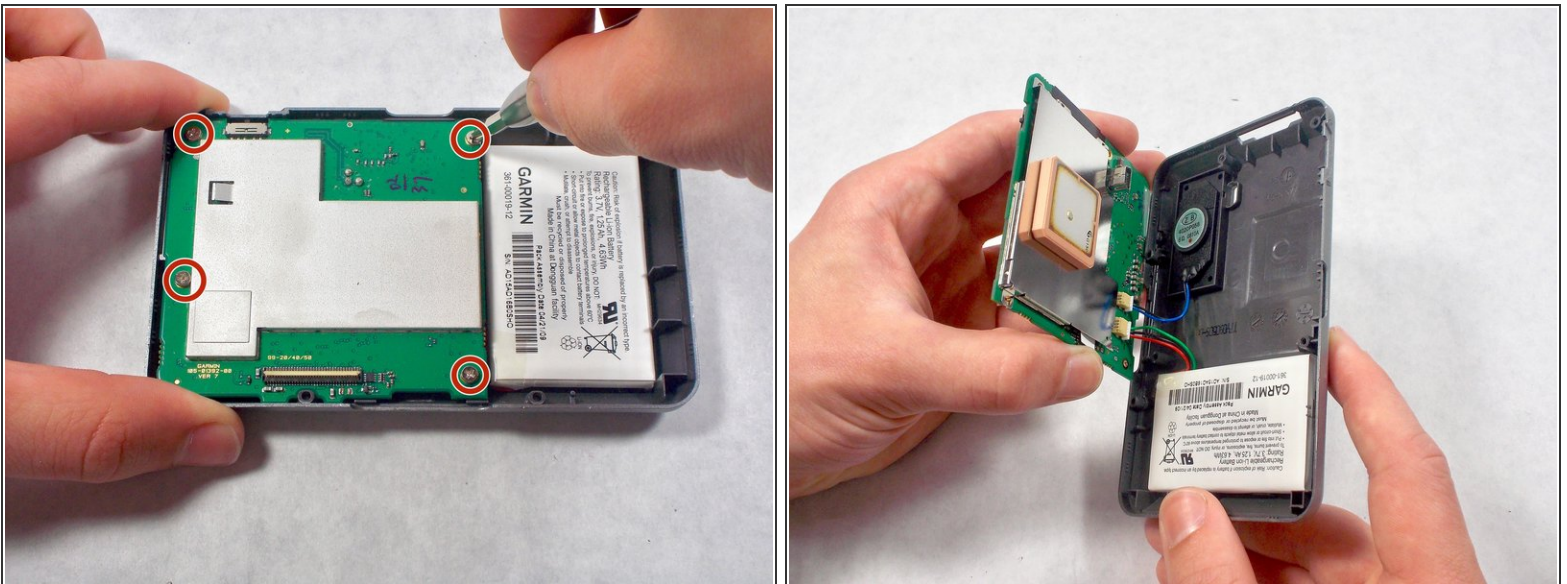
 After the case front and rear are separated, carefully lay the two sides down without disconnecting or damaging the orange ribbon cable.

Step 5 — Display Assembly



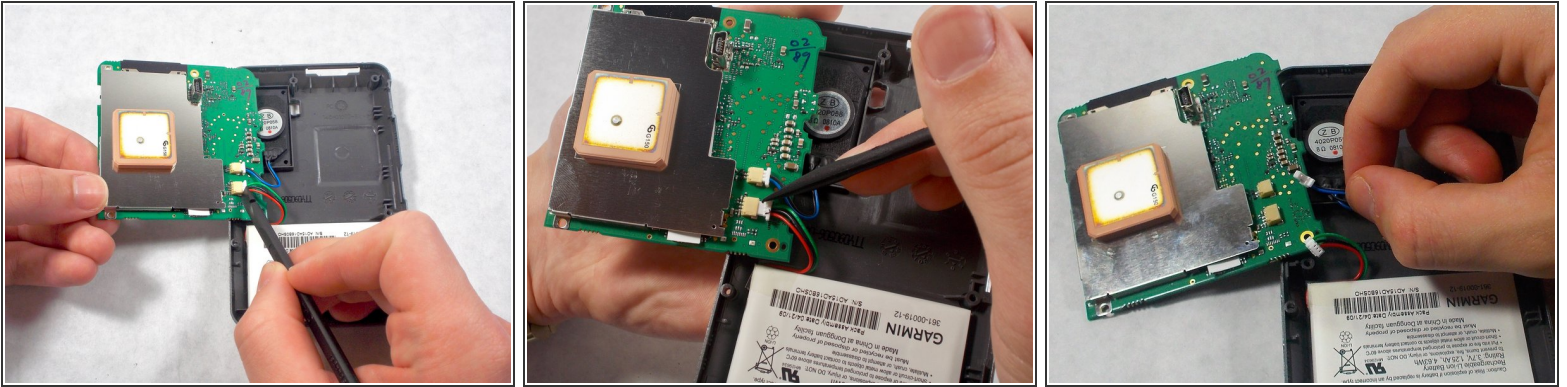
- Carefully use the black spudger to lift the white retaining clamp on the display cable ZIF connector.
⚠ Make sure to lift up on the white retaining clamp and not the ZIF connector itself.
- Slide the orange ribbon cable away from the ZIF connector.

Step 6 — Motherboard



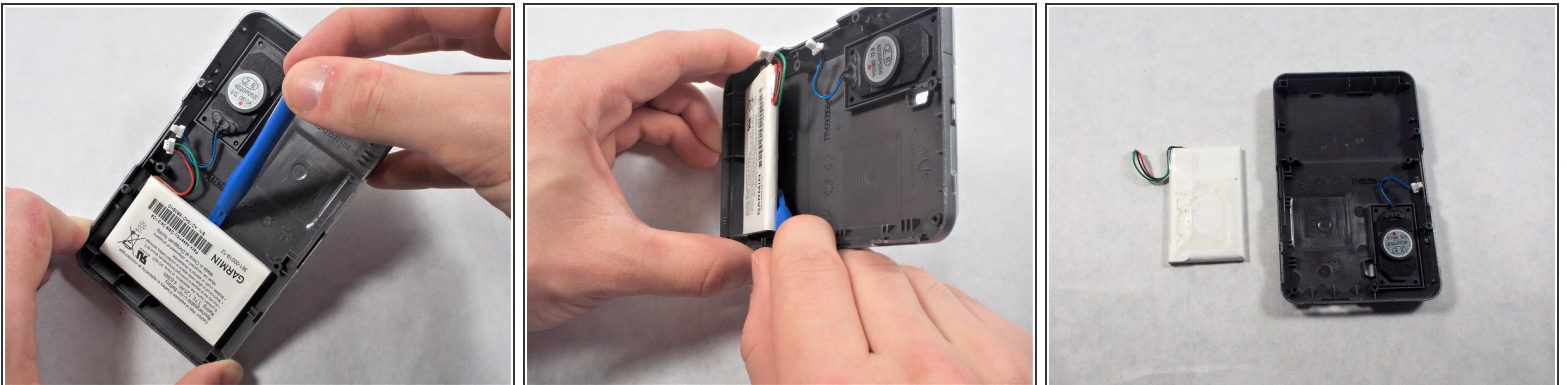
- Using a screw driver, unscrew the four 2mm screws holding the motherboard in place.
- ⚠ Gently lift the motherboard away from the rear cover. Take care to not damage the wires or ports that link the motherboard to other components.

Step 7



- Using the black spudger, apply pressure to nudge the plug out of its port.
- Repeat this process for both ports.

Step 8 — Battery



- Using your opening tools, separate the battery from the top side. Very slowly push your tool down into the crevice.
- ⚠ Be careful because the battery is glued to the rear cover, so it does take some force to separate.
- Once you have a gap big enough, pull the battery off the cover.

To reassemble your device, follow these instructions in reverse order.