



Marvel iHome MR-M66 Battery Replacement

Before starting this guide, you should be able...

Written By: Tyler Jacob



INTRODUCTION

Before starting this guide, you should be able to follow the instructions without any prior knowledge with electronics. However, if you do not have experience with any wiring, follow these steps exactly. The device should be off and there is little chance of any electricity going through the system, but be sure to take all the precautions set out in this guide. While not necessary, you may use a pair of thin gloves while replacing this guide, however using the gloves will make replacing the battery slightly harder.

TOOLS:

- Metal Spudger (1)
- Phillips #0 Screwdriver (1)
- Electrical Tape in 6 Assorted Colors (1)
- iFixit Opening Tool (1)
- Portable Soldering Iron (1)
- Lead-Free Solder (1)

Step 1 — Back Cover



- Remove two of the three screws shown on the bottom of the device.
- Begin removing the last screw, but leave it partially in the socket to remove the bottom cover easier.

Step 2



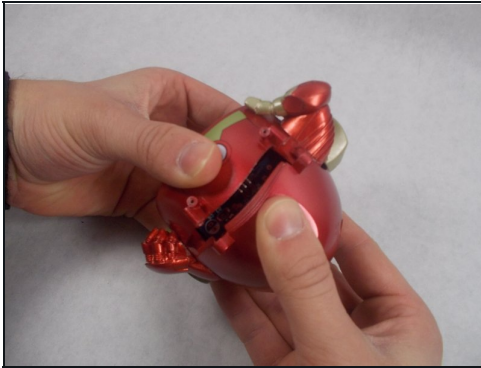
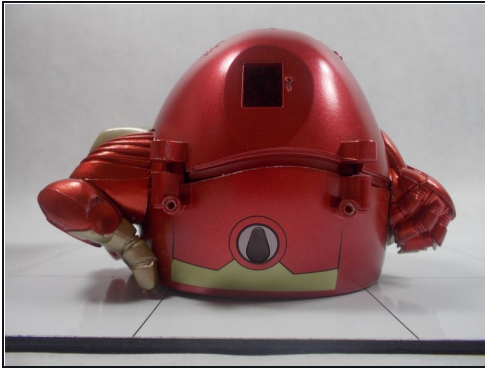
- Remove the bottom cover by either pulling on the screw or using a plastic opening tool to pry the cover off.
- After removing the bottom cover, remove the two screws.

Step 3



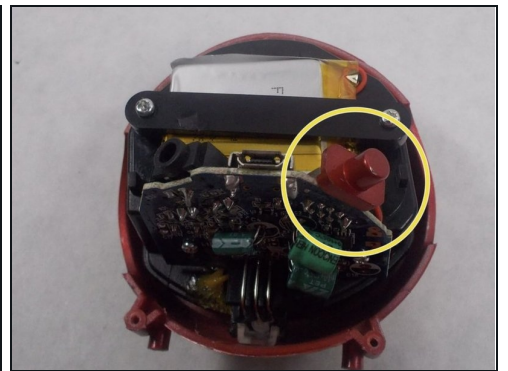
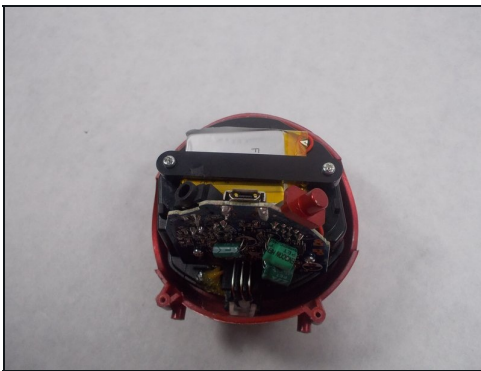
- Use a spudger to release the small retaining clip that holds the feet to the bottom of the device.
⚠ Be careful here, as too much force can break the clip.
- Remove the two screws from the back of the device.

Step 4



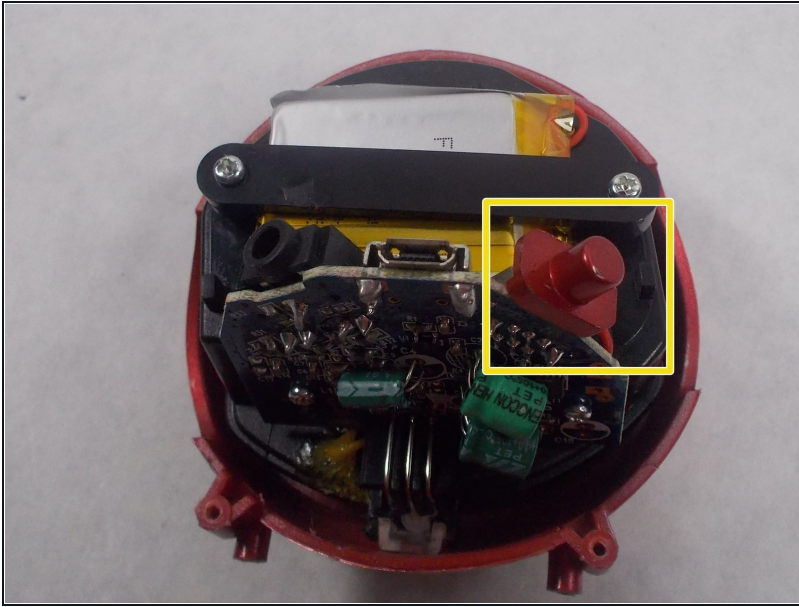
- Using a plastic opening tool and your hand, separate the front and back covers from each other.
- Starting from the bottom, use the plastic opening tool to create the initial separation and continue along the seam to the top of the device.
 - ⓘ This step requires the most time and patience, so be careful.
 - ⓘ The power switch will most likely come loose during this step and you will hear something rattling inside the device.

Step 5



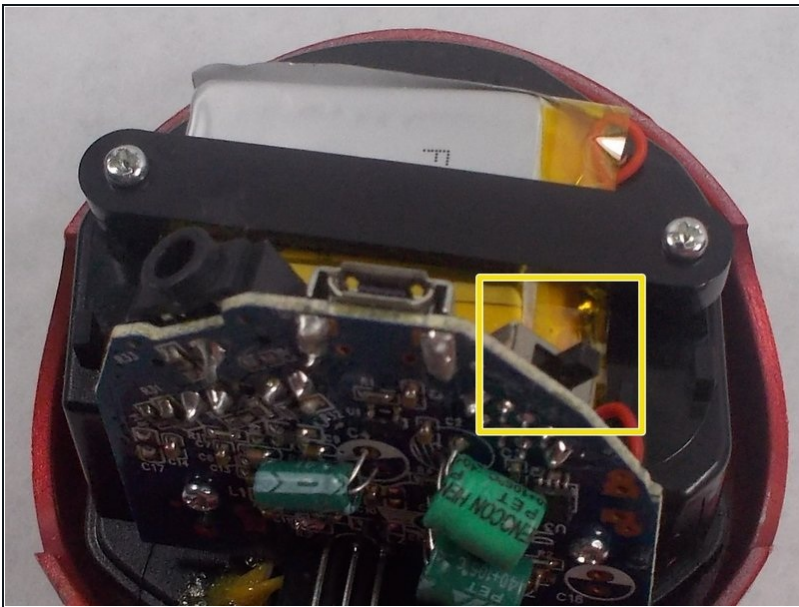
- Remove the two arms from either side of the device once a significant separation has been created.
 - ⓘ They are not fixed to the body itself so you should be able to wiggle them free.
- Continue pulling the back cover off the device.
- Remove the red cover for the on/off switch from the device.

Step 6 — Battery



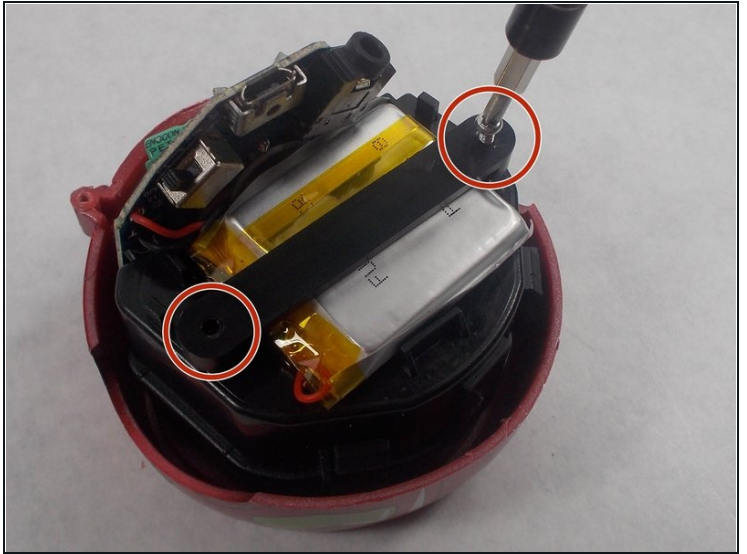
- Remove the red cover for the on/off switch from the device.

Step 7



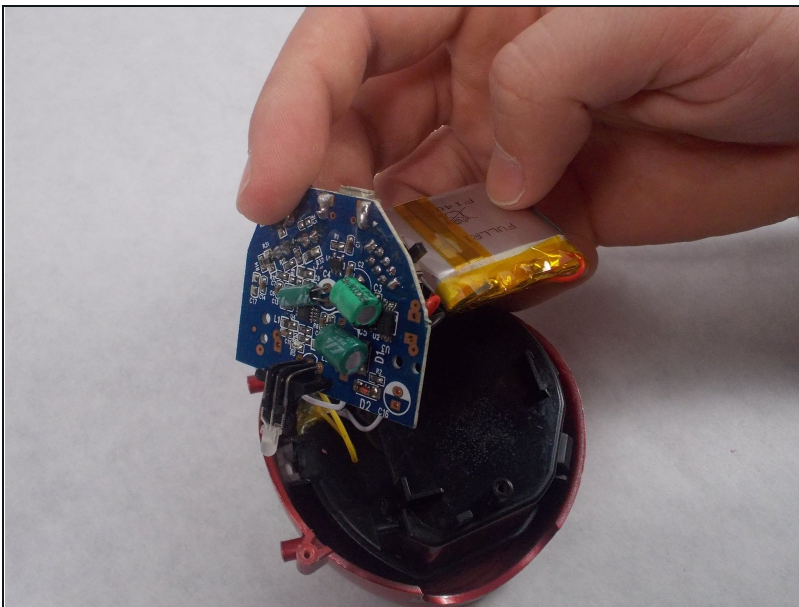
- ⚠ Before taking anything else out or apart, make sure the device is turned off.
- Confirm that the power switch is in the same position as shown in the picture.

Step 8



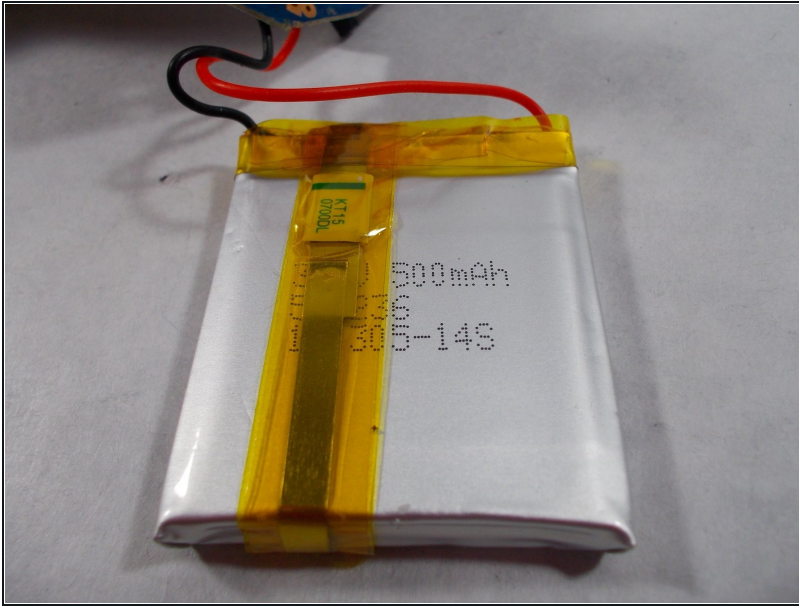
- Loosen and remove the two Phillips screws holding down the battery cover (the black plastic strip that keeps the battery in place).

Step 9



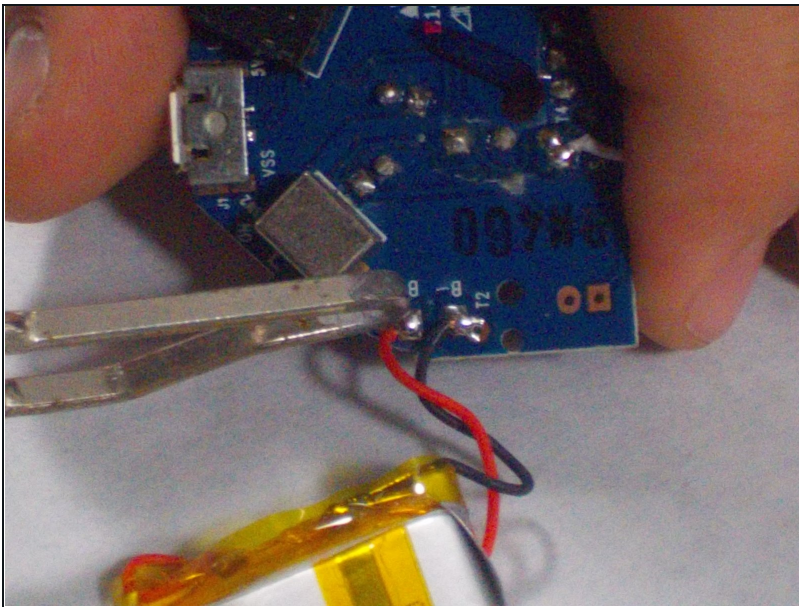
- Remove the battery cover. Set it aside with the on/off button cover, backplate, and other plastic pieces taken from the device.
- The battery should be easy to lift as shown in the picture.

Step 10



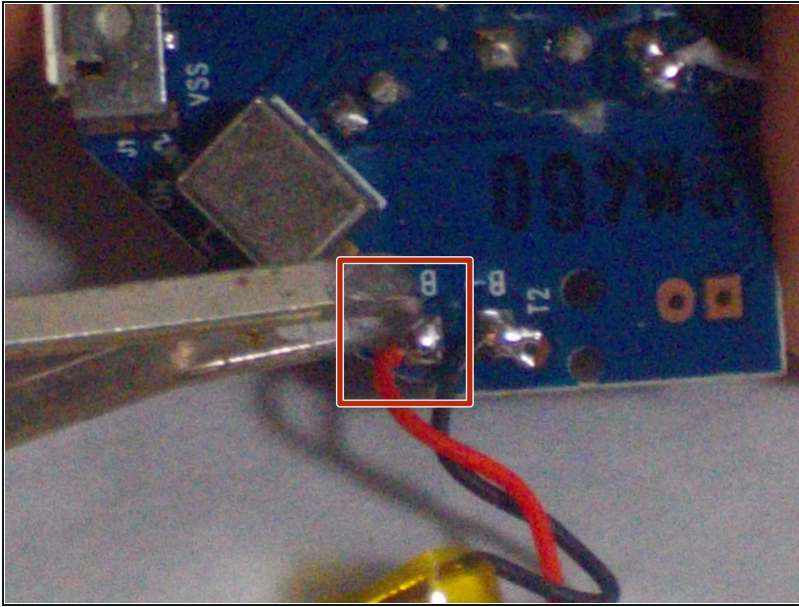
- Gently lift the battery from the rest of the front assembly to stretch the wires out slightly. Gently let the battery hang from the side of the device.

Step 11



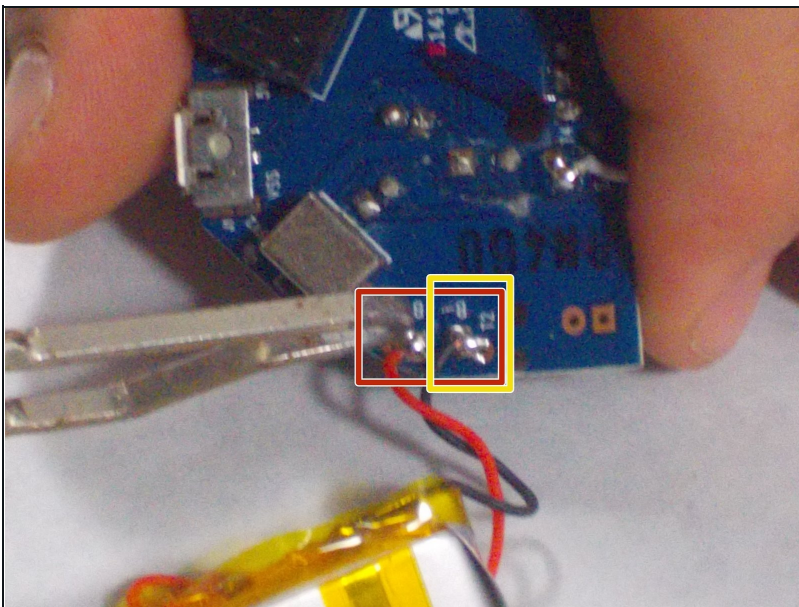
- Take the soldering iron and heat up the solder attaching the end of the red wire from the battery to the motherboard.
- This will loosen the wire from the motherboard.

Step 12



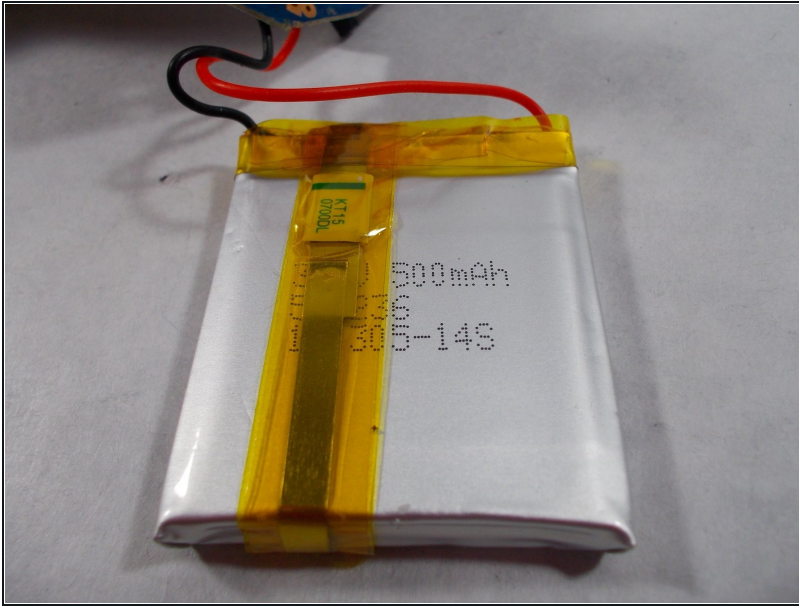
- Take the new battery, place the red wire into the hole on the left that the original battery wire was connected. Heat up the solder already there and place the end of the wire directly onto the solder.
- ① If you let go of the wire and it disconnects from the motherboard, then you may need to add solder onto the motherboard over the hole you put the wire in. Heat the end of the solder and place it over the wire as you add it into the correct hole (on the left in the picture shown).

Step 13



- Repeat the previous two steps with the second hole and wire

Step 14



- Set aside the old battery.
- After this step, the new battery should be connected and hanging from the side of the device.

To reassemble your device, follow these instructions in reverse order starting with Step 12.