



PalmOne Zire 72 Camera Replacement

Written By: Michelle Medina



TOOLS:

T5 Torx Screwdriver (1)

Phillips #00 Screwdriver (1)

Spudger (1)

Tweezers (1)

Step 1 — Camera



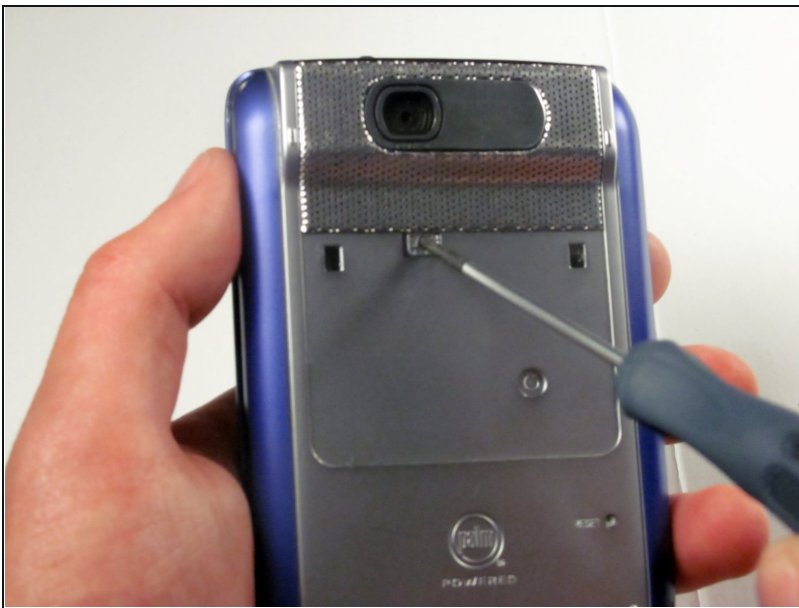
- Using a T5 Torx screwdriver, unscrew the two 5mm screws located at the bottom of the device.

Step 2



- Peel back the adhesive label below the camera on the rear to reveal a hidden screw, circled in the picture to the left.
- ① If you peel the entire label off, two holes underneath will be exposed to future damage. Try to preserve the label to reapply later.
- **Alternate Procedure:**
Underneath the camera, feel for a depression and cut the sticker directly above the depression to reveal the hidden screw.

Step 3



- Use a #00 Phillips screwdriver to remove the 2.5 mm hidden screw.

Step 4



- Use either end of the spudger to carefully pry off the camera lens mesh cover.

Step 5



- Using the #00 Phillips screwdriver, remove the two 9mm screws on the top corners of the device.

Step 6



- Spin the phone around so that the headphone jack is facing you. Run the flat end of the spudger around the entire edge of the device to gently pry the case off.
⚠ Gently remove the case to avoid damaging it.
- ① The L shaped latches located on the bottom of the device make it hard to remove the case; you should run the spudger around the device's edges again if you are having problems.

Step 7



- Remove the cover by lifting it from right to left.
- This should be similar to the action of the opening of a book.

⚠ The brown film connecting the motherboard to the screen may tear if this is not done carefully.

Step 8



- Remove the control pad buttons from the device and set aside.

Step 9



- Wedge the flat end of the spudger underneath the battery and gently pry it out.
- ⚠ Be cautious of the red and black wires on the battery, which may rip easily.
- ℹ The battery may have adhesive holding it to the device.
- ⚠ Be careful with the battery connector, which may rip.

Step 10



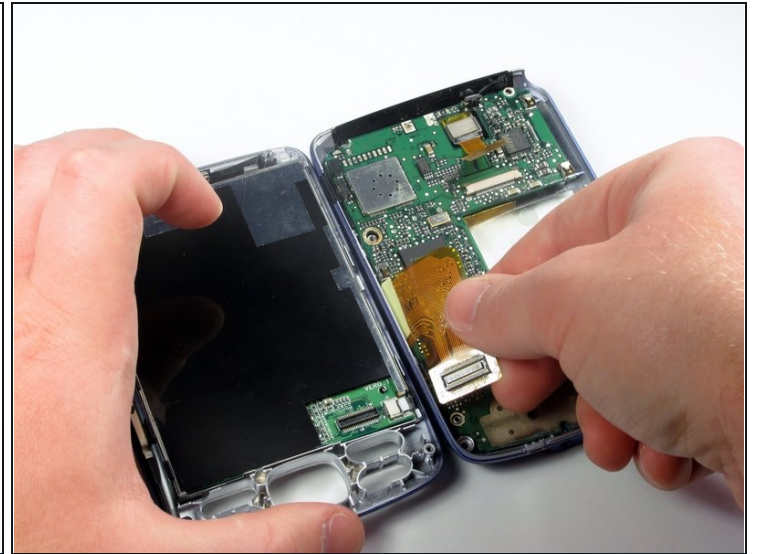
- Gently disconnect the white component connecting the battery to the motherboard.
- ① The connector should be pulled upward.

Step 11



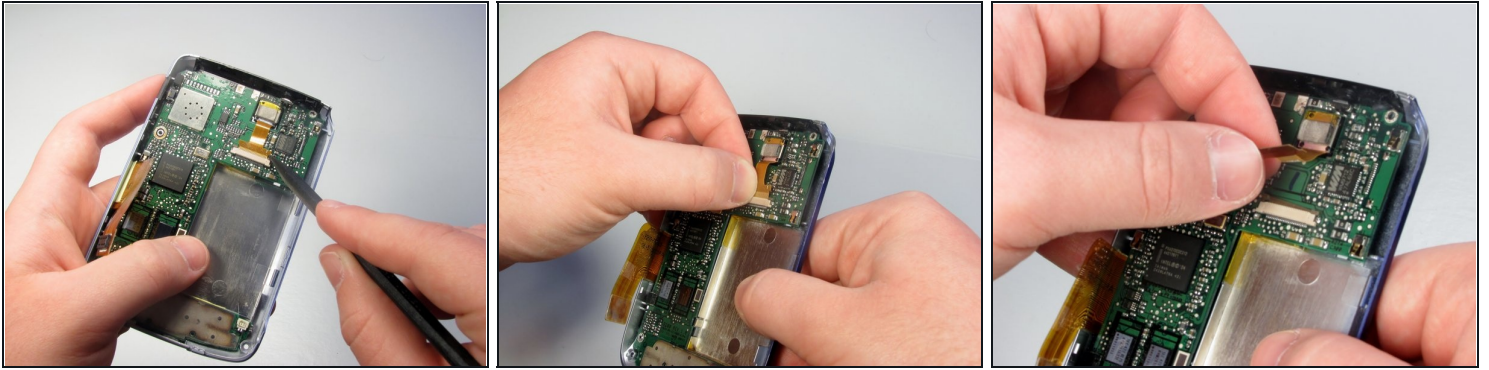
- Unscrew the single 3.5mm screw attaching the motherboard to the case with a #00 Phillips screwdriver.

Step 12



- Unplug the orange video connector leading from the lower case to the upper case.
 - ⓘ The orange video connector is the cable that connects the motherboard to the screen.

Step 13



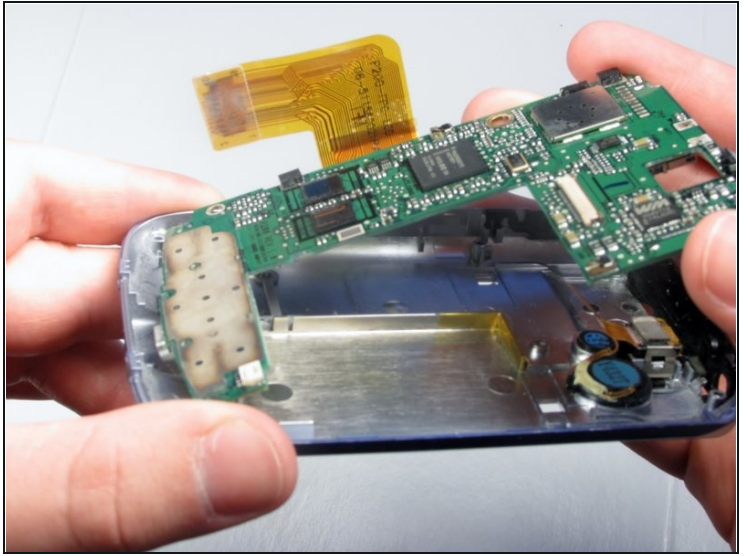
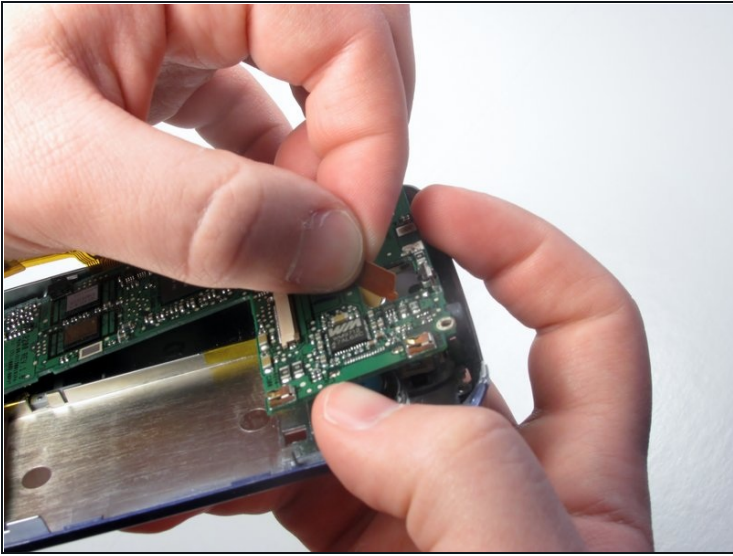
- Disconnect the camera from the motherboard. There are 1.5mm gaps on either side of the connector between the connector and its port. Put the pointed end of the spudger in one gap at a time and "walk" the connector out by wedging out the connector on each side.
- ① If it is difficult to pry out the connector completely with the spudger, you may remove it by hand.

Step 14



- Using the spudger, pry the motherboard off of the device.
- ① We recommend removing the motherboard off of the device from left to right.

Step 15



- Feed the video connector from the camera through the square hole in the motherboard.
- After doing so, you may carefully lift the motherboard out of the back case.

Step 16



- Using [tweezers](#), pry one side of the clip off.

Step 17



- Now that the camera is loose, you may pick it up and remove it from the case.

To reassemble your device, follow these instructions in reverse order.