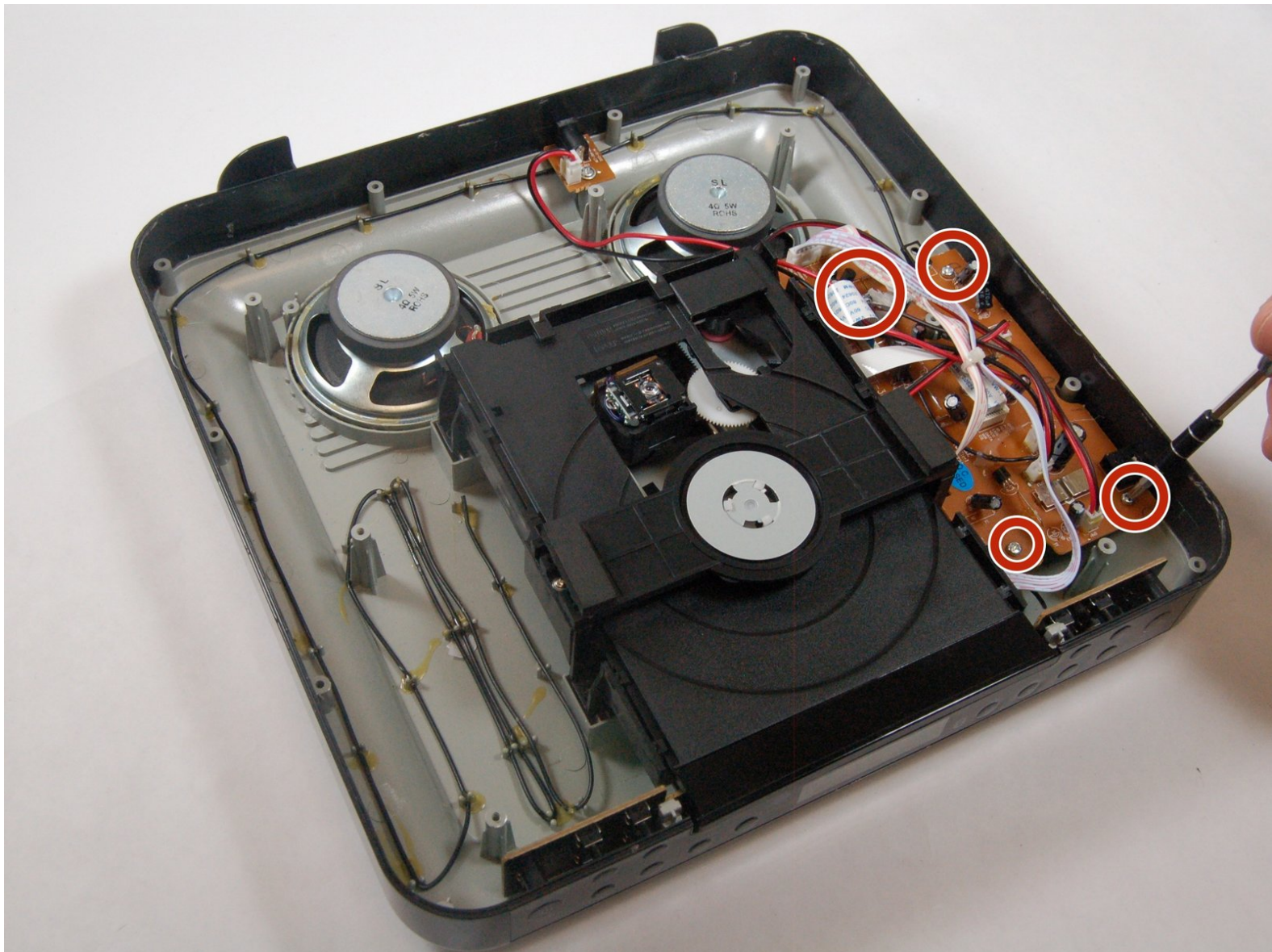




# iLive IKBC384S FM/AM Antenna Replacement

This is a guide to help replace the FM/AM antenna for the iLive IKBC384S.

Written By: Tracy Walts



# INTRODUCTION

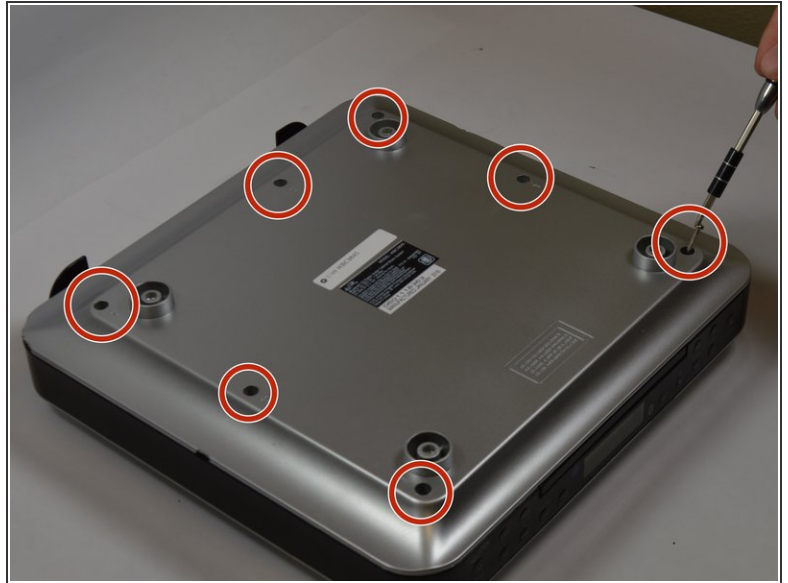
This is a guide to help replace the FM/AM antenna for the iLive IKBC384S.



## TOOLS:

- [iFixit Opening Tools](#) (1)
  - [iOpener](#) (1)
  - [Phillips #00 Screwdriver](#) (1)
-

## Step 1 — Top Cover



- Make sure you remove all seven 3 mm screws before proceeding to the next step.

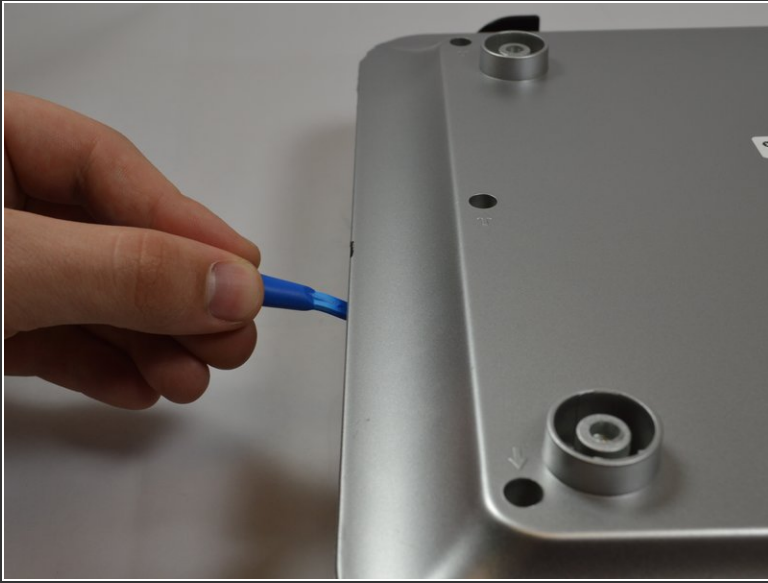
## Step 2



- Use iOpener or heat gun on all sides except the front.



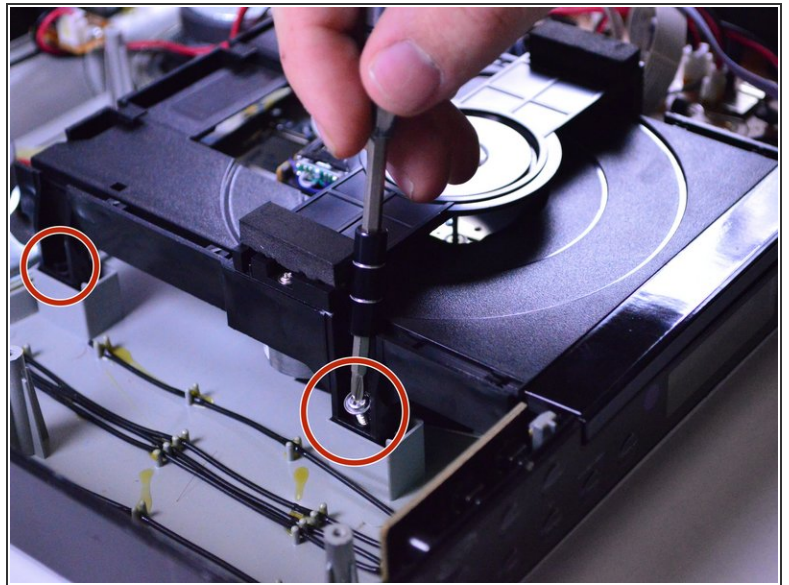
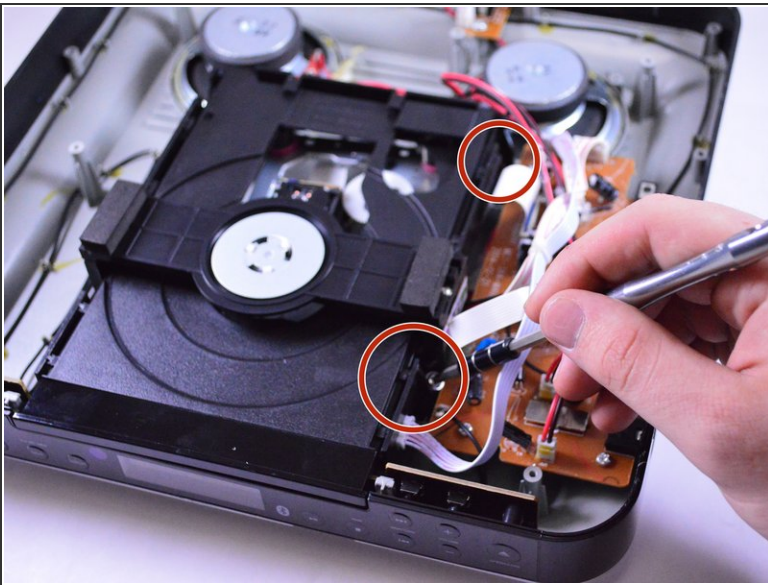
### Step 3



- Be cautious when taking the top of the device off there may still be some adhesive stuck to device.

⚠ The top of the device will be very difficult to remove because of the adhesive holding it together.

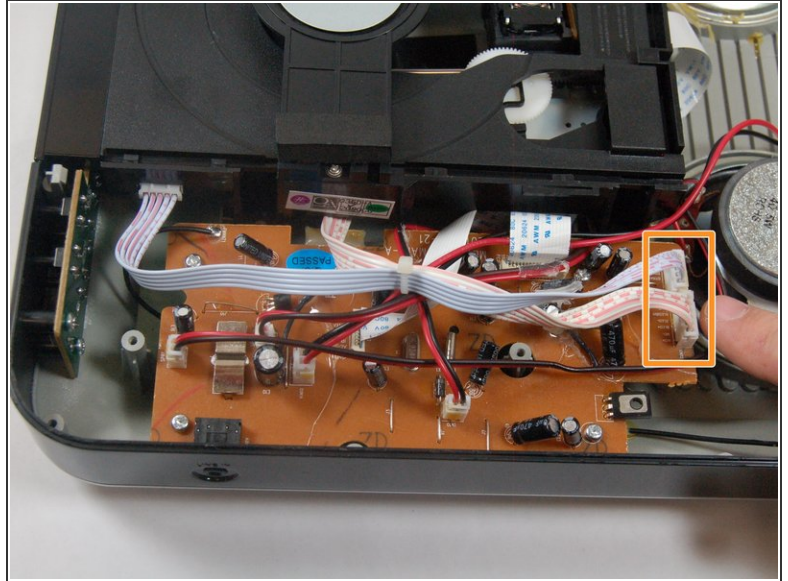
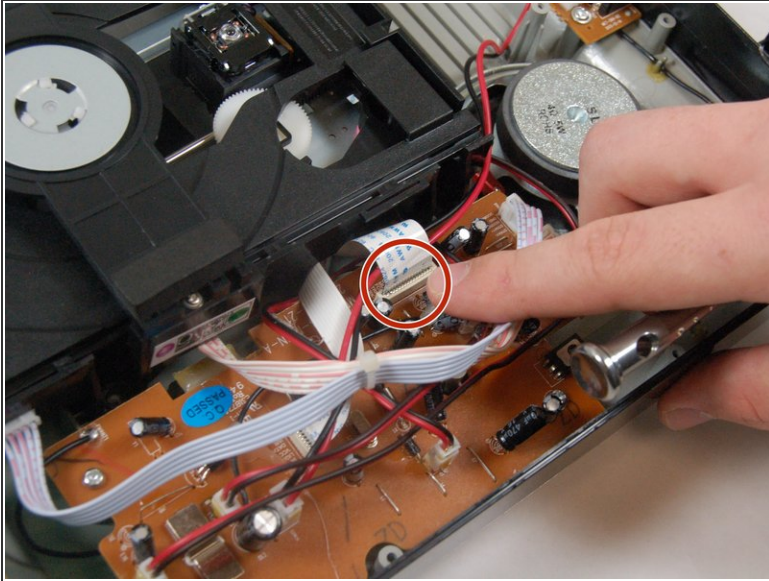
### Step 4 — FM/AM Antenna



- Remove all four screws(13.5 mm in length) that are securing the disk drive.

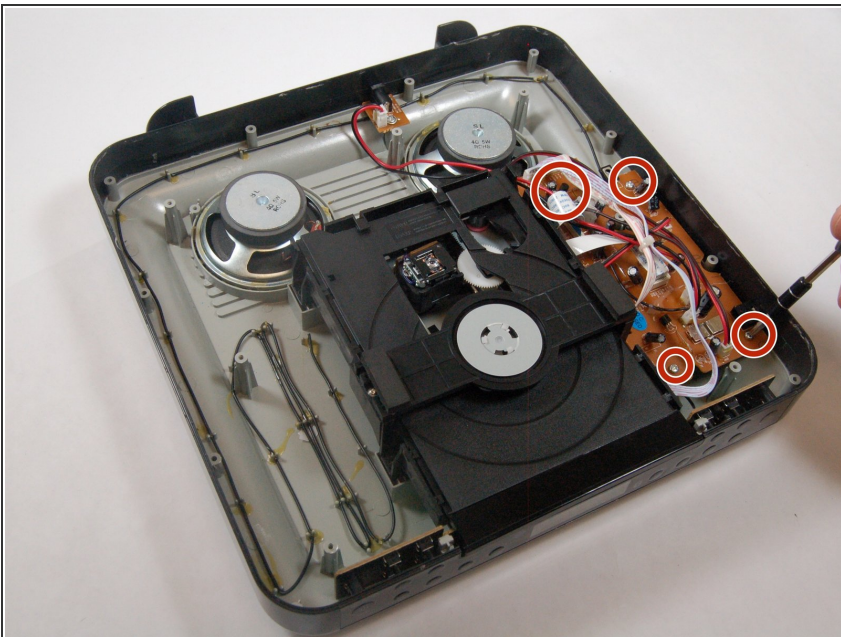


## Step 5



- Unplug the ribbon cable connected to the motherboard that stems from the disc drive.
  - Also, disconnect the two power connectors from the motherboard.
- i** Once you have removed the ribbon cables and two connectors on the motherboard the disk drive can be removed.

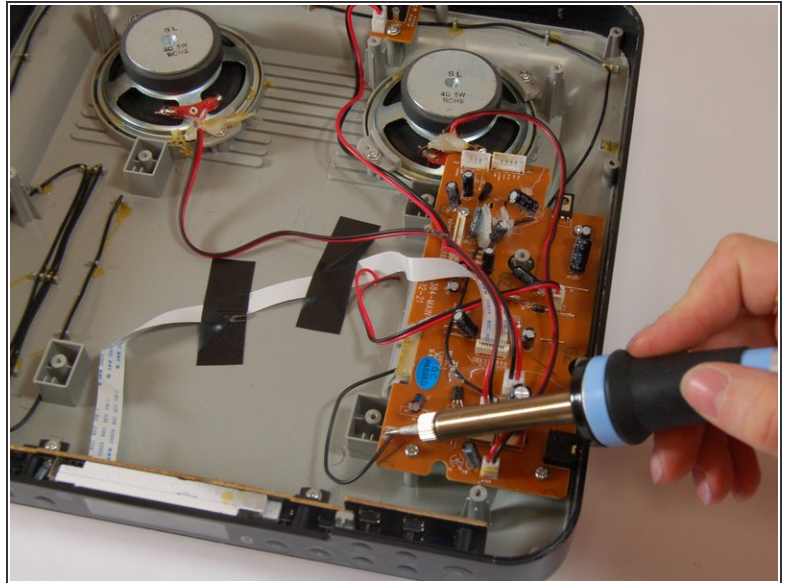
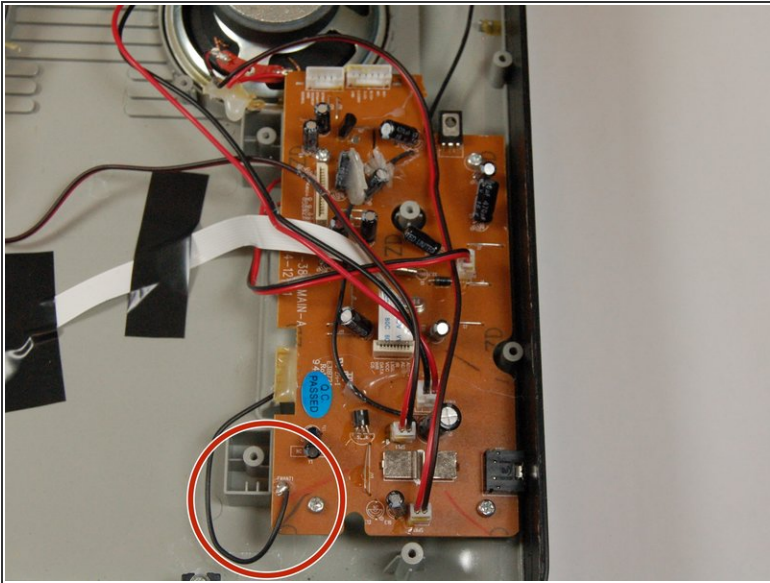
## Step 6



- After removing the top of the device, locate the screws on the motherboard. Gently unscrew all four of the 3.5mm screws on the motherboard.

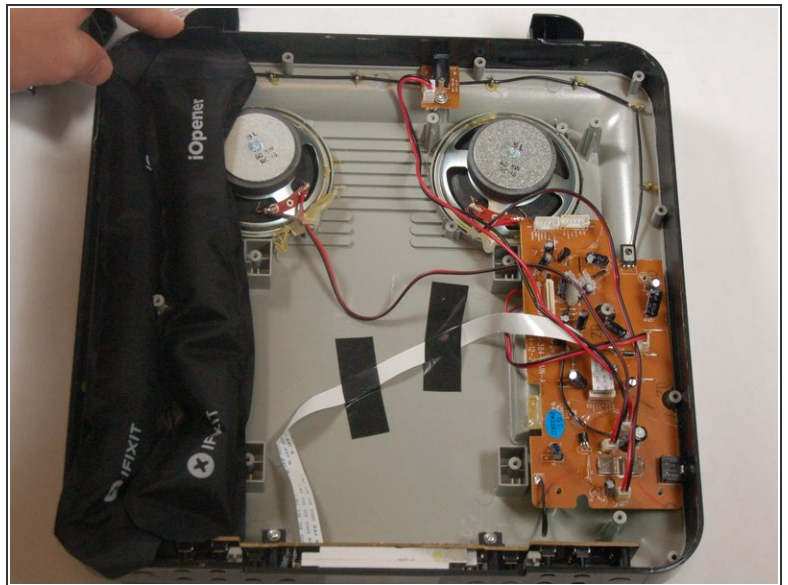
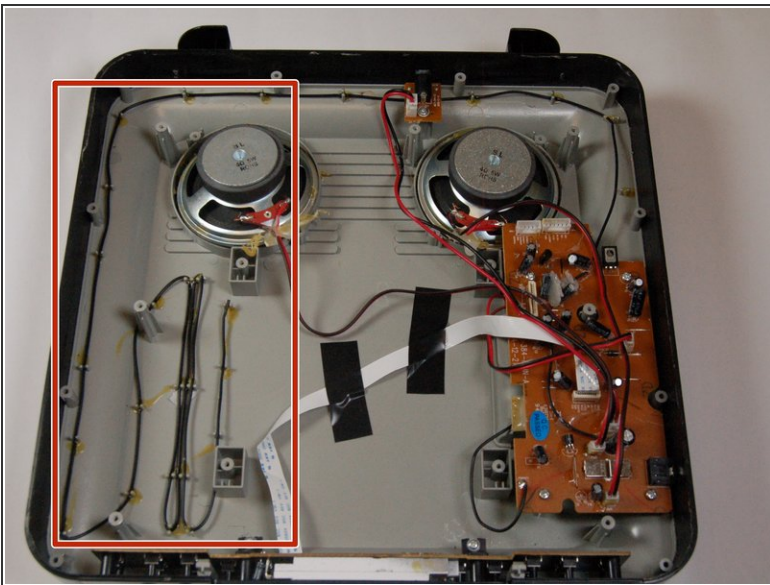


## Step 7



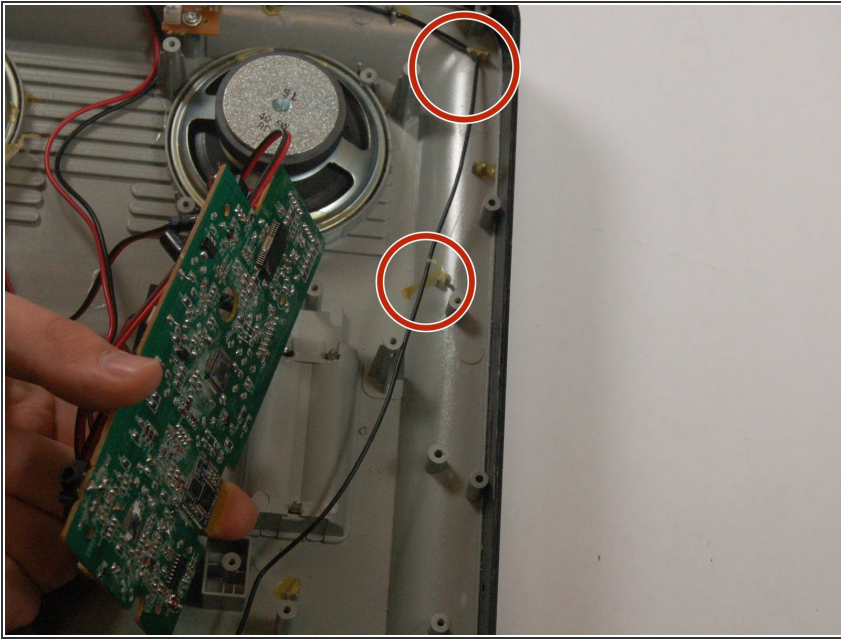
- Desolder the antenna at the contact point.
- ① Check out [this awesome guide](#) for soldering and desoldering tips.

## Step 8



- Place iOpener on antenna for approximately 5 minutes

## Step 9



- Lift up and remove all of the antenna.

⚠ The antenna will be glued down all the way around the radio

To reassemble your device, follow these instructions in reverse order.