



Turtle Beach Elite Pro Right Speaker Replacement

This guide will aid users in replacing the right speaker.

Written By: Alexis Uribe



INTRODUCTION

This guide will assist users in replacing the right speaker with a new speaker. It will be useful for users whose right speaker is no longer producing any sound or is producing sound that is broken and scratchy.



TOOLS:

- [Flush Wire Cutters](#) (1)
- [iFixit Opening Tools](#) (1)
- [Phillips #0 Screwdriver](#) (1)
- [Soldering Iron](#) (1)




PARTS:

- [Ear cushion](#) (1)
- Turtle Beach Elite Pro

Step 1 — Ear Cushions



- Firmly pinch ear cushion between thumb and forefinger.
- Using the hand not holding the ear cushion, grasp the orange plate that is below the ear cushion.

 If the black rubber lining on the orange plate is grasped, then the rubber lining on the ear piece may tear.

Step 2



- Rotate ear cushion counter-clockwise about half an inch.
- ⓘ The ear cushion should audibly snap out of place.
- After it has audibly snapped out of place, lift the ear cushion off of the device.
- ✦ During reassembly, rotate the ear cushion clockwise.

Step 3



- Using the new cushion, align the pegs located on both the orange plate and ear cushion.
- ☑ Make sure that both the ear cushion and the orange plate have the same designation.
- Once the pegs are aligned, push the new ear cushion in place.

Step 4 — Right Speaker



- Remove the right ear cushion.
- ⓘ The right ear piece does not have any additional attachments.

Step 5



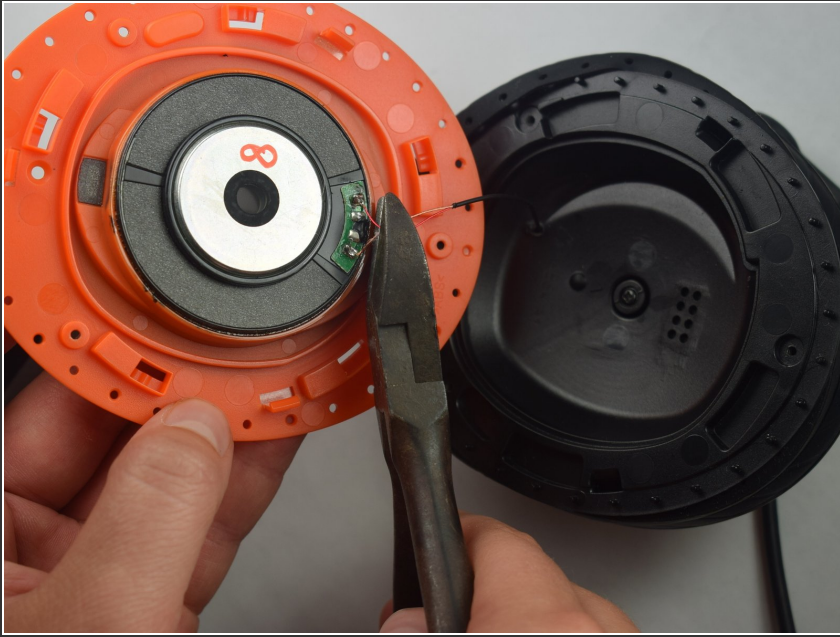
- Using the Phillips #0 screwdriver, remove the 6.0 mm screws on the orange plate.

Step 6



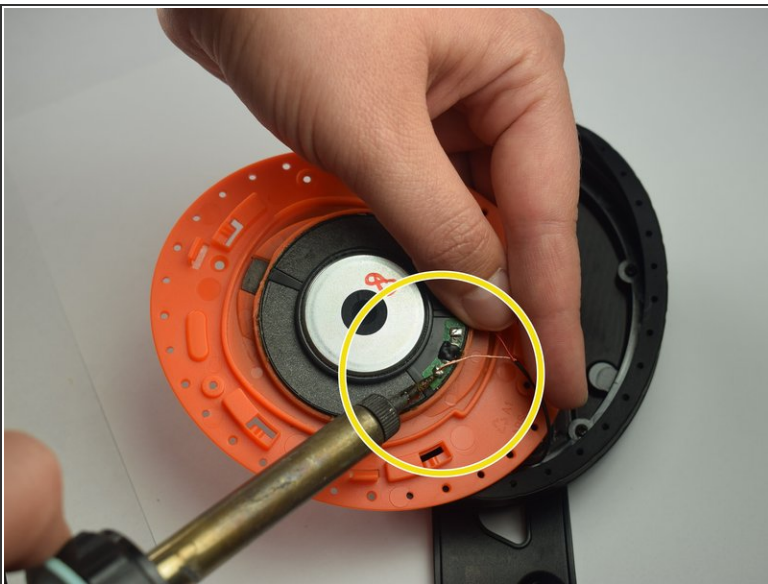
- Use the opening tool to separate the orange plate from the black base plate.
- Focus on the wires that are connected to the speaker.

Step 7



- Cut the two wires that are attached to the speaker.
- ⓘ Cut the wires as close to the speaker as possible. These wires will be used in the next step.

Step 8



- Replace the old speaker with the new speaker.
- Using the soldering iron, solder the wires to the new speaker.
- ⓘ Make sure to solder the wires to their original locations on the speaker.

To reassemble your device, follow these instructions in reverse order.