



LG Tone Pro HBS-760 Speaker Replacement

Replace the right and left speaker.

Written By: Faizan Naveed





TOOLS:

- [Pry Bar](#) (1)
- [Phillips #00 Screwdriver](#) (1)
- [Soldering Iron](#) (1)

Step 1 — Locate Hidden Screw



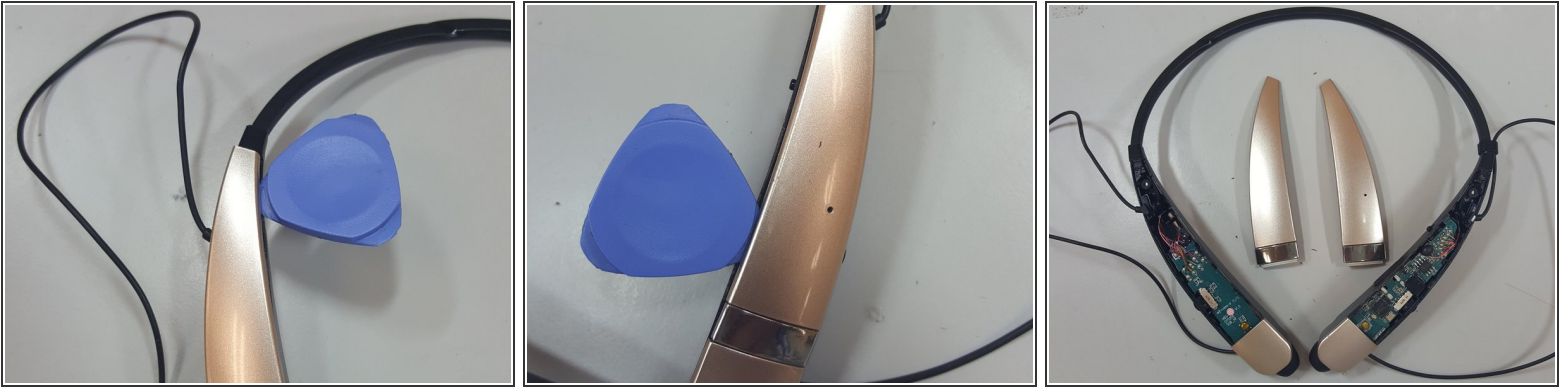
- Locate the right and left side speaker where the hidden screw is located and remove the rubber piece covering the screw.

Step 2 — Remove Hidden Screw



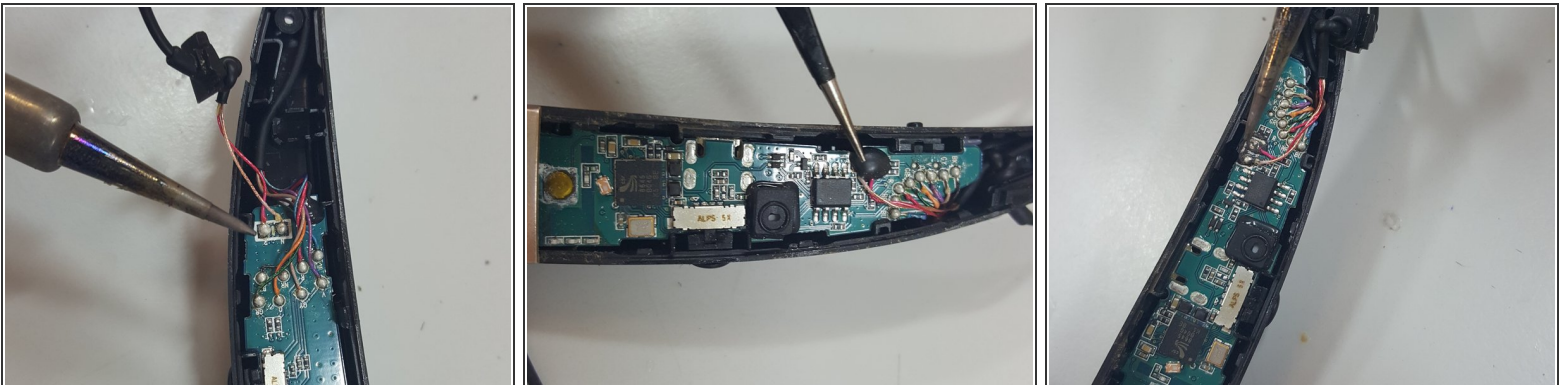
- Using a Philips #00 screwdriver, remove the hidden screws from both sides.

Step 3 — Pry Open Housing



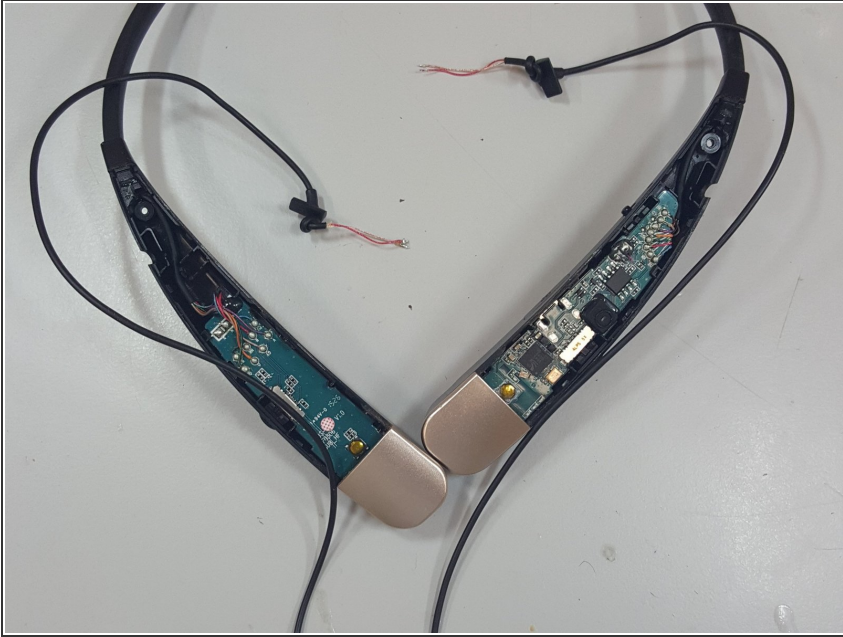
- Use a guitar pick or any opening tool to pry open the housing for the side you want to replace the speaker.

Step 4 — Desolder Speaker



- Right side can be de-soldered right away but the left side speaker solder connection to the board is covered by rubber material which needs to be removed first before it can be de-soldered.

Step 5 — Replace Speakers



- Once the speakers have been desoldered, replace with new ones.

To reassemble your device, follow these instructions in reverse order.