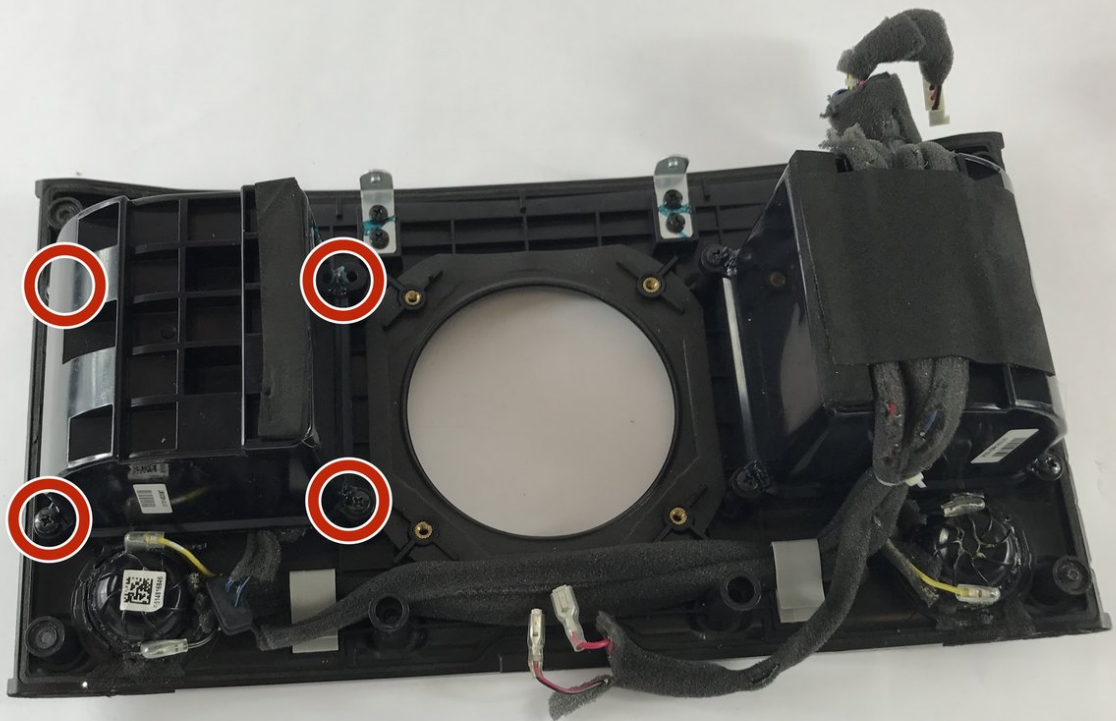




# Sonos Play 5 Mid- Range Speakers Replacement

Replacement of the Mid-Range Speakers in the device.

Written By: Warren Girouard



---

# INTRODUCTION

Replacement of the Mid-Range Speakers in the device.



## TOOLS:

- [Phillips #2 Screwdriver](#) (1)
  - [Heavy-Duty Spudger](#) (1)
-

## Step 1 — Front Panel Assembly



- Disconnect any power to the speaker and wait a few minutes for the capacitors to fully discharge.
- Flip the speaker upside down.
- ⓘ There may be a rubber foot covering the bottom screws (not included in picture). Remove this by pulling up from one of the corners using a spudger.

## Step 2



- Remove eight 10mm Phillips #2 screws
- Remove the bottom panel by pulling upwards.
- ⚠ Be very gentle with the ends of the three antennas. They are very fragile.

### Step 3



- Flip the device so that the grille is facing up.
- Locate the line on the right side of the speaker where the grill and the plastic meet, and place your plastic opening tool in the gap.
- Run the spudger along the gap, loosening the grille from the plastic. Repeat this process on the left side as well.
- Gently pull up on the grille, removing it from the front panel.


### Step 4



- Remove the six 8mm Phillips #2 screws.
- Remove the two 10mm Phillips #2 screws.

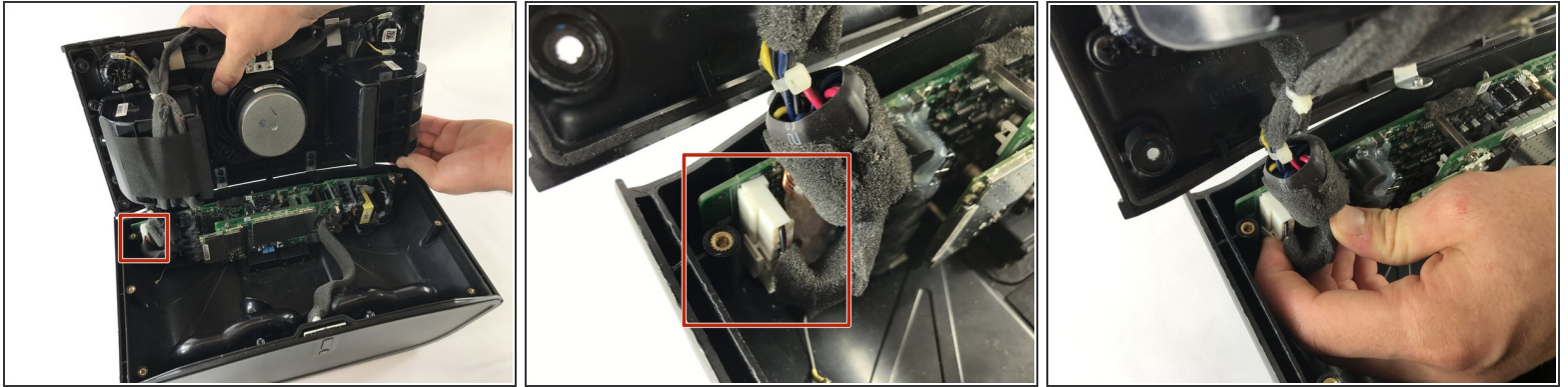
## Step 5



- Locate the line on the right side where the front panel and back panel meet. Place a plastic opening tool in the gap, and run it along the gap. Repeat this on the left side.
  - Use the opening tool to lift the front plate. If a plastic tool is not providing enough leverage, use a metal opening tool.
  - Gently pull up on the face plate to ensure it has been detached from the enclosure.
-  When pulling on the face plate be cautious because it is still connected by wires on the back of the plate.

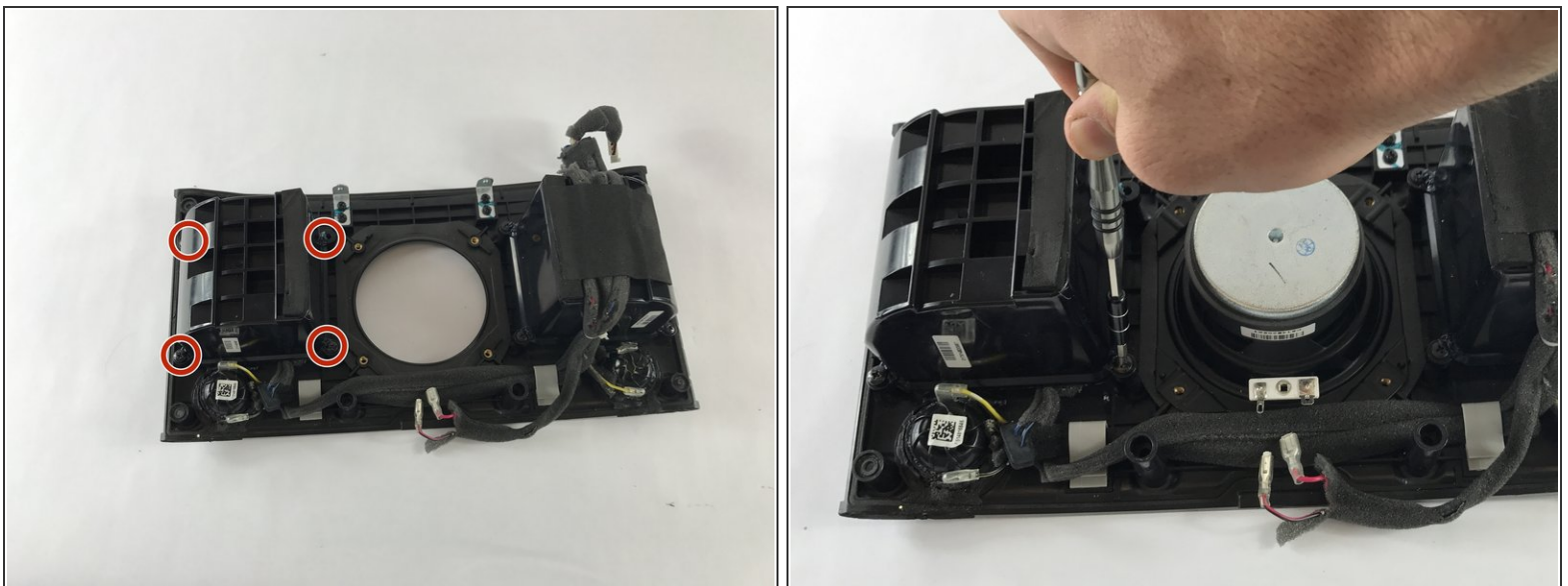


## Step 6



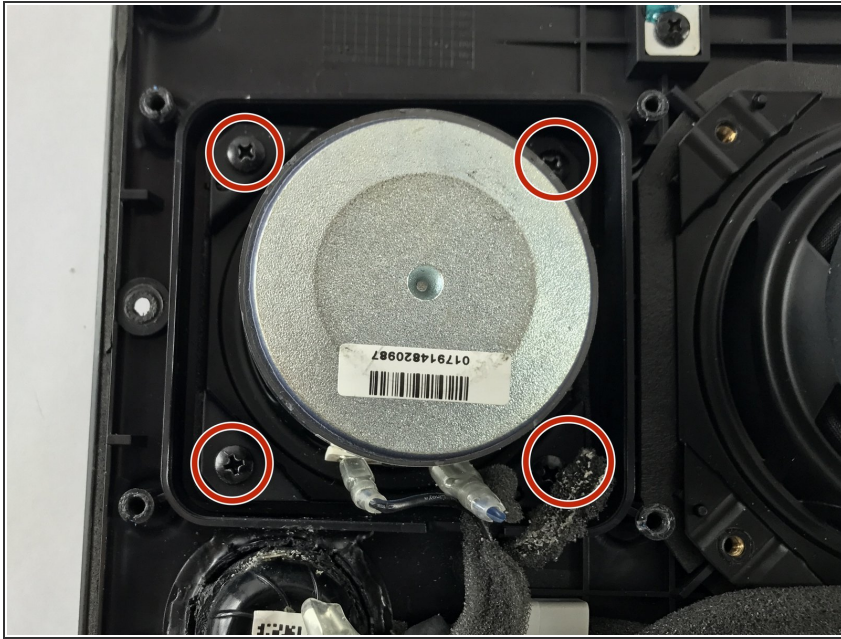
- Lift up the front panel, forming a 90 degree angle with the back panel. Locate the locate ten pin connector shown. This is the wire that connects the front panel to back panel.
- Press down on the small tab located on the connector. With the tab firmly pressed down, pull the connector out from its socket.
- The faceplate assembly is now fully detached from the rest of the speaker.

## Step 7 — Mid- Range Speakers



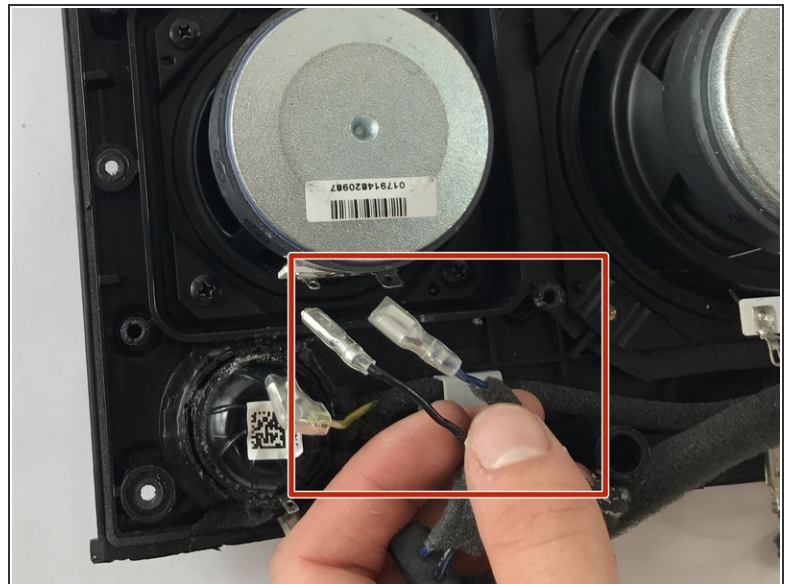
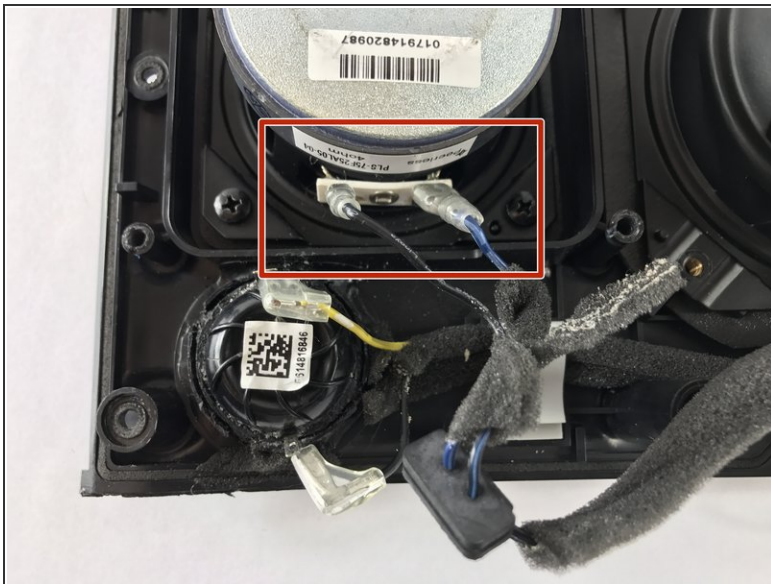
- Remove four 9.5mm Phillips #2 screws.

## Step 8



- Remove four 9.5mm Phillips #2 screws.

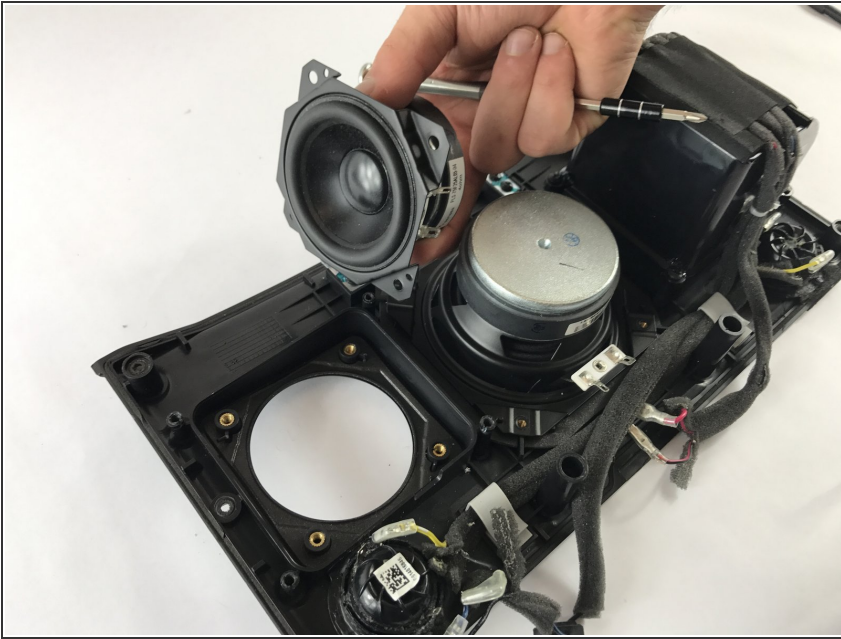
## Step 9



- Unplug the wires connected to the left speaker.

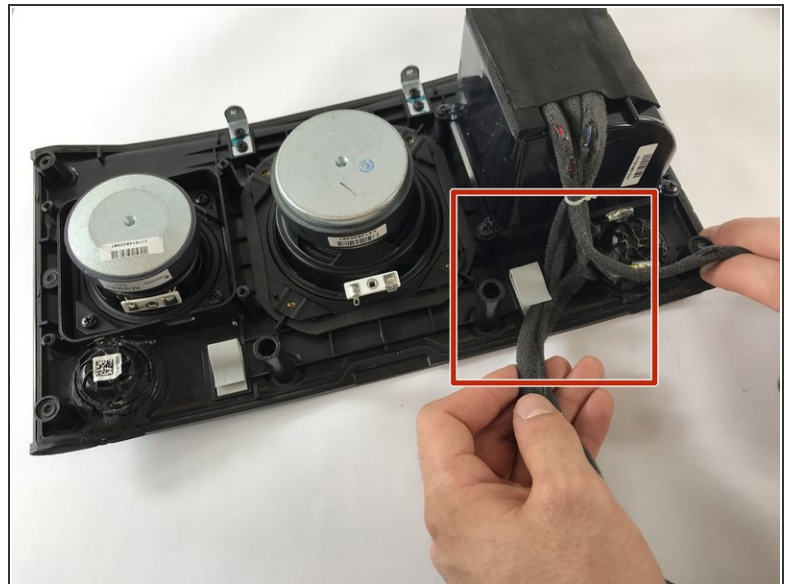
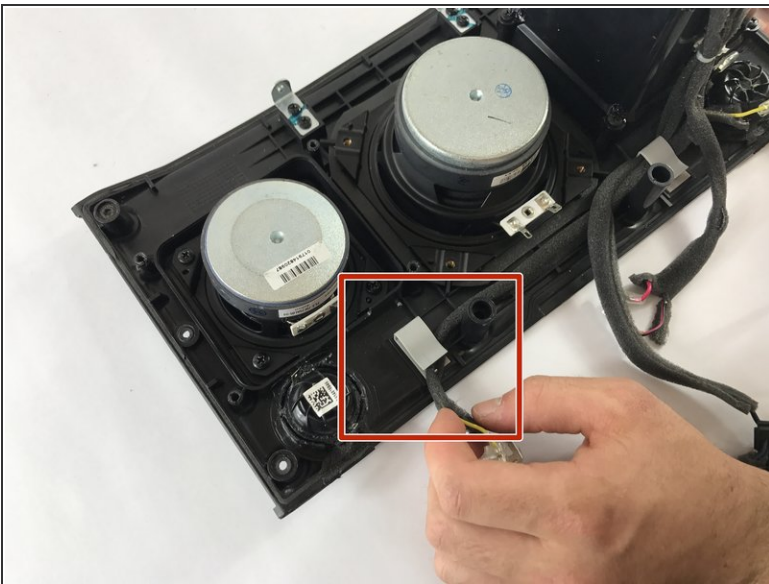


## Step 10



- Pull the left speaker up and away from the front panel.

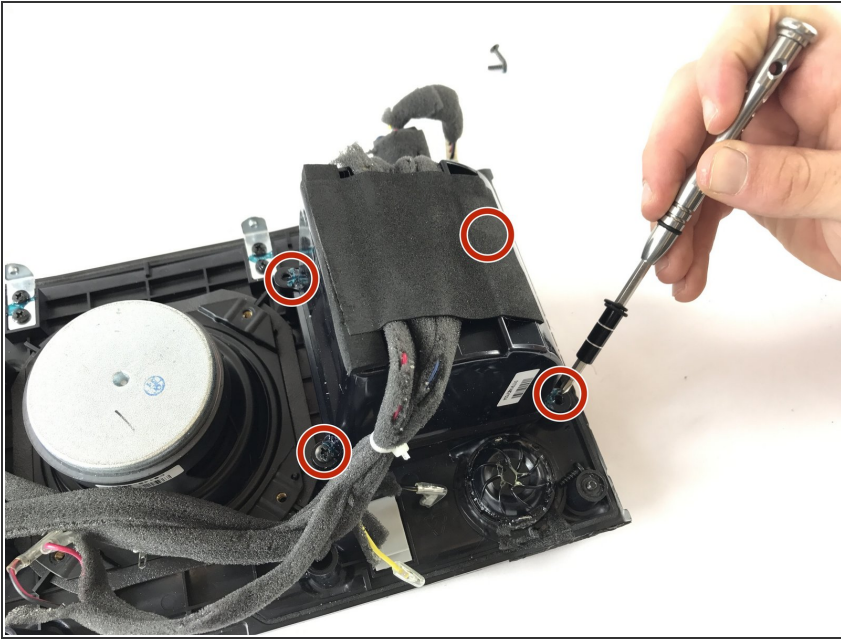
## Step 11



- Remove the wires from the plastic clips on the bottom of the front panel.



## Step 12



- Remove four 9.5mm Phillips #2 screws.

## Step 13



- Remove the plastic speaker cover by lifting up and away.

## Step 14



- Remove four 9.5mm Phillips #2 screws.

## Step 15



- Remove the right mid-range speaker by pulling up and away from the front panel.

To reassemble your device, follow these instructions in reverse order.