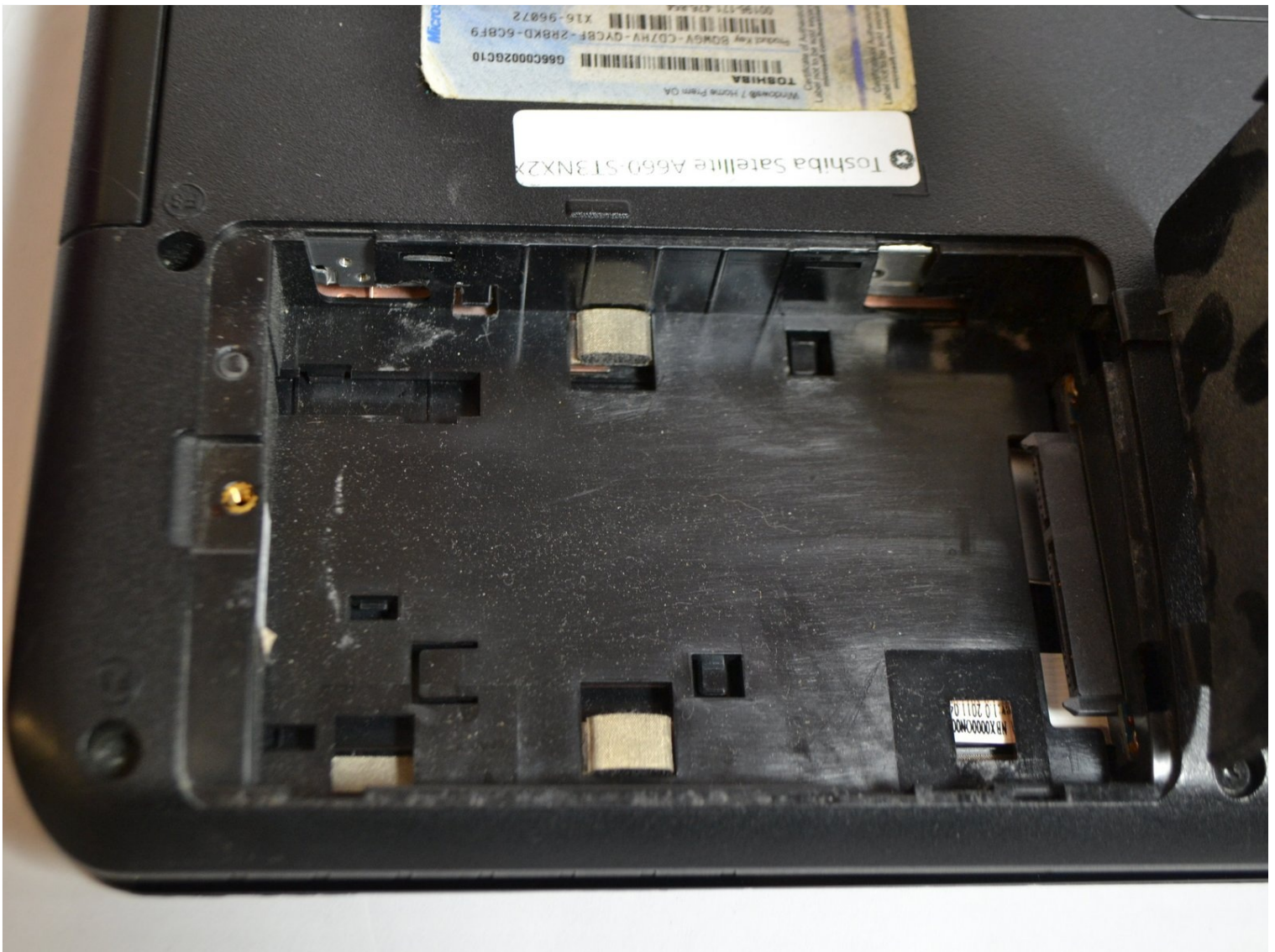




Toshiba Satellite A660-ST3NX2X Hard Drive Replacement

This replacement guide is to walk you through a...

Written By: Cassie Pickett



INTRODUCTION

This replacement guide is to walk you through a hard drive replacement on your Toshiba Satellite A660-ST3NX2X. Before starting this replacement, make sure you have a replacement hard drive that is made for this computer and model. Also, make sure the computer is powered off and completely shut down before completing this replacement.



TOOLS:

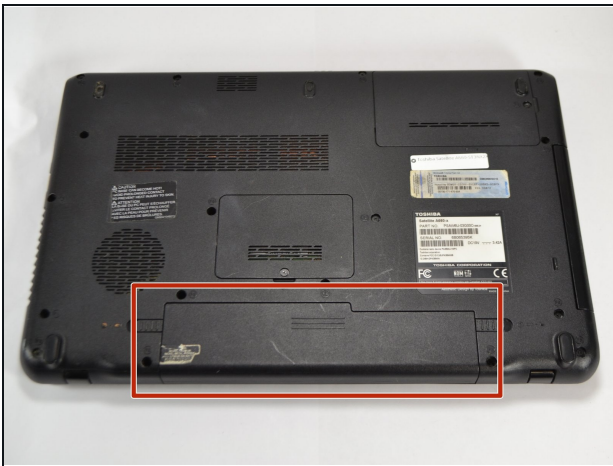
JIS Driver Set (1)
J00



PARTS:

Toshiba Satellite A660 ST3NX2X Hard Drive (1)

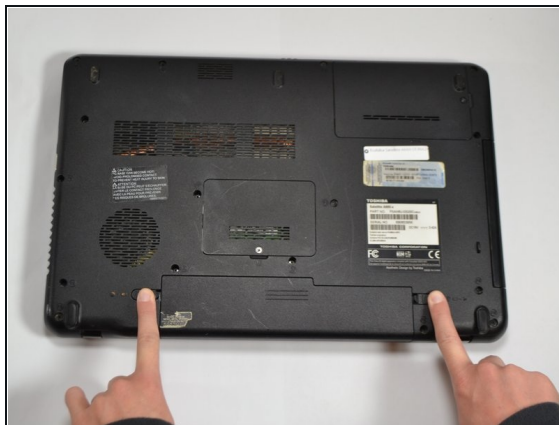
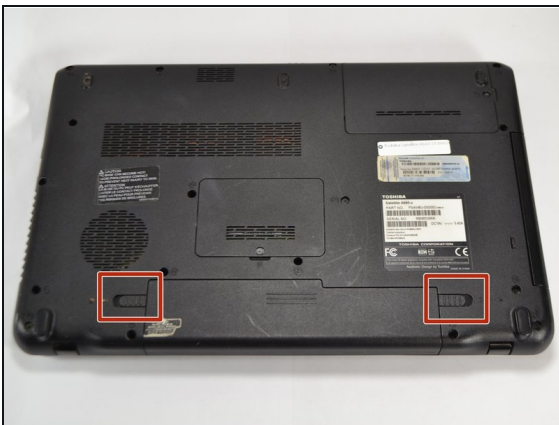
Step 1 — Battery



⚠ Unplug all cables and other devices from the computer before starting this replacement.

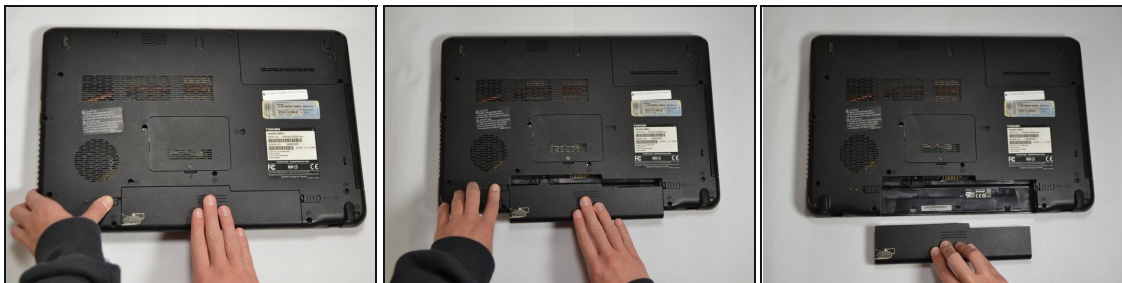
- Turn the computer over, so the screen is facing down and the battery is positioned in front of you.

Step 2



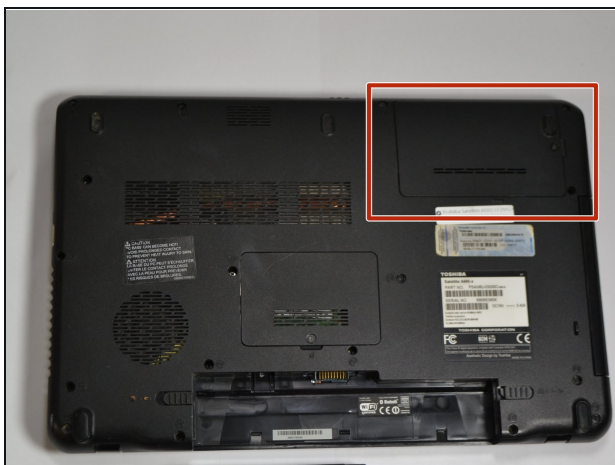
- Locate the two sliding tabs on either side of the battery.
- Using both hands, place one finger on each tab and slide them to the sides and away from each other.

Step 3



- Pull the battery out, keeping the tabs pushed to the side.
- ❗ The right tab on this laptop stayed pushed to the right without needing to be held in place.

Step 4 — Hard Drive



⚠️ Unplug all devices from your computer and power down the device completely.

- Flip the computer over so the screen is facing down.
- In the image, the hard drive will appear to be in the top right corner where the box indicates.

Step 5



- Use a J00 bit to unscrew the single 4mm screw that holds the hard drive cover in place.

Step 6



- Remove the cover that holds the hard drive in place.
- Remove the hard drive.
 - ⓘ This computer contains no hard drive, therefore we are unable to show the physical removal of it.

To reassemble your device, follow these instructions in reverse order.