



Sony Vaio PCG-161L Hard Drive Replacement

How to replace the hard drive on your Sony Vaio PCG-161L.

Written By: Roman Alshehri



INTRODUCTION

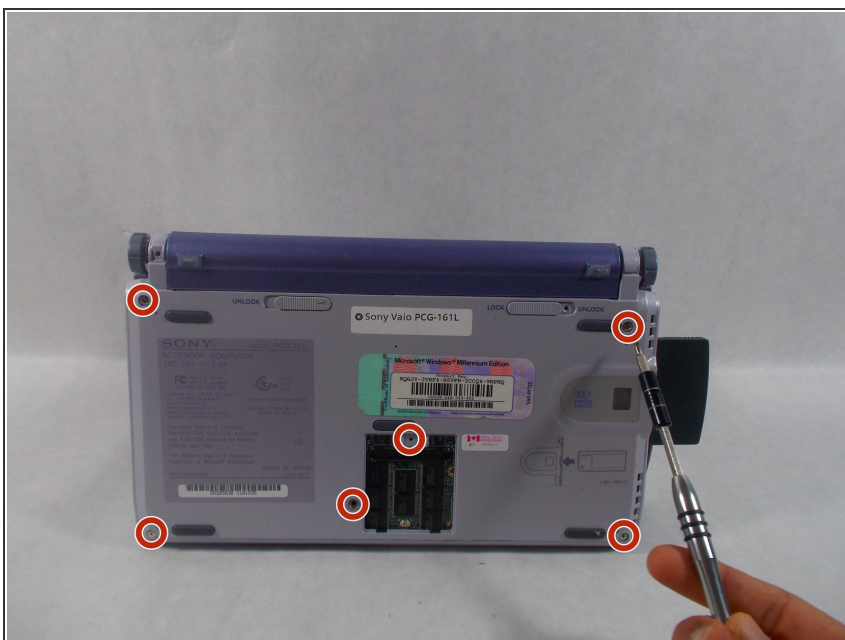
If your computer is running slow it may be due to a hard drive error. This guide will show you how to replace the hard drive in your Sony Vaio PCG-16L.



TOOLS:

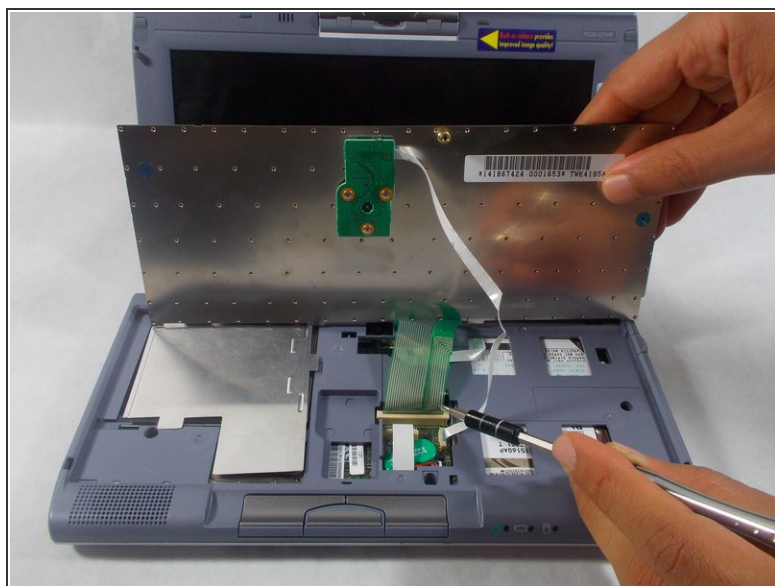
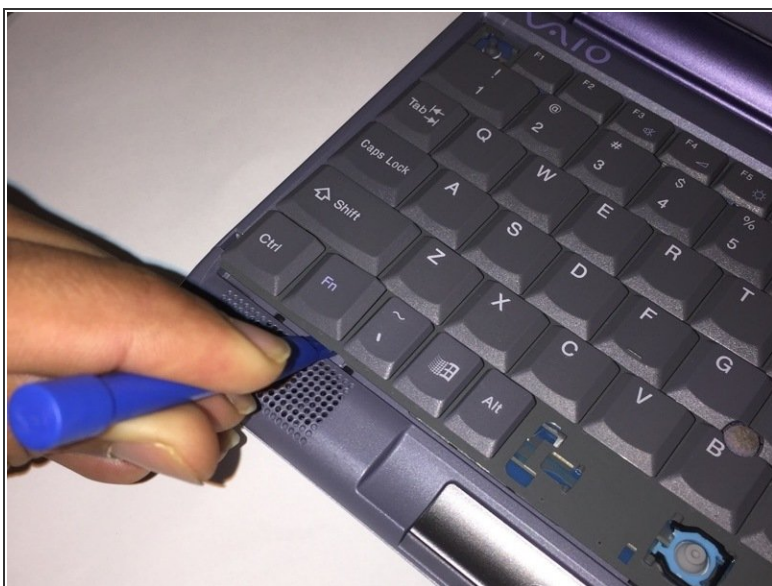
- [Phillips #0 Screwdriver](#) (1)
-

Step 1 — Keyboard



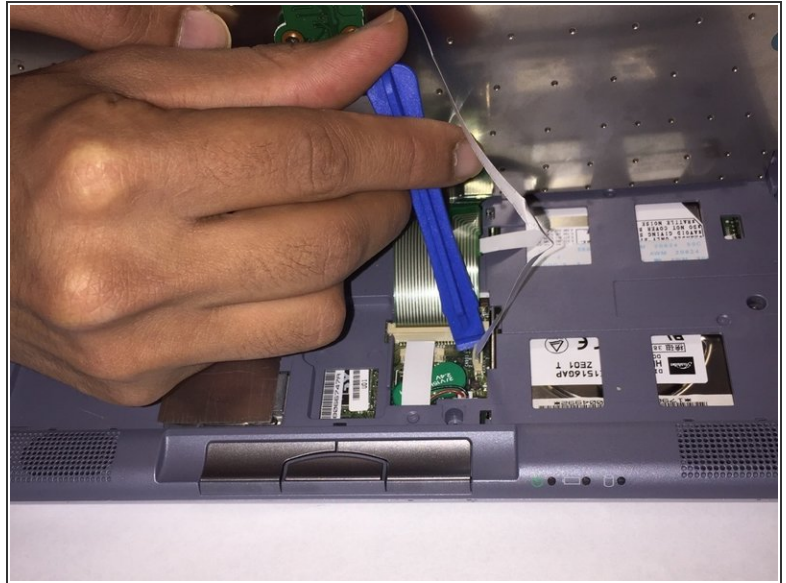
- Turn your device upside down and remove the 6 10mm screws attaching the back casing to the device using a phillips head screwdriver.

Step 2



- Lift up underneath the keyboard using the iFixit opening tool to expose the ribbon wires connecting the keyboard to the motherboard.

Step 3



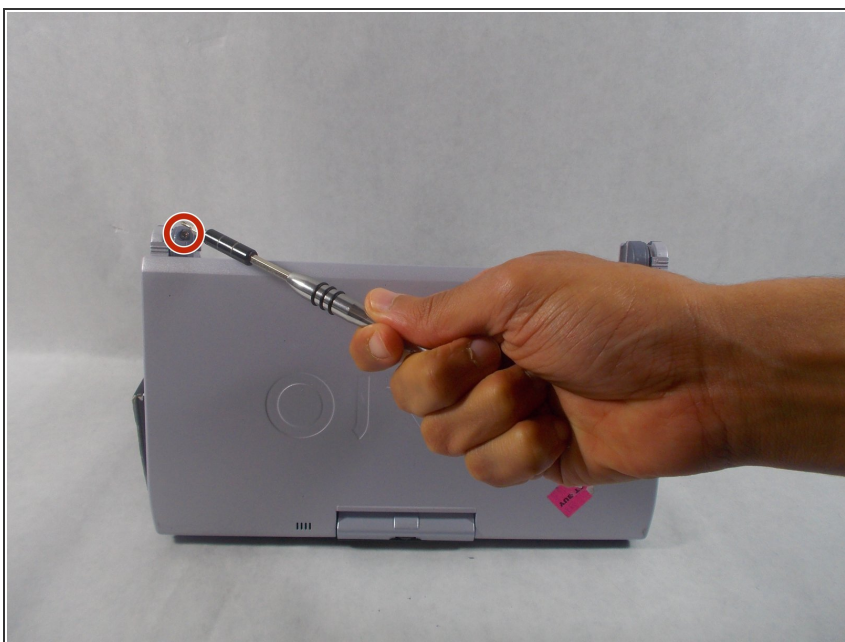
- i** The two ribbon cables connecting the keyboard to the motherboard are held in using zero insertion force (ZIF) connectors.
- Use a plastic opening tool or your fingernail to flip up the small retaining flaps, then pull the ribbon cables out of their connectors.

Step 4 — Hard Drive



- Remove the three 10 mm screws holding the casing to the top of the motherboard using a Phillips screwdriver.

Step 5



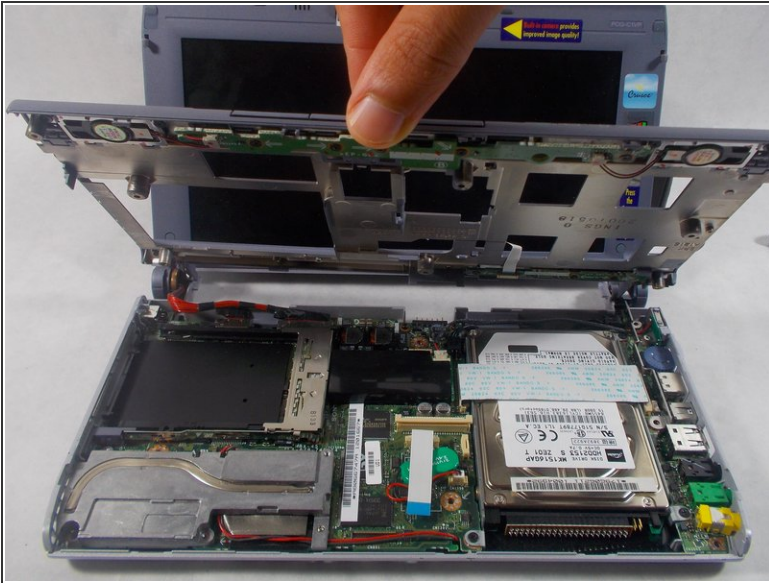
- Remove the 6 mm screw on the left side of the battery that holds the casing to the device using a Phillips head screwdriver.

Step 6



- Turn the device upside down and remove the other 6 mm screw holding the casing to the device using a Phillips head screwdriver.

Step 7



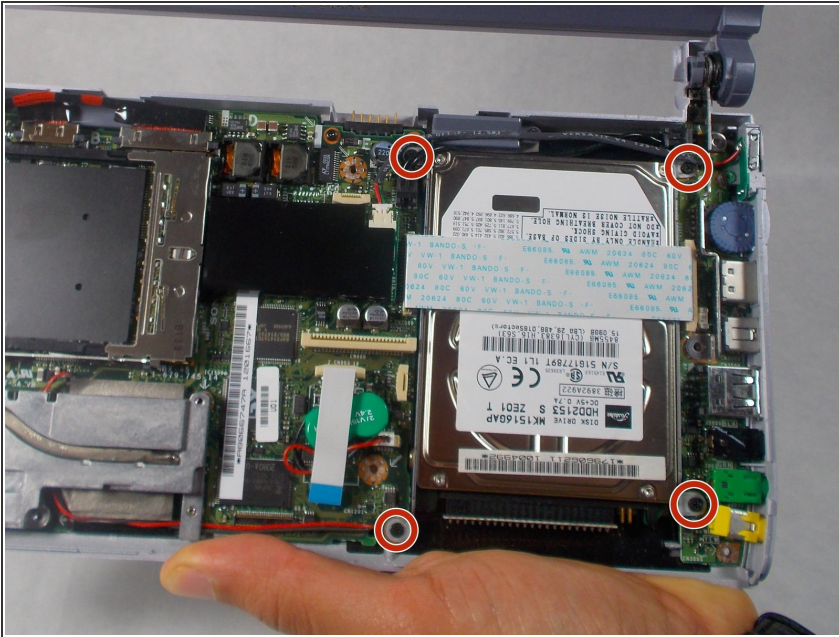
- Remove the top casing by lifting up on the plastic.
- ⓘ There are no longer any wires connecting the casing to the motherboard. The casing can be fully removed and put to the side.

Step 8



- The ribbon cable covering the hard drive and connecting to the motherboard is held in using zero insertion force (ZIF) connector.
- Use the tip of a spudger or your fingernail to flip up the small retaining flaps, then pull the ribbon cable out.

Step 9



- Remove the four 5 mm screws holding the hard drive to the motherboard.

Step 10



- Remove the ribbon cable connecting the motherboard to the hard drive by pulling the female connector off of the pins attached the hard drive.

To reassemble your device, follow these instructions in reverse order.