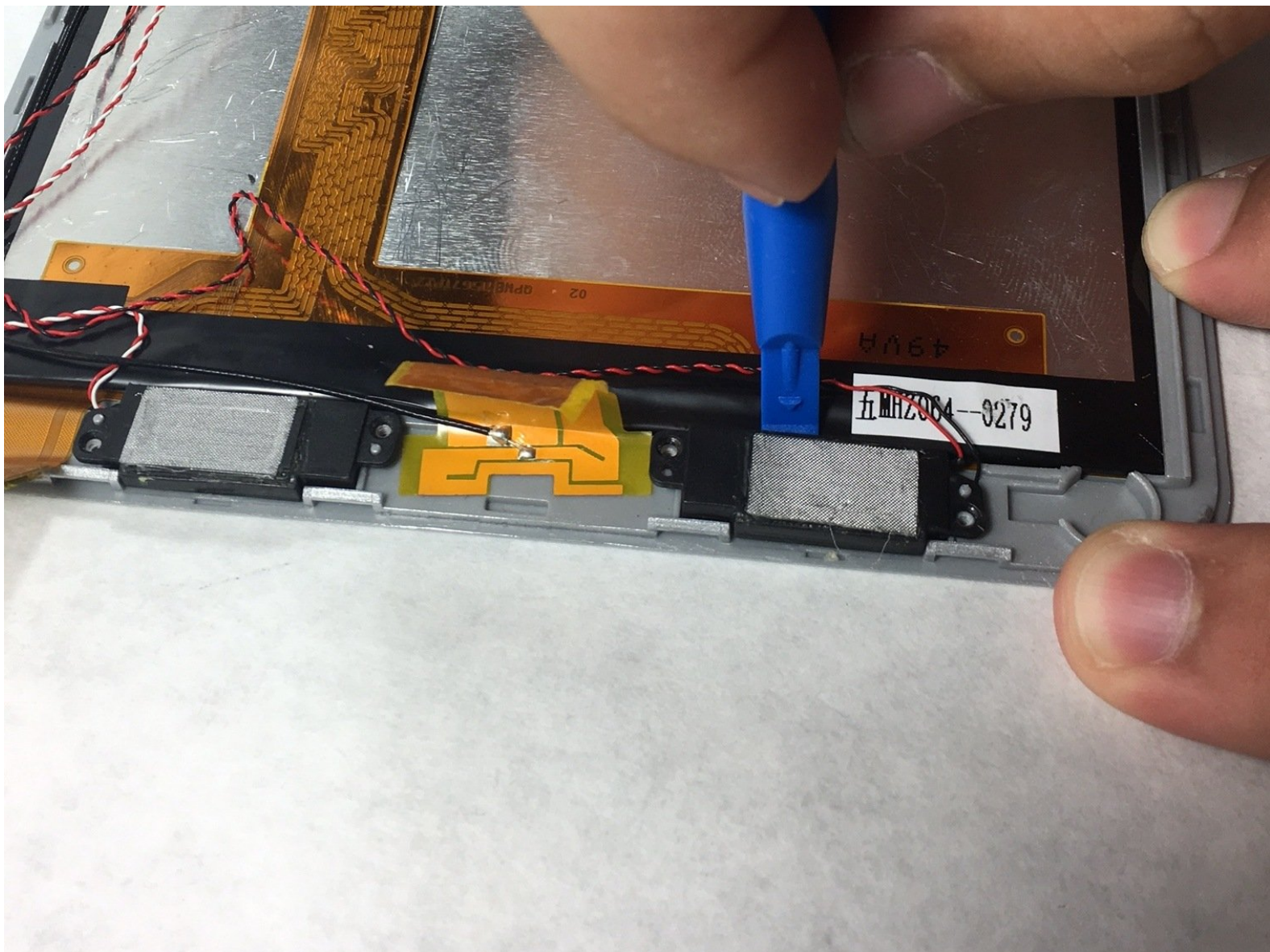




Insignia Flex Elite 7.85 Speakers Replacement

If you hear distorted audio or no sound at all, you may want to replace the speakers in your Insignia Flex Elite 7.85.

Written By: Antonio Olivieri



INTRODUCTION

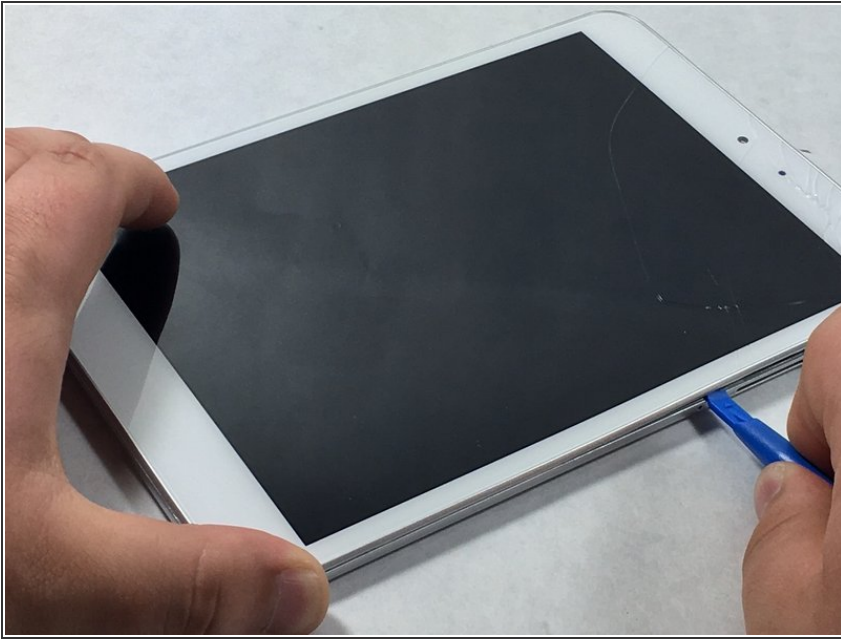
This guide provides instructions on how to replace the speakers in your Insignia Flex Elite 7.85.



TOOLS:

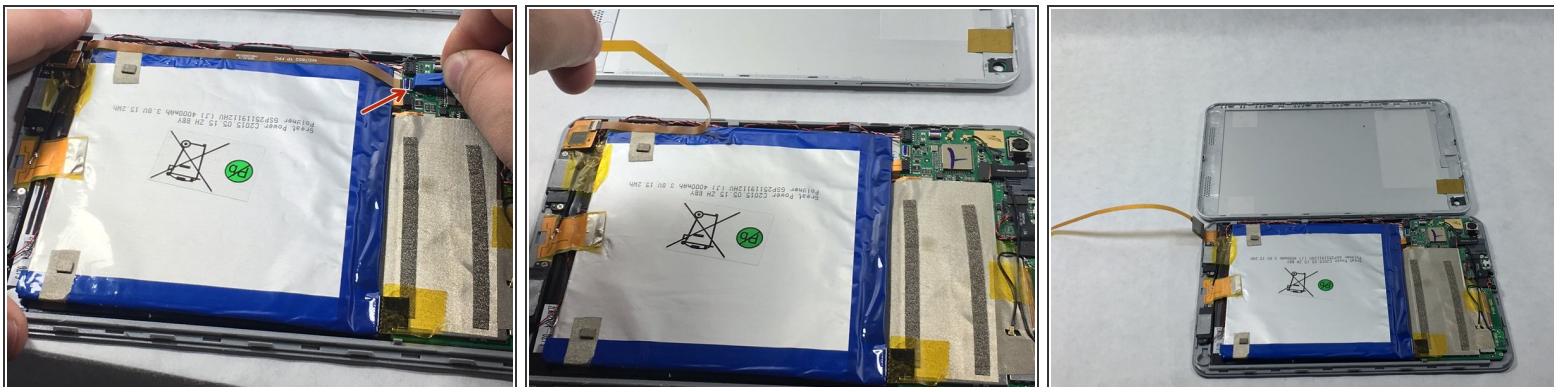
- [iFixit Opening Tools](#) (1)
 - [Phillips #000 Screwdriver](#) (1)
 - [Soldering Iron](#) (1)
-

Step 1 — Speakers



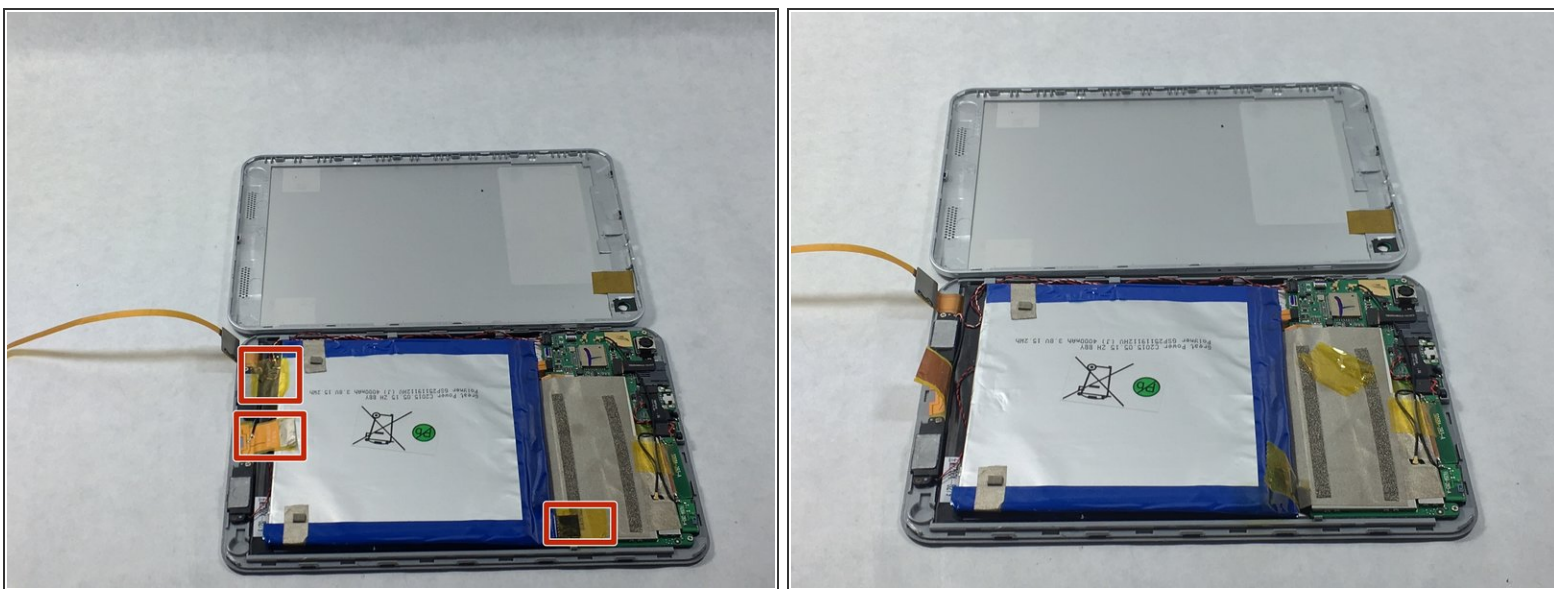
- ⚠ Make sure the device is turned off before taking it apart to avoid any injuries.
- Use a plastic opening tool to remove the metal backing of the tablet.
- Insert the plastic opening tool between the screen and metal backing. Use a prying motion to lift the front case from the metal panel.
- Move the tool around the perimeter of the device until the screen separates from the back panel.
- ⓘ The volume and power button will become free from device when the screen and metal backing are separated. These small pieces are easy to lose, be careful. They're easy to put back into place when reassembling the tablet.

Step 2



- Use a plastic opening tool to free the orange connector ribbon by placing the tool on the connector.
- Peel the connector ribbon and bend it backwards so it is not in the way.

Step 3



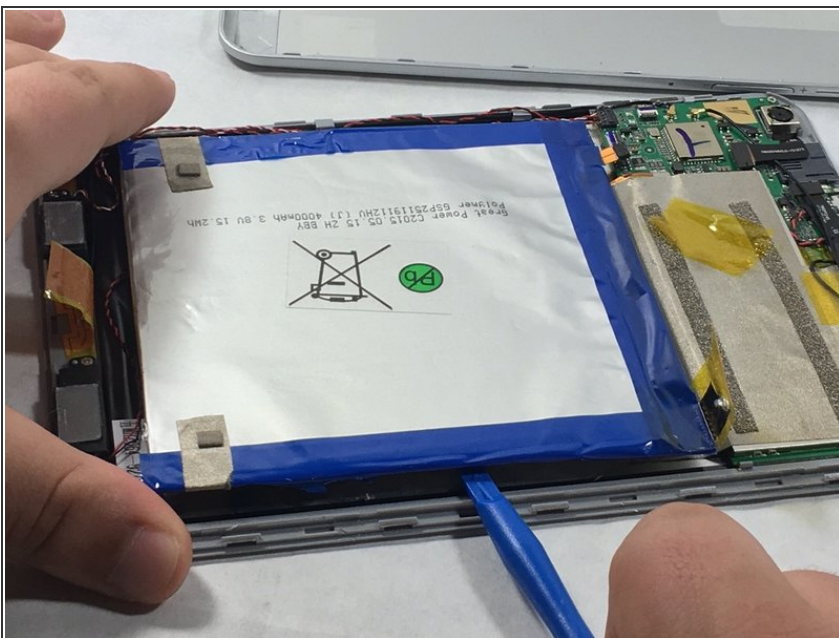
- Peel back the three pieces of tape circled in the picture.

Step 4



- Free the battery from the motherboard by prying slightly with the opening tool.

Step 5



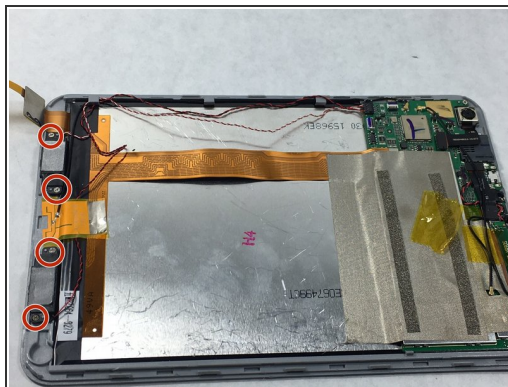
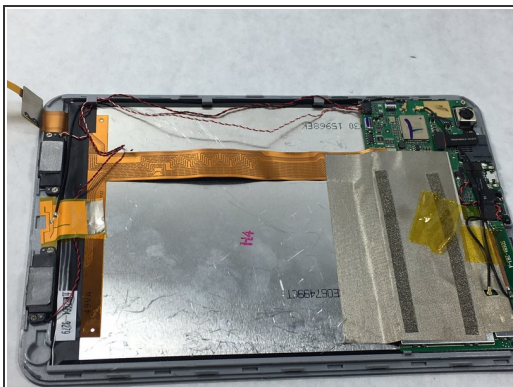
- Use the plastic opening tool to remove the battery from the screen.
- Place the tool between the battery and casing. Move the tool around the border of the battery until it is free.

⚠ Do not bend or puncture the battery or the battery will begin to leak.

ⓘ This step is very crucial. Be careful and do not rush through it.

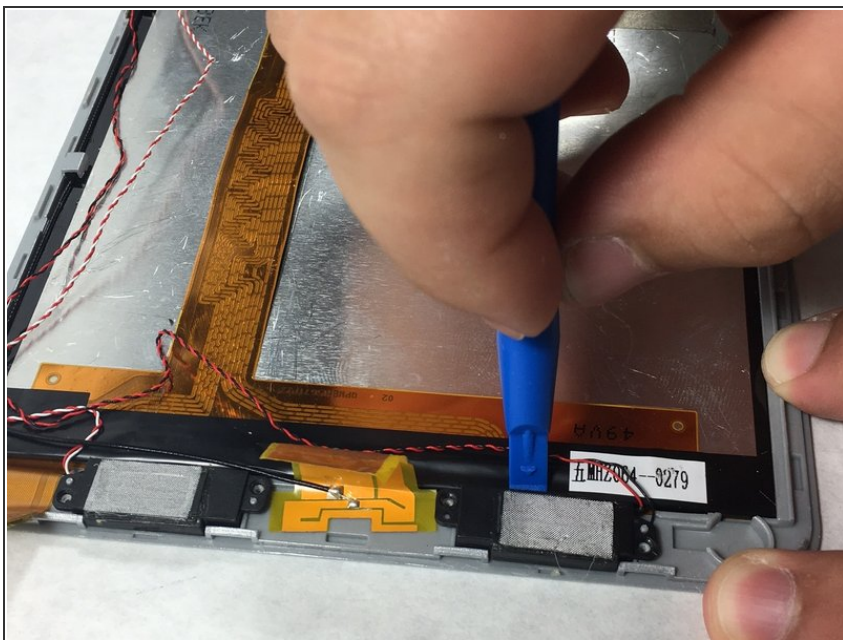
ⓘ The glue on the back of the battery is difficult to free up.

Step 6



- Take the battery out carefully from the tablet.
- Take out the four screws circled in the second picture with the #000 Phillips screwdriver.

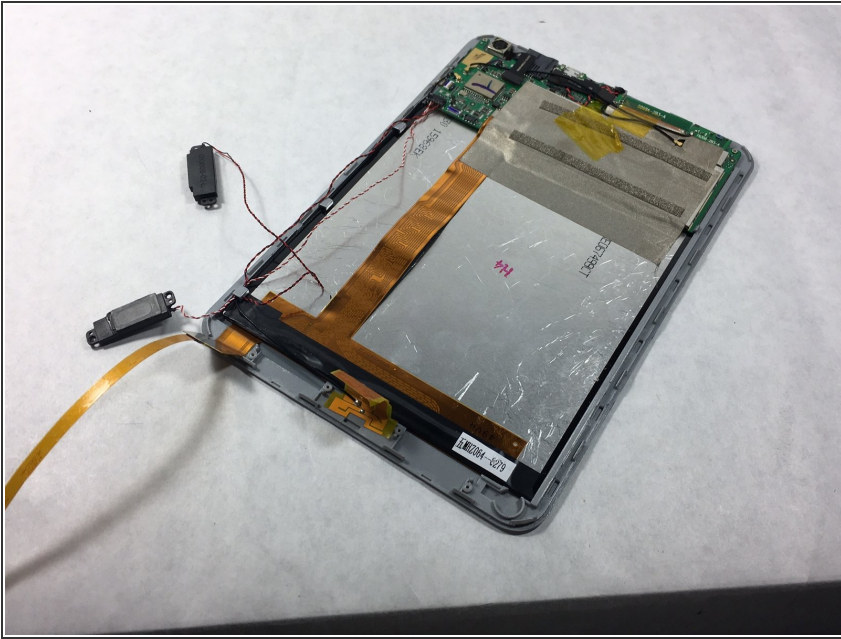
Step 7



- Use a plastic opening tool to pry the speakers from their slots.

⚠ Be careful not to break the small plastic spokes which hold the speaker in place.

Step 8



- Place the speakers on the side.
- Trim the wires with a wire cutter to solder the new speakers in place.

To reassemble your device, follow these instructions in reverse order.