

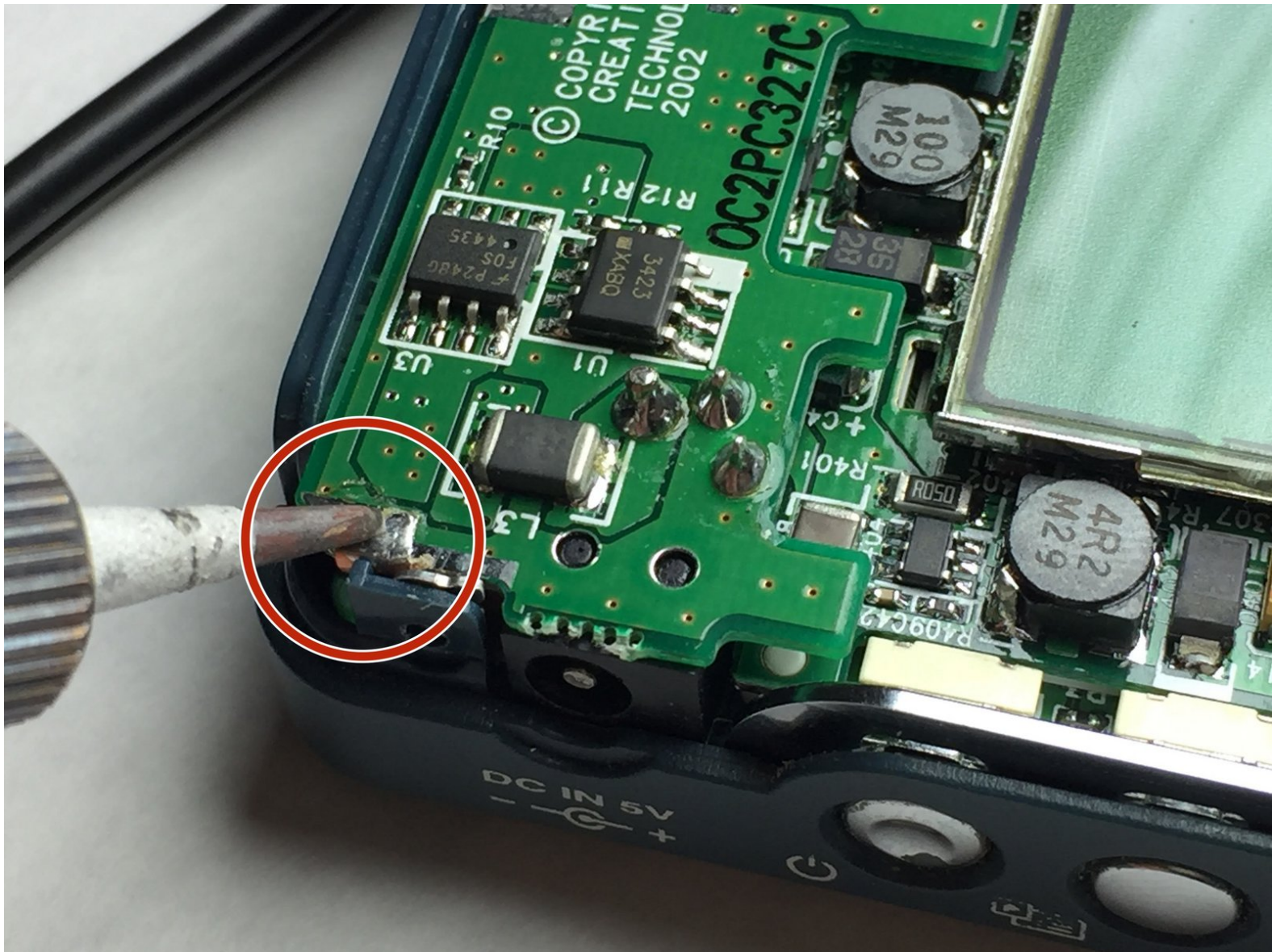


Creative Nomad Jukebox Zen Auxiliary Jack

Input placement

This guide will show you step by step how to replace the old auxiliary jack input in your Creative Nomad Jukebox Zen.

Written By: Bradley McHugh



INTRODUCTION

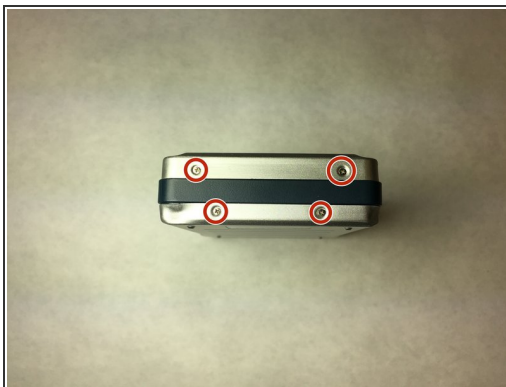
Hello! This guide will show you the steps to replace the auxiliary jack in your Creative Nomad Jukebox Zen Device and have you listening to your music again in no time! Please use caution when using the soldering tool.



TOOLS:

- [JIS Driver Set](#) (1)
 - [Spudger](#) (1)
 - [Soldering Iron](#) (1)
 - [Solder](#) (1)
 - [iFixit Opening Tools](#) (1)
-

Step 1 — Front and Back Cover



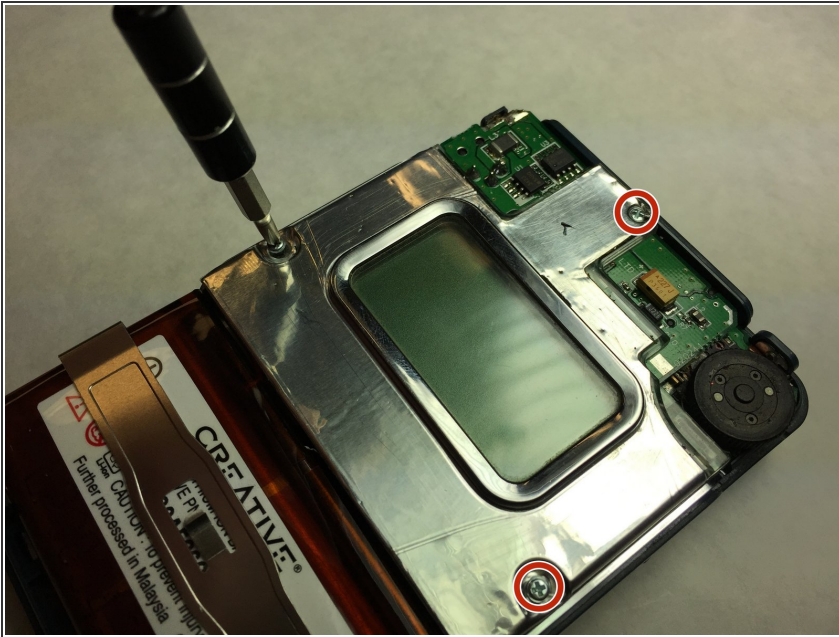
- Use a J0 screwdriver to remove the eight 3.5mm screws.

Step 2



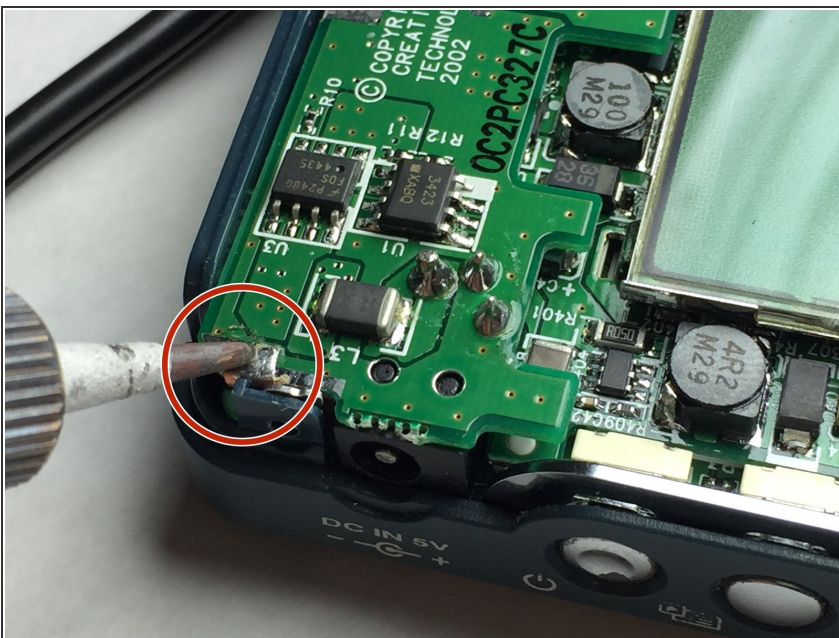
- Use the plastic opening tool to open the top cover by carefully prying at each corner.

Step 3 — Screen Cover



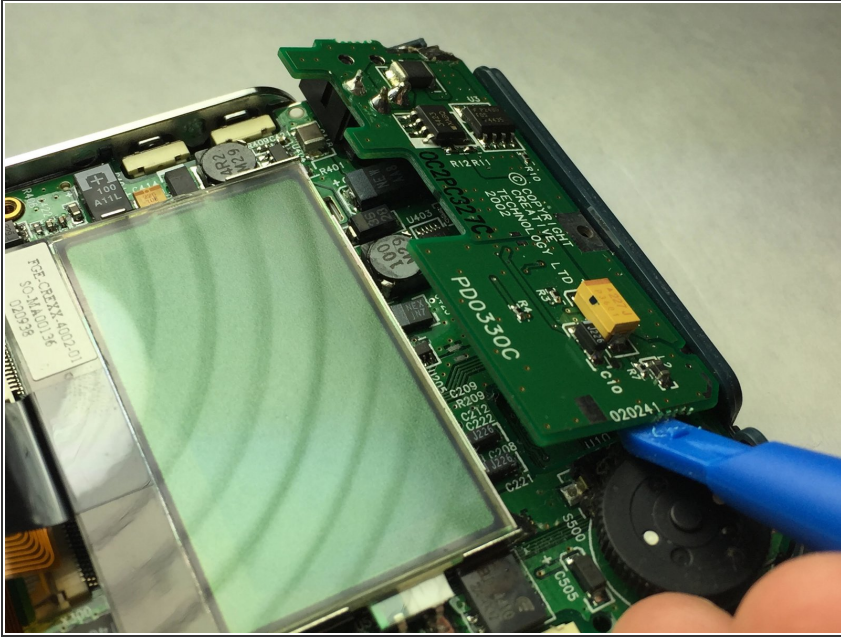
- Once the front face is removed, remove the three 6.8mm J0 screws from the metal cover and remove it.

Step 4 — Auxiliary Port



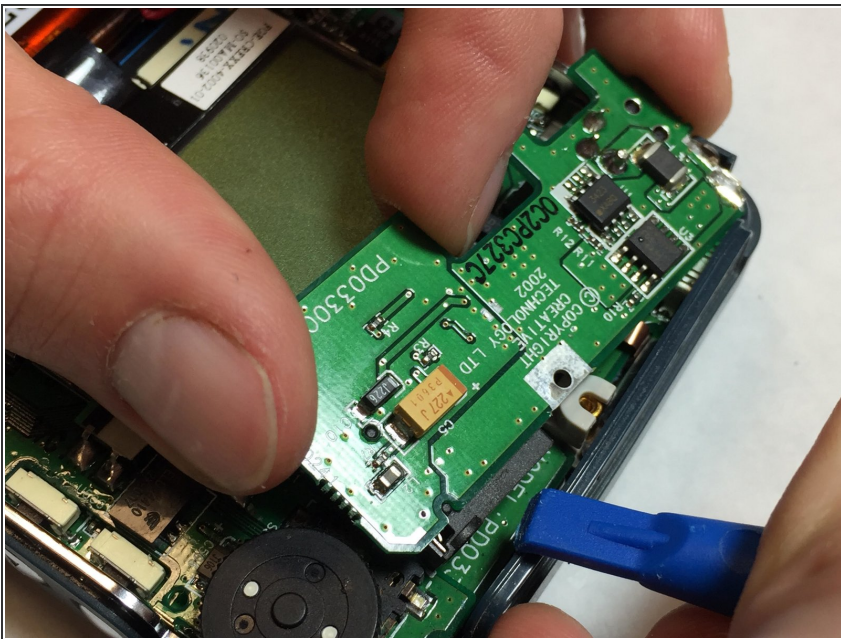
- Using a soldering iron, melt the solder in order to free the auxiliary jack.
- ⚠ [How To Solder and Desolder Connections](#) Use soldering gun with care as it becomes extremely hot and can cause burns

Step 5



- Using the plastic opening tool, gently pry up the other side of the auxiliary jack motherboard.

Step 6



- Using the plastic pulling tool, pull the plastic housing of the device out of the way in order to wiggle the the auxiliary jack motherboard free.

To reassemble your device, follow these instructions in reverse order.