



Celestron 71328 Nature DX 8x25 Control Arm Replacement

Replacing the control arm for the Celestron Nature DX 8x25.

Written By: Bryce Colangelo



INTRODUCTION

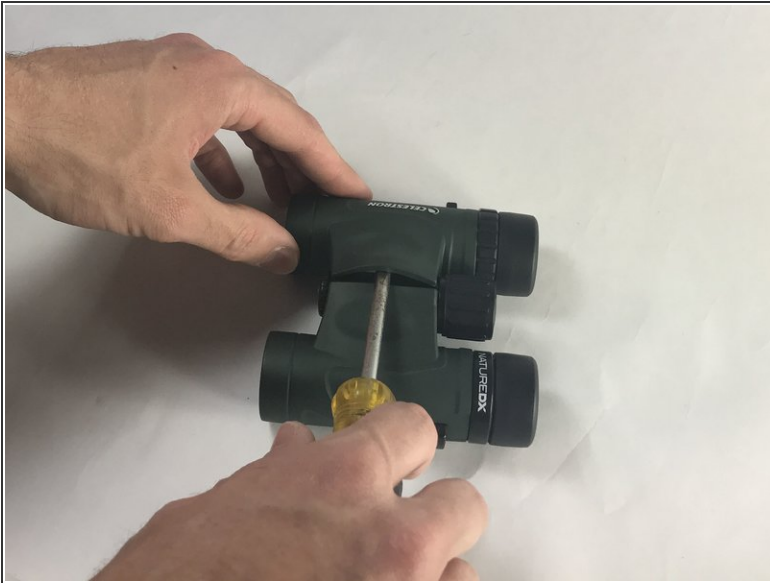
This is a guide for replacing the control arm for the Celestron Nature DX 8x25 Binoculars. These arm connect the focus knob's axis to the anchor arms.



TOOLS:

- [Flathead Screwdriver](#) (1)
 - [Metal Spudger](#) (1)
-

Step 1 — Skin Cover



- Using a plastic opening tool, nylon spudger or metal spudger, pry into seam of the skin cover at the center of the device. Lightly lift the tool which should cause the skin cover to rise.

Step 2



- Start peeling the skin away from the center. Apply force as there is an adhesive substance that is binding the skin to the device. Continue peeling until skin cover slides off completely.

Step 3



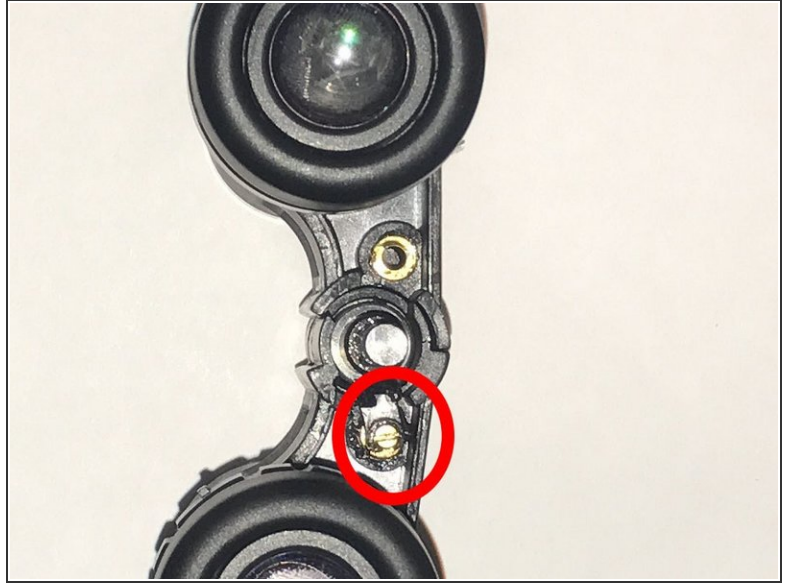
- Repeat steps 1 and 2 for the other side.

Step 4 — Control Arm



- Locate the panels in front of the binoculars between the middle axle and the viewing lens and simply pry them off with your fingers

Step 5



- Using a flathead screwdriver, unscrew the highlighted screwhead for the control arm.
- With your fingers, grab the screw head and pull it out completely once it's unscrewed and replace it with the new control arm if needed.
- ⓘ Parts revealed will be heavily lubricated. Consider wearing gloves.

To reassemble your device, follow these instructions in reverse order.