



Bowers and Wilkins T7 Access Panel Replacement

Replace or remove the access panel.

Written By: Shane R. Cowper



INTRODUCTION

Use this guide to learn how to take off or replace your access panel for the Bowers and Wilkins T7 speaker, enabling you to replace every other part.



TOOLS:

- [iFixit Opening Tools](#) (1)
 - [Tweezers](#) (1)
 - [JIS Driver Set](#) (1)
-

Step 1 — Access Panel



⚠ As with all electronic devices, make sure your device is powered off before you begin.

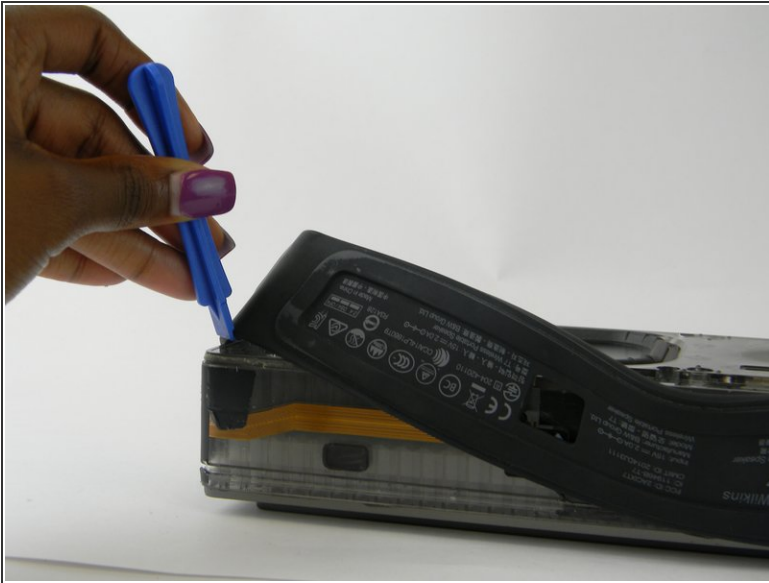
- Gently lift up the access panel; it should easily "pop" open.

Step 2



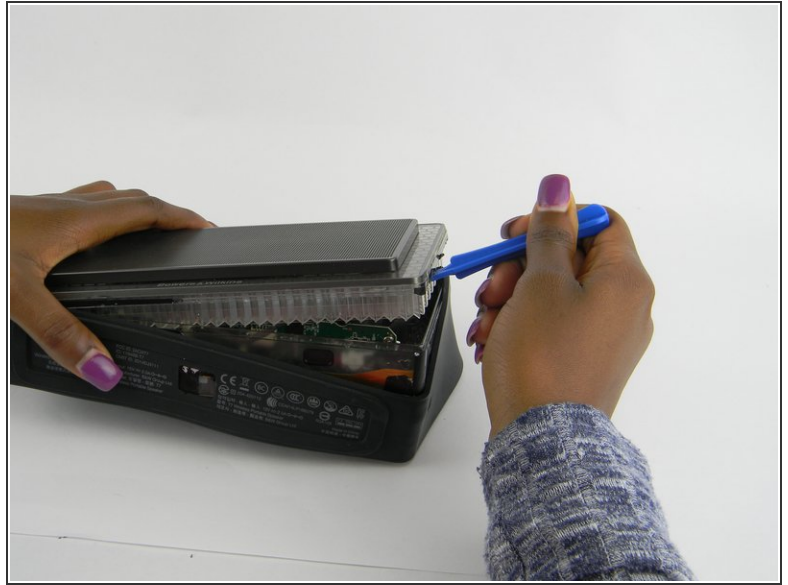
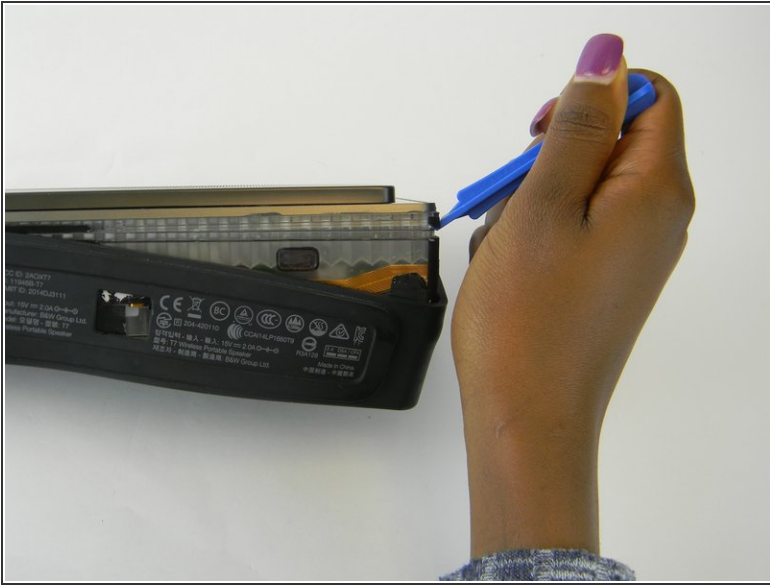
- Remove 14mm screws on the front panel with a J1 Phillips head screwdriver.
- There are 8 screws in total.


Step 3



- ⚠ Be gentle, the rubber seal is fragile and easy to tear, resulting in cosmetic damage to your device.
- Using the iFixit Opening Tool, carefully pry off the rubber seal around the sides.
- ⓘ The seal is held by adhesive, if this is proving difficult you can use a heat gun to help the process.

Step 4



-  The cover is the most difficult part to remove. As you work, pry continuously, moving the tool around the device, working it a little further as you go.
- Using the iFixit Opening Tool, pry open at the seam found under the rubber seal.
 - As the cover starts to come off, you can lift up using your hand.

Step 5



- Gently squeeze the internal locking mechanism inside the red and white terminals with either your fingers or a pair of precision tweezers.
- While squeezing the internal locking mechanism, pull back the terminal.
- Repeat this process for the second speaker.

To reassemble your device, follow these instructions in reverse order.