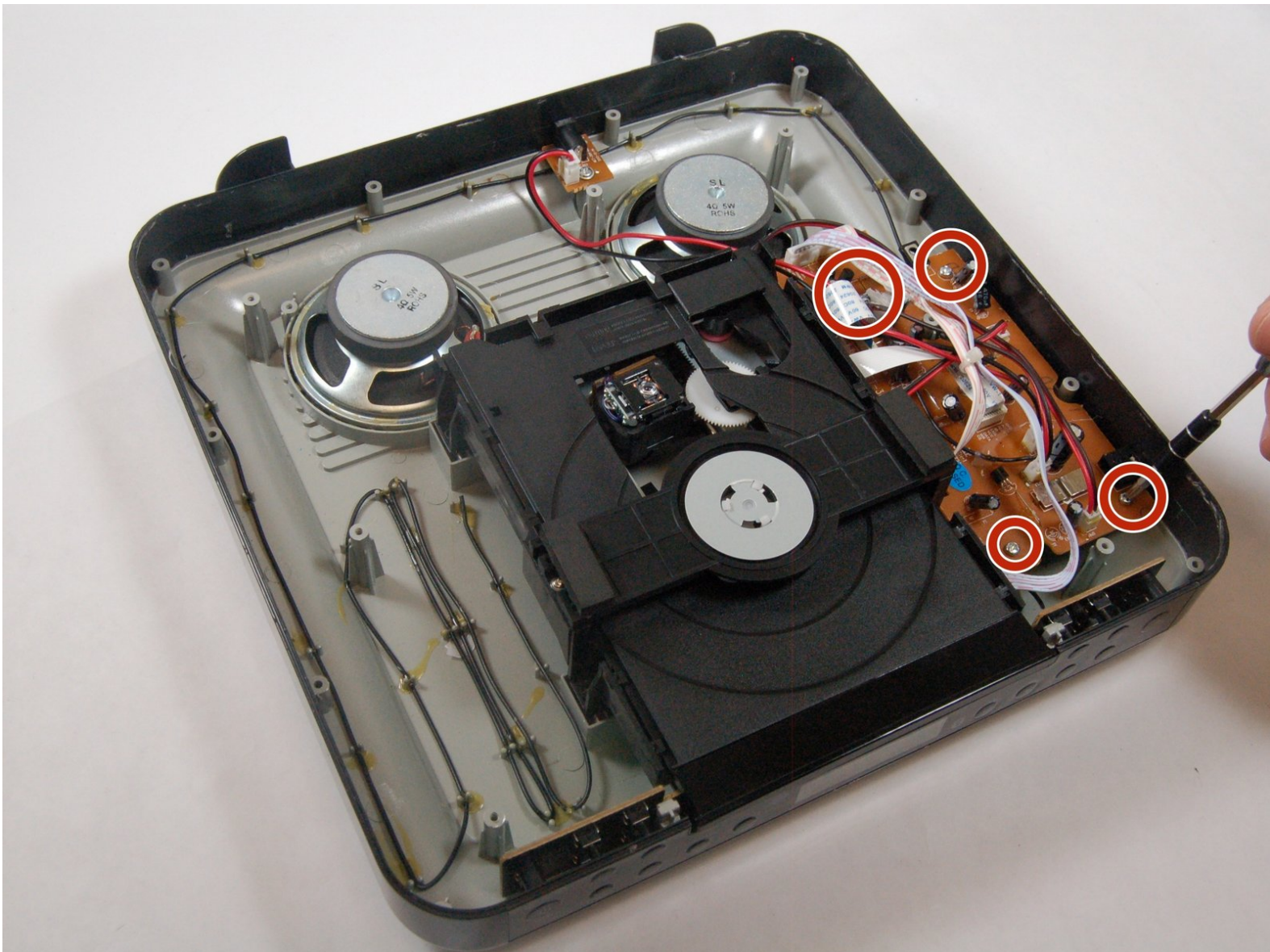




iLive IKBC384S Motherboard Replacement

Motherboard replacement for the iLive IKBC384S.

Written By: Tracy Walts



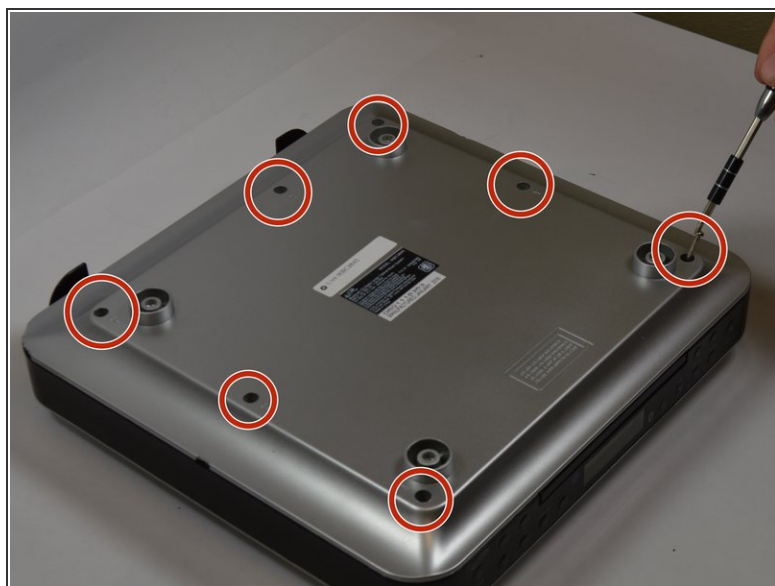
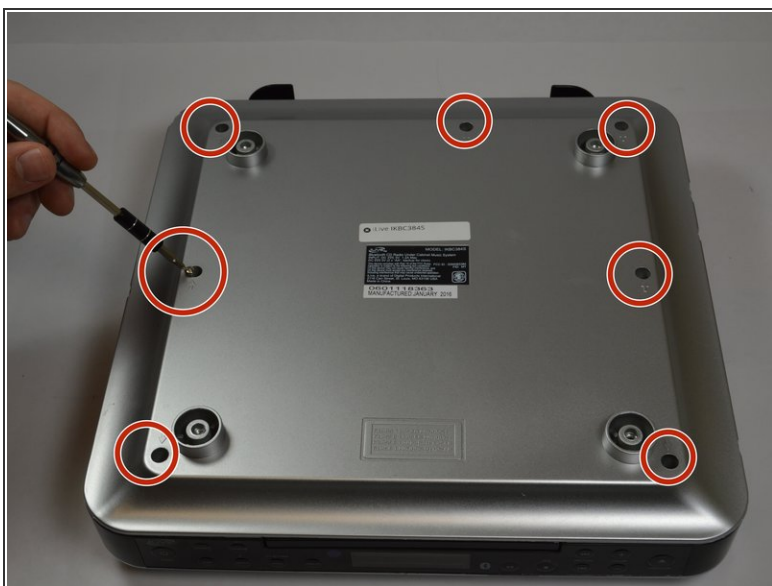
INTRODUCTION

You are going to replace the motherboard simply by unscrewing a few screws and then removing the motherboard from the device.

TOOLS:

- [iFixit Opening Tools](#) (1)
 - [Phillips #00 Screwdriver](#) (1)
 - [iOpener](#) (1)
-

Step 1 — Top Cover



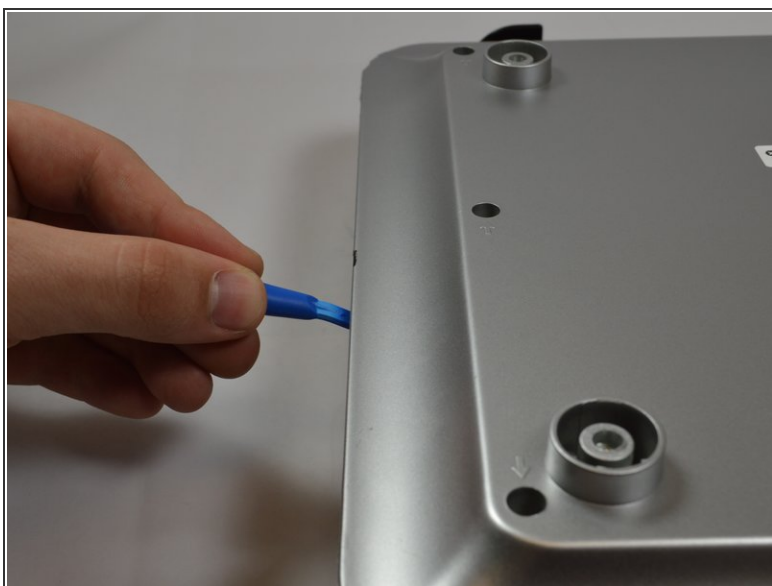
- Make sure you remove all seven 3 mm screws before proceeding to the next step.

Step 2



- Use iOpener or heat gun on all sides except the front.

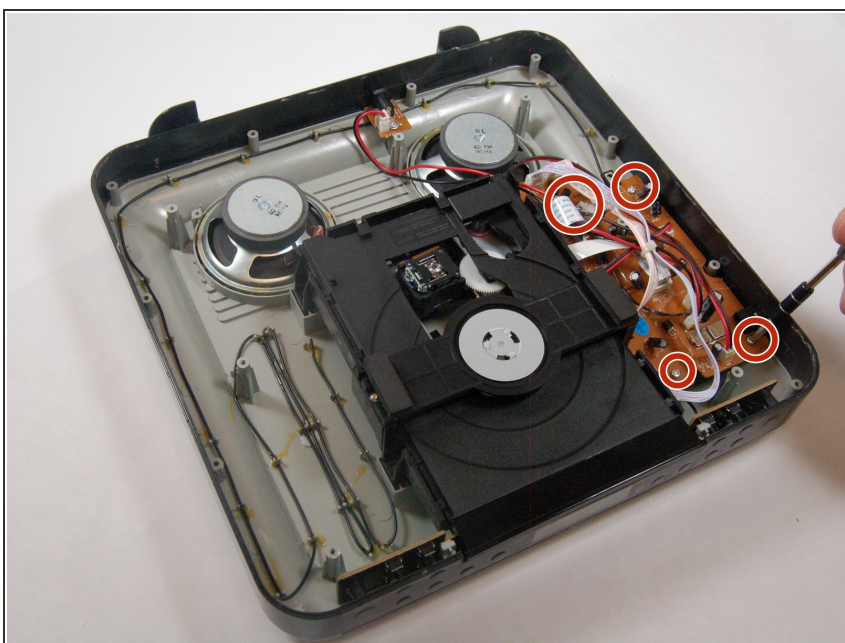
Step 3



- Be cautious when taking the top of the device off there may still be some adhesive stuck to device.

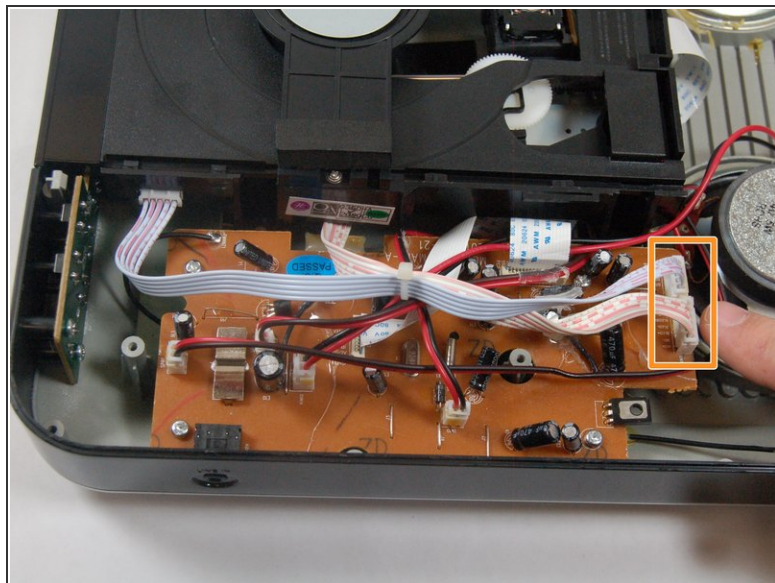
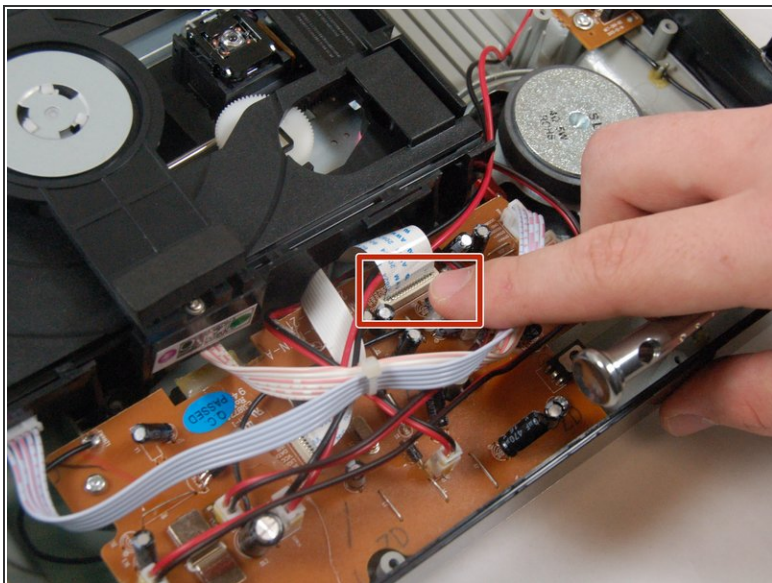
⚠ The top of the device will be very difficult to remove because of the adhesive holding it together.

Step 4 — Motherboard



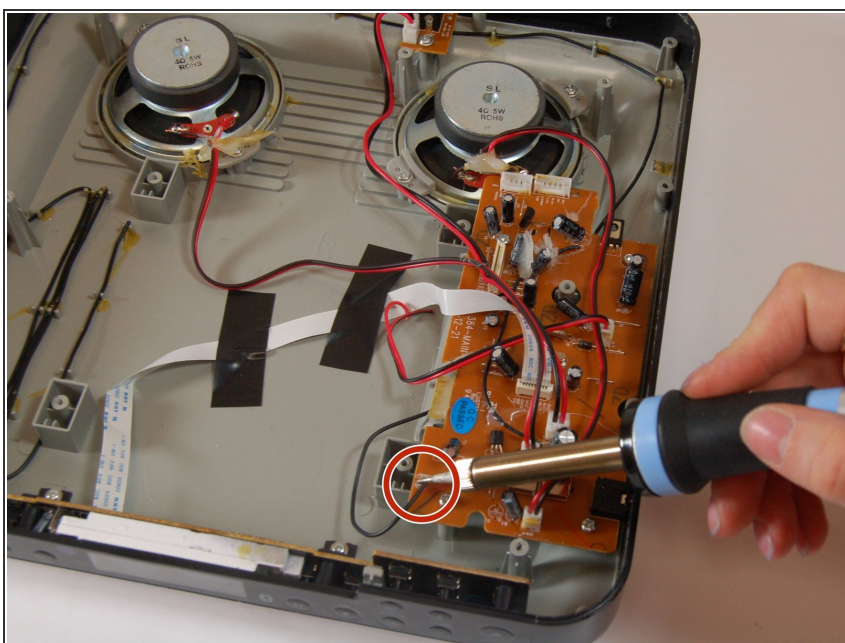
- After removing the top of the device, locate the screws on the motherboard. Gently unscrew all four of the 3.5mm screws on the motherboard.

Step 5



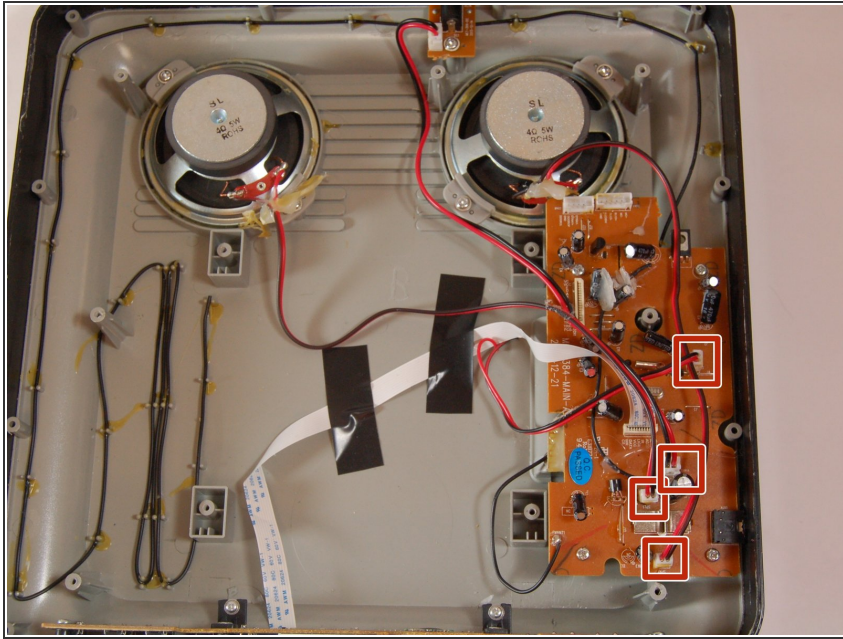
- Unplug the ribbon cable connected to the motherboard that stems from the disc drive.
- Disconnect the two power connectors from the motherboard.

Step 6



- You will need to desolder the antenna.
- Be sure to desolder the piece connected to the motherboard **not** the wire.

Step 7



- You will need to remove the speakers and power connector.
- ⓘ Once you have removed all of these from the motherboard, the motherboard can be removed

To reassemble your device, follow these instructions in reverse order.